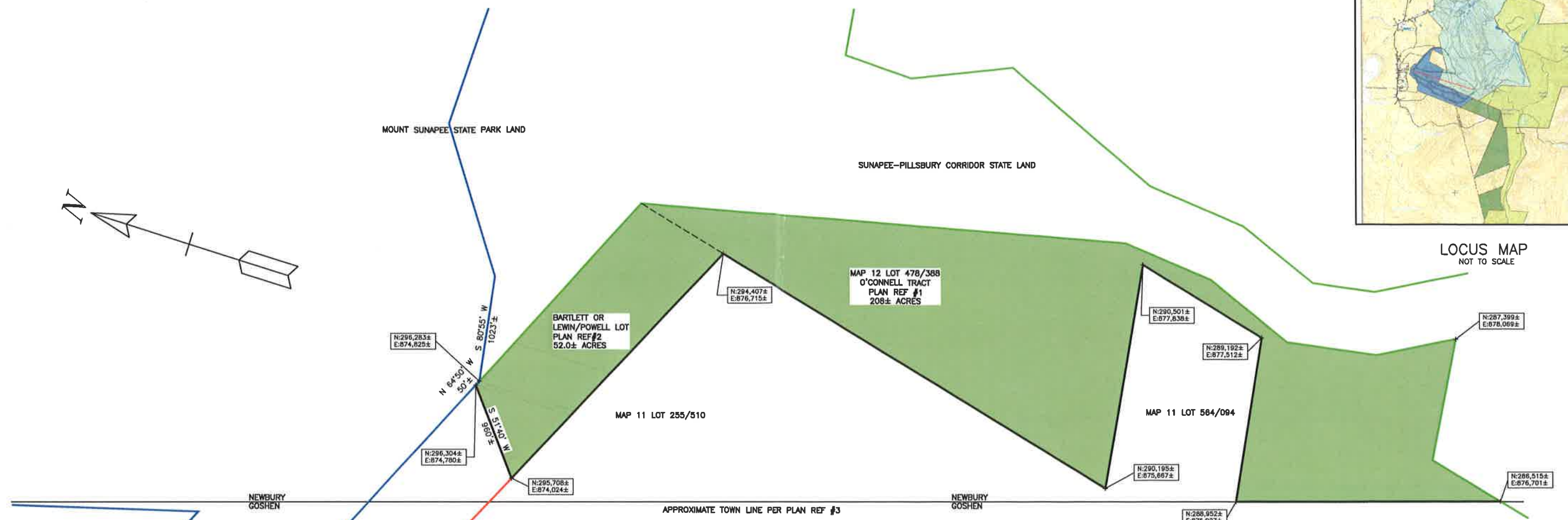



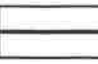



LOCUS MAP
NOT TO SCALE



GENERAL NOTES:

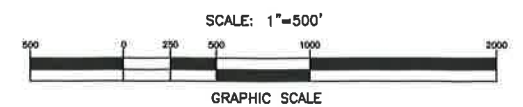
1. THE OWNER OF RECORD IS:
SUNAPEE LAND HOLDINGS, LLC
PO BOX 2021
NEWBURY, NH 03255
2. THE INTENT OF THIS PLAN IS TO SHOW THE CONCEPTUAL CONSERVATION LANDS WITH THE APPROXIMATE BOUNDARY LINES WHICH HAVE BEEN AGREED UPON BY THE SUNAPEE DIFFERENCE, LLC AND THE NEW HAMPSHIRE DEPARTMENT OF RESOURCES AND ECONOMIC DEVELOPMENT (DRED).

WHEN THE WEST BOWL EXPANSION LANDS PROJECT IS PERMITTED, BUT BEFORE CONSTRUCTION BEGINS, LAND SURVEYS WILL BE DONE TO DEFINE THE AS-BUILT PLAN WHICH WILL BECOME THE BASIS FOR THE DEED AND LAND TRANSFERS TO DRED.
3. THIS PLAN IS THE COMPILATION OF REFERENCED PLANS. MINIMAL DEED RESEARCH AND NO FIELD WORK HAS BEEN PERFORMED IN CONJUNCTION WITH THE PREPARATION OF THIS PLAN.
4. STATE PLANE COORDINATES SHOWN ARE BASED ON REFERENCE PLANS AND SHOULD BE CONSIDERED APPROXIMATE WITH AN ACCURACY OF ± 100 FEET.

-  SUNAPEE LAND HOLDINGS, LLC LAND TO BE TRANSFERRED TO THE STATE OF NEW HAMPSHIRE AS CONSERVATION LAND (NOT TO BE ADDED TO THE MOUNT SUNAPEE SKI AREA LEASEHOLD) APPROXIMATELY 260 ACRES
-  APPROXIMATE NEW BOUNDARY LINE OF CONSERVATION LANDS AFTER LAND TRANSFERS TO STATE OF NEW HAMPSHIRE
-  MOUNT SUNAPEE STATE PARK BOUNDARY LINE, LANDS OUTSIDE OF SKI AREA LEASEHOLD BOUNDARY
-  CURRENT BOUNDARY OF SKI AREA LEASEHOLD
-  APPROXIMATE BOUNDARY LINE OF WEST BOWL EXPANSION LANDS AND NEW SKI AREA LEASEHOLD AFTER LAND TRANSFERS

PLAN REFERENCES:

1. PLAN TITLED "BOUNDARY MAP SHOWING CONSERVATION EASEMENT AREA ON THE SUNAPEE MOUNTAIN LOTS OWNED BY O'CONNELL MANAGEMENT COMPANY LOCATED IN NEWBURY-MERRIMACK COUNTY, GOSHEN-SULLIVAN COUNTY", DATED 11/30/1989, PREPARED BY FORECO: FOREST RESOURCES CONSULTANTS AND RECORDED IN THE MERRIMACK COUNTY REGISTRY OF DEEDS AS PLAN #11680.
2. PLAN TITLED "BARTLETT LOT, GOSHEN & NEWBURY, NH", DATED 4/26/1954, PREPARED BY WALTER F BRECKENRIDGE AND RECORDED IN THE SULLIVAN COUNTY REGISTRY OF DEEDS AS PF4, #1210.




DATE	DESCRIPTION	BY	REV.

CONSERVATION LANDS

THE SUNAPEE DIFFERENCE, LLC
LEASE AMENDMENT - EXHIBIT B
 SITE LOCATION
MT SUNAPEE SUMMIT
NEWBURY, NH

SCALE: 1" = 500'		DATE: DEC. 5, 2015	SHEET 1	REV.
DESIGN	DRAWN	CHECKED	FB	PG
	L.B.B.	R.T.C.		15-0255



3 ALPINE COURT, SUITE 2
 SUNAPEE, NH 03782
 (603)873-4000 • FAX (603)873-4040
 email: cld@cldegners.com
 MAINE • NEW HAMPSHIRE • VERMONT

CLD Consulting Engineers, Inc.