

## Environmental Management Plan

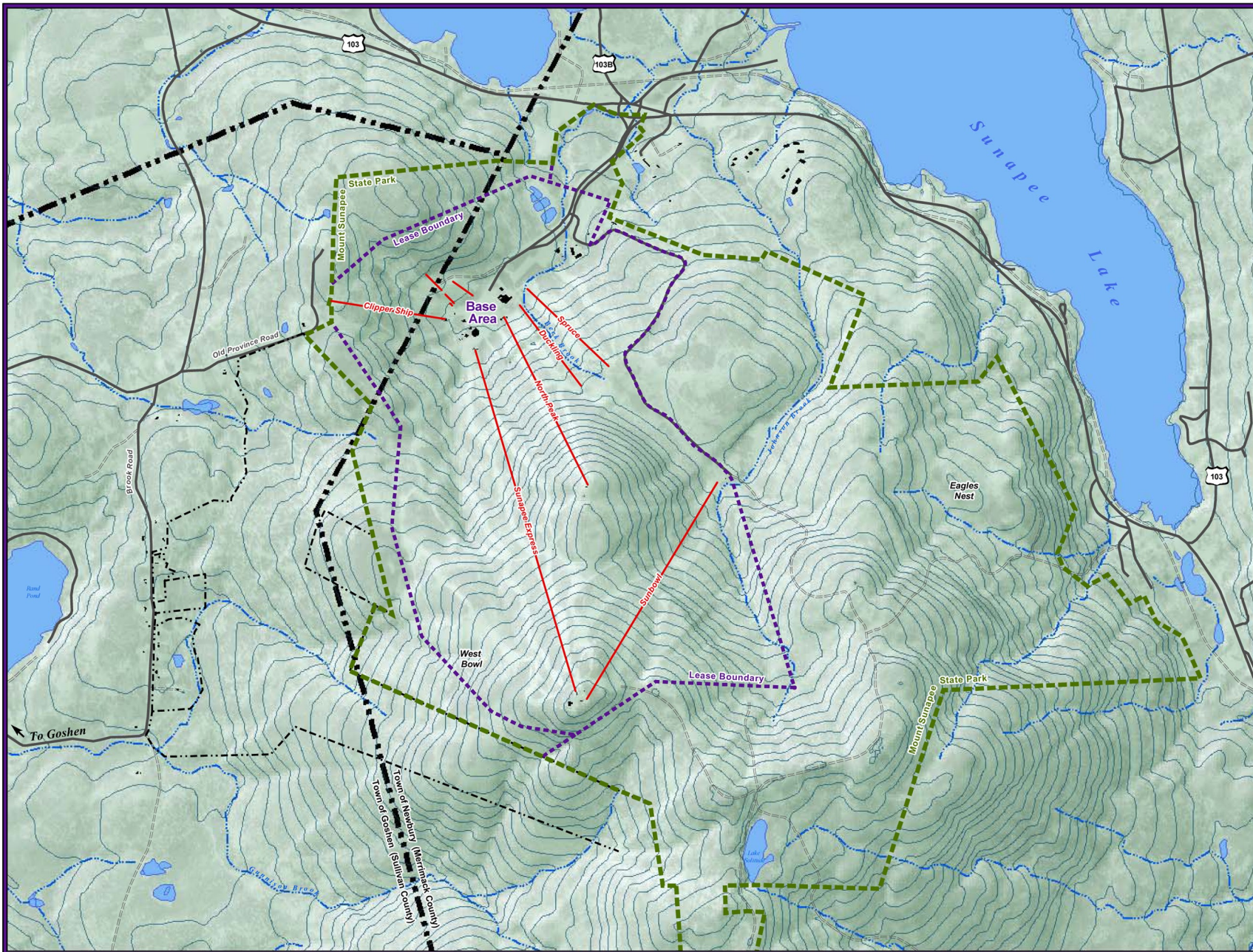
-  Existing Lift
-  Existing Trail
-  Existing Ski Area Lease Boundary
-  State Park Boundary
-  Property Line
-  Town Boundary
-  Road
-  Water Body
-  Stream



Scale: 1 In = 1,500 Ft  
 Contour Interval: 50 Ft  
 Date: June 1, 2009  
 Drawn By: ZP  
 Checked By: MDK  
 Prepared By:



Title  
 Base Map  
 Sheet Number  
**EMP - 1**  
 Project Number: 09033-001  
 File: Sunapee\_Existing.mxd



## Environmental Management Plan

- Existing Lift
- Proposed Lift
- Existing Trail
- Proposed Trail
- Existing Ski Area Lease Boundary
- State Park Boundary
- Property Line
- Town Boundary
- Road
- Known Wetland
- Water Body
- Stream

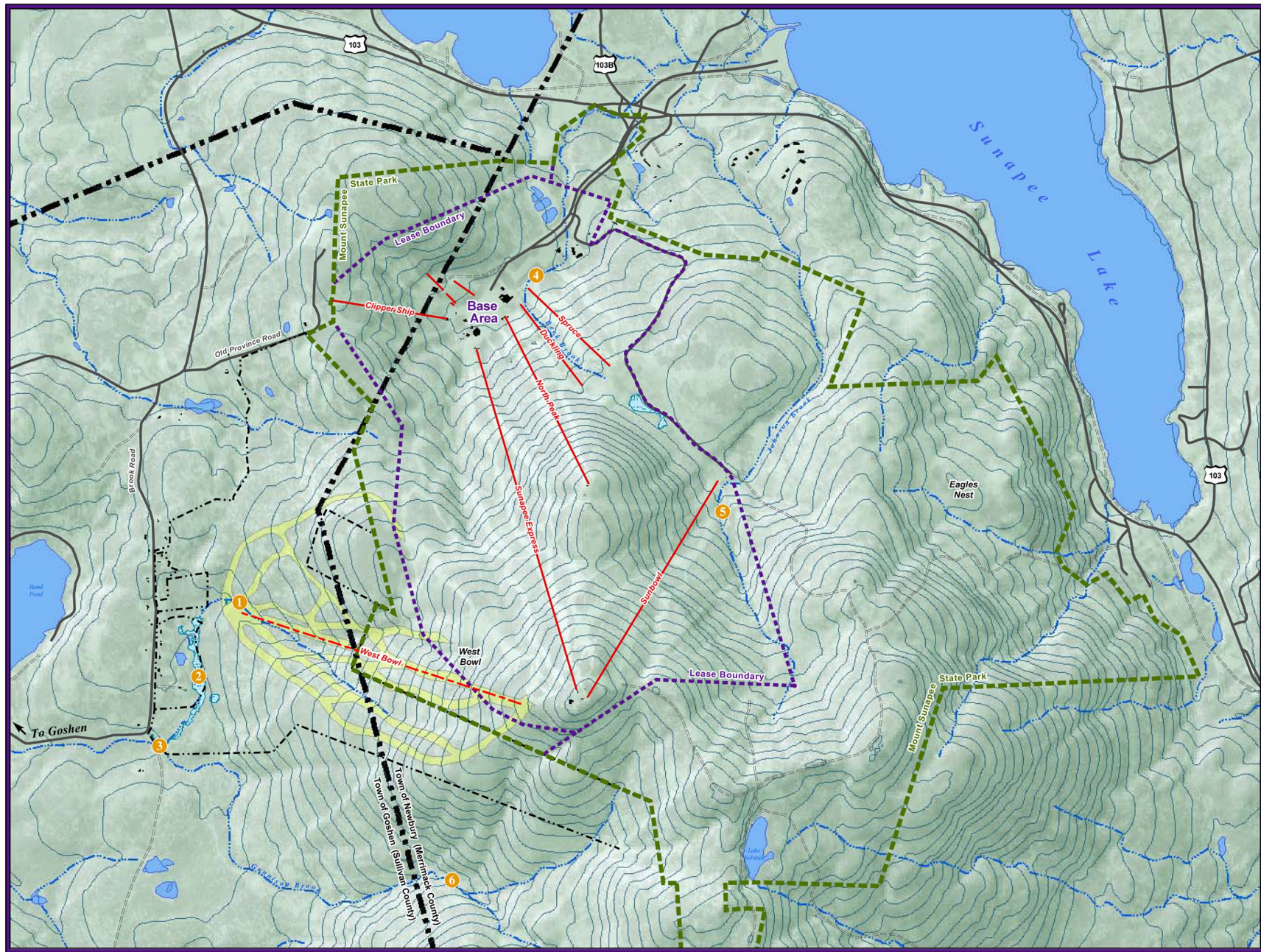
- Notes**
- 1 Unnamed drainage within West Bowl area
  - 2 Known wetland area
  - 3 Confluence of unnamed drainage and Gunnison Brook
  - 4 Beck Brook Drainage
  - 5 Johnson Brook Drainage
  - 6 Gunnison Brook Drainage








Scale: 1 In = 1,500 Ft  
 Contour Interval: 50 Ft  
 Date: June 1, 2009  
 Drawn By: ZP  
 Checked By: MDK  
 Prepared By:

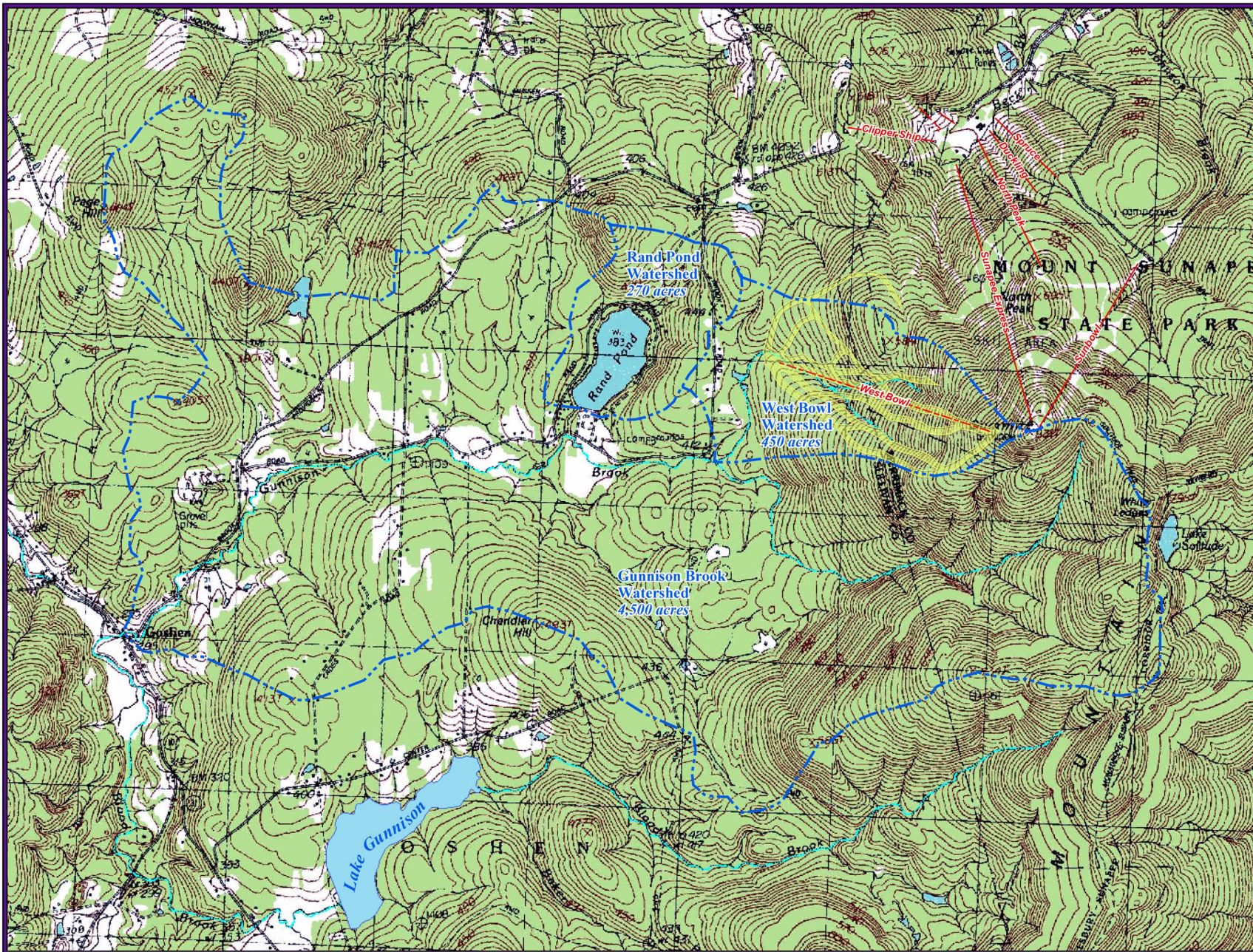


Title  
 Resource Map  
 Sheet Number  
**EMP - 2**  
 Project Number: 09033-001  
 File: Sunapee\_Condition3.mxd



## Environmental Management Plan

-  Existing Lift
-  Proposed Lift
-  Proposed Trail
-  Stream
-  Watershed Boundary



Scale: 1 In = 1,500 Ft  
 Contour Interval: 50 Ft  
 Date: June 1, 2009  
 Drawn By: ZP  
 Checked By: MDK  
 Prepared By:

**Bruno & Associates, 2004**

Title  
 Watershed Map  
 Sheet Number  
**EMP - 3**  
 Project Number: 09033-001  
 File: Sunapee\_Watershed.mxd

## Environmental Management Plan

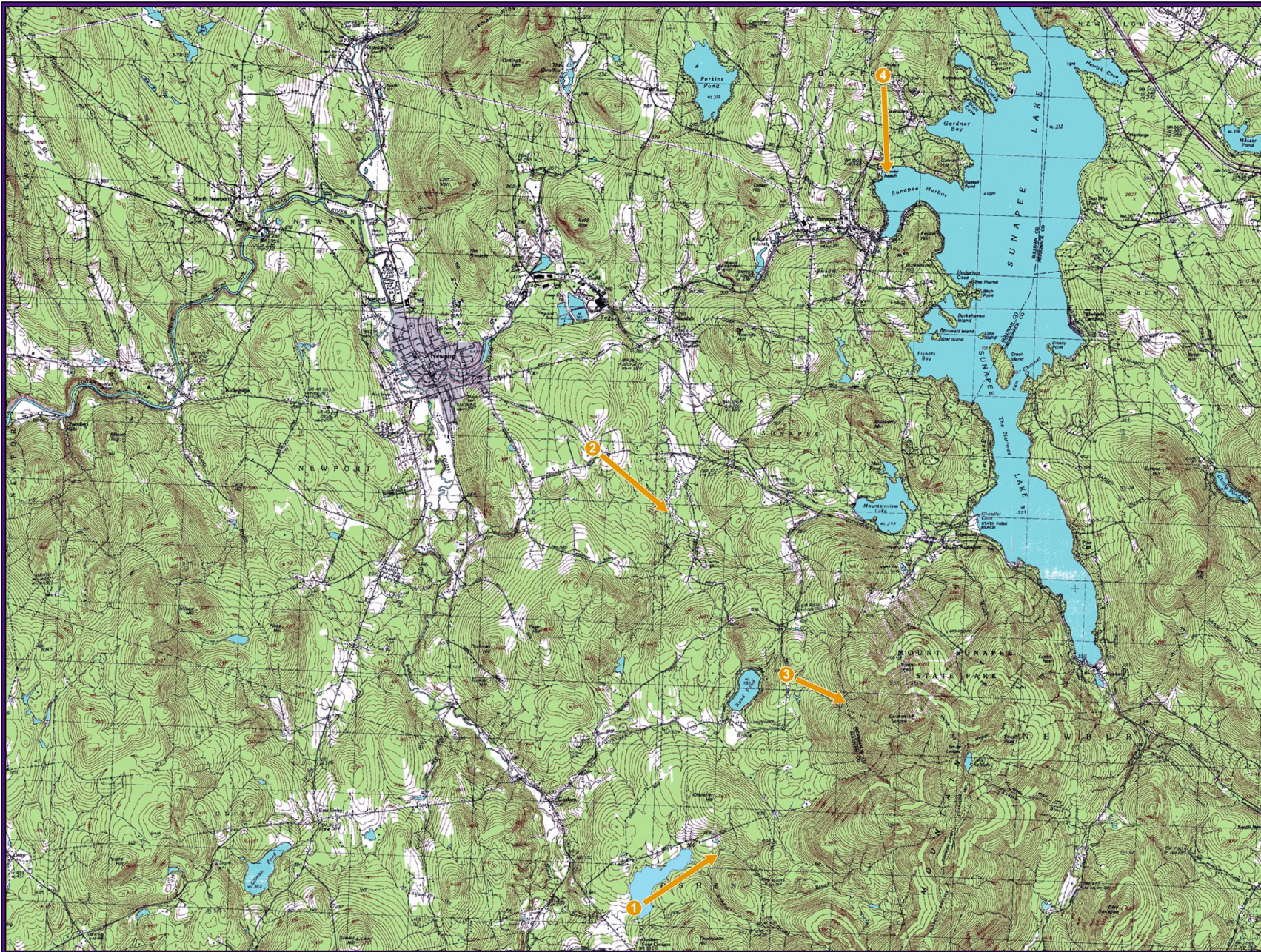
- 1 View Point #1**  
3.5 miles southwest  
of Mount Sunapee
- 2 View Point #2**  
4.3 miles northwest  
of Mount Sunapee
- 3 View Point #3**  
1.4 miles west  
of Mount Sunapee
- 4 View Point #4**  
6.7 miles north  
of Mount Sunapee



Date: June 1, 2009  
Drawn By: ZP  
Checked By: MDK  
Prepared By:



Title  
Viewshed  
Sheet Number  
**EMP - 4**  
Project Number: 09033-001  
File:





VIEWPOINT #1: View looking north and east from Lake Gunnison towards Mount Sunapee (left) and the West Bowl Area (left-center).



VIEWPOINT #2: View looking south and slightly east from Bradford Road near Newbury towards Mount Sunapee and the West Bowl (slightly right of center).



VIEWPOINT #3: View looking east from Brook Road towards the West Bowl area. Note that the lower elevations are largely screened by foreground vegetation.



VIEWPOINT #4: Long-range view looking south and east from Brown Hill area towards Mount Sunapee (right) and the East Bowl / Eagles Nest area (Center and left).

Date: June 1, 2009  
Drawn By: ZP  
Checked By: MDK  
Prepared By:



Title  
Photographs  
Sheet Number  
**EMP - 5**  
Project Number: 09033-001  
File: