

STATE OF NEW HAMPSHIRE
DEPARTMENT of NATURAL and CULTURAL RESOURCES
DIVISION of PARKS and RECREATION
172 Pembroke Road Concord, New Hampshire 03301
Phone: (603) 271-3556 Fax: (603) 271-3553
Web: www.nhstateparks.org

Addendum

Addendum #: 002

Project Name: Pawtuckaway Toilet Building #4 Renovations
Project Number: CAP 2014
Project Address: Nottingham, New Hampshire

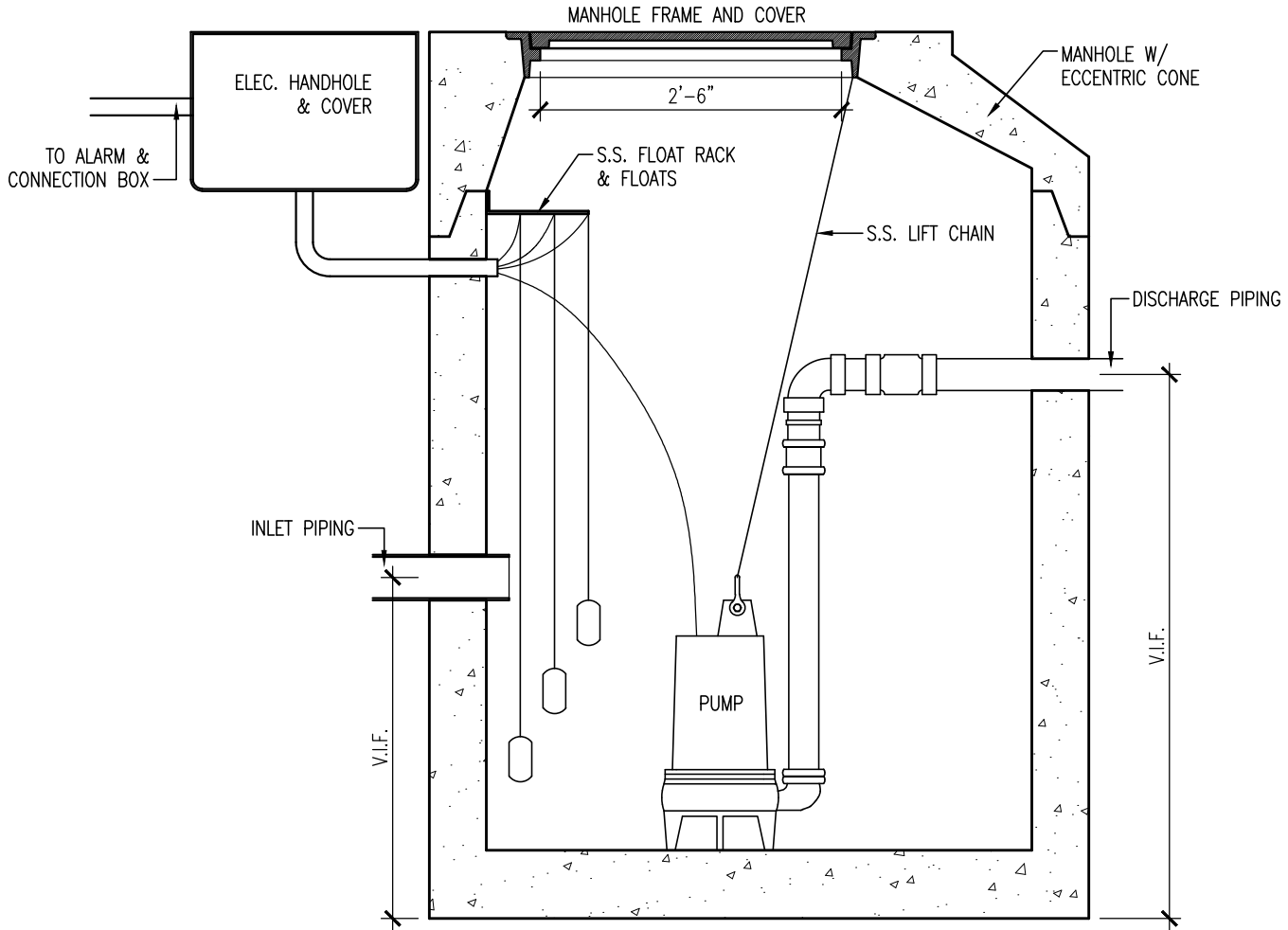
Date: July 6, 2021

This Addendum forms a part of the Contract Documents and modifies the original Bidding and Permit Documents as noted below. Incorporate the following revisions to the Specifications, Drawings and Contract Documents of the above named project. General items are not referenced. Revisions to the Specification are referenced by section, page, number and paragraph. Revisions to the Drawings are referenced by drawing sheet number.

Drawings

C1.01, Key Note #2

CHANGE Note #2 to read "Provide pump chamber and pump per CSK-1 Pump Station Detail."



NOTES:

1. PUMP CHAMBER: SHEA CONCRETE MH4-54S41D WITH ECCENTRIC CONE MH4-18C4ID. PROVIDE CAST IRON MANHOLE FRAME AND COVER WITH DIAMOND TOP NON-SKID SURFACE AND MARKED "SEWER" IN 3" HIGH LETTERING.
2. PUMP: GOULDS MODEL 1GD, 2 HP SUBMERSIBLE GRINDER PUMP. PUMPS & FLOATS TO BE PROVIDED WITH EXTRA LONG CHORDS. ESTIMATED PUMP OPERATION OF 35 GPM AT A TOTAL SYSTEM HEAD OF 20.5 FEET.
3. PUMP PIPING TO BE SCHEDULE 80 PVC. PROVIDE UNION FOR EASY REMOVAL.
4. ALL WIRING TO BE UNDERGROUND QUALITY AND SIZED FOR DISTANCE OF TRAVEL BY AN ELECTRICIAN FOR THE PUMP SPECIFIED. PUMP ON/OFF CONTROL SWITCHES TO BE ADJUSTABLE MERCURY FLOATS (DOUBLE FLOATS ONLY) AS MANUFACTURED BY SJ ELECTRIC. CONTROL PANEL WITH WARNING LIGHT SHALL BE SJ ELECTRIC TANK ALERT, NEMA 1 OR EQUIVALENT. COORDINATE LOCATION WITH ARCHITECT IN FIELD.
5. COORDINATE FLOAT MOUNTING HEIGHTS IN FIELD FOR PROPER OPERATION.

State of NH Department of Natural and Cultural Resources: 172 Pembroke Road, Concord, NH, 03301

PROJECT INFORMATION:

PAWTUCKAWAY STATE PARK
TOILET BUILDING #4 RENOVATIONS
 ADDENDA #002

SHEET INFORMATION:

PUMP STATION DETAIL

DRAWN BY: SDC

PROJECT #: CAP 2014

DATE: 7/6/2021

SCALE: 3/4" = 1'-0"

REVISED: -

CSK-1