

# Mount Sunapee Resort

Newbury, NH

## Summer Recreational Program Proposal



Presented to the New Hampshire

Department of Resources and Economic Development

November 3, 2011

# **Mount Sunapee – Proposed Summer Recreational Plan**

## **Table of Contents**

### **Introduction**

### **New Summer Activities and locations**

1. Canopy Tour / Zip Line
2. Treetop Adventure Park
3. Mountain Bike Trails
4. Disc Golf
5. Interpretive Hiking Trails
6. Segway Tours
7. Miniature Golf

### **Existing Summer Activities and locations**

1. League of New Hampshire Craftsmen's Fair
2. Weddings, Receptions, Banquets & Meetings
3. Summit Dinners
4. Concerts
5. Summit Chairlift Rides

### **Location Map**

### **New Hampshire Competitors and Recent Competitive Developments**

1. Attitash
2. Bretton Woods
3. Cannon / Mittersill
4. Cranmore
5. Gunstock
6. Loon
7. Ragged
8. Waterville Valley
9. Wildcat

### **Phoenix Experiential Designs – company overview**



## **I. Introduction**

Mount Sunapee management has proposed expanding the summer recreational offerings at Mount Sunapee several times since Okemo's original *Proposal for the Operation of the Mount Sunapee Ski Area* which was submitted to the New Hampshire Department of Resources and Economic Development on April 1, 1998. (note: see Tab 4, Section N, p 70-71)

The following summer recreational activities were proposed and described with some detail in the original 1998 Okemo *Proposal*:

- Mountain Biking
- Scenic Chairlift Rides
- Hiking
- In-line Skating & Skateboard Park
- Alpine Slide
- Concerts
- Water park

Other summer recreational activities were simply listed as potential activities and included the following:

- Craft Fairs
- Athletic Events
- Weddings & Family Gatherings
- Special Ethnic Festivals
- Children's Day Camps
- Nature and Wildlife Interpretation and Education
- Archery Competition
- Food and Brewery Festivals

Since Okemo's *Proposal for the Operation of the Mount Sunapee Ski Area* in 1998, four important documents have followed including:

- April 20, 1998 Lease and Operating Agreement
- January 25, 2000 5-year Master Development Plan
- June 1, 2005 5-year Master Development Plan
- June 1, 2009 5-year Master Development Plan

In Mount Sunapee's most recent Master Development Plan which was submitted to the NH- Department of Resources and Economic Development on June 1, 2009, Mount Sunapee added a Zip Line to the summer recreational items that were proposed in the original *Proposal for the Operation of the Mount Sunapee Ski Area* and in the other two Master Development Plans.

## **II. Proposed New Summer Activities**

Mount Sunapee management has spent considerable time investigating the various attractions and options available for a summer recreational program.

Our goal has been to find the right mix of summer recreational attractions that are the best fit for our family-focused brand identity, and the best fit for the essential character of Mount Sunapee.

We found many options including attractions that have an "amusement park" feel, attractions that have a "pure adrenaline rush" feel, and attractions that have a "natural setting" feel.

Mount Sunapee managers have visited many ski areas and/or zip line operators as paid participants in New Hampshire, Vermont, New York and Massachusetts to experience the "feel" of the resort and experience first-hand the attractions offered by the operators.

Based on our experience in visiting these areas and using their various attractions, Mount Sunapee has chosen to base our summer recreational program around a "natural setting" feel which best matches our family recreational brand and the unique natural setting at Mount Sunapee.

***The following sections describe the summer recreational plans that are proposed for installation and operation in the summer and fall of 2012 at Mount Sunapee.***

## 1. Canopy Tour / Zip Line

Mount Sunapee proposes to add a Canopy Tour / Zip Line as its signature summer attraction.



The Canopy Tour / Zip Line would be located in the woods at the South Peak area.

Participants would access the start of the Canopy Tour / Zip Line by riding uphill on the 1,814 long Clipper Ship Quad chair lift which serves the South Peak trails. The vertical drop is 374 ft.

Phoenix Experiential Designs from Boone, NC is the designer of the Canopy Tour / Zip at Mount Sunapee. We plan to contract their crews for a turn-key installation beginning on May 1, 2012.

The three principals in the company have over 54 years of experience designing rope courses and challenge courses in the United States.

They have designed many rope courses at ski areas including Crested Butte, CO; Okemo, VT; Seven Springs, PA; and, Massanutten, VA.

The proposed Canopy Tour / Zip Line at Mount Sunapee would begin in the woods near the top of the Clipper Ship Quad chair lift and end behind the Learning Center building at the end of parking lot one in the base area.

To traverse the 374' vertical drop the Canopy Tour is projected to have seven (7) or eight (8) zip line stages and two features which include one aerial, Indiana Jones style rope bridge and one feature where participants rappel down to a lower platform.

The topographical map on page 7 shows the preliminary lay-out of the seven stages and two features for the Canopy Tour.

The daily capacity for the Canopy Tour is 96 people. There would be two (2) tours per hour departing on the hour and on the half-hour which is 16 participants per hour.

Prior to riding the Clipper Ship Quad chairlift, all participants will have an indoor training and safety session, and all are fitted into their safety harnesses and helmets. After arriving at the top, the first zip line is a small training line that all participants use before beginning down the Canopy Tour / Zip Line course.



Canopy Tours will typically have 8 participants with 2 trained guides in each tour. One guide leads the group across each stage, and one guide follows the group across each stage.

The length of time to complete the Mount Sunapee Canopy Tour / Zip Line layout is estimated at two hours. There are minimum and maximum weight restrictions for participants of the zip line.

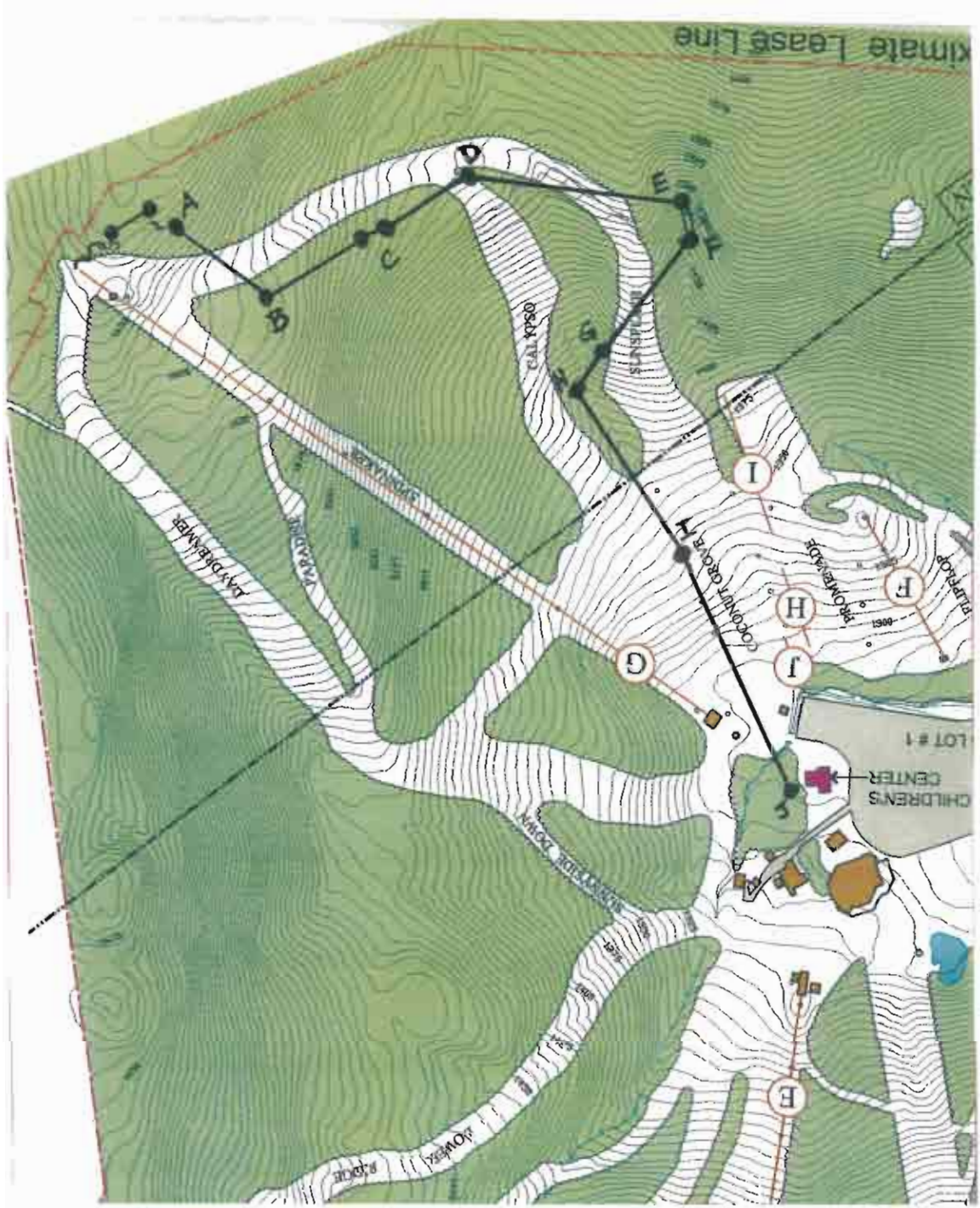
The capital costs for the design and installation of the Mount Sunapee Canopy Tour / Zip is estimated at \$325,000.

We are currently in the final design stages with a turn-key installation planned to begin on May 1, 2012. Our goal is to open to the general public by the weekend of June 30, 2012.

Operations would be either 5-days a week (Wed-Sun) or 7-days a week from June 30 through Labor Day weekend, and then would operate on weekends only during the fall and winter months.



**Topographical map of South Peak area at Mount Sunapee**



**Canopy Tour / Zip Line course lay-out at South Peak area**

## 2. Treetop Adventure Park

In addition to the Canopy Tour / Zip Line a popular recreational offering for younger age groups is the Treetop Adventure Park.

The Treetop Adventure Park would be located at South Peak in the woods to the left of the Clipper Ship Quad base terminal.

Treetop Adventure Parks can offer several different course layouts with varying skill levels for the elements in each course.

Mount Sunapee proposes that its first Treetop Adventure Course consist of a beginner course and an intermediate skill course built together in the same overall layout.

In the future, other layouts can be added in a modular way like a clover leaf which allows participants to move from lower level courses to progressively more difficult courses without leaving the overall Adventure Park setting.



Phoenix Experiential Designs have built many adventure parks that feature rope challenge elements, and they have been selected to design the Treetop Adventure Park at Mount Sunapee.



**Typical “elements” in a Treetop Adventure Course**



Treetop Adventure Parks are very popular with younger participants who may not be able to ride the Canopy Tour / Zip Line due to being below the minimum weight requirement of 80 pounds in order to use the Canopy Tour.

Additionally, the different skills levels and height levels allow the course designer to tailor the offering to different age and ability groups.

The participants on the ropes courses are required to wear safety harnesses and are always clipped into the overhead safety line.

Prior to using the Treetop Adventure Course all participants must go through the safety training course which teaches proper use and fitting of the safety harness and of the clip-in devices.

All participants and guides wear lightweight safety helmets in the Adventure Tree Park and in the Canopy Tour / Zip Line.

### 3. Mountain Bike Trails

The Clipper Ship Quad chair lift will be the transportation vehicle for participants using the Canopy Tour / Zip Line. The Clipper Ship Quad has an hourly uphill capacity of 800 people per hour at half-speed (225 feet per minute) in summer operations.

With the capacity of the Canopy Tour / Zip Line at only 20 people per hour including guides, Mount Sunapee is interested in other recreational offerings that utilize the Clipper Ship Quad for uphill transportation given the available uphill capacity.

One such recreational activity is lift-serviced mountain biking.

This activity also fits in the natural setting, family recreation brand that Mount Sunapee has cultivated.

Mountain biking can be offered in many ways and at different skill levels. Mount Sunapee plans a low level, family oriented mountain biking experience using novice or low intermediate trails from the summit of the South Peak area.



Mountain bikes would be available for rent at Mount Sunapee.

#### **4. Disc Golf**

Disc Golf offers another recreational activity that can use the Clipper Ship Quad chair lift to ride up the mountain, and play the disc golf course as they hike down the mountain.

The Disc Golf course would have a combination of "holes" that work their way down and across a ski trail, and others that weave in and out of the woods adjacent to the trails in the South Peak area.

Disc Golf Frisbees would be available for rent or purchase in the Retail Shop at Mount Sunapee.



Above is a typical Disc Golf "cup" that finishes the hole. Different Frisbees are often used for the different "shots" on the course.

## 5. Interpretive Hiking Trails

Interpretive Hiking Trails offer a recreational offering for guests in which they purchase a lift ticket to ride the Clipper Ship Quad chair lift to the South Peak summit area, and have a themed Interpretive Hiking Trail as their venue down the mountain.



The information signage would be developed around several flora and fauna categories including:

- Large Mammals
- Small Mammals
- Birds of Prey
- Song Birds
- Butterflies
- Trees
- Wildflowers
- Local history

At the head of the Interpretive Trail there may be large signage, 4' x 8' signs, which would show the trail layout and offer previews

of the locations for the many small signage locations which will show selected native species of the flora and fauna along the trail.

The Interpretive Hiking Trails would be free for guests who are willing to walk uphill to access the trails.

The Clipper Ship Quad chair lift will allow participants to enjoy riding the chair lift up the mountain for a small fee with the opportunity to enjoy the Interpretive Hiking Trail as their path down the mountain.



Along the trail would be smaller identification signage where the reflection benches are located that target species identification of the groups above.

The trails would be well marked for a defined path and may be lined with wood chips or blue stone.



## 6. Segway Tours

Segway Tours have become very popular for touring the historical sites in major cities such as Boston, MA and Manchester, NH.

They have also become very popular in natural settings as a personal touring vehicle in the base area. The ride is the thrill.

Mount Sunapee proposes having Segway Tours around the base area of the mountain along flatter elevation areas using the Segways with the larger, natural ground tires.



Riders enjoy riding through wooded areas in the base area and across parking lots such as Lot 2 or Lot 3 at Mount Sunapee.

A typical Segway Tour is 90 minutes with 6 riders and a guide.

All riders start with an indoor safety training session followed by a practice course training session before going on the Segway Tour. Helmets are provided for all participants.

## 7. Miniature Golf

Mount Sunapee has considered adding a natural setting miniature golf course for many years.

Miniature golf courses come in many designs and layouts.

Mount Sunapee proposes a ground level course that uses natural landscaping to create a scenic setting and fit into the “natural” feel of the summer recreational program at Mount Sunapee.



Miniature Golf offers summer recreational fun for all ages and is a very popular family activity that fits well with the Mount Sunapee family recreation brand.

The Miniature Golf course location poses the greatest site location challenge for Mount Sunapee. We do not have a location that is not also utilized for winter operations. We may have to make snow over the mini golf course in winter, and utilize landscaping that is recessed in pots in the ground and covered with mulch. The landscaping would be removed and stored for the winter.



### **III. Existing Summer Activities**

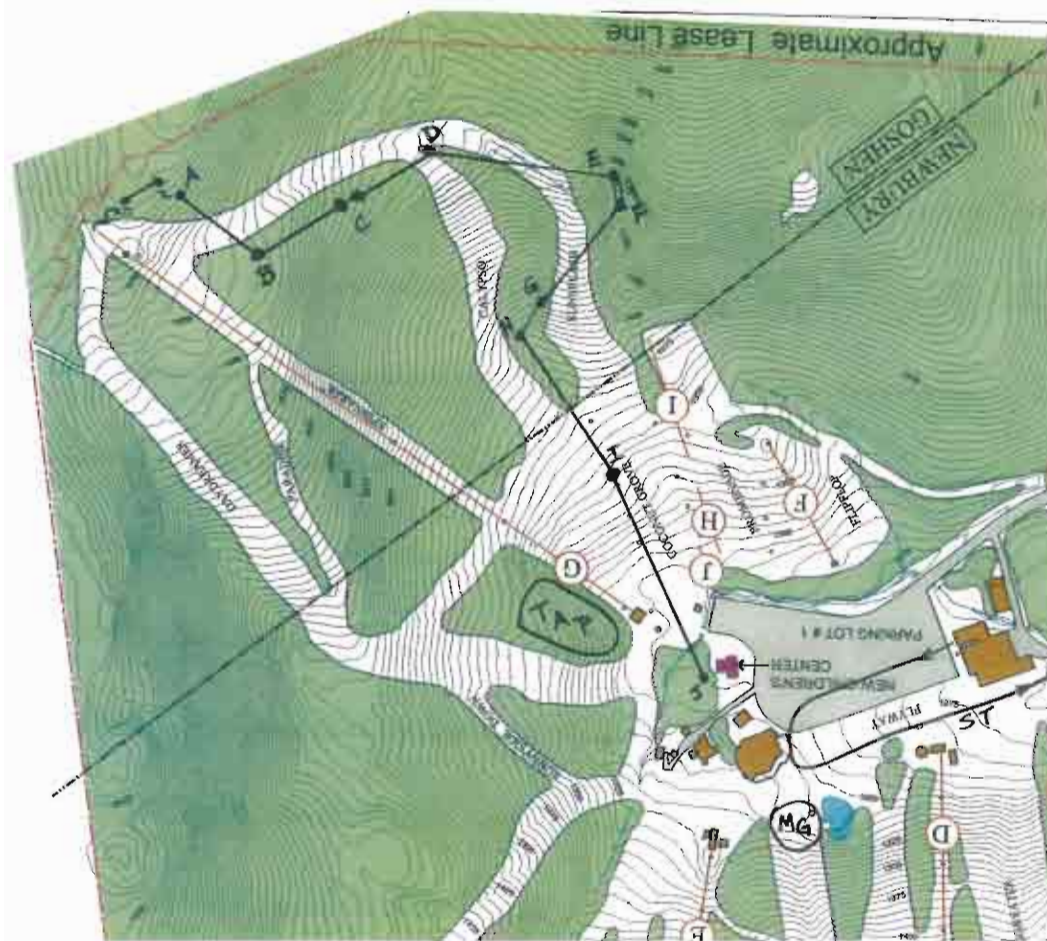
Mount Sunapee currently offers a limited summer recreational program. Some of the offerings include:

- Skyrides to the summit via the Sunapee Express Quad
- Summit Dinners (4) at the Summit Lodge via Sunapee Express
  - Lobster Fest
  - Family Fun Night
  - Wine Pairing
  - Beer Pairing
- Sunapee Lions Club Car Show in late June
- League of New Hampshire Craftsmen's Fair each August
- Fall Foliage Festival on Columbus Day weekend
- Weddings, Receptions, Banquets and Business Meetings

These activities will still be offered at Mount Sunapee, and the layout of the newly proposed recreational offerings will be designed to complement and not interfere with these existing activities.



#### IV. Location Map



**Approximate site location for Mount Sunapee summer recreational attractions.**

**A-J** = Canopy Tour / Zip Line stages

**TAP** = Treetop Adventure Park

**MG** = Miniature Golf

**ST** = Segway Tours

Mountain Bike Trails and the Interpretive Hiking Trails will start near the unload of Lift G (the Clipper Ship Quad) and meander through the woods and across the ski area before finishing in the base area.



## **V. NH Ski Area Competitors and Recent Competitive News**

In the past 5 years many New Hampshire ski areas have successfully introduced new or expanded winter and summer recreational opportunities and activities.

Mount Sunapee has lagged behind our competitors in recent years in introducing new summer and winter recreational activities.

Our guests are asking for more recreational offerings at Mount Sunapee as they have seen offered by our competitors.

This has been recognized by the Town of Newbury, and the Board of Selectmen are supportive of increasing the summer recreational offerings at Mount Sunapee.

The following section provides highlights of the new and expanded summer and winter recreational offerings by our NH competitors.

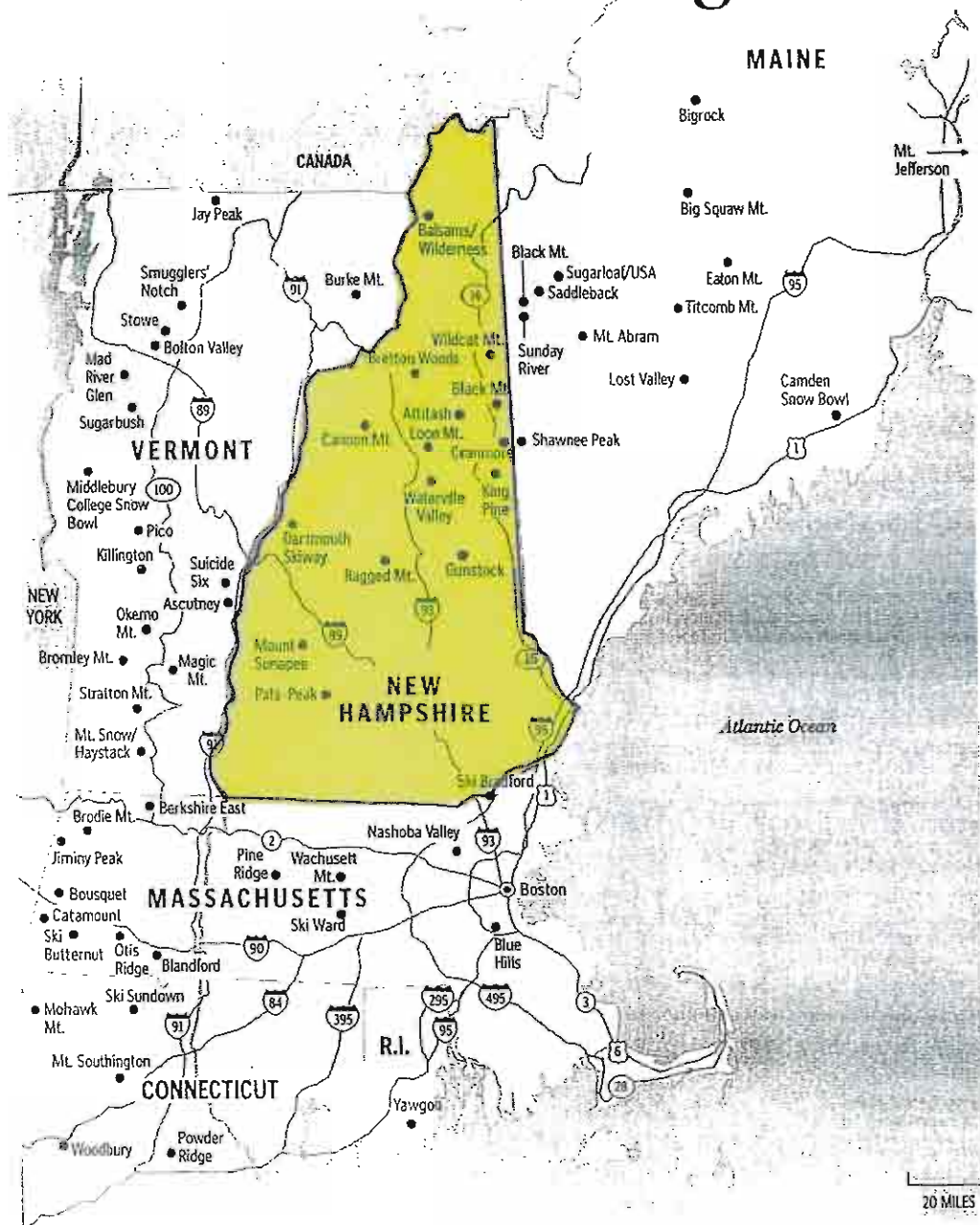
The section is in alphabetical order with information on the following New Hampshire competitors:

- Attitash
- Bretton Woods
- Cannon
- Cranmore
- Gunstock
- Loon
- Ragged Mountain
- Waterville Valley
- Wildcat



# Map of New England and New Hampshire ski area competitors

## Ski areas of New England





**NOR'EASTER**  
MOUNTAIN COASTER

### MOUNTAIN COASTER

Enjoy the most sought after thrill ride in New Hampshire, the Nor'Easter Mountain Coaster, an exhilarating and scenic attraction for all ages.

Ride in two-person sleds on a scenic 1,420-foot trip uphill on twin, stainless steel rails before a heart-pounding 2,880-foot journey down our forested mountain terrain. Cruise at rider-controlled speeds of up to 25 miles per hour through banked curves, dips and a vertical drop of over 300 feet.



*"I loved going right through the woods and recommend highly that everyone rides this Mountain Coaster ... more than once."*

Lauren Mahoney  
Burlington, Mass.

# Attitash Mountain Resort



### ACCOMMODATIONS

Stay slope-side in the summertime!

From cottages to condominiums and weddings, make the Attitash Coaster Summit your summer destination. Remember, kids eat for FREE at Crispbread's Restaurant during your stay. Book today! 800.223.5527



### GROUPS AT ATTITASH

With a group of 20 or more, we can provide a variety of fun and exciting opportunities for your group. See our group pricing and Admission Rates. For more information contact our Resort Sales Manager at 802.374.2617

### EVENT SCHEDULE

#### Put on Your Downhill Skis!

July 13 - August 17, 2011

This 6-week downhill ski season is a complete formal lift. \$20 to enter, \$100 to ski. \$10 for daily entry. Visit Our Trail Site 2011 to register!

#### 14th Annual Oktoberfest

October 6-8, 2011

Join us in Oktober Day Weekend at Sun Peak and enjoy authentic German food, live Bavarian music, children's activities, games and the Oktober Beer Garden. Making history from 1897 to the present.

### ATTITASH MOUNTAIN RESORT

Route 102, Berlin, NH 03570  
802.374.2600 or 800.223.5527  
Cable 44-2786 Longview 77-2577

attitash.com



# Attitash Mountain Resort

*Celebrating 55 years of mountain fun in the Valley*

**NOR'EASTER**  
MOUNTAIN COASTER  
New Hampshire's  
most exciting  
new ride!



SUMMER 2011

attitash.com



ATTRactions

RATES

GROUPS & MEETINGS

## Attractions

### Summer Attractions

Discover history and adventure this summer at Attitash Mountain Resort. We began our summer operations in 1976 with the Alpine Slides, New Hampshire's favorite summer attraction for 35 years! New this summer, enjoy the most sought after thrill ride in New Hampshire, the Nor'Easter Mountain Coaster, an exhilarating and scenic attraction for all ages. We also offer waterslides, horseback riding, mountain biking, scenic chair rides and more!



#### Nor'Easter Mountain Coaster

Enjoy the most sought after thrill ride in New Hampshire, the Nor'Easter Mountain Coaster, an exhilarating and scenic ride for all ages.

Young or old, you can set your own pace at speeds up to 25 miles per hour and enjoy a fun and unique ride unlike any other!



#### Alpine Slides

The Alpine Slides are the longest in North America, checking in at just over one mile long! Ride up the Flying Yankee Quad to begin this exciting journey down the mountainside! Thrill-seekers and leisure riders alike will enjoy this scenic and exciting descent down Attitash Mountain. These two-person sleds run on twin tracks at rider-controlled speeds.



#### Horseback Riding and Pony Rides

Our trail guides lead groups on hour-long horseback rides along the tranquil Saco River and through the Fields of Attitash. No experience necessary!



#### Mountain Biking

Attitash has over 20 miles of mountain bike trails for all abilities, including 27 downhill trails and 8 cross country trails. Enjoy our scenic cross country terrain along the Saco River, or ride our extreme, lift-accessed downhill terrain on Attitash.



#### Aquaboggan Waterslides

Enjoy our variety of waterslides as you experience the fun of hairpin turns and underground tunnels before splashing down into the pool along three different routes.



#### Sidewinder Waterslide

Rafts or tubes, take your pick and plunge down the rapids of the Sidewinder for some wet and wild summer fun.



#### Buddy Bear's Playpool

From a treehouse and a cool waterslide, to the splashing pool and the water spouts, Buddy Bear's Playpool is big kid fun for the little ones.



#### Scenic Chair Ride

Climb over 1,700 vertical feet on a round-trip tour to the summit of Attitash, where the spectacular, 360-degree views of the Presidential Range and the Mt. Washington Valley await you atop the White Mountain Observation Tower.



#### Climbing Wall

Reach for the top of the Attitash 24-foot climbing wall, as our staff belays you up and guides you through the basics of climbing. Novices and advanced climbers alike will enjoy the challenge of the three different available routes.



#### **EuroBungy Trampoline**

A harness, connected by bungee cords, lets you jump, flip, and defy gravity as you soar over two stories high on the EuroBungy Trampoline!



Attitash Mountain Resort is proud to be a part of the **White Mountain National Forest**. Attitash is also a member of the **White Mountain Attractions Association of New Hampshire**.



Bretton Woods

ALPINE | NORDIC | **CANOPY TOUR** | GOLF | SPA | RESORT ACTIVITIES | LODGING | DINING | SPECIALS

RESERVE YOUR VACATION NOW

CANOPY TOUR

Overview | Rates | The Tour | FAQ

- Overview
- Rates
- The Tour
- Who Can Participate
- FAQ
- What To Bring
- Your Guides



2012/13 Mountain Weather Update: Snowed out of a run! available online now! [Read Details](#)



Two Golf Courses Open for Summer 2014! [Read Details](#)



2014 New Hampshire Open Golf Course You Can Play in 2014! [Read Details](#)



[Send this to a friend](#)

**Overview** | [Check out our Special Offers](#) | [Introducing the Bretton Woods Club](#)  
For more information, please call 603-275-4ZIP (4347)

*The year-round Bretton Woods Canopy Tour is open daily and is sure to be an experience you will never forget!*



722 people like this. Be the first of your friends.



SHARE



**Bretton Woods Canopy Tour**

[Overview](#)

Located right here in Bretton Woods, NH, and descending over 1000 feet of elevation, the tour takes nature-lovers and thrill-seekers across a series of tree-top zip lines through a network of platforms high in the ancient hemlocks. High-flying suspension bridges and hiking trails connect the nine zip lines, and the tour concludes with the Williwaw Racing Zip, a dual, side-by-side zip line leading right into the Bretton Woods base area!

Designed and constructed by Bonsai Design Inc., this unique canopy tour features a dual-cable construction (you slide below two separate cables, instead of just one), coated cables (to make for a quiet, more natural flight through the trees) and platforms and bridges milled from locally-harvested wood sources, in keeping with our commitment to environmentally sustainable programs.

Once on the tour, our Adventure Guides describe the native flora and fauna, in addition to discussing the surrounding area, its natural history and White Mountain lore. Each pair of guides may accommodate up to eight participants.

All in all, a unique New Hampshire experience not to be missed!

**Williwaw Racing Zip**

[Overview](#)

The Williwaw Racing Zip is a great way to sample the last zip line of the Canopy Tour and is a thrilling ride on its own. One ride takes about 20 minutes, including getting harnessed up, transported to the top and getting unharnessed. Plus - you may take multiple rides at a reduced rate, provided you stay in your harness and do your rides in immediate succession!



{ photos & cams }



PLAY (~8 min.)



ADVENTURE CENTER

Adventure Center | More Summer Fun | More Winter Fun | Just For Kids | Shopping | Adaptive | Calendar

- Overview
- West Wall Climb
- Slopeside Climbing Wall
- Williwaw Racing Zip
- Scenic Lift Rides
- Downhill Mountain Biking
- Disc Golf
- Canopy Tour
- Summer Trail Maps

[Send this to a friend](#)

**West Wall Climb - NEW for 2011** | [Check out our Specials](#)

For more information, please call the Adventure Center at 603-278-3335.

Like 21 people like this. Be the first of your friends.

SHARE

All-new for summer 2011 - the West Wall Climb at the Bretton Woods Adventure Center. Located on the South side of Mt. Oscar, better known to the Bretton Woods skier as West Mountain, this rock climbing experience is designed for people with a wide range of climbing abilities, and previous climbing experience is not required.

Choose from several routes, all approximately 300 feet in length, and ascend up a granite cliff to an elevation of 3000 feet. Situated in the White Mountain National Forest, the low-angled cliffs provide an open vista of the Pemigewasset Wilderness and Zealand Valley.

This four-hour guided rock climb is tailored to each group, based on individual abilities and goals. One guide will accompany up to three guests, and our guides will work with each group to choose the most appropriate route. Fixed ropes may be used as aid, if needed, but are not required to climb the routes. Harness, helmet and rubber soled shoes will be provided.

Schedule:

- Extended dates - now available daily until October 31, 2011
- Reservations are required and may be made at 603-278-3335

Cost (per person):

- Private/Individual Climb: \$175 (Resort guests \$158)
- Semi-Private Climb (2-3 climbers): \$125 (Resort guests \$115)

Restrictions:

- Participants must be at least 12 years old and safely fit in the harness provided.
- Participants under the age of 18 must be with an adult.
- Each participant needs to be in relatively good physical condition and be able to walk over uneven ground.

Cancellation Policy:

All reservations are charged in full at the time of booking. There will be a \$35 processing fee for any cancellations made less than 15 days before your scheduled tour. The remainder of your payment will be refunded to you. Cancellation of your reservation less than 48 hours prior to the day of your tour will result in a forfeit of the full amount of the reservation.

If your tour is cancelled due to weather or other unforeseeable conditions, we will make every attempt to contact you ahead of time. If we call you within 24 hours you will receive a full refund or have the opportunity to reschedule. However, this 24 hour notice may not always be possible due to the unpredictable nature of the weather in New Hampshire. If we cancel your tour within the 24 hour period we will reschedule you for a later date or give you a gift certificate for the full amount good for use anywhere at the Mount Washington Resort.

You are required to arrive promptly at your scheduled start time. You will not be given a refund or a gift certificate if you are late for your tour, and you will not be able to join the tour if you are late. The tour will leave at the scheduled time whether the whole group is there or not.



2011/12 Bretton Woods Season Passes available online now! [Read Details.](#)



West Wall Climb NEW for Summer 2011 [Read Details.](#)



18-Hole Mount Washington Course by Donald Ross Voted #1 Course You Can Play In NH [Read Details.](#)



Gift Certificates A great gift for all occasions - buy yours online now! [Read Details.](#)



The Spa spoil yourself... [Read Details.](#)





Today Snow Report Summer - Mitesill  
 New Snow: 0" Get Email Alerts Search  
 Open Trails: Opening Nov. 25 Q  
 Lifts: 0  
[The Mountain](#) [Pricing](#) [Area Lodging](#) [Family](#) [Learn To](#) [Media](#) [About](#)

ABOUT US

- [I am Cannon](#)
- [Mittersill History](#)
- [Cannon History](#)
- [Snowmaking & Grooming](#)
- [Catering and Functions](#)
- [Franconia Ski Club](#)
- [Awards](#)
- [Employment](#)
- [Directions and GPS](#)
- [Contact Us](#)

## History of the Mittersill Ski Area

The New Mittersill Double Chair opened at 8:30am on January 1, 2011. This lift will operate whenever the Mittersill Terrain Area is considered open (check the [report](#) for status) Lift tickets or season passes required and available at Notchview Welcome Center.

[See the latest Mittersill updates.](#)



The History..

PAST:

In 1933, the Taft trail was constructed, thanks in large part, to the efforts of Kate Peckett of Sugar Hill. The Taft ran from the top of Cannon Mountain down to the saddle with Mt. Jackson, then down the north slope. 5 years later, in 1938, the Aerial Tramway was opened, providing lift service to the Taft, along with several other trails, mainly on the Cannon Mountain side.

In the several years prior to 1938, Baron Hubert von Pantz had been renovating the Schloss Mittersill outside of Kitzbuhel, Austria. The Schloss was taken over by the German Army in 1938, and the Baron fled the country later that year. In 1939, the Baron arrived in the United States, at the Lake Placid Club, where he found bobsledding, and ski jumps, but *skiing* was only available by climbing. He took a taxi from Lake Placid to Franconia to look over the new Tramway at Cannon. Over the next several years, he raised money, and in 1941, purchased 550 acres on the north slope of Mt. Jackson, including a section of the Taft trail.

He and some partners developed a hotel, built several chalets, and installed a ski lift, and in 1946, Mittersill opened for business. Three years later, in 1949, Swiss Paul Valar and Austrian Paula Klein arrived in the area. Paul would found the Franconia Ski School at Cannon, and with Paula, would run the ski schools at Mittersill and Mount Sunapee through the 1970s.



In 1950, the Baron left the area, and returned to Austria- back to the Schloss Mittersill. He found it heavily damaged, and began work to restore it once again. Back in NH, Mittersill ski area began early experiments with snowmaking, based loosely on a lawn sprinkler system.

In 1961, the Professional Ski Instructors of America was formed, with Paul as one of the 7 original incorporators.

By 1969, Mittersill had 2 T Bars, and a Hall Chairlift, with a vertical drop of over 1000 feet.

The winters of 1980 and 1981 were very poor ones for winter sports, and Mittersill

Alpine Resort suffered large losses as a result. In the 80's, the area was operated by the Franconia Development Co. The area finally was closed in 1984, and in 1989, the Special Use Permit from the Forest Service was terminated. The privately held lands on which most of the ski area was located were transferred to the State of NH for the cost of one dollar, an effort spearheaded by the Valar family.

#### 1990 - 2009

The ski trails in the Mittersill area were partially overgrown, although some had been kept clear by individuals, in spite of state and federal restrictions. The area is home to several federally listed sensitive species, including the Bicknell's Thrush, Peregrine Falcon, and possibly, the Canada Lynx. On the site of the ski area, there remained lift towers, top and bottom terminals, and miscellaneous lumber.

On March 25, 2009, a celebration in the Governor's Executive Council Chambers marked a long-anticipated exchange of federal and state lands. After extended contemplation and study, 100 acres of the upper portion of the dormant Mittersill Ski Area joined the system of State Lands as part of Cannon Mountain Ski Area; and the 244 acre Sentinel Mountain Forest, including approximately ¼ mile of the Appalachian National Scenic Trail, became federal land to be administered by the White Mountain National Forest. Governor John Lynch, Forest Supervisor Tom Wagner, and Appalachian National Scenic Trail Park Manager Pam Underhill joined in the celebration.



March 26, 2009 - The official "rope cutting" ceremony takes place on the Taft Trail with nearly 500 people in attendance. Christina Valar Breen and son, Cannon Breen cut the rope between Cannon and Mittersill, officially reopening the Mittersill ski area as part of Cannon Mountain. Many in attendance completed the hike and skied Mittersill "legally" for the first time in 20 years.

#### Summer 2009:

Cannon trail crew completed some limited trimming and clearing of some trail areas, and the removal of some hazards. The access from the Taft Trail on Cannon to the top of Mittersill was widened along with the route from the summit of Mittersill to the top of the old double chair. For the winter of 2009-2010 the area would be managed as one large gladed area, with all of the accompanying hazards and referred to as Mittersill Terrain Area/Backcountry Area. Contrary to the belief of many people, the area is not easy terrain. Much of it is steep and narrow, and must be used with extra caution, with extended rescue time a probability. Any construction of a lift at Mittersill was considered at least 1-2 years away, possibly longer.

During the land exchange process between the State of NH and the US Forest Service, an agreement was reached that would limit any cutting on the Mittersill site above the 2500 foot elevation to match, but not exceed, the 1989 trail and lift line footprint. This agreement was reached in an effort to ensure the viability of the Bicknell's Thrush and other species on Mount Jackson. Because of this agreement, and the width of the lift line, any lift accessing the upper elevations at Mittersill will be a double chair. Higher capacity lifts require a wider liftline, which does not exist in the old footprint.

#### Winter 2009 - 2010

Cannon opened and managed the terrain on Mittersill as a lift-accessed backcountry area (via the Tramway and Cannonball Quad).

The trail crew completed some thinning and brush cutting for ease of access, but nothing to change the culture or skiing & riding experience. With no snowmaking, limited grooming, very limited patrolling and extensive rescue time, the area carried a designation of "Extra Hazardous."

Cannon ran a weekend/holiday shuttle service from the base of Mittersill to Peabody/Notchview when Mittersill was open. Mittersill was considered "officially open" for approximately 45 days during the season. When shuttles were running, they carried up to 300 people per day back from Mittersill.

Cannon also offered Guided Mittersill Tours (at Snowsports School): \$55  
10:00am on Saturdays & Sundays, conditions permitting. Roughly 2 hour guided tour to explore the new Mittersill Backcountry Terrain Area! For Intermediate & Advanced skiers and riders. Some hiking involved.

#### Summer 2010

Installation of the Mittersill Double Chair begins!

The double chair is being installed in the same location as the old chair and is expected to open in early 2011.

Cannon plans to run the Mittersill Double Chair EVERY DAY that Mittersill is determined to be open and skiable (not just on weekends and holidays).

Gallery - September 22-23, 2010 - a Sikorski S61 helicopter is used to fly concrete for the lift tower footings and then remove the old lift towers to make way for the new!



Enter Search...



[Home](#) | [About Us](#) | [Attractions](#) | [Skiing](#) | [Activities](#) | [Summer Events](#) | [The Grindlog](#)



### Rides & Attractions

[Rides & Activities](#)  
[Rates & Buy Online](#)

[RESERVE TICKETS ONLINE](#)

### Hours of Operation

Open Weekends from Memorial Day, May 28 through June 12 from 10am - 5pm

Open Daily from June 18 - Labor Day, Sept. 5 from 9am - 6pm

Open Fall Weekends through October from 10am - 3pm

*Limited fall operations and schedule after Columbus Day. Call for details.*

### Rides & Activities

For the remaining weekends in Oct., we will be operating only our Mountain Coaster and Giant Swing from 10-5pm. Unlimited ride pass for both costs only \$19 per person. Single ride tickets also available.

Cranmore Mountain Summer Adventure Park offers a variety of fun rides and activities for all ages. A day at our Park is a great way to spend a summer day in the White Mountains and just 1 mile from North Conway Village.

#### Take a wild ride on our Mountain Coaster

Thousands of feet of twisting, turning fun flying through the woods. You control the speed for a leisurely ride or a screaming fast run through to the end.

- All ages 3 and over welcome
- 1315 feet up and 2390 feet of downhill track
- Speeds up to 25 mph
- Children 9+ years and 48" and taller may ride solo



#### Fly on the Giant Swing

You and up to three friends will arc higher and higher in the sky as the Giant Swing takes you to the limit.

- Children 42" or taller may ride with an Adult (16+)
- 50" or taller may ride solo
- Maximum weight 300 lbs per person.



### Try Summer Tubing

Ride the conveyor to the top and ride 400 feet to the bottom. Tubes provided as part of your admission.

- Great fun for all ages
- Minimum height 42"
- Children 42" and under can ride with a ticketed adult
- Closed toe shoes are required for Summer Tubing



### Spring into our Bungy Trampoline

Go wild on our four-station, Bungy Trampoline. Bounce on over for great fun and excitement.

- Minimum 40 lbs.
- Maximum 225 lbs.



### An 18-hole Disc Golf Course

This course goes up the slopes and all across the base area for lots of fun.

- Bring your own discs - or borrow a set for a returnable deposit.



### Climb Spider Mountain

It's a 24-foot tall cylinder that kids can climb up into - with a large inflatable slide to bring them back down.

- Minimum 40 lbs.
- Maximum 140 lbs.



### Penguin Mini-Golf

A 9-hole course with a Penguin theme, featuring Cranmore's mascot, C-More the Penguin.

- This course is appropriate for small children

### Bouncy Houses for everybody

We have large and small bouncy houses for kids to climb in, play in, and enjoy.

- Great for almost any age





Enter Search...



General Info | Aerial Adventure Park | Rides & Attractions | Lodging | Maps & Directions | Seasonal Events | The Chalet



### Aerial Adventure Park

Elements & Courses  
Reservations & Buy Online

**RESERVE TICKETS ONLINE**

### Hours of Operation

Open Weekends from Memorial Day, May 28 through June 12 from 10am - 5pm

Open Daily from June 18 - Labor Day, Sept. 5 from 9am - 6pm

Open Fall Weekends through October from 10am - 5pm

*Limited fall operations and schedule after Columbus Day. Call for details.*

### Aerial Adventure Elements & Courses

Aerial Adventure Park is now closed for the season. Our Mountain Coaster and Giant Swing will be open weekends through 10/30 from 10-5pm. Please come back Memorial Day weekend 2012 to visit the Aerial Adventure Park!

What's it like? Read this first-person account!

Aerial Adventure Park is an aerial forest ropes course consisting of 4 individual, elevated courses for different ability levels consisting of dozens of elements that will challenge you to new heights! The Aerial Adventure course is 3 hours of fun no matter what course you choose:

- Yellow Course
- Green Course
- Blue Course
- Black Course

You must complete a lower level before moving onto the blue and black courses.

Each course varies in terms of elevation and the strenuousness of the challenges. Elements include rope bridges, ladders, cargo nets, zip lines and more. All courses are self guided and every person is snapped into a guide line.

### Requirements

- Must be at least 6 years of age AND 48 inches tall
- Must be at least 60 inches (5 Ft) tall for the Blue & Black courses. Age restrictions still apply.
- Ages 6-8 may only use Yellow and Green Courses
- Ages 9-15 may use Yellow, Green and Blue Courses
- Ages 16+ may use all courses including Black
- Must complete each course before moving up to the next level
- Sneakers or hiking shoes required/closed toed shoes.
- Women who are pregnant and anyone who has had a kidney transplant may not use Aerial Adventure Park.



Gunstock Mountain Adventure Park

- [Frequently Asked Questions](#)
- [Group Adventures](#)
- [GMAP Deals](#)

[Fun Shack Activities](#)

[Scenic Lift Rides](#)

[General Store](#)

[Explore Gunstock](#)

[Shop Online](#)

**Keep in Touch**

How can Gunstock make you happy? Sign up for our newsletter and tell us more!  
[Click here to sign up](#)

**Gunstock Mountain Adventure Park**

Taking Reservations

Now! We are open!  
 Call 603-737-4388  
[Click here for the Adult Segway Waiver](#)  
[Click here for the Minor Segway Waiver](#)

Segway Tours	Cost	Ages	Weight Restrictions
Adult	\$88	14+	70lb - 250lb

Taking Reservations Now! We are open!  
 Call 603-737-4388  
[Click here for the Aerial Treetop Adventures FAQ sheet](#)  
[Click here for Aerial Treetop Adventure Waiver](#)



ATA Course	Cost	Ages	Height / Weight Restrictions
Adult	\$45	12+	reach 5'1" with fingertips <266 lbs.
Explorer	\$25 for 2 circuits	6 - 11	reach 4'-7" with fingertips
Opening June 4			

**What happens in bad weather?**

ATA is an excellent wet weather activity but is even better when dry! The course remains open in all weather conditions, except when it is icy, stormy or during lightning. Rain makes the course slicker and the ground muddier than usual - which all adds to the fun and adventure for many people! However, since you are beneath the forest canopy, it is a lot drier than standing out in an open field. Whatever the case; dress for the weather. You may want to bring a change of clothing for the journey home.

**What is your cancellation policy?**

You can cancel your Adventure by calling the Adventure Park reservation line at 1-603-737-4388. The policy reads:

Cancellation 48 hours or more prior to Adventure – Full Refund

Cancellation less than 48 hours prior to Adventure – Rain Check by reservation (Full Value, valid until the end of the current season)

No call for cancellation or no show – Loss of Payment

Sometimes, unfortunately, we might need to close the course for reasons beyond our control. If you have already started the course you will not be entitled to any refund (in part or in whole). We will do our best to offer alternative dates or times at reduced rates.



Coming Soon! Call for updates 603-737-4388.



[Pick Your Season](#) | [Summer at Gunstock](#) | [Golfing](#) | [Event Services](#) | [The Lakes Region](#) | [Golfing](#) | [About Us](#)

[Home Site / Home](#)

[Gunstock in Winter](#)

Copyright © 2011, Gunstock Mountain Resort

719 Cherry Valley Road, Gifford, New Hampshire | 603-293-1341

[Website by Premier Media Works](#)



Gunstock Mountain Adventure Park

**Fun Shack Activities**

- Mountain Activity Pass
- Mountain Bikes
- Skate Park
- Individual Activity Prices

Scenic Lift Rides

General Store

Explore Gunstock

Shop Online

Search

**Keep In Touch**

How can Gunstock make you happy? Sign up for our newsletter and feel us out!  
[Click here to sign up](#)

## Fun Shack Activites



Gunstock Mountain Resort offers numerous activities for both campers and day visitors. These activities include kayaking, paddle boating, mini-golf, skate park, mountain board park, BMX Bikes (in the park only), climbing wall and more. Mountain Bikes and Campground Cruiser bikes are also available for daily rentals.

Gunstock's Mountain Activity Pass provides access to all of these activities (excluding bike rentals). Mountain Activity Passes are available to anyone visiting the resort for the day, guests in our campground and, on a seasonal basis for frequent visitors. These activities can also be purchased individually, on a per use basis. Passes can be purchased at the Mountainside Outfitters Camp Store.

The Funshack opens Memorial Day weekend and will operate through Columbus Day weekend.

Dates	Operating Hours
May 27 (Memorial Day Weekend) - June 19 (Father's Day)	Friday 1pm - 7pm Saturday 9am-7pm Sunday 9am-4pm
June 20 - September 4 (Outdoor Day)	Daily 9am - 7pm
September 5 - October 10 (Columbus Day)	Weekends Only Saturday 9am-7pm Sunday 9am-4pm



[Did You Know?](#) [Summer at Gunstock](#) | [Catering](#) | [Event Services](#) | [The Little Resort](#) | [Events](#) | [About Us](#)

Find Us Here

Gunstock at Work

Copyright © 2011, Gunstock Mountain Resort



**SUMMER IS MORE FUN AT 3,000 FEET!**



Soar to the summit on the 7,000-ft **GONDOLA SKYRIDE**,  
fly across the river on the **BRAND NEW ZIPLINE**,  
hit the trail on **HORSEBACK**...and more!

**\$AVE with the LOON ADVENTURE PACKAGE!**

A whole day of fun including Gondola Skyride, Zipline, Unlimited Bungee Trampoline & Climbing Wall, plus a two-hour Mountain Bike Rental. Junior package also includes a Pony Ride.

Just **\$39** for Adults & **\$29** for Juniors (age 6-12)!

See details and special events calendar at [loonmtn.com](http://loonmtn.com)



**HORSEBACK RIDING** ■ **BUNGEE TRAMPOLINE** ■ **NEW! ZIP LINE**

**Mountaintop Glacial Caves** ■ **Hiking Trails** ■ **Climbing Wall** ■ **Summit Café**

**Artisans' Village** ■ **Gift Shop** ■ **Special Events** ■ **Mountain Bike Rentals & Tours**

Conveniently located off I-93 and the Kancamagus Highway in Lincoln, NH!

60 Loon Mountain Road | Lincoln, NH 03251 | 603-745-8111

**FEATURING NEW HAMPSHIRE'S LONGEST GONDOLA SKYRIDE**



First Name

Last Name

Newsletter Field



Phone: 802.788.8000  
 120 Ragged Mountain Road  
 Danbury, VT 05236

Follow Us!      ShareThis

### What's Going On

**New Year's Eve Celebration - 12/31/11**  
 7:00PM  
 Come on up and ring in the New Year Ragged Mountain style! Music by the Longtailed Monkeys and Nick's Other Band. Stay tuned for details. It will be a party you won't want to miss!... [\[Read More\]](#)

WELCOME TO RAGGED MOUNTAIN



First Name

Last Name

Newsletter Field

## GOLF COURSE INFORMATION

### Ragged Mountain Golf

What could be better than a great day of golf? How about a day of golf in a magnificent mountain setting where the longest drive is on the green, not in the car!

Ragged Mountain's beautiful 18 hole course attracts gullers for its challenging terrain and views so spectacular it is hard to keep your eye on the ball. We are open to the public 7 days a week, from 7am - 7pm. Golf lessons are available by PGA Pro Les Wilkins; call the Pro Shop for reservations at 768-3600.

Prices are as low as \$199 including cart so purchase yours online now or at the Pro Shop. We are also offering our 6 point punch card this season. Purchase your 6 Point Punch card for just \$119, and you can play it your way! Mix and match as you like. 1 punch to play weekdays and 2 punches to play weekends & holidays you can be playing 18 holes with cart for less than \$20 midweek! Get yours **HERE TODAY!**

We are running some **super summer deals** - For just \$5 more than our regular rates, receive an entree of your choice at The Pub. Or, stay at our golf house and enjoy special pricing including unlimited golf.

Located in Danbury, less than an hour from Manchester and around 30 minutes from the Upper Valley.

*Ragged Mountain Golf - Play it if you can! Enjoy the scenery if you can't!*

### Follow Us!



[Share This](#)

# CONCORD MONITOR

Published on *Concord Monitor* (<http://www.concordmonitor.com>)

[Home](#) > For resort, overseas hopes

DANBURY

## For resort, overseas hopes

'Immigrant investors' will be able to get green cards

By [Ben Leubsdorf](#) / [Monitor staff](#)

Created 10/16/2011 - 00:00

The owners of the Ragged Mountain Resort are looking to sign up deep-pocketed Chinese and other foreign investors to finance a \$35 million expansion at the Danbury ski area and golf course.

And they're offering more than potential future returns. Using a federal program intended to attract "immigrant investors," the resort can offer green cards to foreign nationals who invest at least \$500,000 so they and their families can relocate to the United States.

"It's attracting foreign investment. But more importantly, it's allowing these companies to do job creation - which, in our economy, is a prevalent issue," said David Strong, chief operating officer of Utah-based developer Pacific Group.

Ragged Mountain was purchased in 2007 by a Pacific Group affiliate. The company has made improvements to the resort since then, and has worked with town officials on a long-term expansion plan.

The first phase, with a total price tag of \$35 million, calls for replacing the lodge and adding a 40-unit hotel, condos, a spa and other facilities. Some \$24.4 million is earmarked to add a new ski lift, install a mountain coaster, create a mountain-bike course, improve the golf course and make other upgrades.

But the plans have been on hold due to the economy. Strong said banks have "tightened their level of wanting to lend" in recent years.

Since last year, the resort's owners have worked with the state and federal governments to have the resort designated as an eligible project for what's known as the EB-5 visa program. The program was created in 1990 "to stimulate the U.S. economy through job creation and capital investment by foreign investors," according to the U.S. Citizenship and Immigration Services website.

Gov. John Lynch and George Bald, commissioner of the Department of Resources and Economic Development, both sent letters to federal officials supporting the designation for Ragged Mountain and its surrounding towns.

"In a market like this, where it's difficult to get capital, it's a great alternative," said Michael Bergeron, business development manager at the department. "And a lot of these projects

are in areas around the U.S. that are rural, they have high unemployment . . . so it's a great way to bring capital and create jobs in places that really need help."

Under the EB-5 program, foreign nationals must invest at least \$1 million - or \$500,000 for projects in rural areas like Danbury - in a designated project, creating at least 10 full-time jobs in the area. In return, the investors, their spouses and unmarried children under 21 can get green cards allowing legal residency in the United States.

In 2010, 1,885 visas were granted under the program, down from 4,218 visas in 2009 but up from 1,443 visas in 2008, according to the department.

Any investors in Ragged Mountain won't be required to live in New Hampshire; the green cards don't restrict where they reside. The application process includes background checks, Strong said.

"This is ideal for the EB-5 program," he said of Ragged Mountain. "The nature of the real estate, the nature of the resort, the overall asset as a whole is very appealing for foreign investors."

The federal government approved the designation last month. Pacific Group has created the New Hampshire EB-5 Regional Center to run and promote the program, with Strong as its president.

The center's website, [newhampshireregionalcenter.com](http://newhampshireregionalcenter.com), comes in two languages: English and Chinese. Strong said Chinese investors are the project's main target, though there has been interest in EB-5 investments in England, India, Russia and South Korea as well.

"In the Chinese markets, they enjoy real estate. And specifically, if we look at the United States, they see it as a great investment opportunity because of the distressed real estate markets," Strong said.

A trip to Beijing, Shanghai and other Chinese cities for company and resort officials to meet with potential investors is planned next month, he said. The company's "conservative estimate" is to raise the entire \$35 million within 16 months, he said.

Bergeron said Ragged Mountain is the first New Hampshire project to participate in the EB-5 program, though two others, one in Plymouth and another in southern New Hampshire, are in the process of seeking approval.

The resort's owners have spent years working with Danbury's planning board on a long-term framework covering development on the mountain, though individual phases have to come back to the board for final approval, said Bernie Golden, chairman of the town's board of selectmen.

Golden said the town has been careful to make sure there isn't "uncontrolled growth" on the mountain that could stress infrastructure and services in the town of 1,164 as of last year's U.S. Census. He said the plan is to eventually build 800 units, mainly second homes, on the mountain.

"Generally speaking, the town is supportive of Ragged's efforts," Golden said. "They're the largest employer in town and they're the largest taxpayer in town, and we see this as a financial plus for the town when and if they move forward with their plans."



Conferences, Meetings & Parties

## Play & Explore

Adventure Center

Hiking

Boating

Golf

Tennis

Indoor Ice Arena

Athletic Club

Kids Programs

## Buy Online



Lift Tickets



Seasonal Programs



Season Passes

Shop Online

## Book Your Stay

Check-in date:

Check-out date:

Lodging Type

All Lodging

BOOK IT

Best reviews on TripAdvisor



## Adventure Center

### Mountain Biking & Snow's Mountain Chairlift Rides

Waterbury Valley's Mountain Bike Park will continue to take riding to new heights this summer! You can take the chairlift up to the top of Snow's Mountain with your bike and head down a variety of trails for all abilities through the National Forest. Everything from meandering dirt fire roads to gnarly single-track is available. With over 33 miles of marked, well-maintained trails, Waterbury Valley is a mecca for mountain bike enthusiasts.

The trail network winds through the White Mountain National Forest, using parts of our cross-country ski trail network, old logging roads, fire roads, single track and hiking trails. There's also plenty of road-biking available too on our miles of smooth roads winding throughout the valley.

State-of-the-art bikes are available for rent, including Giant full suspension and road bikes, trailers, and more.

### Lift Accessed Mountain Biking

Snow's Mountain, located next to the Tennis Center, offers a variety of downhill and cross-country mountain biking routes, all served from a double chairlift. Trails vary in ability level, from the challenging routes down the front of the mountain and the Elephant Rock trail to the more relaxed Livermore Road.

Suspension bike rentals are available, along with mountain biking packages which include bike rentals and use of the Snow's Mountain lift. [E-mail The Adventure Center](#) for details or questions.

Hikers and bikers can both use the lift.

## OUTDOOR ADVENTURES

# Bringing it back to Waterville

New ownership looks to revitalize area

By [Marty Basch](#) / [For the Monitor](#)

Chris Sununu is looking to bring Waterville Valley into the 21st century while returning to its competitive skiing roots.

Sununu and a group of investors purchased the ski area from Booth Creek Ski Holdings in October - reportedly for less than \$12 million, but that number may be a little high - and are looking to both modernize it as a premiere four-season destination resort while returning it to the glory days when 11 World Cups were held there.

Though seeing the X Games at a Waterville Valley isn't realistic, a Dew Tour could be.

"We have to be realistic about what is practical," said Sununu, 36, in his postage stamp-sized office. "There are new standards. We will go after the World Cup races. We will aggressively go after the nationals."

From one of New Hampshire's most influential families, Chris is the son of former governor and chief of staff John Sununu and brother to former senator John E. Sununu. The newly elected executive councilor from Newfields, he graduated from MIT and worked for 10 years as an environmental engineer before becoming Waterville's CEO. He also works in the family consulting business and brother John is chairman of the board of the Waterville holdings. A life-long skier, Sununu hiked the entire Appalachian Trail in 1999 and is a few peaks short of climbing all of New Hampshire's 48 4,000-footers. He's married and a father of two.

His skis may still be nearly straight (first generation parabolic Volkls) but his turns were strong later on as he skied down the bend from Oblivion to Upper Valley Run to warm up before heading down the steps of Ciao.

His management team is augmented by ski industry veteran Bob Fries. Fries, president, once was Waterville's general manager for 19 years. White Mountain Athletic Center owner Tom Gross rounds up the troika as president of valley operations.

Sununu acknowledges his family name has political cache and name recognition.

"Above and beyond the Sununu name, I think the team we put together is much more powerful," he said.

The most-linked name to Waterville was Tom Corcoran, the Olympic skier who in 1965 developed the resort on 4,000-foot Mount Tecumseh in the White Mountain National Forest that now includes cross-country trails and town center.

Sununu has high praise for Corcoran, saying he got it right by bringing in competitions, celebrities and being cutting edge for his time. Freestyle skiing has its roots at Waterville, while Olympic gold medal mogulist Hannah Kearney and two-time Olympic snowboarder Michelle Gorgone are both products of the Waterville Valley Black and Blue Trail Smashers ski club.

Sununu wants to put a 21st century "tinge" on 52-trail Waterville by remaining current in its many terrain parks, including expanding its halfpipe from 15- to 18-foot walls this season with a recently purchased Zaug pipe cutter from Aspen.

He also wants to grow.

"We are looking to expand trails next year," Sununu said, and perhaps a few more the year after that.

First, a new master plan must be done. The last one was some 13 years ago. And then they must go through the U.S. Forest Service process. Even a skier with politics in his blood knows that may take some time. At best, a new master plan could be ready by late summer or fall.

Sununu says Waterville has historically done well during weekends and holidays, but he wants to see the place alive midweek and shoulder seasons, too. The 300,000 skier visits reported in 1992 fell to less than 170,000 last winter.

To get them back, he wants the resort to grow, market more aggressively, have more package deals (skiing, corporate, weddings, etc.) and be more involved with local businesses. Zip lines and canopy tours? Maybe. But more realistic might be better tubing in winter and geocaching, disc golf and more mountain biking and hiking in the summer.

"I'd love to see an indoor skate park," he said.

The master plan sits on a corner of Bob Fries's desk and hasn't been done since 1998. It's recommended to be done every 10 years or less, Fries says.

Fries has been out hiking Green Peak (also called Green Mountain), adjacent to Tecumseh and to the skier's left looking up from the base area. He's been looking at trail layouts and potential lift loading and unloading points.

"That area was always in the master plan from way back in the beginning," he said. "I'm hoping that will be relatively easy to get approved by the Forest Service."

Talk about looking ahead to bring something back.

*(Marty Basch can be reached through [onetankway.com](http://onetankway.com).)*



## Summer Fun Guide 2011



ZipRider  
Gondola Skyride  
Disc Golf  
Outdoor Tours  
Mountainside Café

Consistently Voted #1 Scenery in the East  
-Ski Magazine

Pinkham Notch, NH  
skiwildcat.com



## Hours of Operation...

EARLY SEASON (May 28 - June 5)

Open Weekends Only, 10 a.m. - 5 p.m.  
Restaurant & Retail Shop Hours: 9:30 a.m. - 5 p.m.

SUMMER & FALL SEASON (June 11 - October 16)

Open Daily, 10 a.m. - 5 p.m.  
Restaurant & Retail Shop Hours: 9:30 a.m. - 5 p.m.

Please Note: The last gondola of the day departs at 4:45 p.m., riding a full, non-stop loop from the base to the summit and back. Both the Gondola Skyride & ZipRider operate weather & wind permitting.

## Alpine Disc Golf

TAKE A CHALLENGE ON WILDCAT'S 9-HOLE,  
LIFT-SERVICED ALPINE DISC GOLF COURSE

Each player will receive a 3-disc rental set (or bring your own) comprised of driver, mid-range and putter discs. Each hole will have a white tee for advanced players and a red tee for beginners. Warm up at the practice basket located near the base of the Snowcat Triple chair before you go off to explore and play at Wildcat.



## DISC GOLF RATES

\$15 per person, includes lift ticket for two rounds of 9 holes & 3-disc rental set with carrying tote

\$10 per person, includes lift ticket for two rounds of 9 holes; rental discs not provided





- QUICK LINKS**
- Read the Wildcat Blog
  - Brochure Request
  - Join our Email List



**Ride NH's Highest Four-Passenger Gondola Skyride**

**#1 SCENERY IN THE EAST!** - Ski Magazine

**A Tradition of Year-Round Family Fun**

Welcome | Ski & Ride | Summer | Eat, Party & Shop | Stay & Play | Events | Home

**LATEST NEWS**

Wildcat Mountain is currently closed. Our scheduled opening date for Skiing & Riding is Friday, December 3, weather permitting. Stay Tuned and Pray For Snow!

**HOURS OF OPERATION**

2011 Season Opens Memorial Day weekend for weekends only until mid-June, then daily through Foliage in mid-October

Gondola Skyride: 10 am - 6 pm\*. The last gondola of the day departs at 4:45 pm riding non-stop to the base.

ZipRider: 10 am - 6 pm weather & wind permitting.

Restaurant & Retail Shop: 9:30 am - 6 pm

**IMAGE OF THE DAY**

**Some Early Sunday Turns In October**

A few Wildcat Mountain employees and friends got after some early season turns at Wildcat Mountain on the morning of Sunday, October 30 when a recent Nor'Easter blanketed much of New England. Dave Christler sent us a photo of rare October freshies.



**RESORT CAM**

For a closer, clearer view, click [HERE](#).



**WATCH OUR VIDEO**

Move arrow over video to have controls appear and "click play".



**UPCOMING EVENTS**

- 11/10 - Thu. - The Boston Globe Ski & Snowboard Expo
- 11/24 - Thu. - Thanksgiving Day - Closed
- 12/9 - Fri. - Wildcat Mountain Scheduled Opening Day
- 12/25 - Sun. - Christmas Day - Closed



**WILDCAT IN SUMMER & FALL - A Feast for All Your Senses**

**FLY WILDCAT!** Your visit to New England this summer & fall is not complete without a visit to Wildcat Mountain to experience the **Wildcat Express Gondola** and New Hampshire's **ZipRider™** zip-line cable ride

To view #1 scenery in the East (SKI Magazine), ride aboard our 4-person enclosed scenic gondola to Wildcat Mountain's 4,000+ foot summit. Gondolas run continuously so you don't wait in line. Fresh Lunch & Ride packages are available for you to enjoy a unique picnic experience and lasting vacation memory.

For the adventuresome, soar close to a 1/2 mile over tree tops, ski trails, and a river on the ZipRider™ zip-line cable ride at speeds up to 45 miles per hour! Now with 4 cable lines offering twice the capacity and even more vertical fun, ZipRider™ ticket sales begin at 9:30 a.m. and rides begin on a first come, first serve basis at 10:00 a.m.

► Gondola and ZipRider™ open Memorial Day weekend for weekends only until mid-June, then, open daily through Foliage in mid-October. Please note that gondola and ZipRider™ operation is weather-permitting and please view ZipRider™ weight and height restrictions below

**GREAT SUMMER VALUES!**

**2011 SUMMER RATES:**

**GONDOLA SKY RIDE**

Adults - \$15 • Seniors (ages 65+) - \$13  
Juniors (ages 6 - 12) - \$10 • Ages 5 & under - FREE

**LUNCH & RIDE OPTIONS**

Adults - \$22 • Juniors - \$17  
Seniors - \$20 • Lunch 5 & under - \$5

**FAMILY FUN PACK - \$64.95**

Includes a Sky Ride and lunch for 2 adults and 2 juniors

**ZIPRIDER® Restrictions Apply**

All Ages - \$20

**NOTE:** To ride the ZipRider, persons must weigh between 75 and 275 pounds and be at least 52" tall and not more than 80" tall. Wind/weather may at times require increased minimum weight/height requirements for safety and operation.

**DISC GOLF® (rates are per person for 18 holes)**

\$15 includes lift ticket and 3-disc rental set with carrying tote  
\$10 includes lift ticket, and use of your own discs

**Join Us In Pinkham Notch!**

- Sightseeing on New Hampshire's Highest Gondola Skyride with eye level views of Tuckerman Ravine, Mt. Washington and the Presidentials
- Hiking and family picnics (The Appalachian Trail, The Way of the Wildcat Trail to Thompson Brook Falls, and more!)
- MountainSide Deli-style Restaurant/Cafeteria features a delicious summer menu with lunch and picnics made to order for you to enjoy on the deck overlooking the mountain! Beer and wine also available.

**2011/2012 SEASON PASSES**



[BUY NOW](#)



This Institution is operated under special use permit with the White Mountain National Forest and is an equal opportunity employer.





# PHOENIX EXPERIENTIAL DESIGNS



[HOME](#) [ABOUT US](#) [THE TEAM](#) [PICTURES](#) [LINKS](#) [CONTACT US](#)

828-260-7864

*Phoenix Experiential Designs* is committed to providing long-term support and building a lasting relationship with our clients. We know that having someone to turn to for help and support is essential in all aspects of programming and for that matter in life. With over 54 years of dedication and experience in the Challenge course industry, we can help you create the learning and or recreational environment you envision.

Check out the [article \(PDF version\)](#) from High Country Magazine to get a better idea of who we are and what we've done over the years before starting Phoenix Experiential Designs. We can't thank Ken and Sally enough for their in depth portrayal of our slice of the challenge course and canopy access history.

Please give us a call or drop us an email.

Phoenix Experiential Designs

P. O. Box 396

Sugar Grove, NC 28679

Alan Frye  
828-773-4024 c  
[afrye@skybest.com](mailto:afrye@skybest.com)

Robbie Oates  
828-773-3908 c  
[oates@skybest.com](mailto:oates@skybest.com)

Tom Zartman  
828-260-7864 c  
[tomzartman@gmail.com](mailto:tomzartman@gmail.com)

# PHOENIX EXPERIENTIAL DESIGNS



[HOME](#) [ABOUT US](#) [THE TEAM](#) [PICTURES](#) [LINKS](#) [CONTACT US](#)

828-260-7864

**Tom Zartman** found his way into the Challenge Course Industry over an extended period of time. Graduating from Va Tech in 1975 in Outdoor Recreation he went to work with adjudicated youth at Paradise School for Boys in Pennsylvania. After two years he was invited to apply for the Extension Director position at the York YMCA in south central Pennsylvania. In 1977 he embarked on an Outward Bound course at the North Carolina Outward Bound School (NCOBS) in Morganton, NC. The experience was incredibly impactful and his quest to pursue experiential education began. In 1981 Tom took a position with the North Carolina Outward Bound School as an Assistant Instructor and then moved to a full time position managing the whitewater program and the winter program in the Florida Everglades.



Then in 1989 Tom began working for Mike Fischesser as Mike developed Alpine Towers Inc. As the company grew Tom moved into the office as Operations Manager and helped with the transition of the company in 1999 to Alpine Towers Int'l Inc. For the next 10 years he continued as President/Operations Manager until the announcement of a new company Phoenix Expeniential Designs LLC.

Tom sits on the Association for Challenge Course Technology's Installation Standards Committee and the ANSI Task Force.

Tom has been married for 23 years to Kathy Wike and they have two adopted boys Matthew and Daniel. They live in Montezuma NC in a home he built with friends and family.

**Robbie Oates** brings a unique combination of skills, experiences, and professions to the team. He has been working in the challenge course construction field for over 21 years; 19 with Alpine Towers. During this time Robbie has built courses in most of the US including Alaska and Hawaii.



Robbie's earlier professional background as an arborist, stonemason, landscaper, and outdoor educator, helped create a blend of skills and attitudes that suited his development and perspective as a challenge course builder, trainer, and inspector.

He has served as an on site project manager and foreman since 1994 and the Director of International Operations since 1999. Robbie has extensive international experience building both challenge courses and canopy access systems. He has worked in Indonesia, Ecuador, Peru, India, Tahiti, Mexico, Belize, Bermuda, Costa Rica, Nicaragua, Germany, Israel, Canada, and Panama.

Robbie has also designed, built, and implemented extreme events and challenges for several TV shows, including MTV's "Road Rules", Animal Planet's "King of the Jungle" and NBC's "Endurance"

Robbie lives in an intentional neighborhood in the Blue Ridge Mountains with his wife of 29 years, Laurie Percival-Oates. They have two children; Jesse - 27 and Austin - 26. Both Jesse and Austin have traveled and worked with their dad since they were in their early teens.

**Alan Frye** graduated from Appalachian State University in 1983. He received a bachelor's degree in science with a minor in mathematics.

He has spent 25 years in the home building and remodeling industry. This experience has developed a wide set of skills that range from framing, cabinetry, and constructing elaborate staircases, to timber framing, home design, and site management.



Alan has 15 years experience in the ropes course construction business. He has been the foreman and site manager for 95 ropes course projects that are spread over 40 states.

Additional experience includes designing, engineering, and erecting stair towers that are used for access to bridges in the forest canopy. The towers range from 75 to 90 feet and are located in Florida, Peru, and Indonesia.

# PHOENIX EXPERIENTIAL DESIGNS



[HOME](#) [ABOUT US](#) [THE TEAM](#) [PICTURES](#) [LINKS](#) [CONTACT US](#)

828-260-7864

Phoenix Experiential Designs is a full service, state of the art company, offering creative designs and challenge course management services through our:

### Phoenix Aerial Designs Series

- Aerial Teams Course™
- Family ReCreate Course™
- Environmental Exploration Designs
- Aerial Adventures and Zip Lines
- Extreme Events

### Phoenix Challenge Course Management Service

- Facilitation Training
- Practitioner Training
- Structural Inspections
- Program Reviews
- Practitioner Certification

