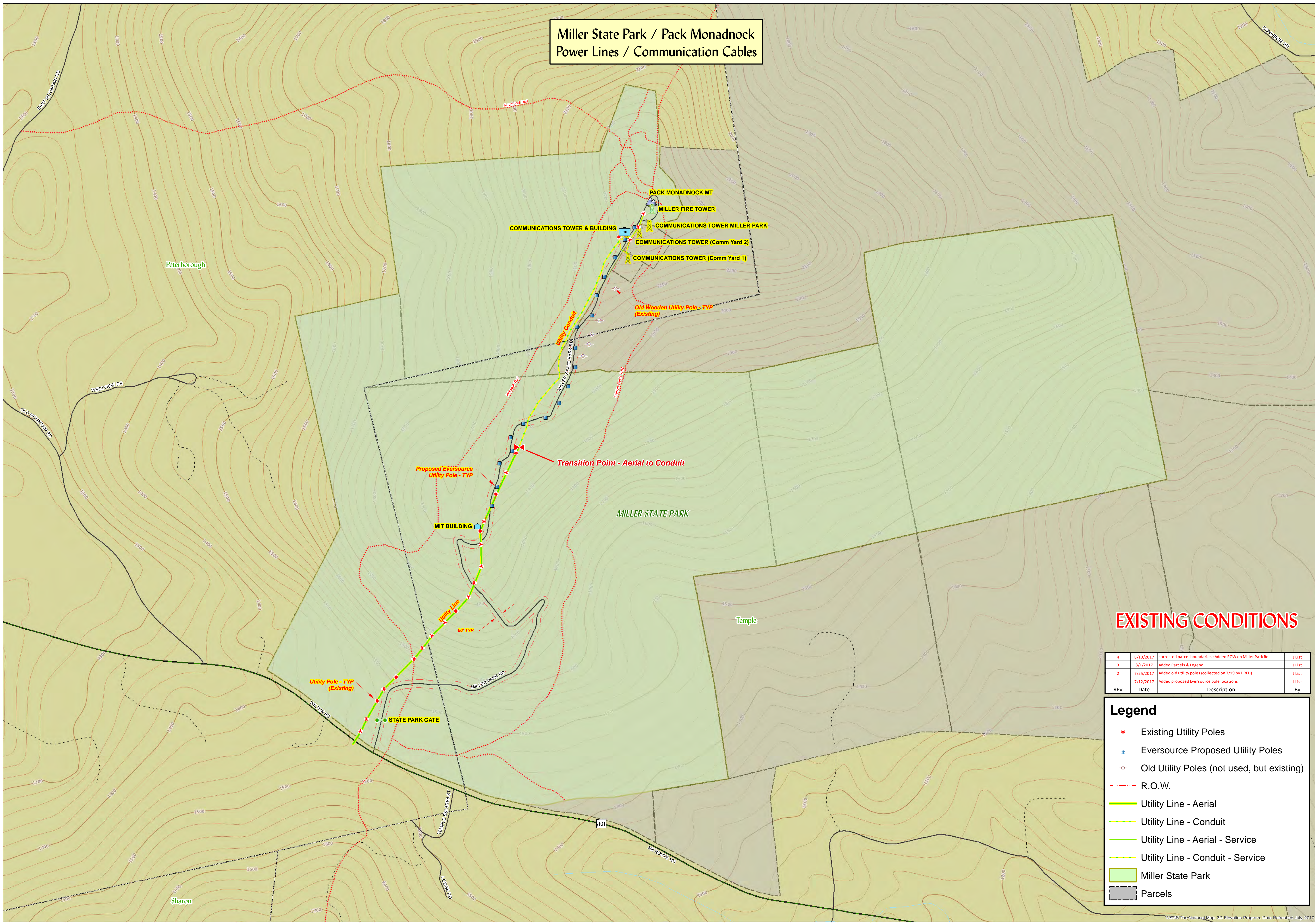


Miller State Park / Pack Monadnock Power Lines / Communication Cables



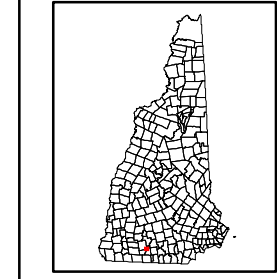
EXISTING CONDITIONS

REV	Date	Description	By
4	8/10/2017	corrected parcel boundaries ; Added ROW on Miller Park Rd	J List
3	8/1/2017	Added Parcels & Legend	J List
2	7/25/2017	Added old utility poles (collected on 7/19 by DRED)	J List
1	7/12/2017	Added proposed Eversource pole locations	J List

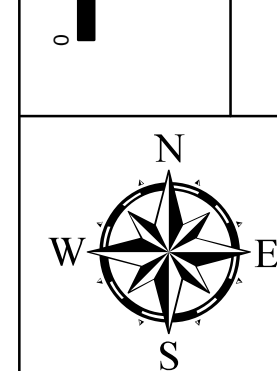
Legend

- Existing Utility Poles
- Eversource Proposed Utility Poles
- Old Utility Poles (not used, but existing)
- R.O.W.
- Utility Line - Aerial
- Utility Line - Conduit
- Utility Line - Aerial - Service
- Utility Line - Conduit - Service
- Miller State Park
- Parcels

NOTES:
 1. Vermont data was obtained from the Vermont Center for Geographic Information
 2. Massachusetts data was obtained from the Office of Geographic Information and Mapping
 3. New Hampshire data was obtained from the New Hampshire Office of Geographic Information and Mapping
 4. This map is for informational purposes only. It does not constitute a warranty of any kind. The user assumes all liability for any use of this map.



Scale: 1 inch = 333 feet
 Scale = 1:4000
 Projected Coordinate System: NAD 1983 StatePlane NH FIPS 2800 Feet
 Datum: NAD 1983



Symbol	Description
—	Water Feature
—	Park/Forest
—	Railroad
---	Abandoned Railroad
---	Trail
●	EMT
●	Mile Marker
●	2 1/2 Mile Marker
●	Gate
—	Interstate
—	US Route
—	Public Road
—	Driveway/Private
—	Ramp/Crossover
—	County Boundary
—	State Boundary
—	Stream

Miller State Park / Pack Monadnock Power Lines / Communications Cables

Prepared By:
 NH Public Utilities Commission
 Safety Division
 GIS Section
 March 9, 2017

FOR OFFICIAL USE ONLY