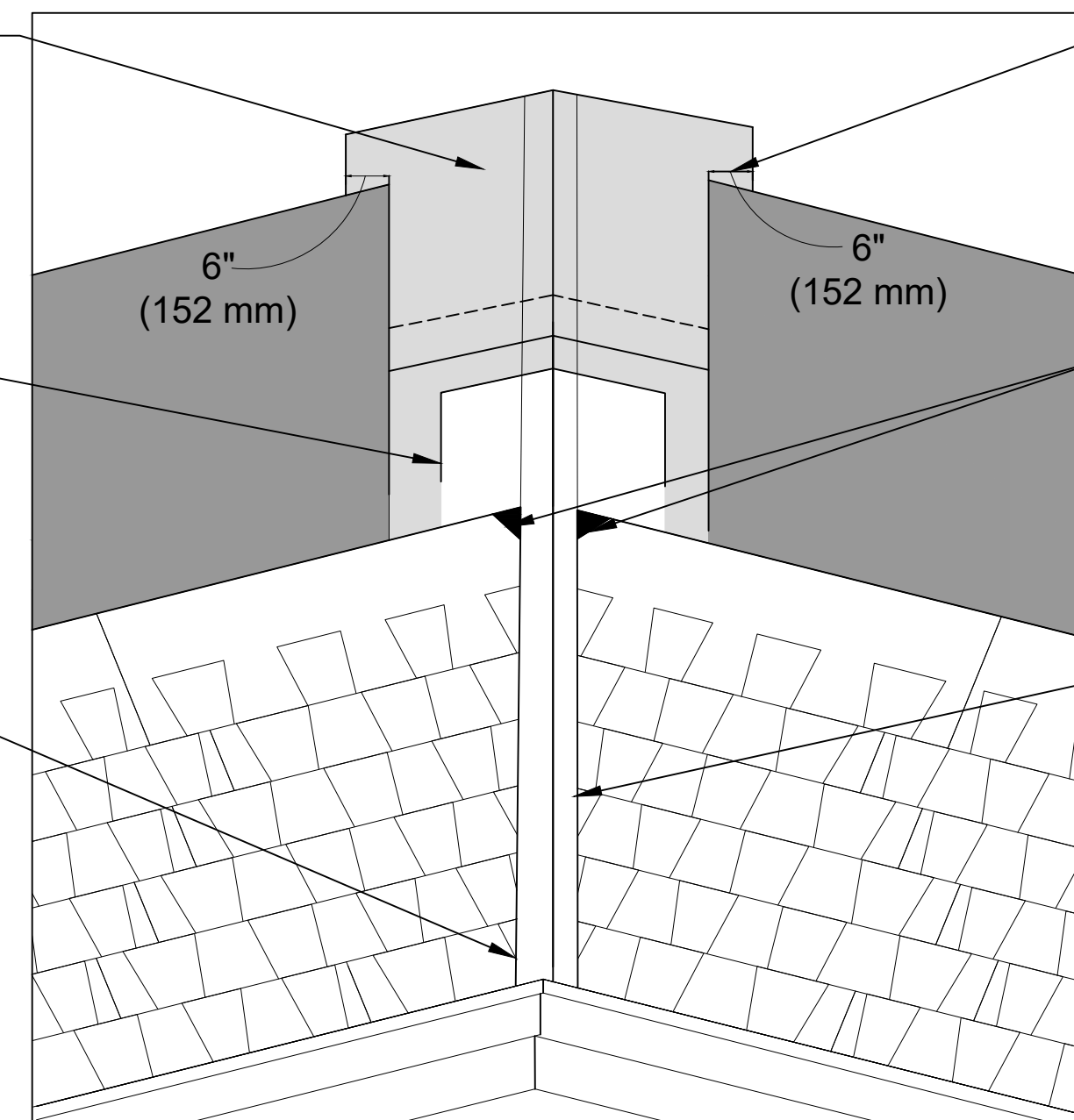


CENTER FULL WIDTH ROLL 3/8" OF HI-TEMP ICE & WATERSHIELD. DO NOT PLACE FASTENERS WITHIN 6" OF THE CENTER LINE OF THE VALLEY. HORIZONTAL LAPS 6" MINIMUM.

CENTER 30" WIDE 20 OZ. COPPER W PROFILE VALLEY, OVERLAP HORIZONTAL LAPS A MINIMUM 12" AND SEAL BY EMBEDDING THEM IN ASPHALT PLASTIC CEMENT.

SHINGLES SHOULD BE SEPERATED 6" AT TOP OF VALLEY. SEPERATION MUST INCREASE 1/8" PER FOOT TOWARDS EAVES TO HANDLE INCREASING WATER VOLUME. SNAP CHALK LINES TO ENSURE SHINGLES DIVERGE PROPERLY IN VALLEY.



CARRY UNDERLAYMENT AT LEAST 6" OVER HIGH-TEMP ICE & WATERSHIELD.

CLIP THE TOP CORNERS OF SHINGLES 45 DEGREES TO KEEP WATER FLOW TOWARD THE VALLEY CENTER.

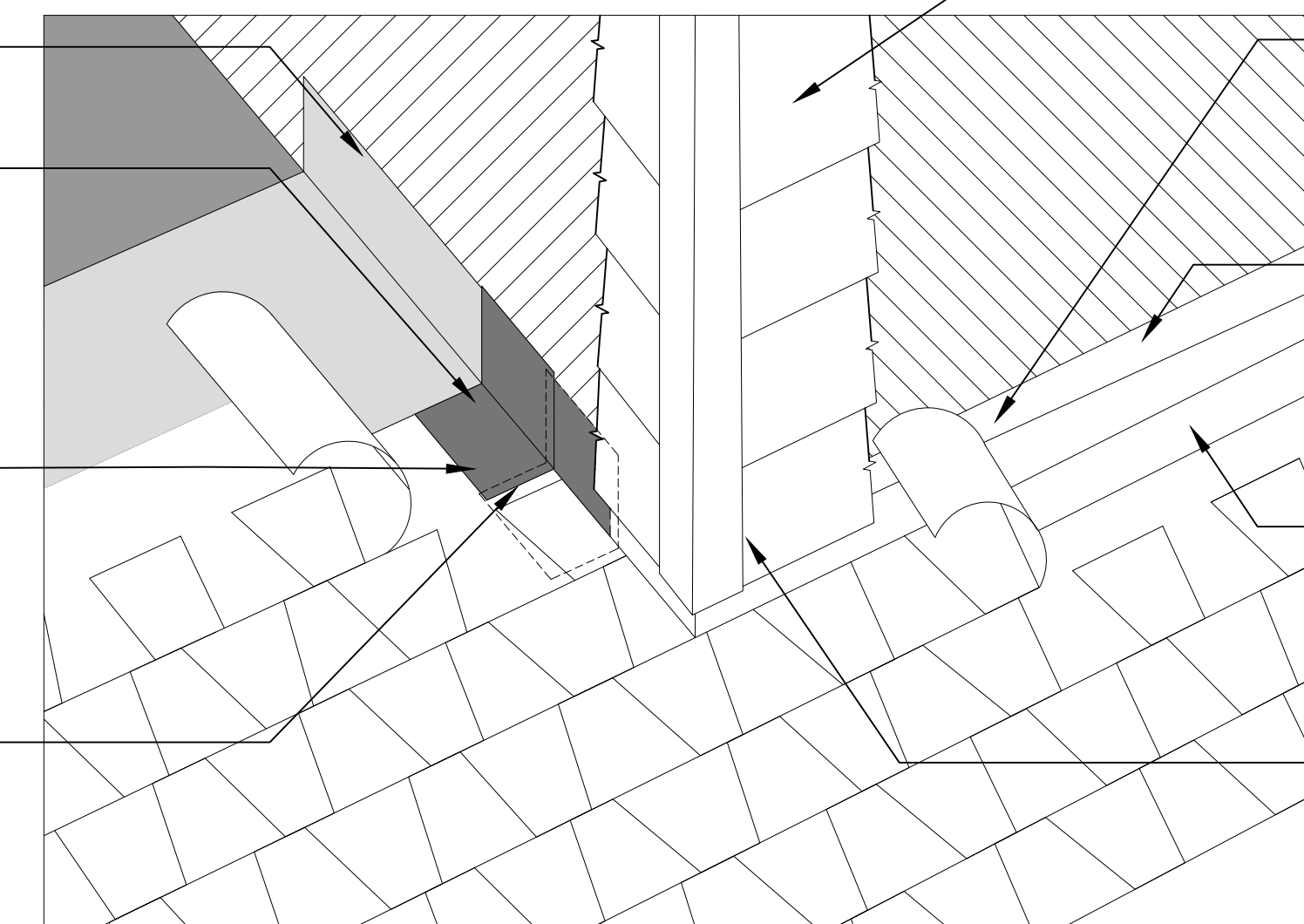
OVERLAP SHINGLES AT LEAST 4" OVER 30" WIDE COPPER VALLEY. EMBED THE SHINGLE ENDS IN ASPHALT PLASTIC CEMENT TO SEAL THE SHINGLES TO THE METAL AND KEEP WATER FROM RUNNING UNDER THEM.

1 COPPER VALLEY DETAIL  
4 NOT TO SCALE

EXTEND ICE & WATERSHIELD AT LEAST 5" UP WALL  
2 COPPER NAILS PER STEP FLASHING

PLACE COPPER STEP FLASHING JUST UP SLOPE FROM EXPOSED EDGE OF SHINGLE AND EXTEND 5" OVER UNDERLYING SHINGLE AND 5" UP THE VERTICAL WALL.

STEP FLASHING PIECES OVERLAP EACH OTHER 2"



REPLACE WOOD SHAKE SIDING AS REQUIRED.

COVER COPPER STEP FLASHING WITH CUT SHINGLE. DO NOT NAIL SHINGLE. INSTALL SHINGLE WITH ASPHALTIC PLASTIC CEMENT

EXTEND ICE & WATERSHIELD AT LEAST 5" UP WALL

COPPER FLASHING (NAILED TO THE DECK, NOT THE VERTICAL WALL) EXTEND UP WALL AT LEAST 5"

SIDING/GLADDING MUST BE AT LEAST 2" ABOVE THE ROOF SURFACE AND COVERING FLASHING AT LEAST 2"

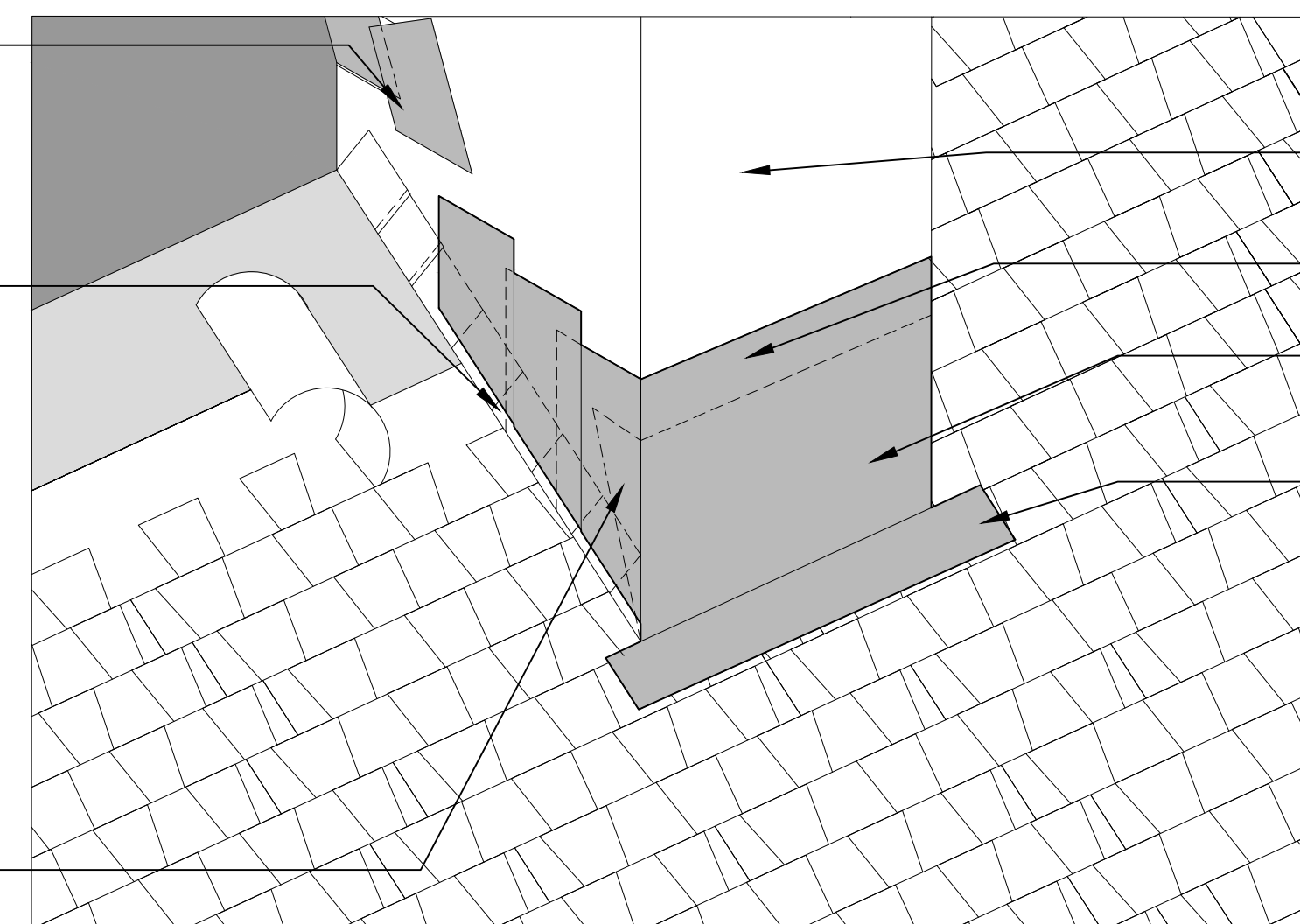
2 SIDEWALL FLASHING DETAIL (TYPICAL)  
4 NOT TO SCALE

EXTEND LEAD COUNTER FLASHING OVER BASE FLASHING.

USE ONE PIECE LEAD STEP FLASHING FOR EACH SHINGLE COURSE. PLACE STEP FLASHING OVER THE SHINGLE AND NAIL EACH STEP FLASHING PIECE TO THE ROOF DECK WITH 2 COPPER NAILS. SEAL THE OVERLYING ASPHALT SHINGLES TO THE STEP FLASHING WITH ASPHALT PLASTIC CEMENT.

DO NOT SAW CUT THE STONES FOR THE LEAD COUNTER FLASHING INSTALLATION. REUSE THE THE EXISTING COUNTER FLASHING LOCATIONS.

WRAP CORNERS OF LEAD BASE FLASHING AT LEAST 3"



STONE MASONRY CHIMNEY DETAIL INTENTIONALLY NOT SHOWN. RE-POINT THE STONE MASONRY CHIMNEY FROM THE ROOFLINE UP.

EXTEND LEAD COUNTER FLASHING OVER BASE FLASHING.

LEAD BASE FLASHING EXTEND AT LEAST 12" UP THE FACE OF THE CHIMNEY'S

LEAD BASE FLASHING EXTEND AT LEAST 5" ONTO ROOF DECK

DO NOT RUN ICE AND WATERSHIELD OR OTHER OR UNDERLAYMENT UP THE FACE, SIDEWALLS, OR BACK OF CHIMNEYS

3 CHIMNEY FLASHING DETAIL  
4 NOT TO SCALE

**SHINGLE INSTALLATION**

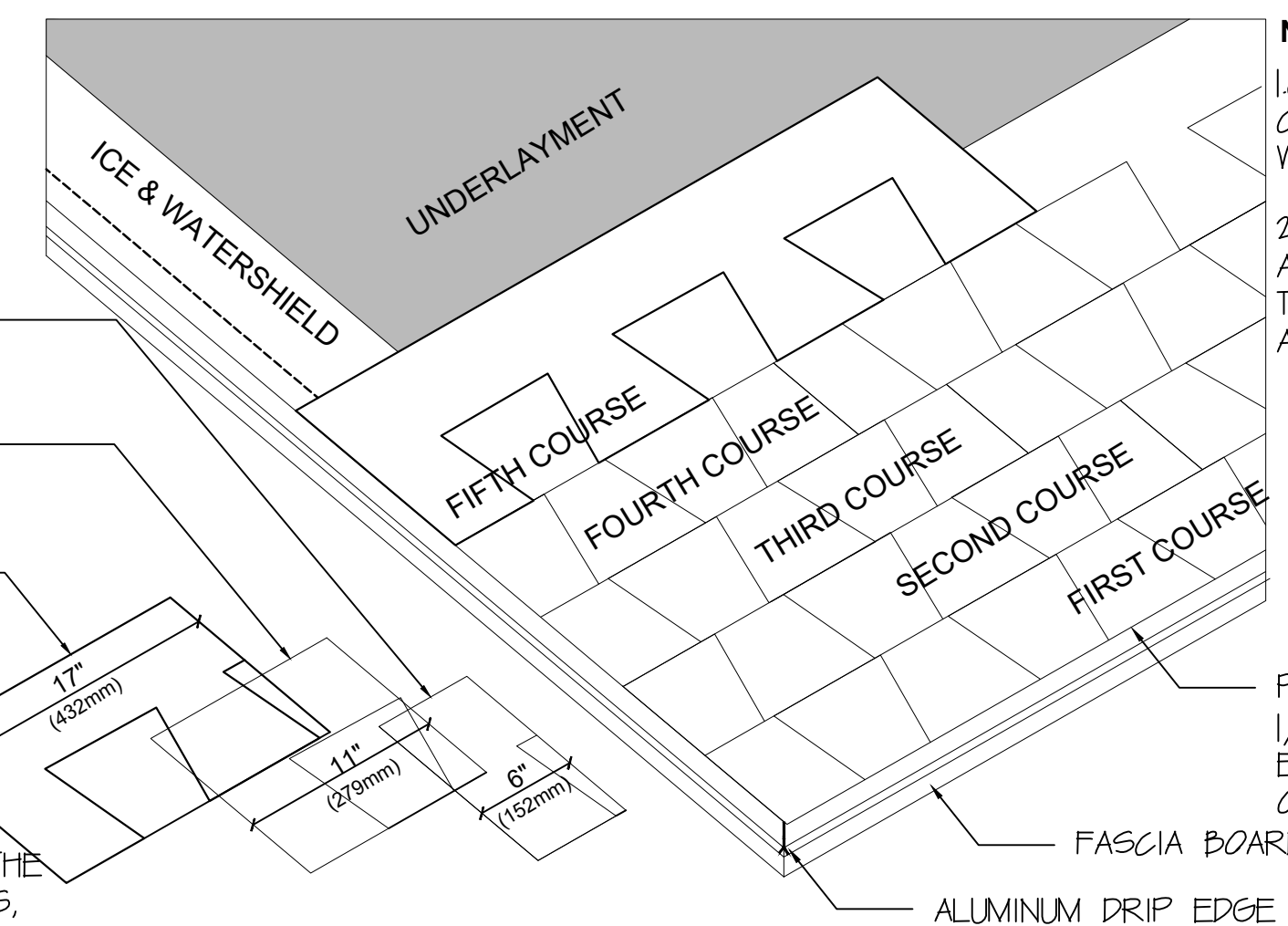
START AT EITHER RAKE AND LAY IN EITHER DIRECTION  
FIRST COURSE:  
START WITH FULL SHINGLE

SECOND COURSE:  
TRIM 6" (152MM) OFF FIRST SHINGLE

THIRD COURSE:  
TRIM 11" (279MM) OFF FIRST SHINGLE

FOURTH COURSE:  
TRIM 17" (432MM) OFF FIRST SHINGLE

REPEAT THE 1ST - 4TH COURSE SHINGLE REMAINING INSTRUCTIONS ON THE REMAINING COURSES, STARTING THE FIFTH COURSE WITH A FULL SHINGLE.



**NOTES:**

1. CONTINUE EACH COURSE WITH WHOLE SHINGLES.
2. STRIKE A CHALK LINE ABOUT EVERY 6 COURSES TO CHECK PARALLEL ALIGNMENT WITH EAVES.

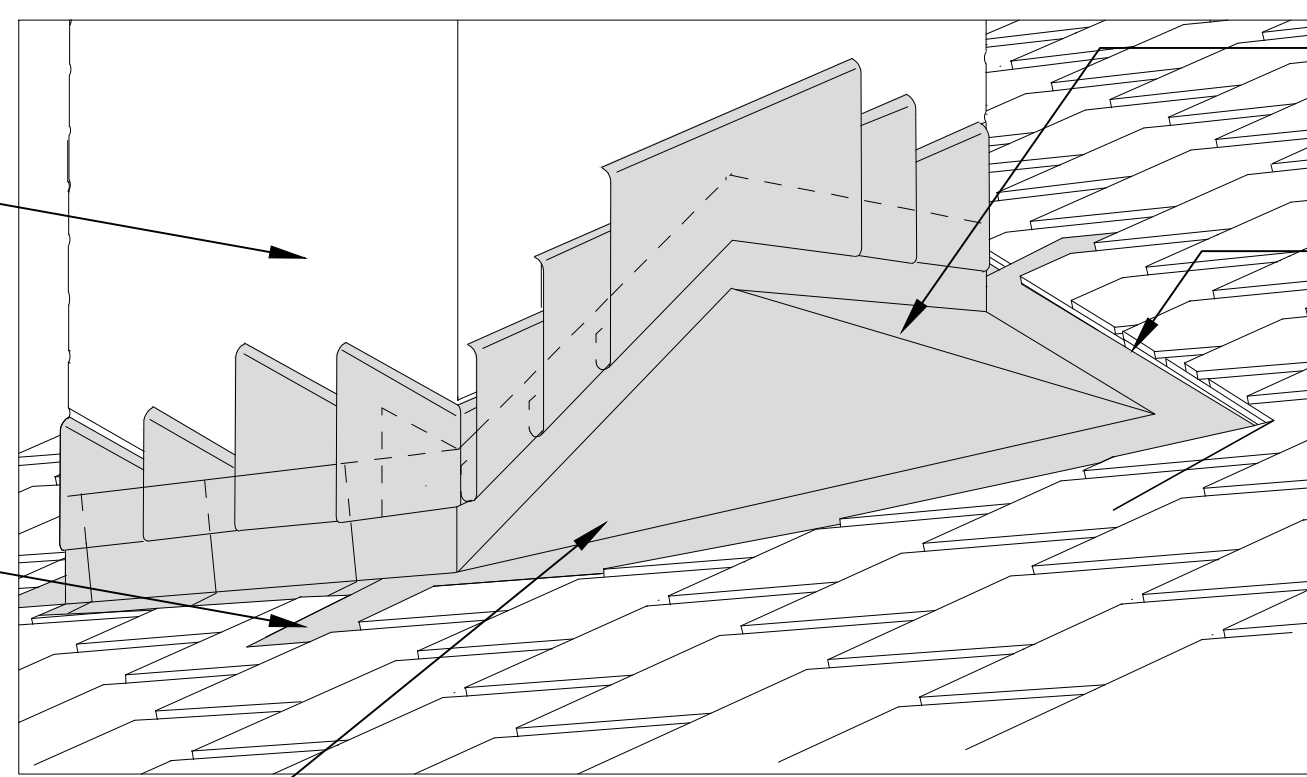
PLACE FIRST COURSE OF SHINGLES 1/4" - 3/4" OVER EAVE AND RAKE EDGES, COVERING STARTER COURSE OVERHANG, TO PROVIDE DRIP EDGE.

4 SHINGLE INSTALLATION DETAILS  
4 NOT TO SCALE

STONE MASONRY CHIMNEY DETAIL NOT SHOWN INTENTIONALLY

SEAL SHINGLES TO METAL FLANGE WITH ASPHALT PLASTIC CEMENT.

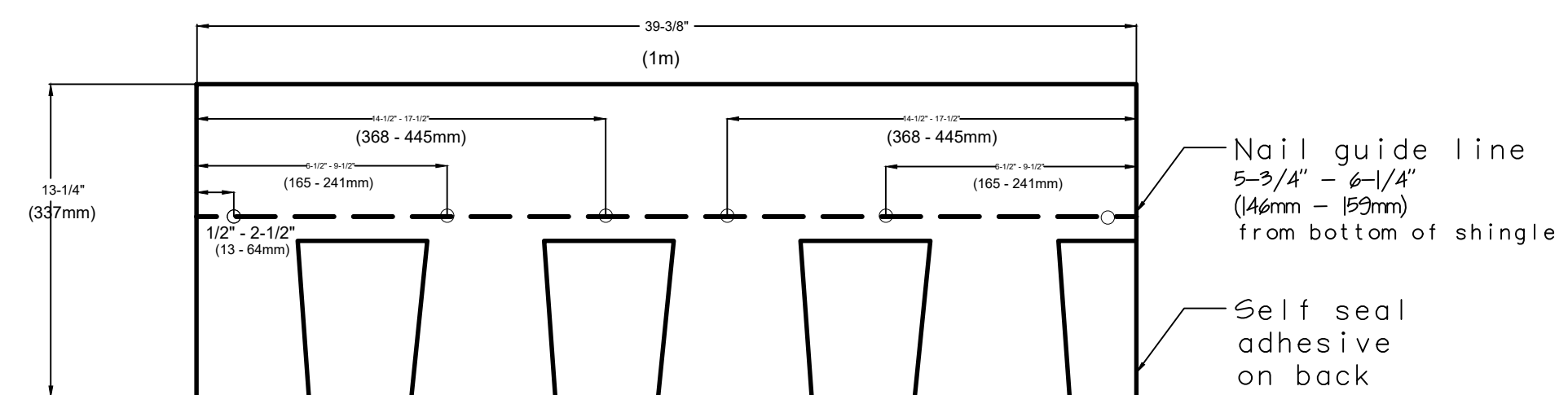
CRICKETS SHOULD EXTEND AT LEAST 6" UP THE BACK OF THE CHIMNEY AND EXTEND AT LEAST 12" UP THE ROOF DECK.



CRICKET RIDGE SHOULD BE AT LEAST 12"

CRICKET FLANGE SHOULD BE AT LEAST 18" UP ROOF DECK.

5 20 OZ COPPER CRICKET FLASHING DETAIL  
4 NOT TO SCALE



**ENHANCED NAILING PATTERN - six nails per shingle\***

\* required by some local codes and required for enhanced wind coverage on certain products. See limited warranty for details.

6 SHINGLE NAILING PATTERN  
4 NOT TO SCALE

- NOTES:
1. REMOVE EXISTING METAL ROOF PANELS.
  2. INSTALL NEW MBCI 7.2 PANELS 22 GAUGE IN ACCORDANCE TO MANUFACTURER'S INSTRUCTIONS FOR HIGH WIND AREAS.
  3. INSPECT EPDM ROOFING, REPAIR OR REPLACE AS REQUIRED.
  4. REMOVE EXISTING ASPHALT SHINGLE ROOFING.
  5. INSTALL NEW ASPHALT SHINGLE ROOFING IN ACCORDANCE WITH MANUFACTURER'S INSTRUCTIONS FOR HIGH WIND AREAS.

METAL & ASPHALT SHINGLE ROOFING REPLACEMENT  
CANNON MTN. AERIAL TRAMWAY SUMMIT BUILDING

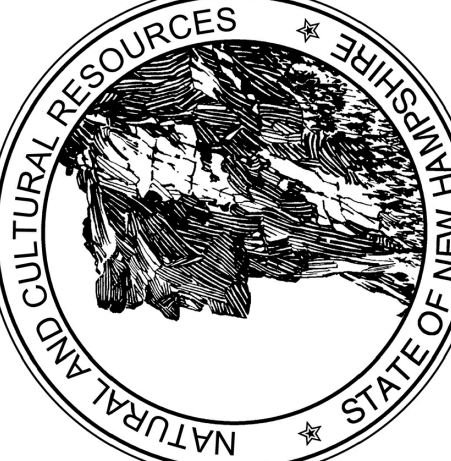
DATE: OCT 15, 2021

PROJECT # CAP-2139

SCALE 1/8" = 1'-0"

APPROVED BY: EDWARD MUSSEY

DRAWN BY: EDWARD MUSSEY



STATE OF NEW HAMPSHIRE  
DEPARTMENT OF NATURAL AND CULTURAL RESOURCES  
OPERATIONS PLANNING & PROJECT MANAGEMENT  
FRANCONIA NOTCH STATE PARK  
FRANCONIA, NEW HAMPSHIRE