

# PREFERRED CONCEPT

NUMBER OF SITES -  
DRY RIVER: 32  
EXPANSION AREA: 85  
TOTAL NUMBER OF SITES: 117

## 1. DRY RIVER EXPANSION AREA

- > Centrally located office and common space with 3 camping pods made up of standard, improved, and shelter sites
- > Road network is designed to minimize vehicular traffic within campground pods and promote bike/pedestrian safety

## 2. DRY RIVER CAMPGROUND

- > The existing campground will undergo needed improvements and receive additional amenities

## 3. MULTI-USE PATH

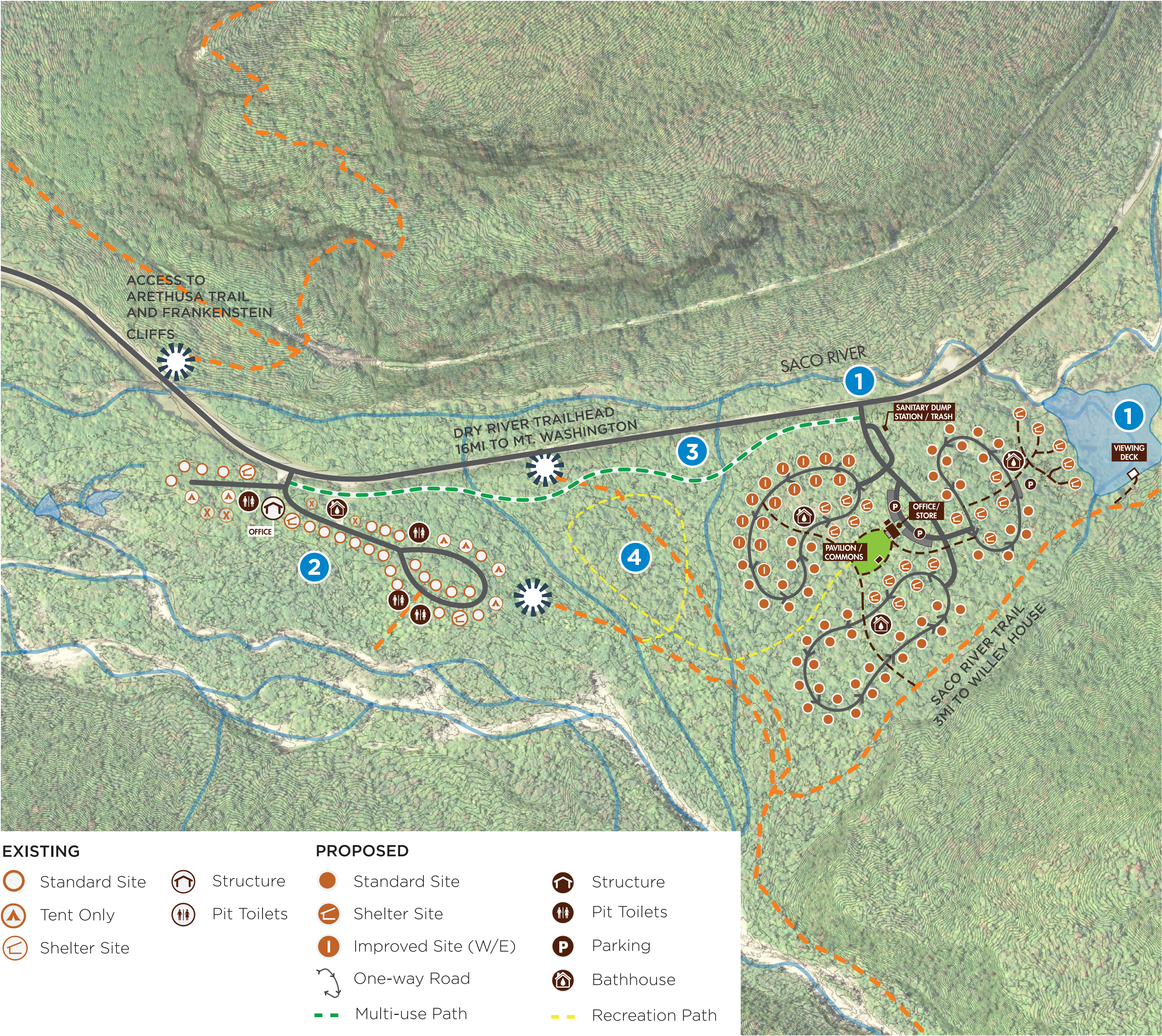
- > A paved multi-use path will create a bike/ped connection between Dry River and the Expansion area
- > This will be the first section of the Crawford Notch Recreation path

## 4. RECREATION TRAIL

- > A recreation trail will be located between Dry River Campground and the Expansion Area creating an informal play space for kids and adults, as well as opportunities for interpretive walks and education

## 5. VIEWING DECK

- > A viewing deck with panoramic views of the White Mountains will be an amenity for all campers





# PREFERRED CONCEPT EXPANSION AREA

## 1. CAMPING POD 1 - 30 SITES

- > 1 Bathhouse
- > 15 Improved sites with water and electricity
- > 5 Shelter Sites
- > 10 Standard Sites

## 2. CAMPING POD 2 - 30 SITES

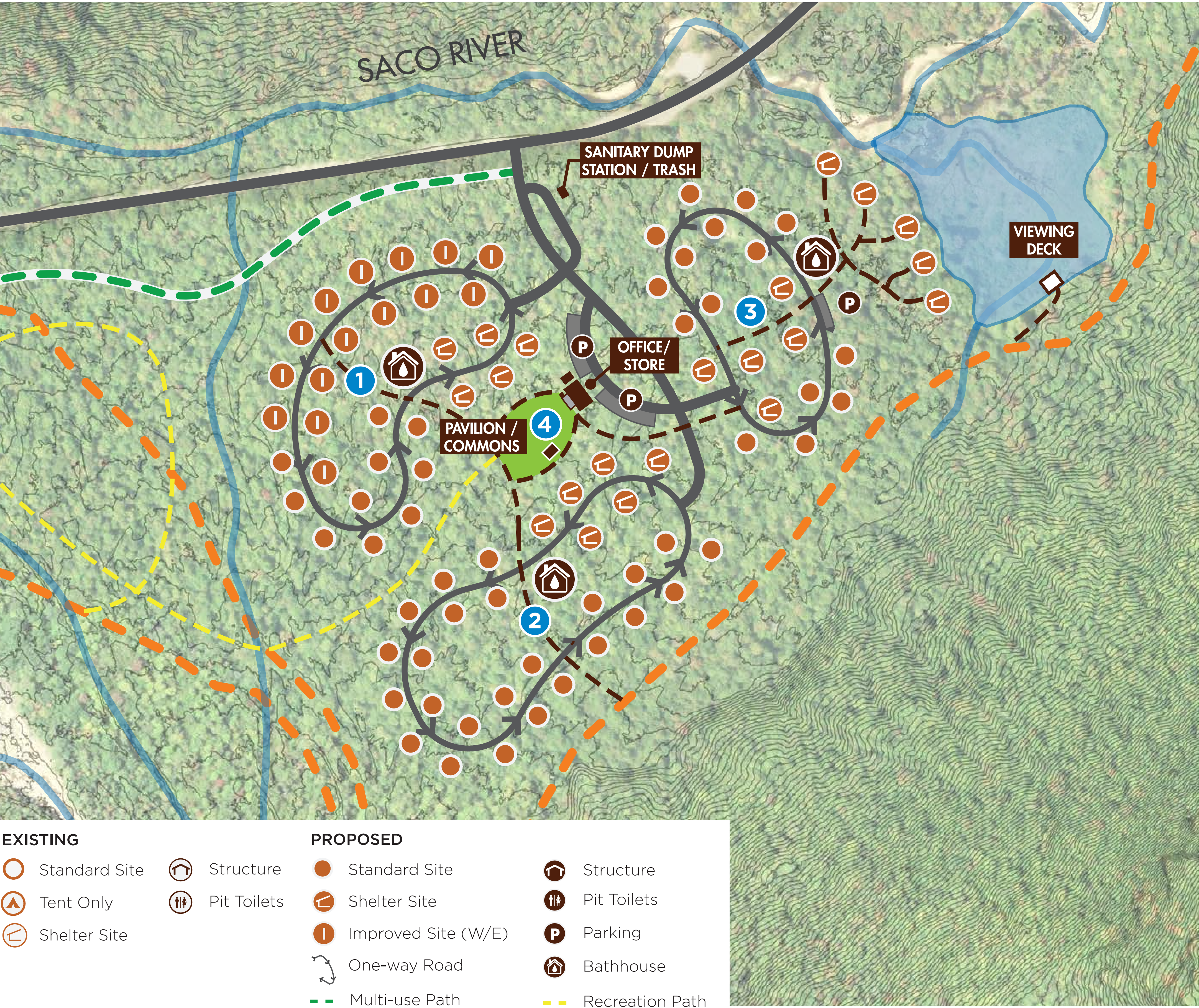
- > 1 Bathhouse
- > 6 Shelter Sites
- > 24 Standard Sites

## 3. CAMPING POD 3 - 25 SITES

- > 1 Bathhouse
- > 10 Shelter Sites (5 walk-in)
- > 15 Standard Sites

## 3. CAMPGROUND CORE

- > The office core is located at the center of the park at a common area, which includes a shade pavilion and natural play area
- > The office and store will serve the Expansion Area and Dry River Campground





# PREFERRED CONCEPT DRY RIVER

EXISTING SITES: 36  
REMOVED SITES: 4  
TOTAL NUMBER OF SITES: 32

## 1. REMOVE UNDERUTILIZED SITES

- > 4 sites have been removed that have very low utilization rates

## 2. RENOVATE BATHHOUSE AND PIT TOILETS

- > The bathhouse will be renovated and a dish washing station will be added on
- > New Pit Toilets

## 3. CAMPGROUND ROAD AND SITE REPAIRS

- > The campground road and campsites will be repaired and improved where needed

