

# Terrill Pond Dam-October, 2014



# Terrill Pond

- NHFG created pond
- 20 acres
- shallow (max depth 8')

## Management

- ❖ Trout Pond-4<sup>th</sup> Saturday in April
- ❖ Fly Fishing Only
- ❖ Popular spot for local anglers
- ❖ Stocked with brook trout from Berlin Hatchery



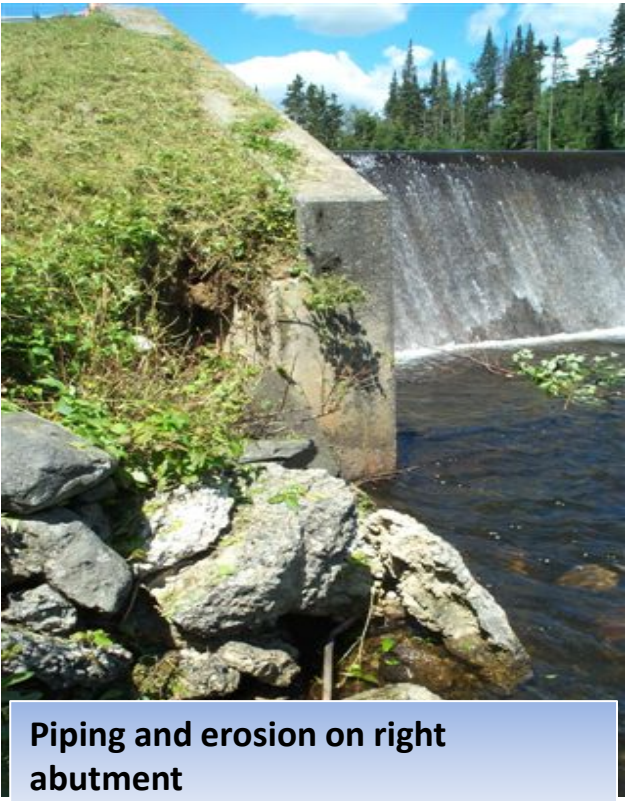
Terrill Pond-from the boat launch

# Dam Safety Deficiencies found in 2009 during a routine inspection

- Dams are typically inspected every 5 years
- Latest scheduled inspection was in 2016

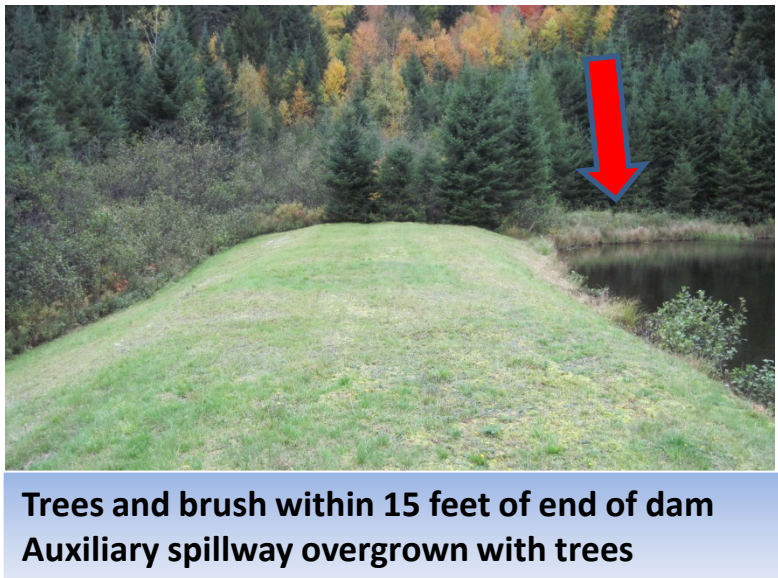


# Dam Safety Deficiencies



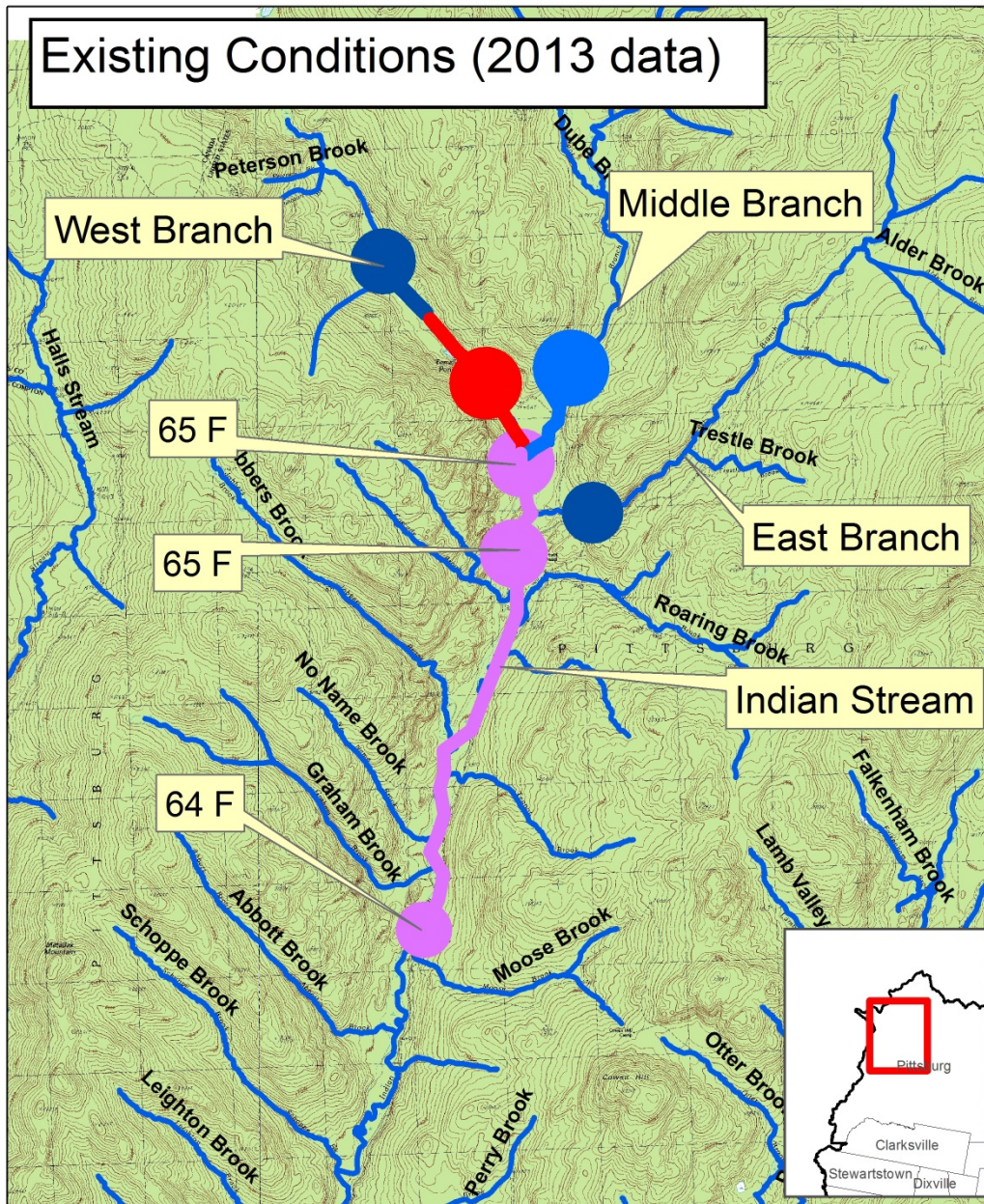


# More Deficiencies





# Existing Conditions (2013 data)



- Red area surpasses 70 F° = Low trout catch rates
- Pink area = lowered trout abundance

0 0.5 1 2 Miles



# Water Temperature



Crawdads big enough to eat!

## Thermal impairment

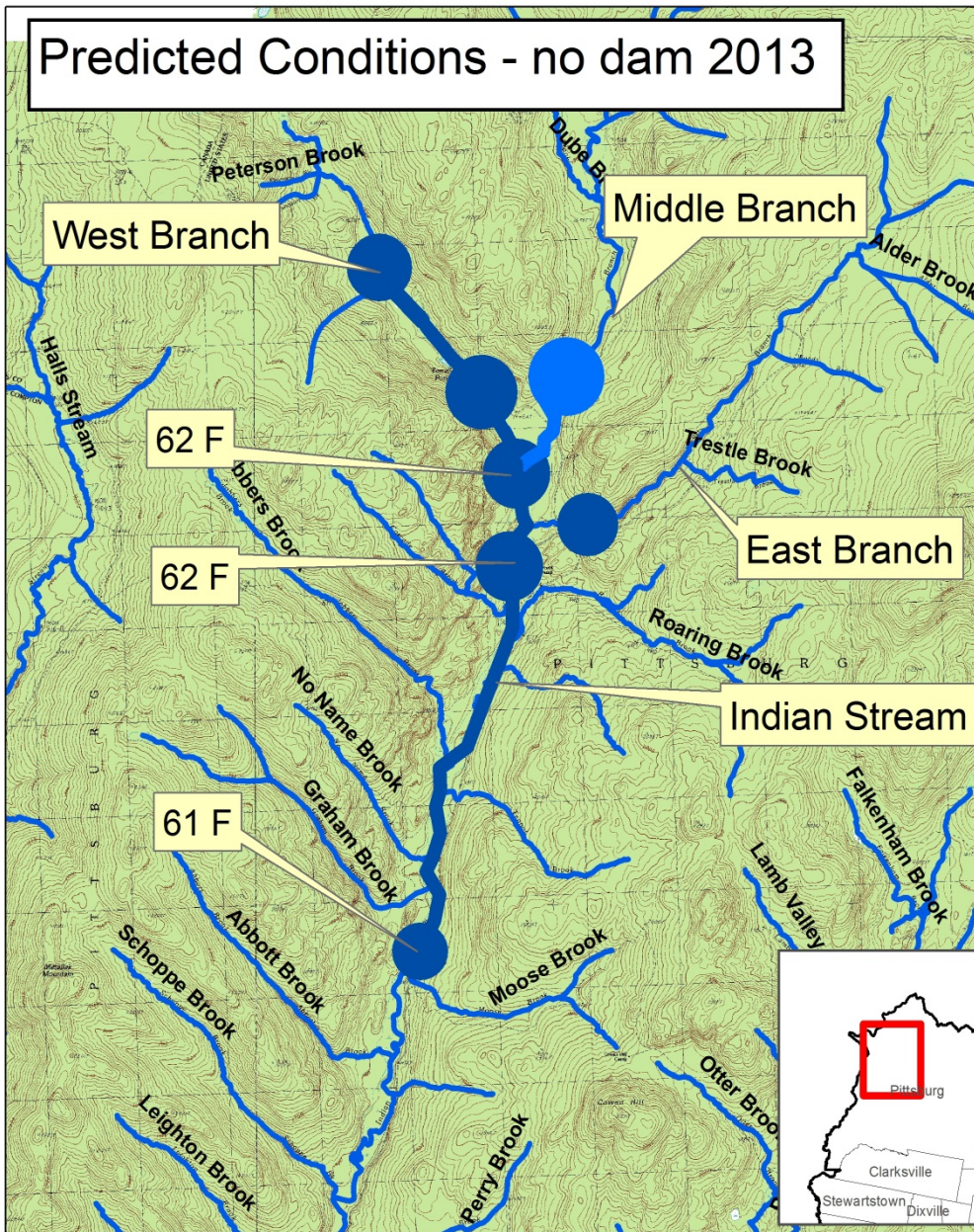
- Greater than 72F° lethal to juvenile brook trout
- Long exposure times > 75F lethal to all age classes of brook trout

Year	Outlet	Inlet
2014	79.5	66.5
2013	81.3	69.8
2012	81.4*	73.1
2011	81.4**	-
2010	83.7	-

\*2012-Aug 4 \*\*2011-Jul 22



# Predicted Conditions - no dam 2013



- Temperature Model without dam
- Blue indicates favorable water temperatures for trout



# Options?

- Repair dam?

- Seasonal stocked trout fishery
- Annual dam registration fees, maintenance
- Historical value

- Remove dam?

- Improve coldwater fisheries habitat and restore aquatic connectivity
- Alleviate dam fees and maintenance
- May alleviate the need to stock trout

# NHDES Dam Bureau FY22-23 Capitol Budget

**Reconstruction of spillway wall and  
embankments estimate ~\$600,000**

**("rough estimate" no design work has been done yet)**



No estimate to remove the Dam has  
been done yet.