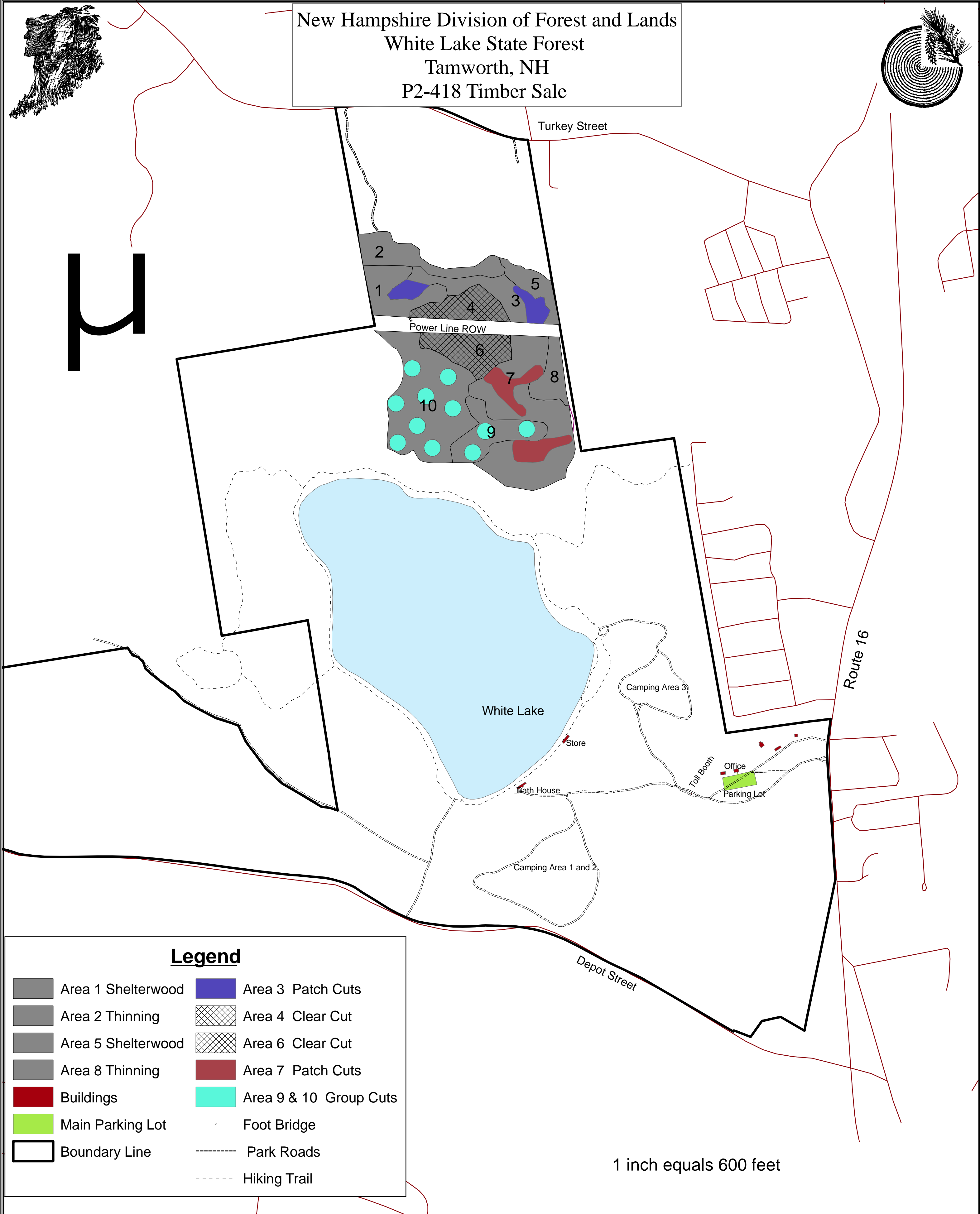


New Hampshire Division of Forest and Lands  
 White Lake State Forest  
 Tamworth, NH  
 P2-418 Timber Sale



Legend	
Area 1 Shelterwood	Area 3 Patch Cuts
Area 2 Thinning	Area 4 Clear Cut
Area 5 Shelterwood	Area 6 Clear Cut
Area 8 Thinning	Area 7 Patch Cuts
Buildings	Area 9 & 10 Group Cuts
Main Parking Lot	Foot Bridge
Boundary Line	Park Roads
	Hiking Trail

SHELTERWOOD is a practice that reduces the density of a forest stand to a level that encourages seedlings and saplings to become established in the stand by encouraging increased seed production in the mature stand and increased light conditions at the ground level

THINNING is a practice which involves reducing the stocking of trees to re-allocate growth from many stems to fewer stems.

CLEAR CUTS are practices where all trees and saplings are removed in areas larger than 5 acre in size.

PATCHES are like a clear cuts but smaller in size ranging between 2 to 5 acres each

GROUPS are the smallest opening (clear cut) they range between 1/4 to 2 acres in size. In this operation they will be 1/2 acre in size.