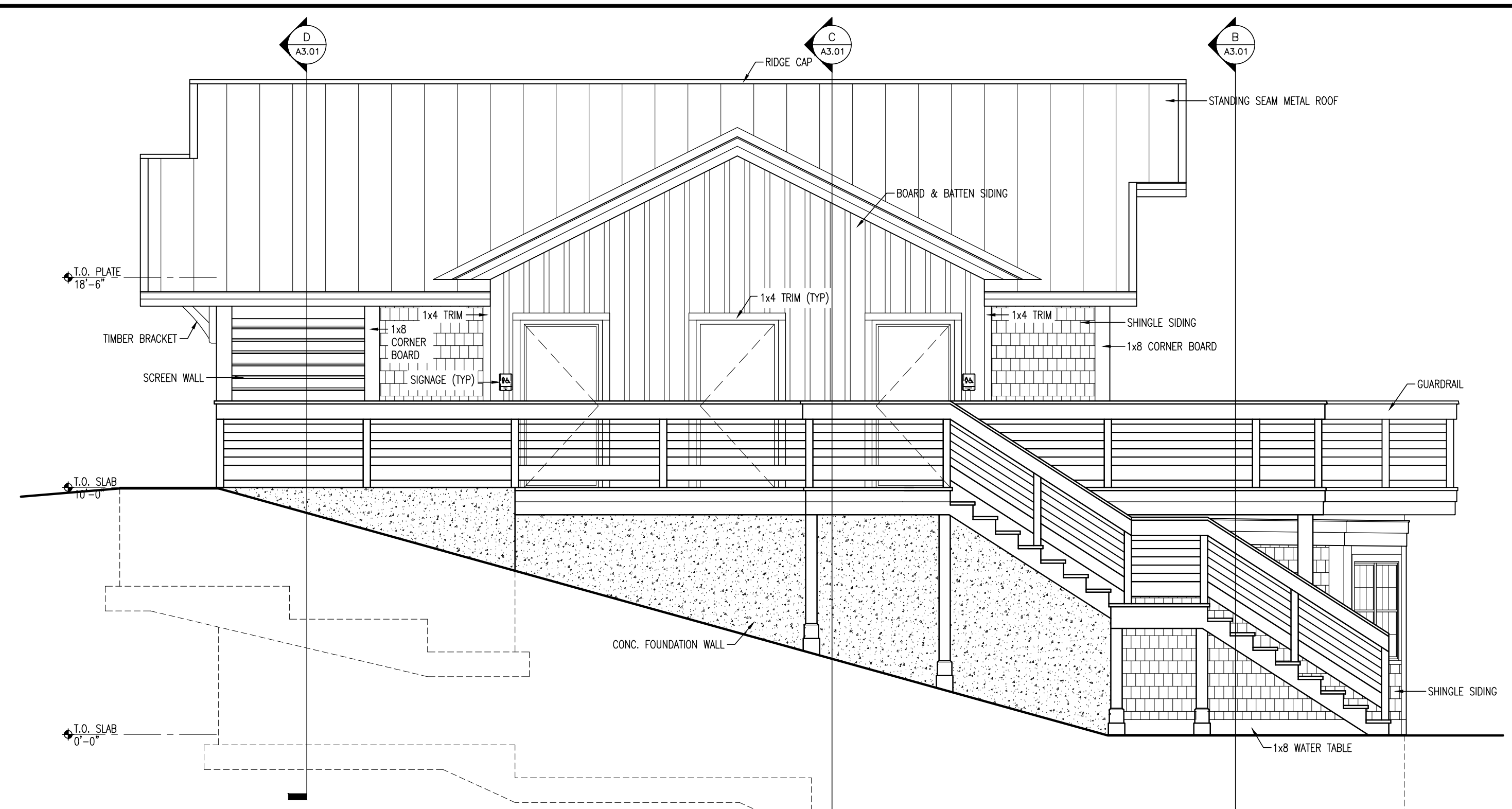


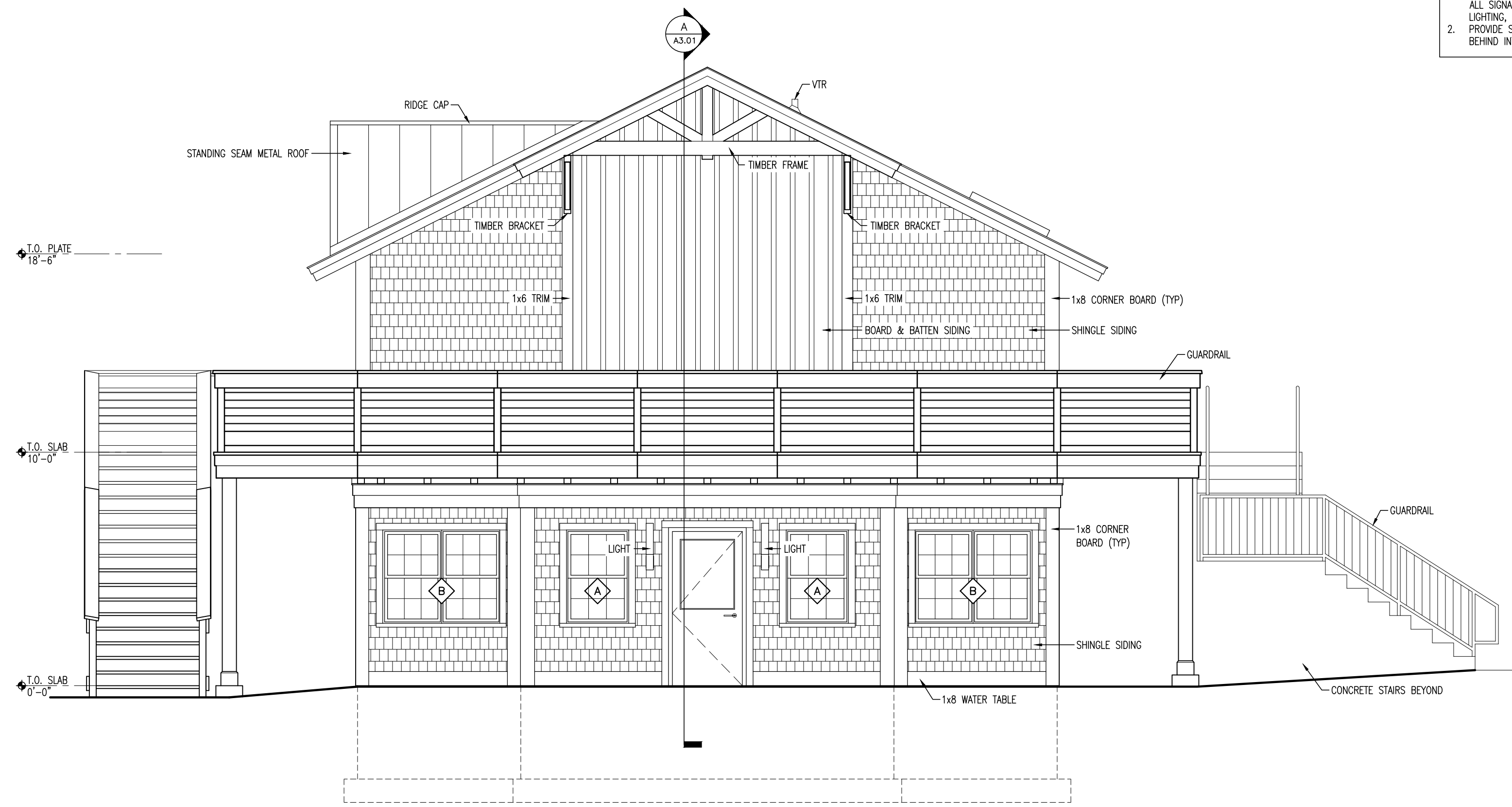
1 SOUTH ELEVATION



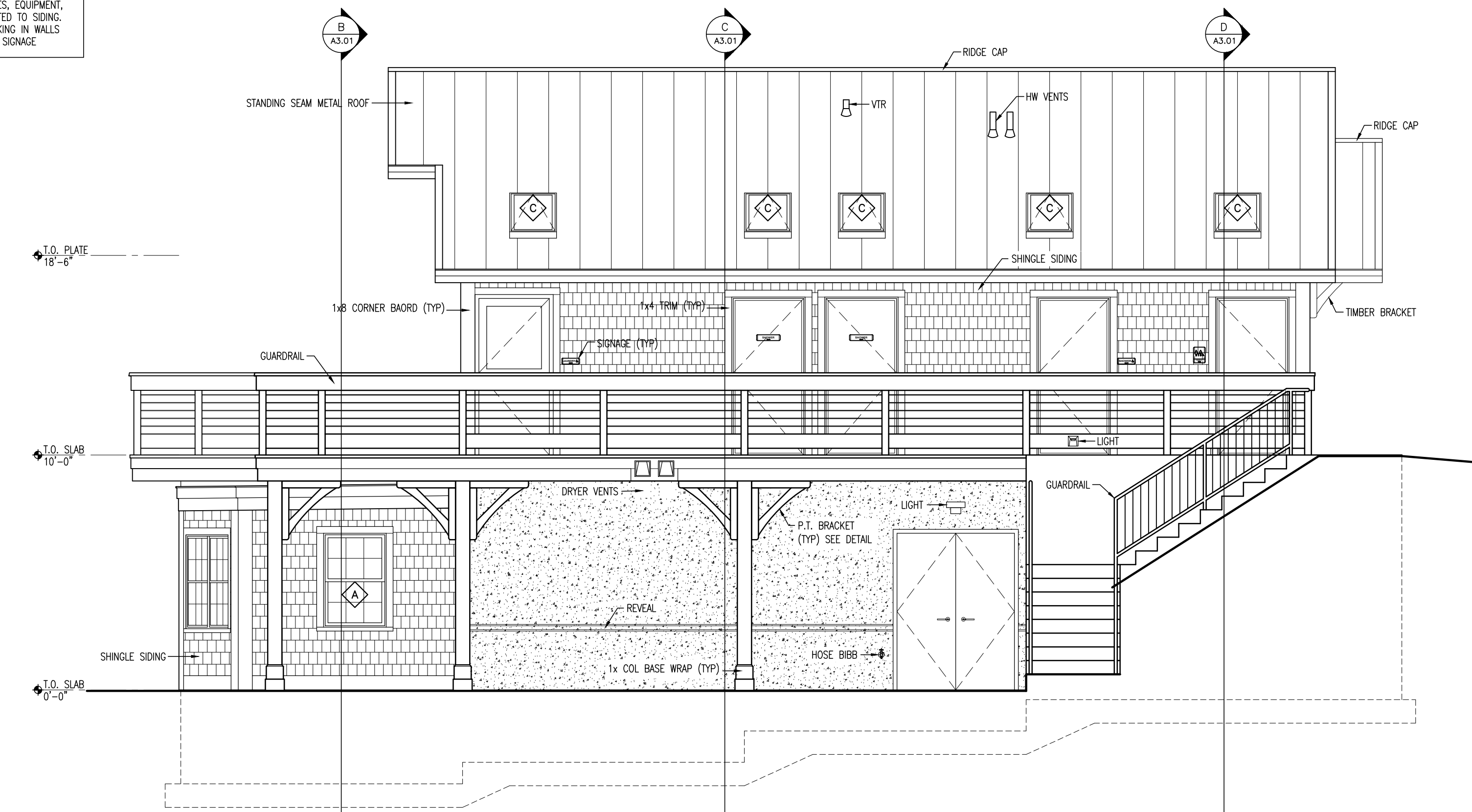
2 EAST ELEVATION

**GENERAL NOTES**

1. PROVIDE SOLID PLINTH BLOCKS BEHIND ALL SIGNAGE, FIXTURES, EQUIPMENT, LIGHTING, ETC. MOUNTED TO SIDING.
2. PROVIDE SOLID BLOCKING IN WALLS BEHIND INTERPRETIVE SIGNAGE.



3 NORTH ELEVATION



4 WEST ELEVATION

90% REVIEW SUBMISSION  
NOT FOR CONSTRUCTION

STATE OF NEW HAMPSHIRE DEPARTMENT OF ADMINISTRATIVE SERVICES DIVISION OF PUBLIC WORKS DESIGN & CONSTRUCTION JOHN O. MORTON BUILDING 7 HAZEN DRIVE BOX 483 ROOM 250 CONCORD, NEW HAMPSHIRE 03302-0483 (603) 271-3516 FAX(603) 271-3515		<b>REVISIONS</b> DATE DESCRIPTION BY		UMBAGOG NEW BATHHOUSE UMBAGOG LAKE STATE PARK 235 EAST RT 26 CAMBRIDGE, NEW HAMPSHIRE	
		PROJECT No. 80875 CONTRACT: E		EXTERIOR ELEVATIONS	
ENGINEER/ARCHITECT: DNCR	DESIGNED BY: SDC	APPROVED BY: TM	CHECKED BY: TM	DRAWN BY: SDC	SCALE: 1/4" = 1'-0" DATE: 4/27/2018

A2.01  
SHEET