

# ODIORNE POINT STATE PARK

15 Years of coastal ecosystem restoration management

Partnerships prevail





# Natural Resources:

## Wetlands

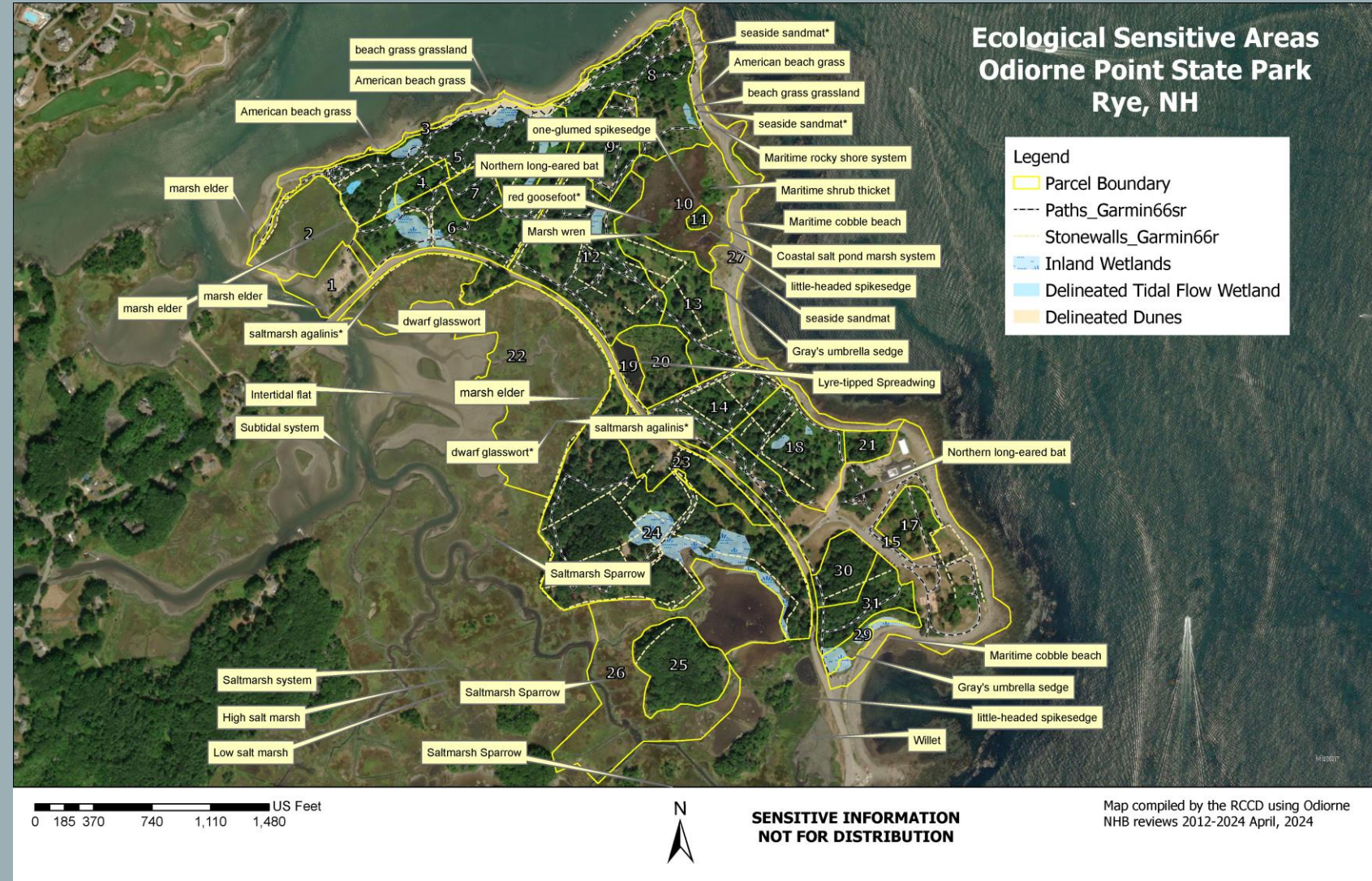
- ❖ Coastal Wetlands
- ❖ Freshwater Wetlands

## Rare Plant/Animals

- ❖ Multiple RTE Plant Species
- ❖ Saltmarsh Sparrow
- ❖ Marsh Wren
- ❖ Willet
- ❖ Lyre-tipped Spreadwing
- ❖ Citrine Forktail
- ❖ 3 Bat Species

## Significant Habitat

- ❖ 2 Critically Imperiled
- ❖ 5 Rare or Uncommon
- ❖ Bayberry beach plum maritime shrubland, beach grass grasslands, coastal salt pond marsh, high salt marsh, low salt marsh, brackish marsh, tidal creek bottom.





# Cultural Resources:



1784



1857

**Pre Colonial:** The Indigenous people of this region (referred to as the Pennacook-Pawtucket at the time of contact with Europeans) occupied a coastal region of New Hampshire that was bounded roughly by the Saco River valley in Maine to the north and northeastern Massachusetts to the south. May also have been know as Pennacooks, Abenakis, or Piscataqua specifically in the Odiorne Point area.

**1622-1623:** Expedition under David Thomson to establish a colony in Native American territory which led to the establishment of the first colonial settlement in New Hampshire in the vicinity of Odiorne Point (Pannaway may have been the name used by Native Americans).

**1660-1700s:** John Odiorne & John Frost

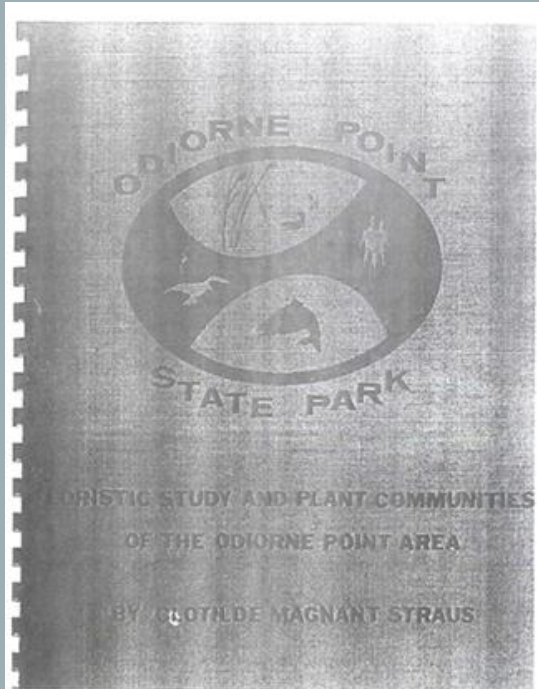
**1800s:** Farming gives way to summer homes (Sagamore House)

**1942:** Fort Dearborn

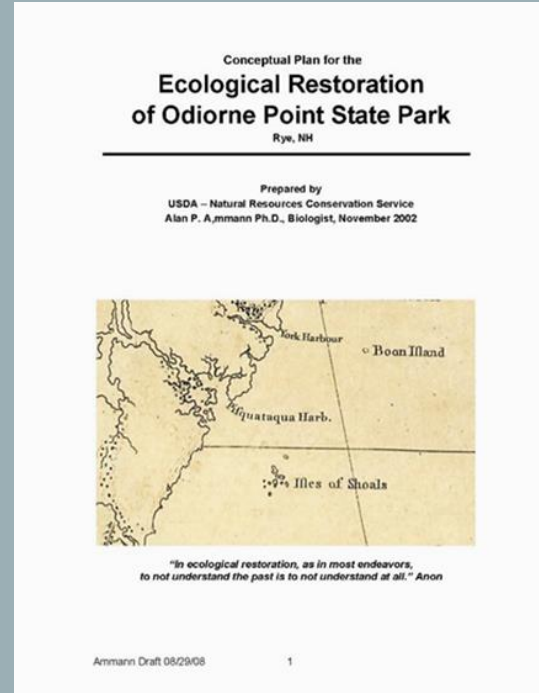
**1961:** State of New Hampshire

*Source: Phase IB Intensive Archaeological Investigation of Invasive Plant Species Management at Frost Point in the Odiorne Point State Park Rye New Hampshire (2018).*

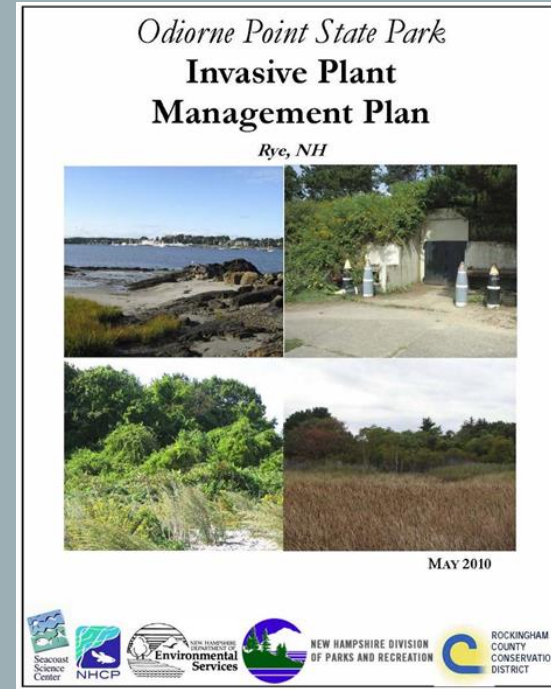
# Restoration Plans:



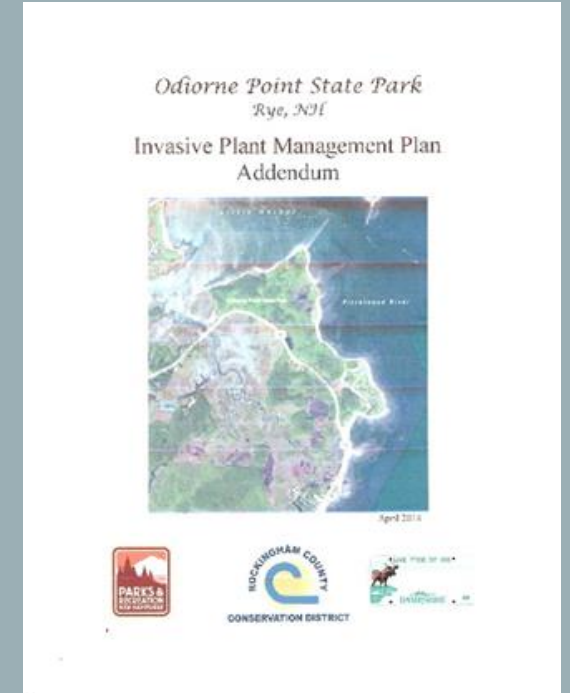
Straus, 1972



Ammann, 2002



RCCD, 2014



NHCP, 2009






# HABITAT RESTORATION

## ODIORNE POINT STATE PARK

Native ecosystems at Odiorne Point State Park have been severely degraded due to centuries of human disturbance. Past disturbance has led to an invasion of non-native invasive plants and it is one of the most serious stressors these coastal habitats face today. Odiorne Point State Park is comprised of some of the rarest native ecological communities in New Hampshire that include dunes complexes, over-wash coastal marshes, and maritime cobble beaches. Since 2010, in partnership with NH Department of Natural and Cultural Resources (DNCR), the Rockingham County Conservation District (RCCD) and other partners have been working to restore these critical ecosystems.

What you might see while you're visiting the Park:



Using an excavator with a mounted drum mower, areas to the Park with some of the most diverse native plant populations were mowed in December, 2022. As an initiative to work towards reestablishing the native plant population in this location as well as other areas of the park, volunteer efforts, integrated pest management (IPM) practices, native planting efforts, and significant partner coordination will be vital.

**Benefits of Mowing**

- Allows appropriate access for habitat restoration
- Promotes rapid regeneration of various native plant species such as sedge, dogwood and yellow
- Removes excess litter/debris that are weighing down and strangling native tree species
- Reduces risk of invasive plantations



Active planting of native species is and has been completed in a variety of coastal habitat types throughout the park in an effort to promote the establishment of diverse plant communities. Historical plant species data is utilized in determining what plants were native to the Park prior to the construction of mowlines, and is used as a guide for current restoration plantings. Additional considerations for determining species plantings include climate, growth rate, vegetation structure, and conditions and use land use. Seed cover, status and tagging may be seen when planting new native plants.

**Benefits of diverse native plant communities**

- Supports a greater variety of wildlife species
- Increased soil carbon storage



Volunteers are an invaluable part of this project and we could not have had such great ecological success without their assistance. Thank you to our 1,000+ volunteers from the past year who have helped with the restoration efforts at the Park. Volunteers learn about native plant communities and invasive plants in the Park while working with native restoration techniques such as mowing and/or pulling invasive plants, collecting site information, native planting and seedling, seedling plants, brush removal and more!

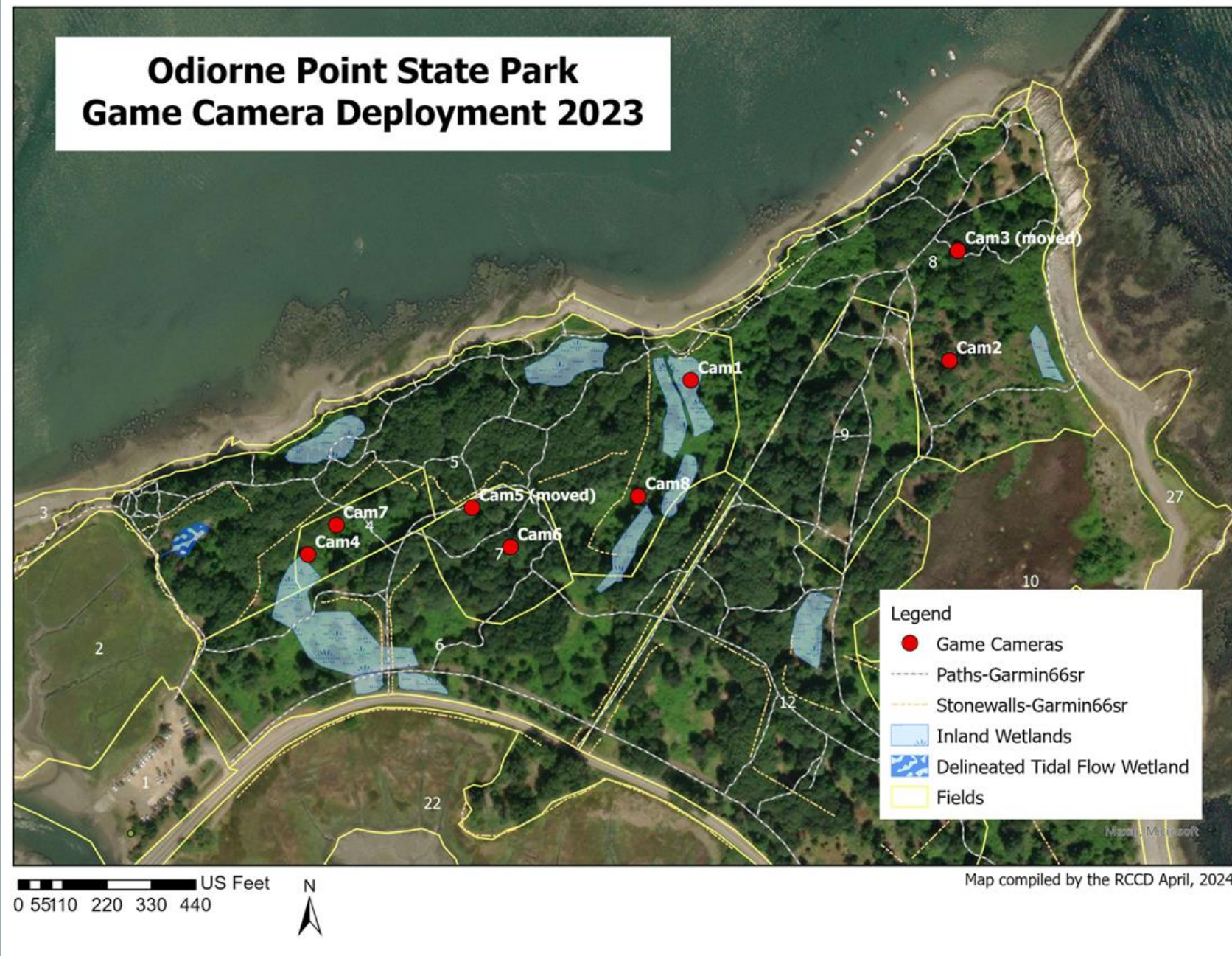
For more information on volunteering please visit our website [www.rockinghamccdc.org](http://www.rockinghamccdc.org) or contact the Seacoast District Center at [info@rockinghamccdc.org](mailto:info@rockinghamccdc.org)





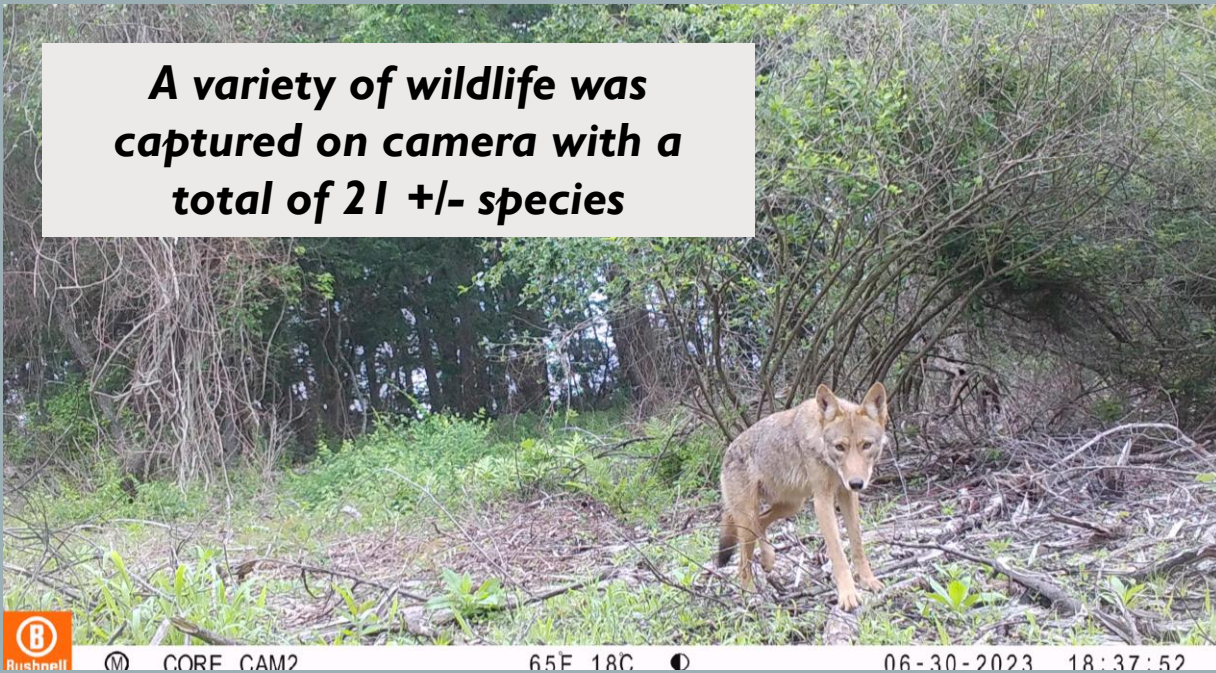


*May of 2023, six game cameras were deployed in the northern portion of the park. The intent of the installation was to gain a better understanding of wildlife species' presence and how they use the area. Camera 3 and 5 were moved to new locations shortly after being installed (now 7 and 8).*





***A variety of wildlife was  
captured on camera with a  
total of 21 +/- species***







Bushnell CORE\_CAM 69F 20C



Bushnell

***Bobcat captured on camera  
at 3 of the 6 sites.***



Bushnell CORE\_CAM 51F 10C 05-26-



Bushnell CORE\_CAM2 63F 17C 05-19-2023 05:50:28





**Lots of deer**





# Challenges/Constraints:

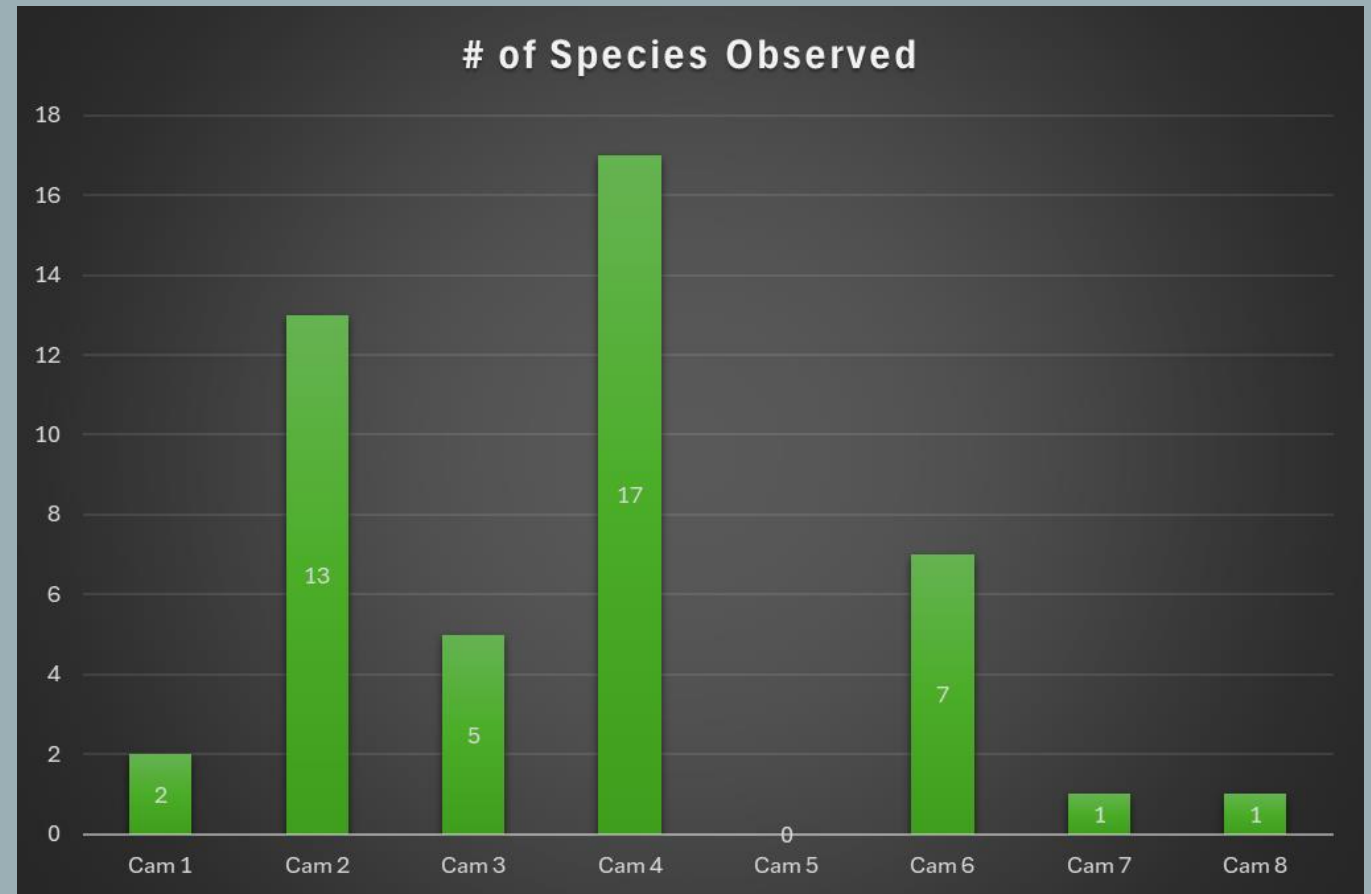
*Technical difficulties, false triggers, wildlife curiosity, vegetation growth, etc.*





- American goldfinch (*Spinus tristis*)
- Blue Jay (*Cyanocitta cristata*)
- Bobcat (*Lynx rufus*)
- Coopers hawk (*Accipiter cooperii*)
- Eastern chipmunk (*Tamias striatus*)
- Eastern cottontail (*Sylvilagus floridanus*)
- Eastern coyote (*Canis latrans*)
- Eastern gray squirrel (*Sciurus carolinensis*)
- Gray catbird (*Dumetella carolinensis*)
- Groundhog (*Marmota monax*)
- Mourning dove (*Zenaida macroura*)
- Northern flicker (*Colaptes auratus*)
- Raccoon (*Procyon lotor*)
- Red squirrel (*Sciurus vulgaris*)
- Song sparrow (*Melospiza melodia*)
- Striped skunk (*Mephitis mephitis*)
- Virginia opossum (*Didelphis virginiana*)
- Weasel (*Mustela sp.*)
- White tailed deer (*Odocoileus virginianus*)
- White throated sparrow (*Zonotrichia albicollis*)
- Wild turkey (*Meleagris gallopavo*)

- Not enough data and too many factors unaccounted for site comparison, however we were able to document a variety of species found here.







CORE\_CAM5

79F 26C



Ⓜ CORE\_CAM1

61F 16C

05-26-2023 02:47:06



CAM1

44F 6C

11-08-2023 05



Ⓜ CORE\_CAM5

73F 22C

05-14-2023 04:50:26

Off trail public use



AM5

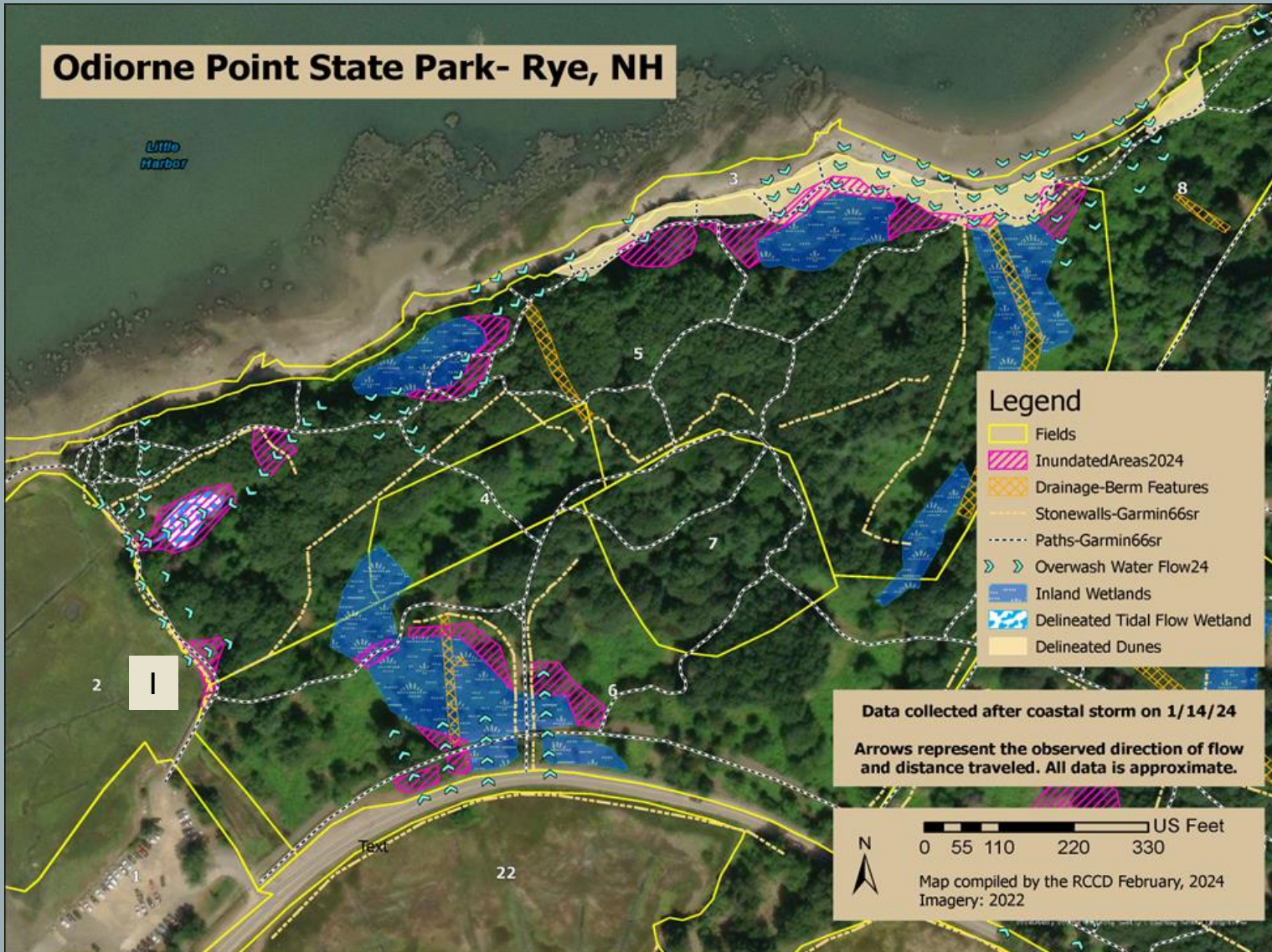
85F 29C

05-13-2023 03:2



# Coastal Overwash & Inundation

## Odiorne Point State Park- Rye, NH



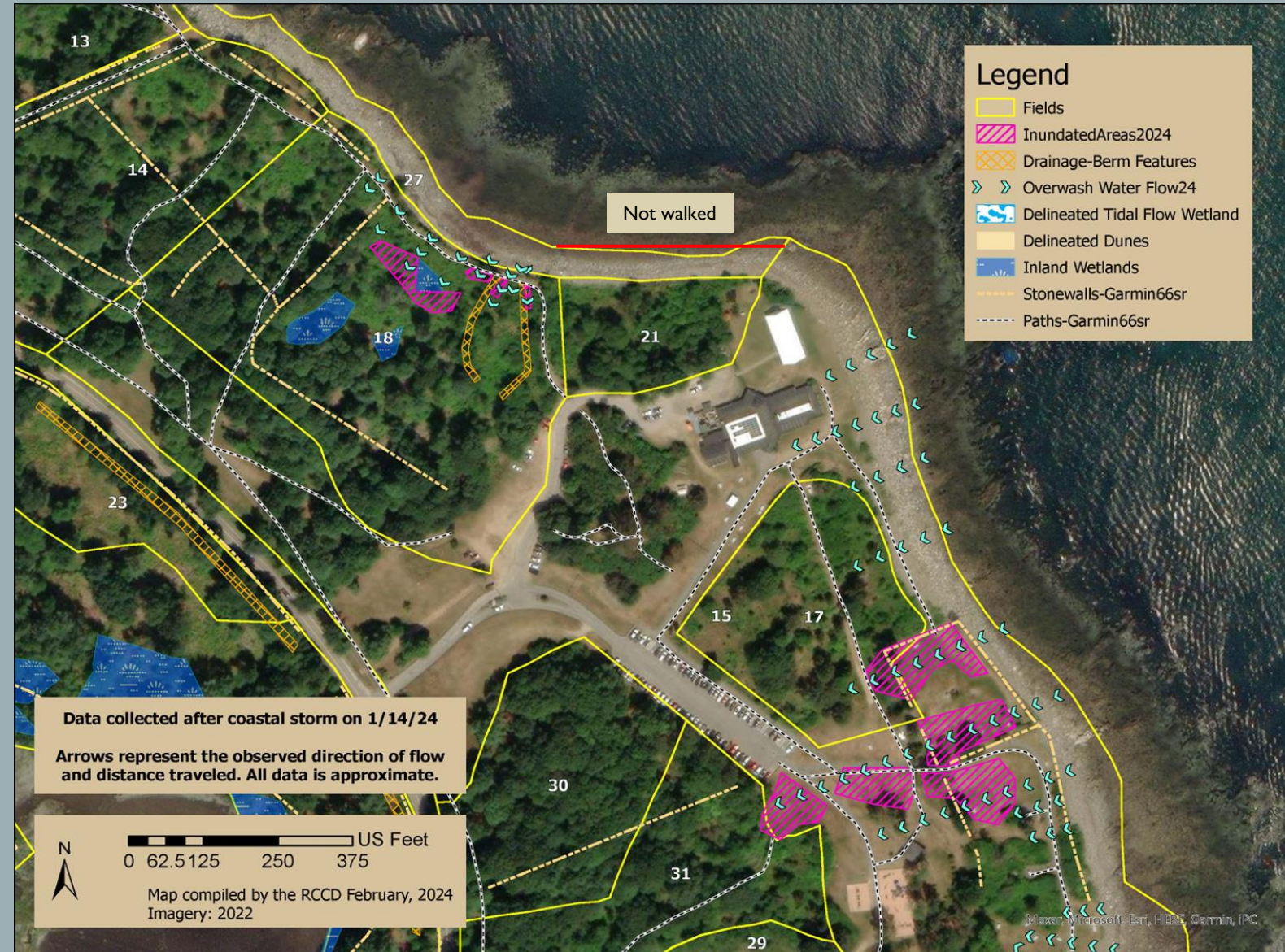
12/2022



01/2024



# Coastal Overwash & Inundation



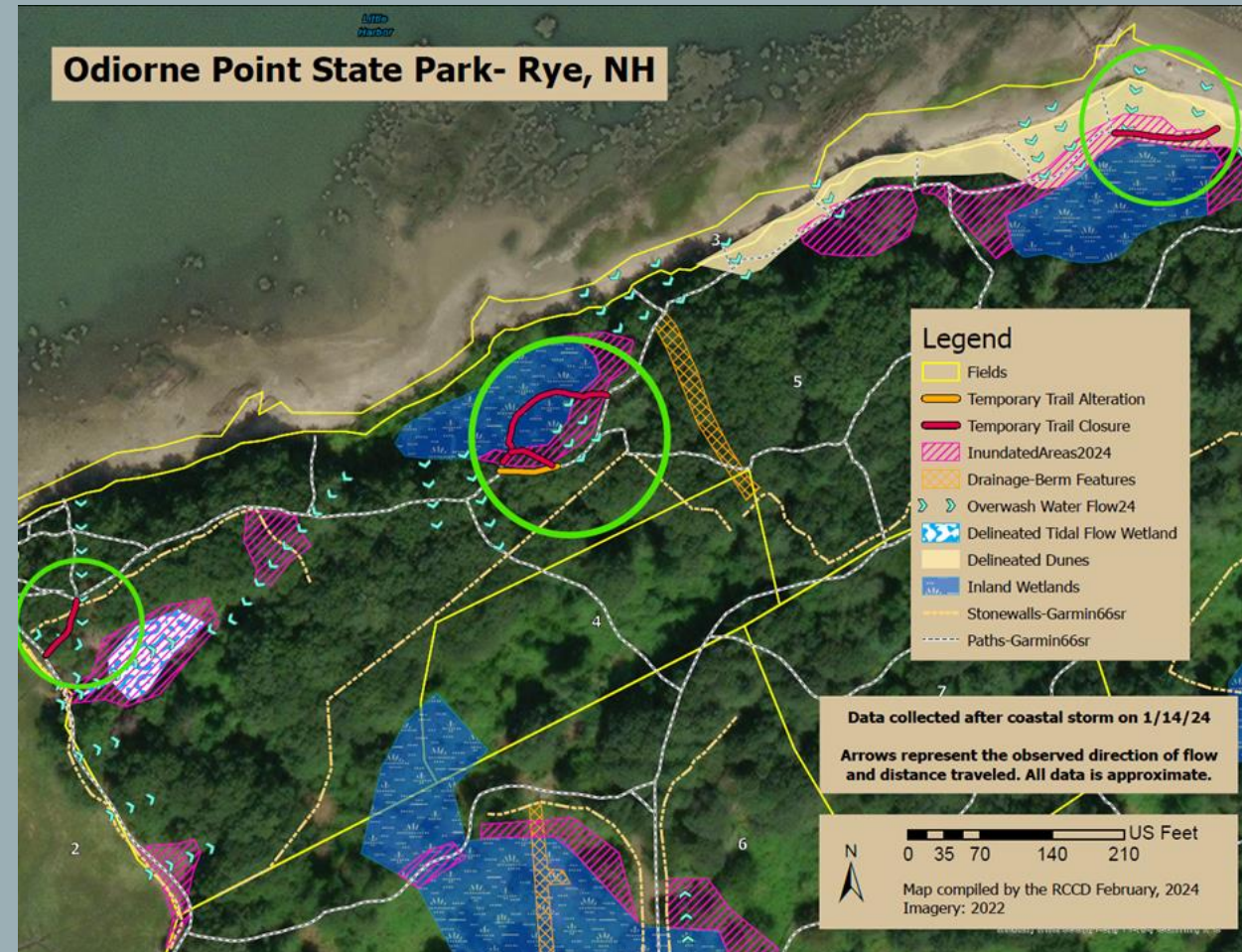




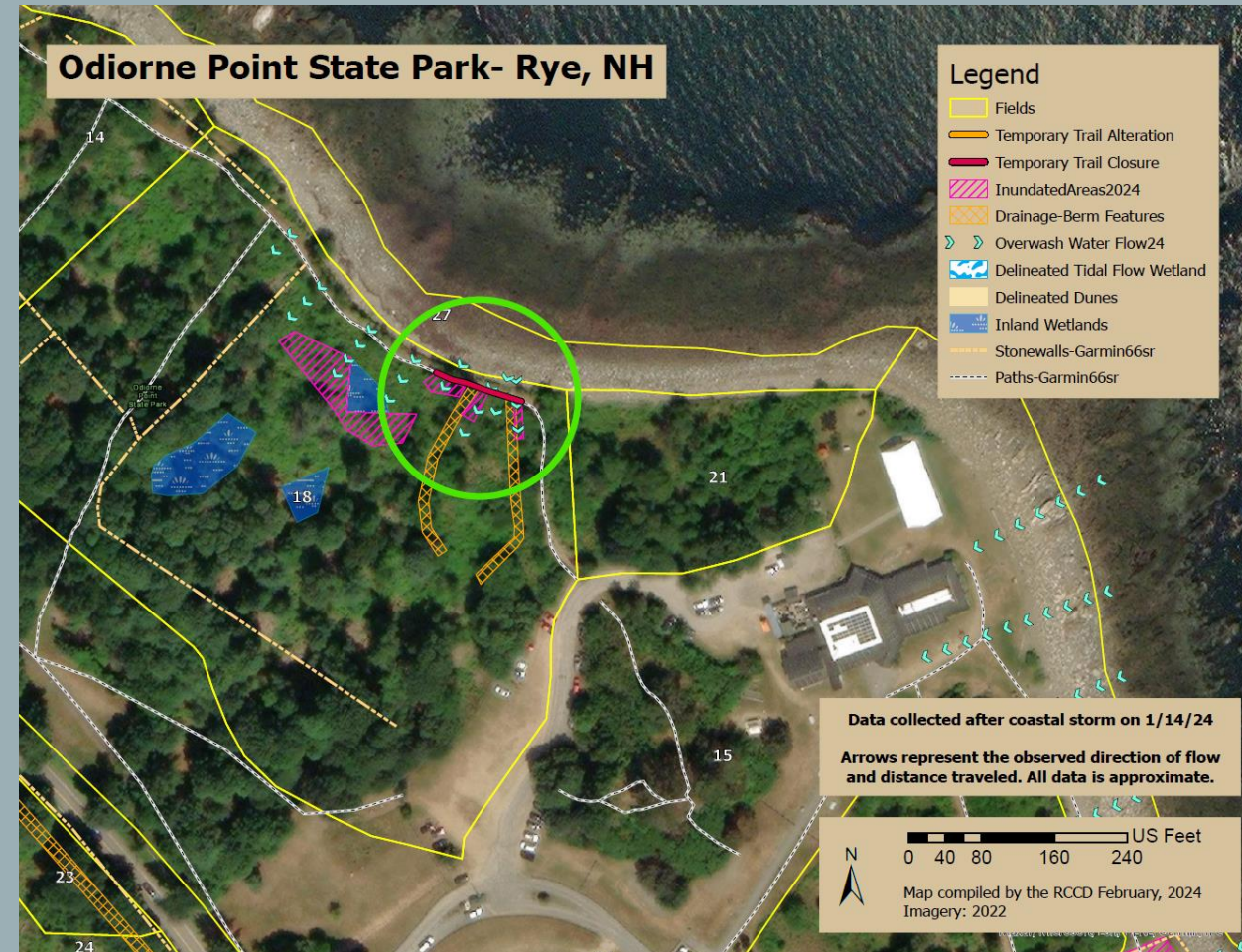


# Temporary Trail Closures/Alterations

Odiorne Point State Park- Rye, NH

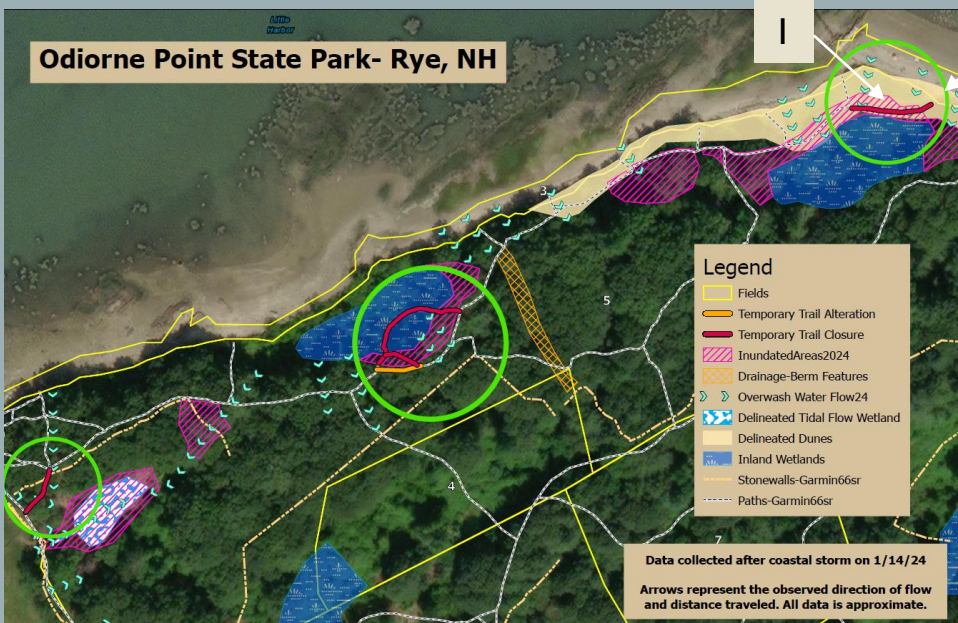


Odiorne Point State Park- Rye, NH





# Temporary Trail Closures/Alterations

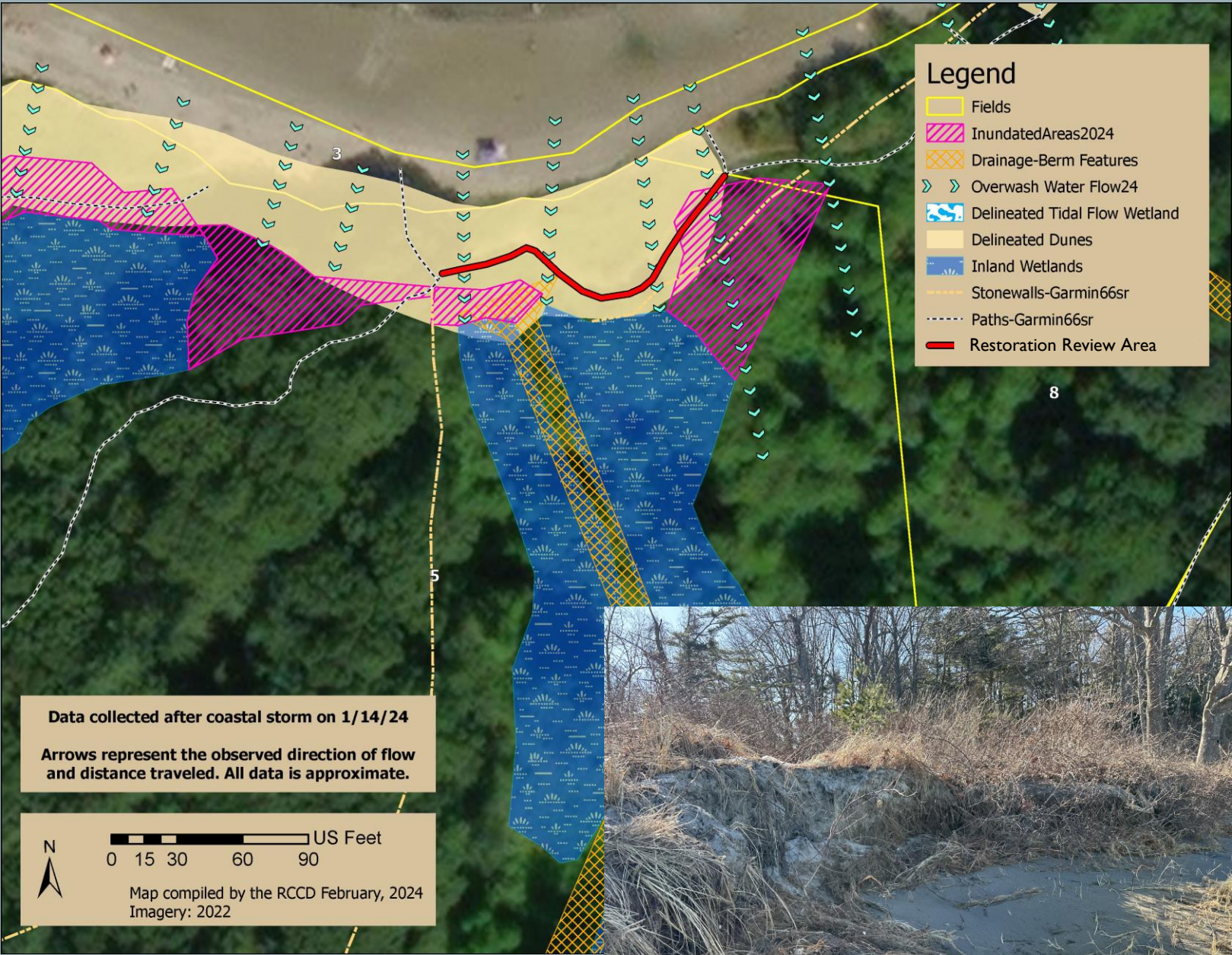




# Odiorne Point State Park- Rye, NH











3/2022



1/2024



4/2024



## Fairhill/Odiorne Saltmarsh Collaborative Restoration Design Planning Project, NHCF



**NFWF AMERICA THE BEAUTIFUL CHALLENGE GRANT, NHCP**



# Next Steps and Funding Options

Planning, data gathering, signage design, phased modification plan, future trail plan and map, initial conservation practices where most appropriate.

- NH DES, CRG, -\$61,850
- NH SCC - \$28,382
- DNCR, Base Funding - \$76,000

## Potential future funds:

- NFWF – NCRF, \$450,000 +/- – for final designs at Little Harbor shoreline area with engineering, permitting project management and outreach
- NHDAMF, IPM – \$20,000 +/- for continued management practices, updated resource mapping for other coastal areas, continued outreach and restoration where appropriate





# PARTNERS AND FUNDERS PREVAIL



New Hampshire  
Coastal Program



Rockingham County  
Conservation District



Sea Grant  
New Hampshire



Extension

New Hampshire  
Department of Agriculture,  
Markets & Food



SEACOAST  
SCIENCE CENTER

in Odiorne Point State Park



NEW HAMPSHIRE  
DEPARTMENT OF  
Environmental  
Services

## THANK YOU FOR YOUR CONTINUED SUPPORT!