

Franconia Notch State Park Cannon Mountain Aerial Tramway



Outline



- New Hampshire State Parks
- Franconia Notch State Park
- Aerial Tramway Background
- Options
- Comments

Department of Natural and Cultural Resources

- Divisions
 - Historical Resources
 - Forests and Lands
 - Parks and Recreation
 - State Library
 - Arts Council



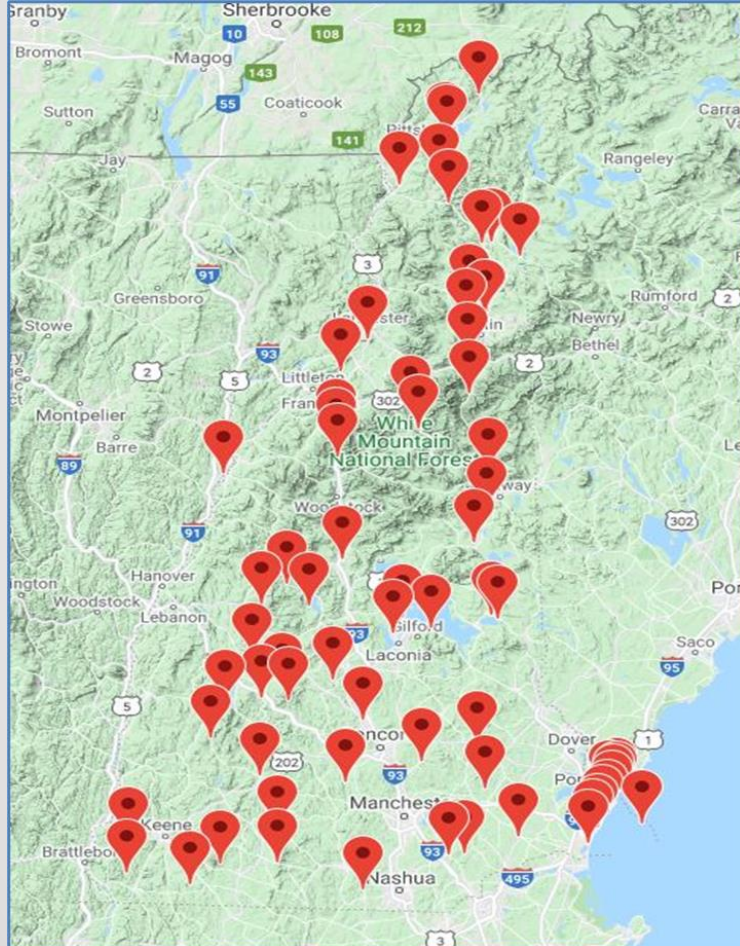
New Hampshire
Department of
Natural & Cultural Resources



New Hampshire
State Council on the Arts



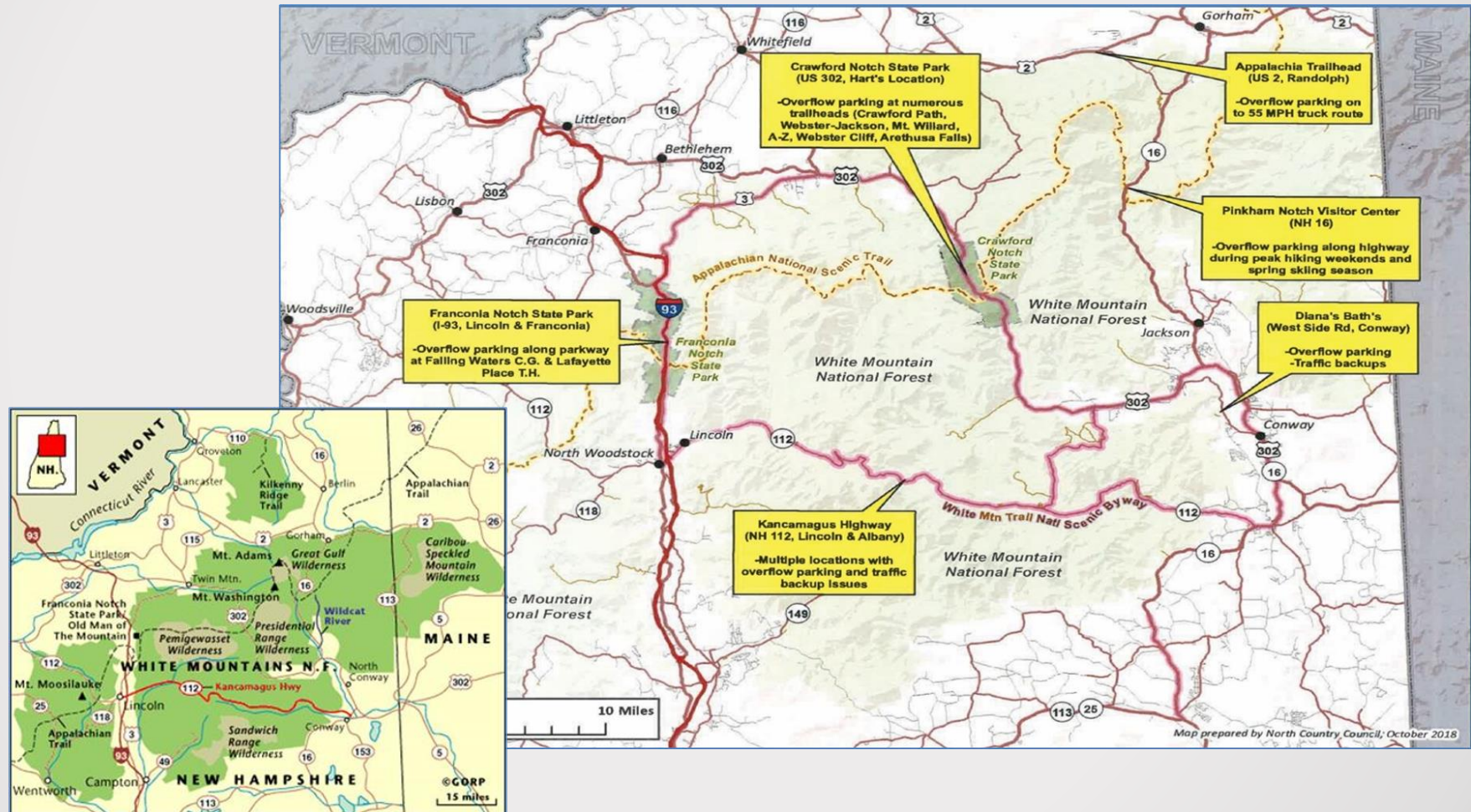
New Hampshire State Parks



State Parks Funding

- 30 million operating budget for the entire Division
 - Forty-one (41) of 93 parks generate revenue
 - Twenty-six (26) generate positive revenue
 - FNSP/Cannon 48% of total revenue
- RSA 216-A:3 (Self-Funding)
 - Fees to recover portion of budget expenses consistent with NH Parks Purpose
 - Fees according to market conditions and private industry trends

Franconia Notch State Park



Park Information

- Chapter 260 of the Laws of 1925
 - Dedicated as a memorial to the men and women of NH who served the nation in times of war
- 6,440 Acres
- Features/Attractions
 - Flume Gorge
 - Basin
 - Lafayette Place Campground
 - Cannon Mountain Ski Area & Aerial Tram
 - Echo Lake Beach and RV campsites
 - Bike Path, Hiking Trails and Waysides
 - Trail access to WMNF
 - Sugarbush



FRANCONIA NOTCH STATE PARK

NEW HAMPSHIRE

Overview



The Basin



Cannon Cliff



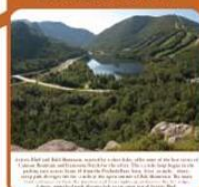
Cannon Tram



Winter Activities



Artists Bluff



Recreation Path



Flume Gorge



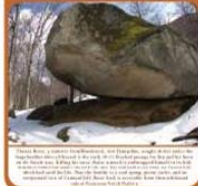
Covered Bridges



Camping



Boise Rock



Echo Lake Beach



LEGEND	
	PARKING
	DRINKING WATER
	PICNIC AREA
	RESTROOM
	TRAILHEAD
	RECREATIONAL AREA
	INFORMATION
	INTERPRETIVE SIGN
	ALPINE GARDEN
	GIFT SHOP
	APPALACHIAN TRAIL
	CAMPING
	SAFETY AREA
	MOUNTAIN
	LAKE
	RIVER
	ROAD
	TRAIL



cannonmountain



Aerial Tramway

- First ski trail, the Taft Trail, opened in 1933
- First tram opened in 1938 (operational for 42 years)
- Replaced in 1980 (operating for 42 years and counting)
 - Access to 4120 ft summit
 - Each car has 80 person capacity
 - Ascends 2,180 vf
 - 8 minutes to summit
 - 500 +/-visitors/hr
- One of two in NE



Visitation & Revenue

Lafayette Place	14,000	\$800k
Flume Gorge	170,000	\$3,300k
Cannon Tram	75,000	*\$1,500k
Echo Lake FNSP	32,000	\$250k
Cannon Ski Area	155,000	\$8,000k
TOTAL	446,000	\$13,850k



Tram Immediate Needs

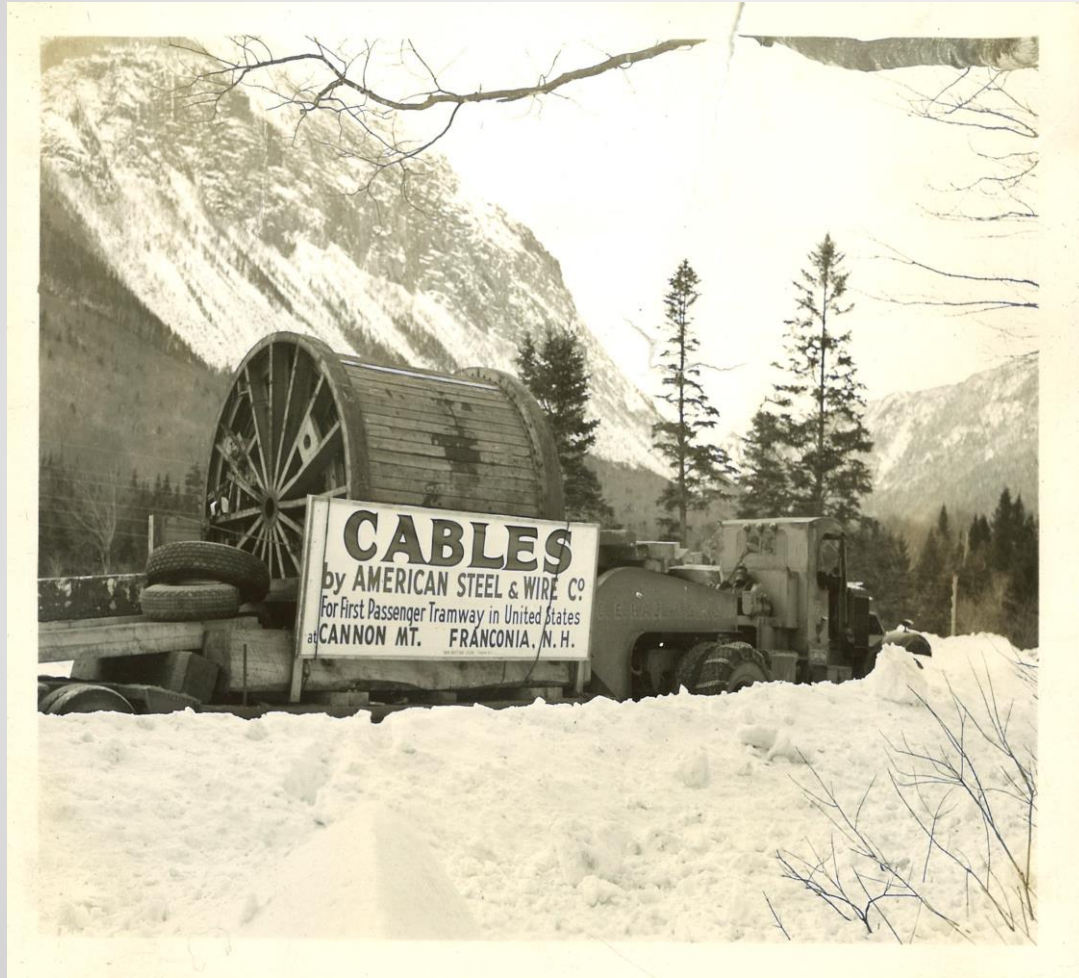
- 14 Major component replacement needs
 - Tram cabins
 - Carriage
 - Haul ropes
 - Hanger arms
 - Carriage trolleys
 - Electromechanical components
 - Motor & braking systems
 - Painting of superstructure
- Overhaul
 - Bull wheels
 - Towers
 - Counterweight
- Assess
 - Towers and concrete bases
- 42 years old
- Remaining life 3-5 years
- \$14+ million cost
- New lifespan?

Total Replacement

- Entire drive chain
- Bull wheels
- Towers
- Foundations
- Roller chain/saddle
- Counter bull wheel
- Haul rope counterweight
- Optional 100 person cabin vs 80
- \$25+ million cost



Options



- Tram vs. Gondola
- Rebuild vs. New
- 80 passenger vs. 100
- Sole source vs. Bid

Gondola vs. Tram

- Gondola increases capacity 2X – 5X
 - Need matching capacity of summit services and trail system
- Fewer individuals in each cabins
 - Pandemic family groups
- Gondola possible negatives
 - More infrastructure/ equipment (towers)
 - Increased operating costs
 - Lower to ground
- Tram can withstand greater winds (30%+/-)
- Cannon & Park brand identity and history
 - Ketchup and Mustard

Tram Options

- Tram 100 v. 80
 - Increase visitors, cabins space and revenue
 - Requires more substantial infrastructure
 - Greater cost for 100
- Rebuild vs. New
 - Less cost now
 - Uncertainty in remaining componentry condition
 - Requires additional investment in nearer future
- Sole Source vs. Bid

Thank you!

- Presentation
 - <https://www.nhstateparks.org/news-events/improving-state-parks>.
- Comments
 - TramComments@dn-cr.nh.gov or nhparks@dn-cr.nh.gov by March 1, 2022.