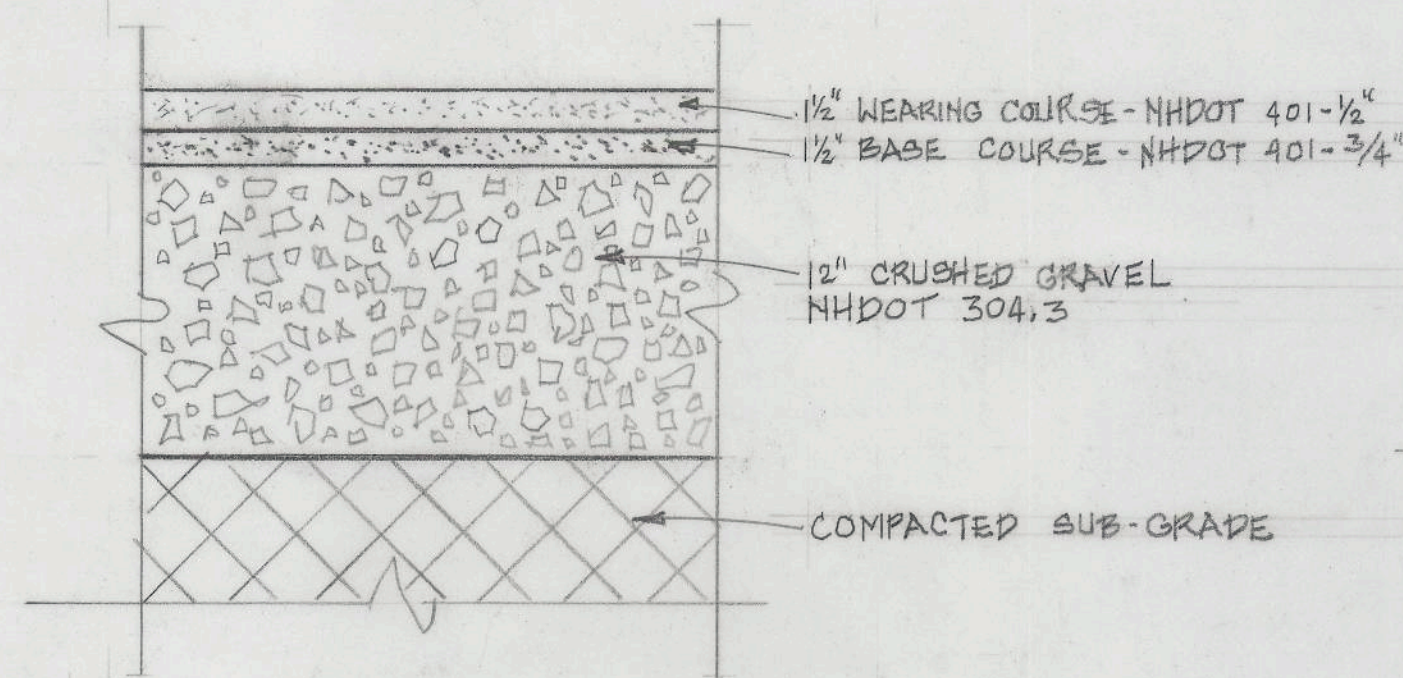
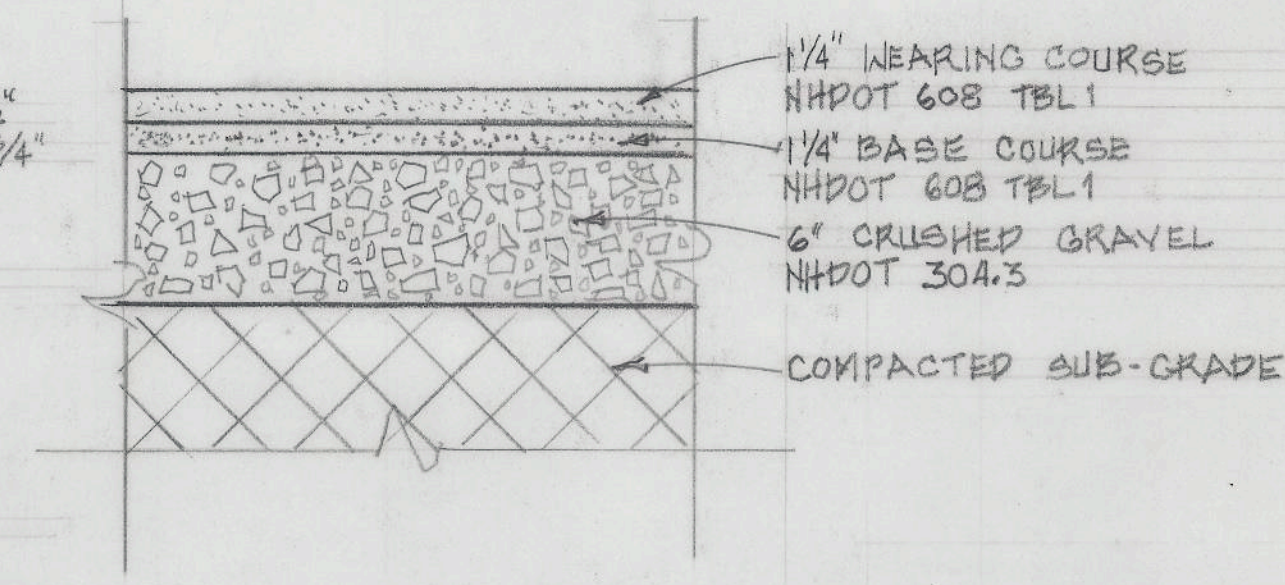


FOX STATE FOREST PAVING PROJECT
SCOPE OF WORK

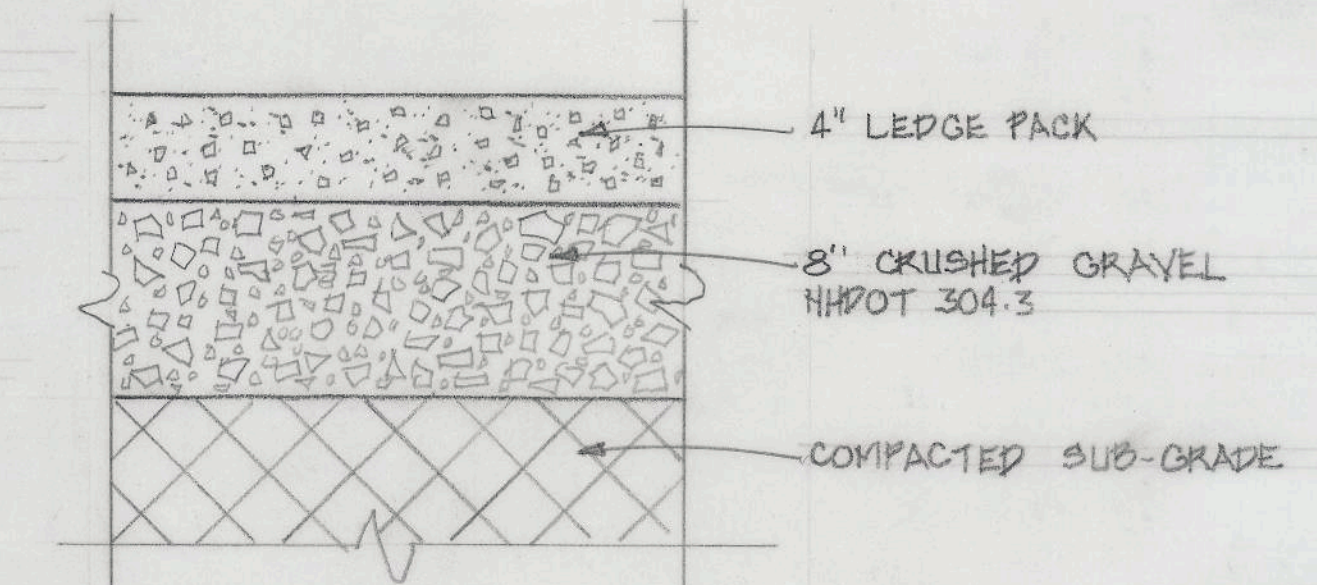
1. REMOVAL AND GRINDING OF EXISTING BITUMINOUS CONCRETE PAVING.
2. RE-GRADING OF PARKING LOT AREA TO ACCOMMODATE PARKING LOT EXPANSION. REMOVAL OF FROST-HEAVED ROCKS AND DEFUNCT CULVERT FROM PARKING LOT AREA SUB-GRADE.
3. EXTENSION OF EXISTING DRIVEWAY TO CREATE A NEW LOOP DRIVEWAY CONNECTING THE BARN, GARAGE AND BALDWIN CENTER.
4. PREPARATION OF PAVING SUB-BASE FOR DRIVEWAYS, PARKING LOT AND SIDEWALK, AND COMPACTION OF BASE MATERIALS.
5. PLACEMENT, ROLLING AND COMPACTION OF BASE AND WEARING COATS OF BITUMINOUS CONCRETE PAVING.
6. RE-GRADING OF GRAVEL ACCESS DRIVE TO THE LOWER LEVEL OF THE BARN. PLACEMENT OF NEW CRUSHED GRAVEL BASE AND RE-SURFACING OF THE DRIVEWAY WITH LEDGE-PACK (STONEDUST AND AGGREGATE MIX).
7. STRIPING THE PARKING LOT AND LOOP DRIVEWAY FOR PARKING SPACES.
8. LOAMING AND SEEDING LANDSCAPE AREAS DISTURBED BY THE GRADING AND PAVING WORK.



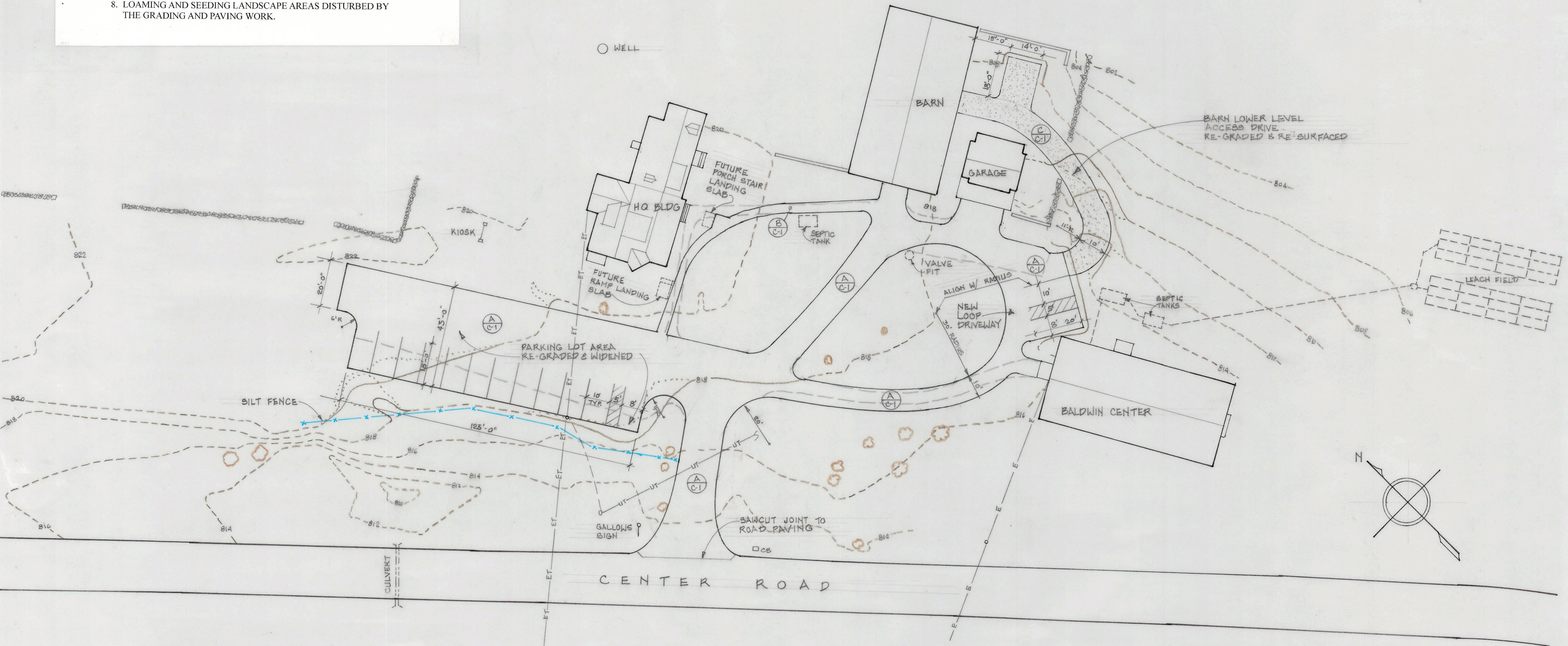
A ASPHALT DRIVEWAY
C-1 SCALE: 1/8" = 1'-0"



B ASPHALT SIDEWALK
C-1 SCALE: 1/8" = 1'-0"



C GRAVEL DRIVEWAY
C-1 SCALE: 1/8" = 1'-0"



PROJECT No: CAP 2420
REVISIONS

DATE: MAY 8, 2024
DRAWN BY: TCM
SCALE: 1" = 20'

PAVING PLAN
CIVIL

REPAVING PROJECT
FOX STATE FOREST
309 CENTER RD, HILLSBOROUGH, NH

C.P. & M.
DEPT. OF NATURAL & CULTURAL
RESOURCES
172 PEMBROKE RD. CONCORD

C-1