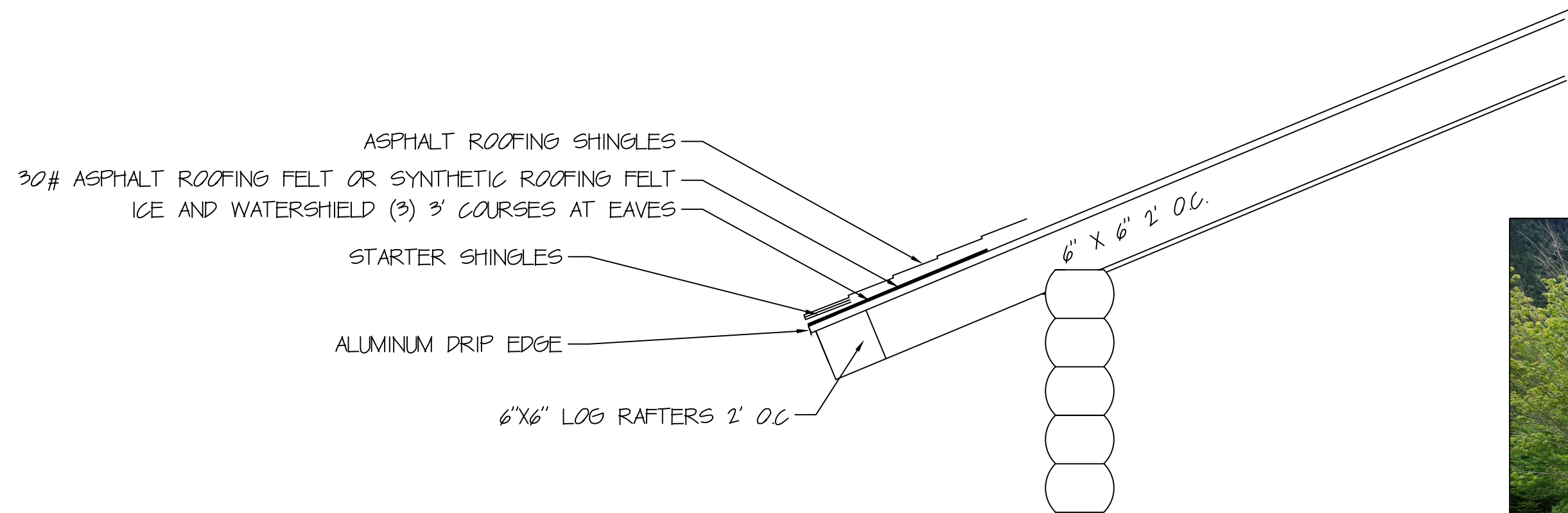
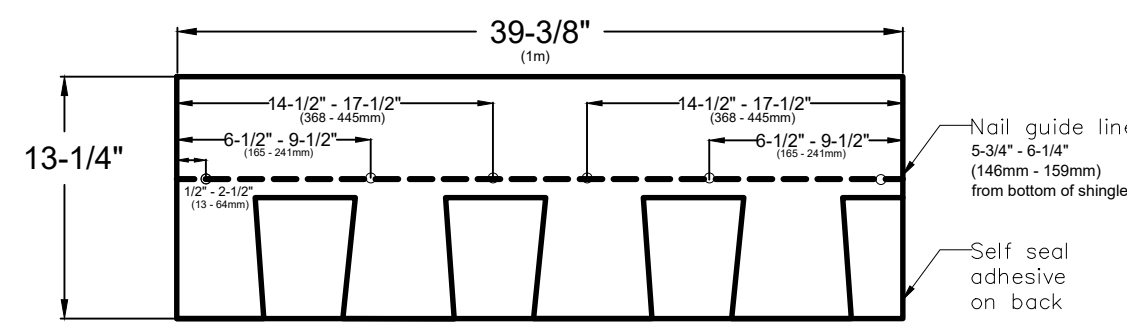


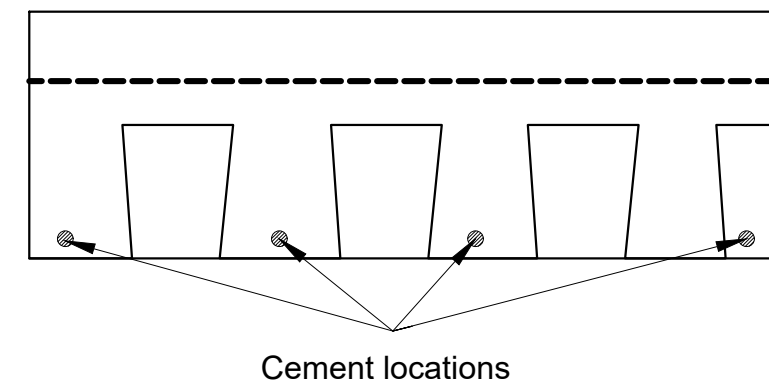
1 LAFAYETTE PLACE CAMPGROUND VISITORS CENTER
1/4" = 1'-0"



2 ROOF SECTION
1 NOT TO SCALE



3 GAF ENHANCED NAILING PATTERN
1 NOT TO SCALE



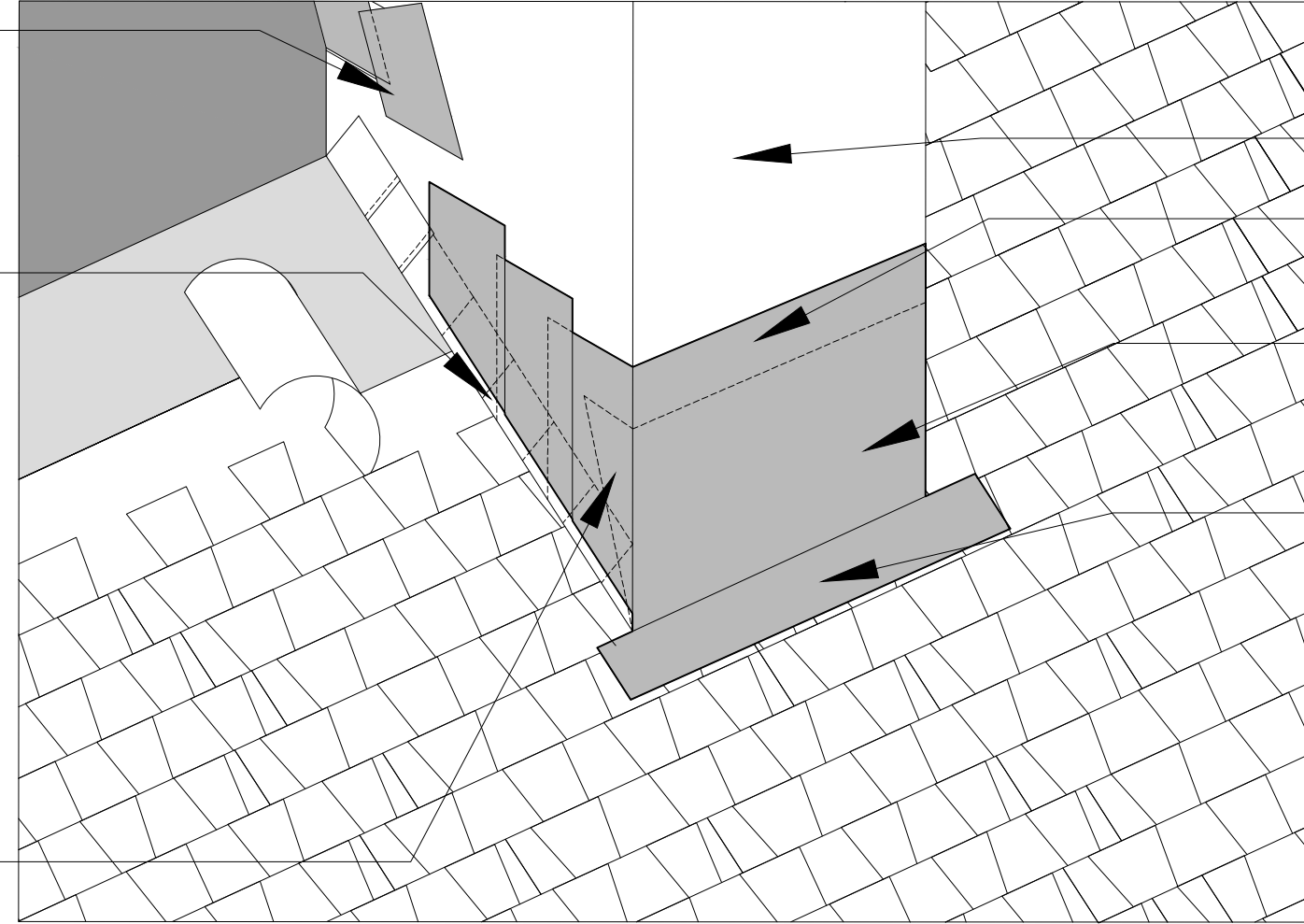
4 GAF CEMENT LOCATIONS
1 NOT TO SCALE

EXTEND LEAD COUNTER FLASHING OVER BASE FLASHING.

USE ONE PIECE LEAD STEP FLASHING FOR EACH SHINGLE COURSE. PLACE STEP FLASHING OVER THE SHINGLE AND NAIL EACH STEP FLASHING PIECE TO THE ROOF DECK WITH 2 COPPER NAILS. SEAL THE OVERLYING ASPHALT SHINGLES TO THE STEP FLASHING WITH ASPHALT PLASTIC CEMENT.

DO NOT SAW CUT STONES FOR THE LEAD COUNTER FLASHING INSTALLATION. REUSE THE THE EXISTING COUNTER FLASHING LOCATIONS.

WRAP CORNERS OF LEAD BASE FLASHING AT LEAST 3"



5 CHIMNEY FLASHING DETAIL
1 NOT TO SCALE

SHINGLE INSTALLATION

START AT EITHER RAKE AND LAY IN EITHER DIRECTION

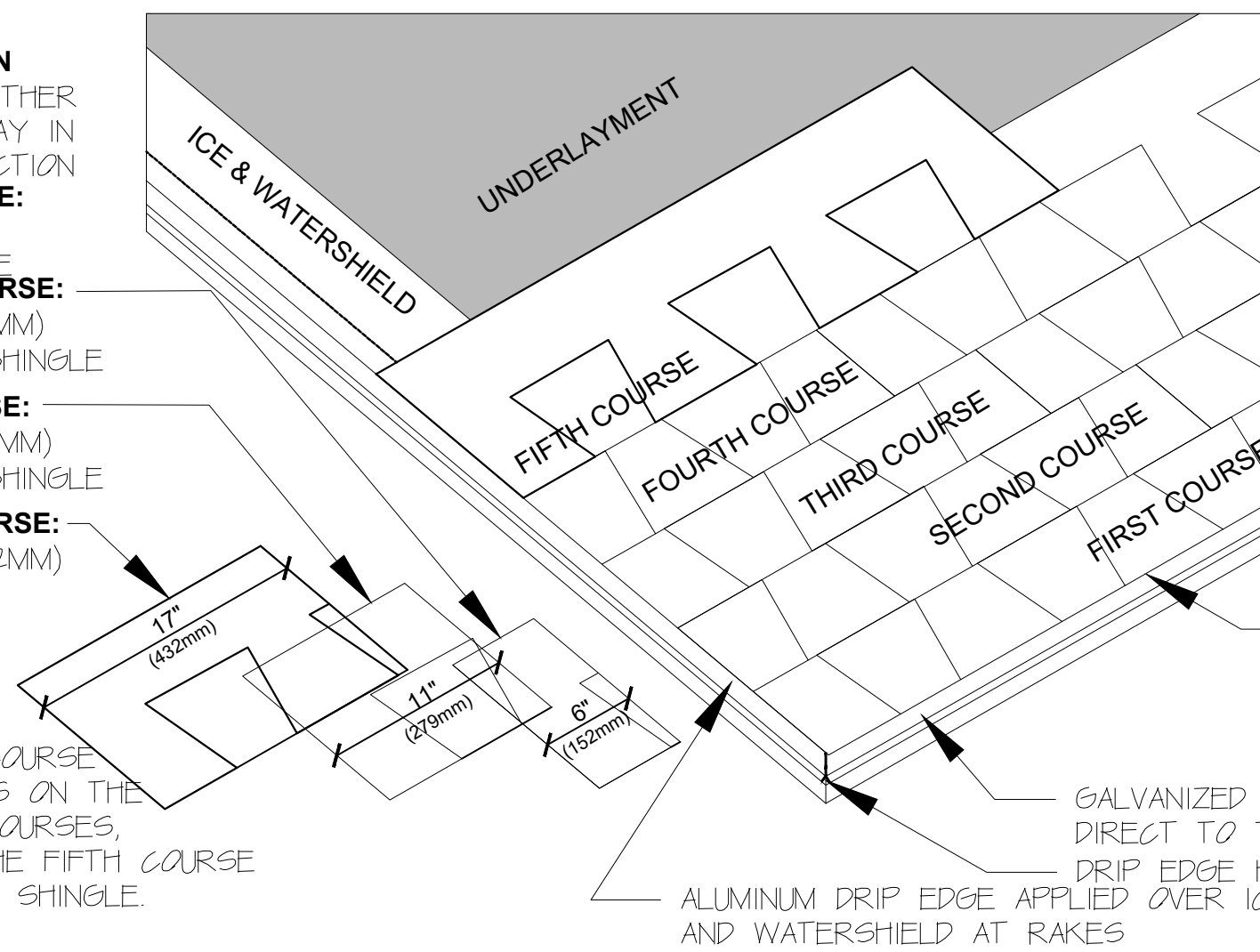
FIRST COURSE: START WITH FULL SHINGLE

SECOND COURSE: TRIM 6" (152MM) OFF FIRST SHINGLE

THIRD COURSE: TRIM 11" (279MM) OFF FIRST SHINGLE

FOURTH COURSE: TRIM 17" (432MM) OFF FIRST SHINGLE

REMAINING COURSES: REPEAT THE 1ST - 4TH COURSE INSTRUCTIONS ON THE REMAINING COURSES, STARTING THE FIFTH COURSE WITH A FULL SHINGLE.



NOTES:

1. CONTINUE EACH COURSE WITH WHOLE SHINGLES.
2. STRIKE A CHALK LINE ABOUT EVERY 6 COURSES TO CHECK PARALLEL ALIGNMENT WITH EAVES.

PLACE FIRST COURSE OF SHINGLES 1/4" - 3/4" OVER EAVE AND RAKE EDGES, COVERING STARTER COURSE OVERHANG, TO PROVIDE DRIP EDGE.

GALVANIZED METAL DRIP EDGE APPLIED DIRECT TO THE ROOF DECK AT EAVES
DRIP EDGE HEM CORNERS
ALUMINUM DRIP EDGE APPLIED OVER ICE AND WATERSHIELD AT RAKES

6 SHINGLE INSTALLATION DETAILS
1 NOT TO SCALE



7 LAFAYETTE PLACE CAMPGROUND VISITORS CENTER
1 NOT TO SCALE



- NOTES:
1. STRIP AND REMOVE ALL ASPHALT SHINGLE ROOFING MATERIALS IN AREAS AS INDICATED.
 2. INSPECT AND REPAIR WOOD ROOF DECK.
 3. INSTALL ALUMINUM DRIP EDGE.
 4. INSTALL ICE & WATERSHIELD.
 5. INSTALL 30# FELT OR SYNTHETIC ROOF UNDERLAYMENT OVER ENTIRE ROOF DECK.
 6. INSTALL ASPHALT SHINGLES AND RIDGE CAP SHINGLES.

ASPHALT SHINGLE ROOF REPLACEMENT
LAFAYETTE PLACE CAMPGROUND VISITORS CENTER

DATE: JUNE 19, 2013

PROJECT # CAP-2401

SCALE: N/A

APPROVED BY:

DRAWN BY: EDWARD MUSSEY



STATE OF NEW HAMPSHIRE
DEPARTMENT OF NATURAL AND CULTURAL RESOURCES

DESIGN DEVELOPMENT AND MAINTENANCE

LAFAYETTE PLACE CAMPGROUND
FRANCONIA, NEW HAMPSHIRE

SHEET

OF 1