

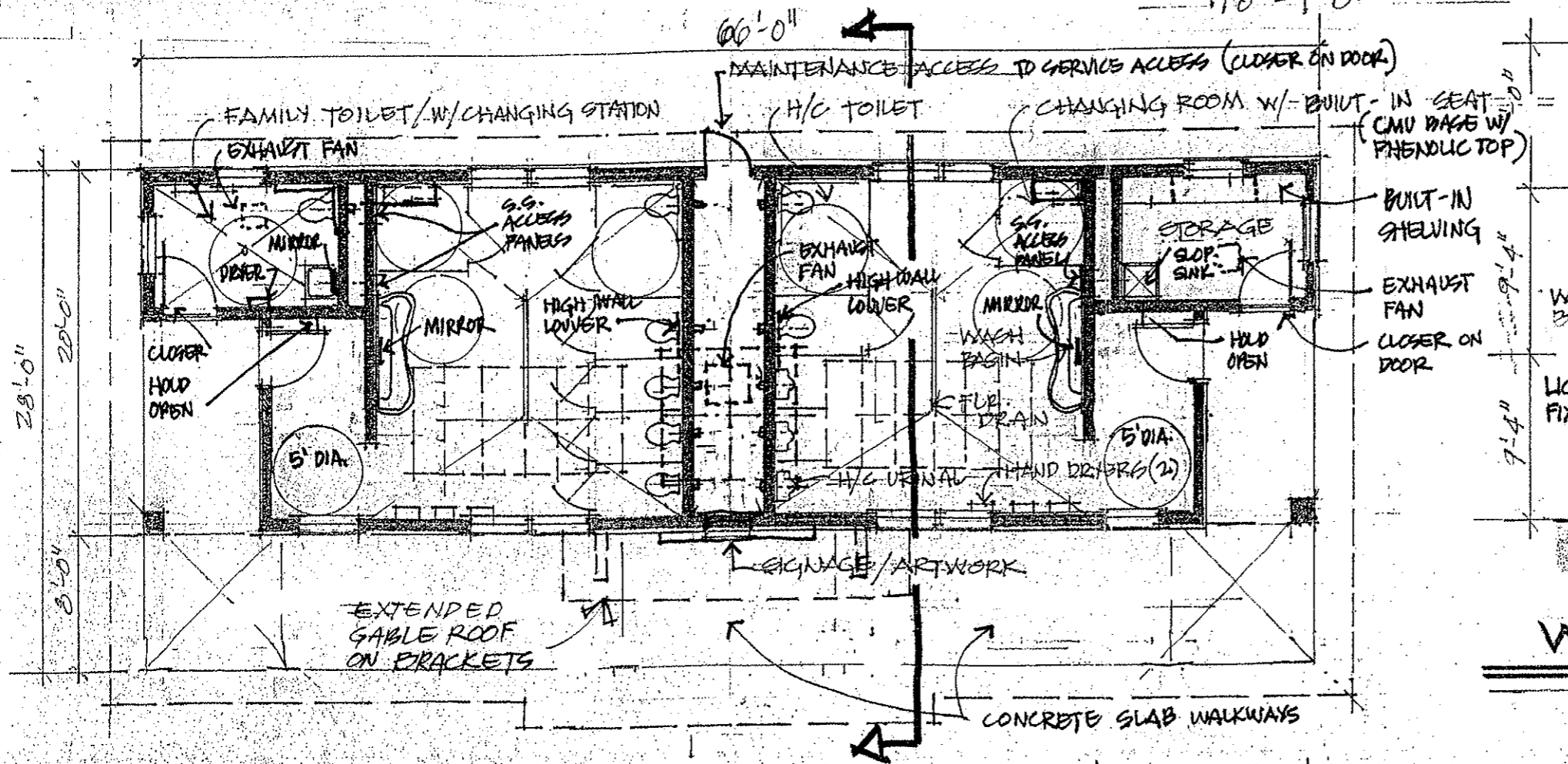
SAMYN • D'ELIA
ARCHITECTS, P.A.

P.O. Box 1259 • Ashland, NH 03217
 (603) 968-7133 • FAX (603) 968-3057
 info@adarchitects.com www.adarchitects.com

REVISED 11.2.2011
 REVISED 11.14.2011

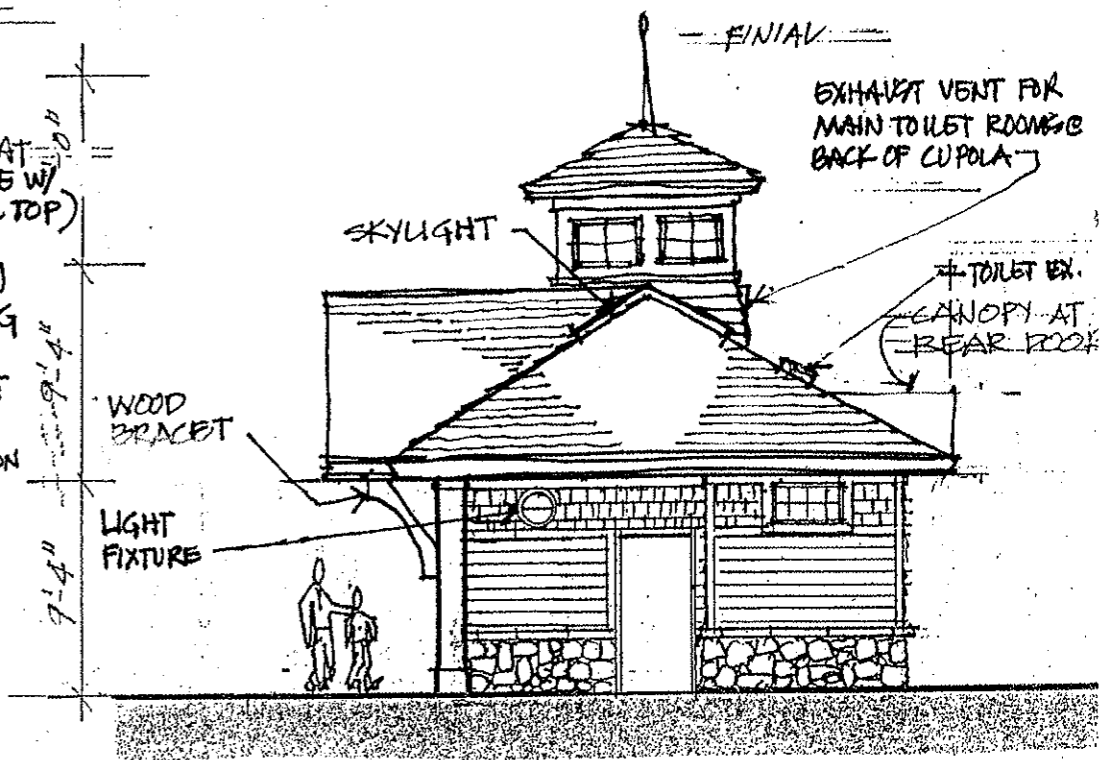
NORTH ELEVATION

1/8" = 1'-0"



PROPOSED FLOOR PLAN

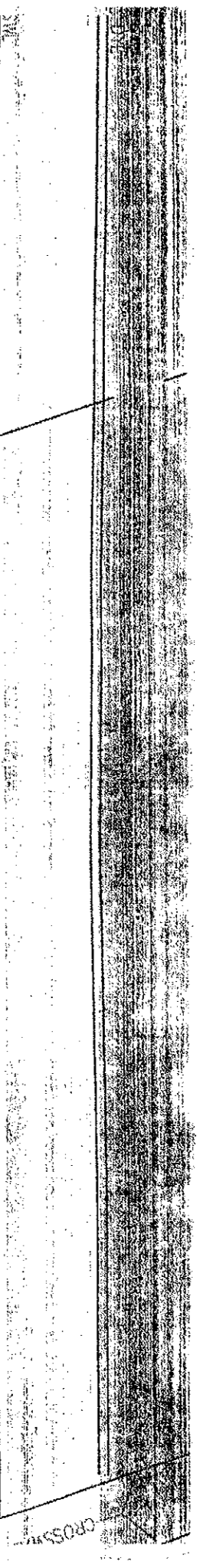
1/8" = 1'-0"



WEST ELEVATION

1/8" = 1'-0"

NORTH HAMPTON BEACH STATE PARK - BATH HOUSE



500'

GRAVEL

GRAVEL

"NORTH HAMPTON STATE BEACH" SIGN

RESERVED PARKING SIGNS

CONCRETE

PREVIOUS FOOTPRINT @ 7/01

DRY WELL
R=10.83'
(NO PIPES VISIBLE)

APPROXIMATE LOCATION
OF SEWER PIPE

HOLDING TANK
R=12.76'
(NO PIPES VISIBLE)

R=10.3'
(NO PIPES VISIBLE)

NO PARKING

PAINTED
PARKING
STALL

STOCKADE FENCE

NO PIPES VISIBLE

N/F STATE OF
NEW HAMPSHIRE
BOOK 2383,
PAGE 620

POST & RAIL FENCE

N/F SEASHELLS, LLC
BOOK 4285,
PAGE 2632

CONCRETE WALK

CONCRETE WALK
66'

X 20'

X 15'

X 15'

X 15'

CONCRETE WALL

PROPOSED SITE PLAN

NORTH HAMPTON BEACH STATE PARK PROPOSED BATH HOUSE

SDA 1119 11.15.2011 SCALE: 1" = 20'