

# North Hampton State Beach

## Redevelopment Project Fact Sheet

### Origin of the Park

The majority of the property known as North Hampton State Beach (Town of North Hampton) was transferred to the Division of Parks and Recreation from the Department of Public Works in December 1980 (along with Jenness State Beach).

### Current Schedule

North Hampton State Beach opens full-time for the season in early May and closes at the end of September. The bathhouse operating hours are from 8:00 am to 7:00 pm daily. Lifeguards are on duty from mid-June through Labor Day. Lifeguard hours are 10 am to 4:45 pm daily.

### Parking

The 109 parking spaces are metered and are serviced by the State Park Patrol Office located in Hampton Beach. Parking regulations are enforced 8:00 am to midnight. 20 spaces are leased to the Town of North Hampton to provide beach access to town residents.

### Town of Rye Sewer Easement

In 1990 a 25' sewer easement was granted to the Town of Rye for an 8" PVC forced main through the parking lot and it passes within 40' of the existing bath house. The sewage is sent to the Town of Hampton waste water treatment plant. At that time, Jenness State Beach (Town of Rye) was hooked up to the sewer line but North Hampton was not.

### Existing Septic System

In June of 2004 the septic system which is under the parking lot failed and it became necessary to operate the system like a holding tank. The Division contracted pumping the holding tank and the septage is taken to the Hampton Waste Water Treatment Plant by the contractor.

### Capital Budget Appropriation

The State's 2012/13 Capital Budget appropriated \$450,000 for a new building and connecting to the Rye force main sewer line. Meetings have taken place between DRED, the Towns of Hampton, Rye and North Hampton facilitated by Senator Stiles to reach agreement between the towns and state to allow the sewer connection.

### Proposed New Bathhouse

The new bathhouse, constructed in the style of the new facilities at Hampton Beach, will be located in approximately the same location as the current bathhouse. The design increases the footprint of the building and increases the number of toilet fixtures by two per side. It also includes dressing rooms and a family bathroom. An underground pump station will be constructed as part of the project to deliver the waste water to the sewer force main.

### How Much Sewage Produced

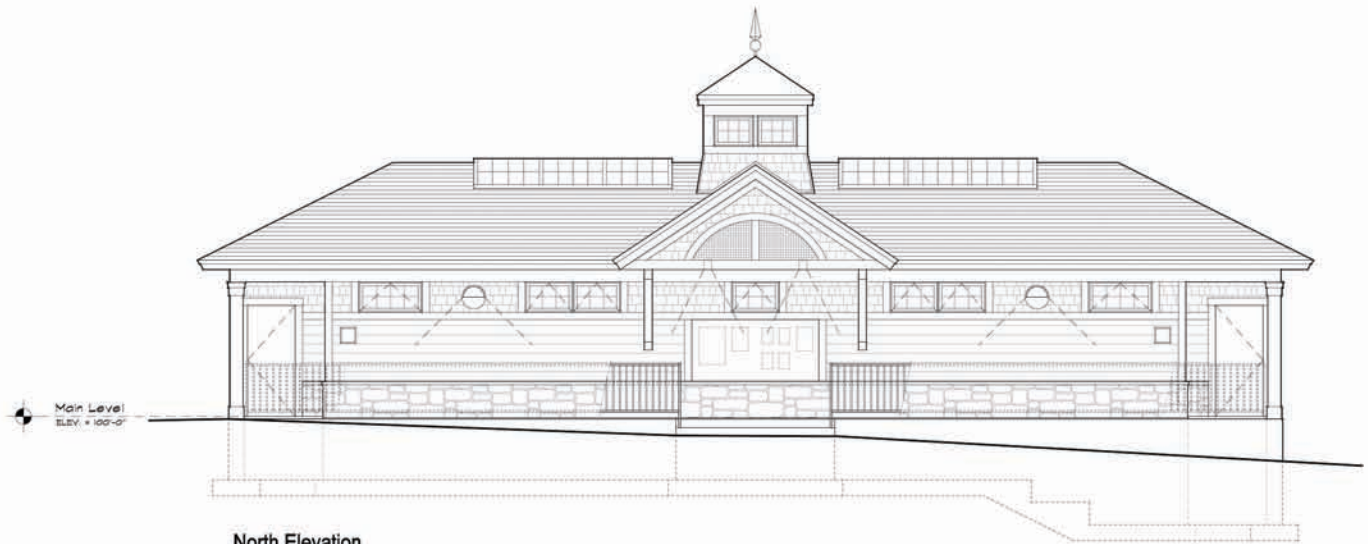
It is estimated the new facility will produce 410 gallons of effluent per day during the four month period it is operating. That amount is equivalent to effluent produced by one three bedroom house.

### Construction Schedule

Pending approval of the warrant article by the Town of Hampton voters, construction will be in phases to provide minimum disturbance to summer visitors. Phase I, which includes installation of the pump station, will begin in April and continue to mid-June. Phase II, bathhouse demolition will begin after Labor Day 2012 and reconstruction is expected to be complete by mid-May 2013.

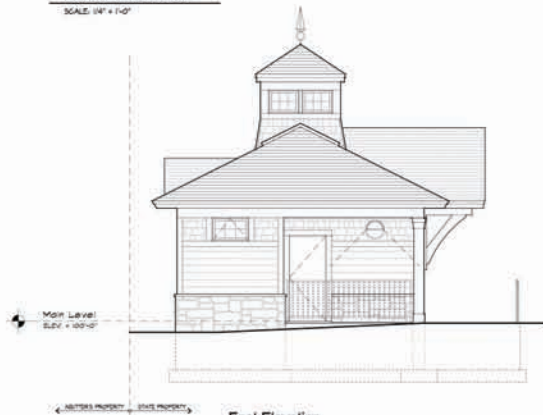
[nhstateparks.org](http://nhstateparks.org)





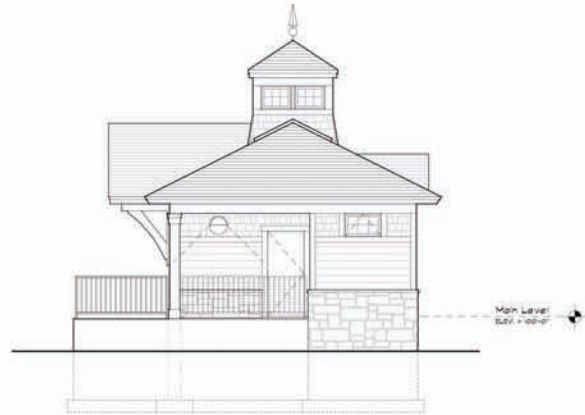
**North Elevation**

SCALE: 1/4" = 1'-0"



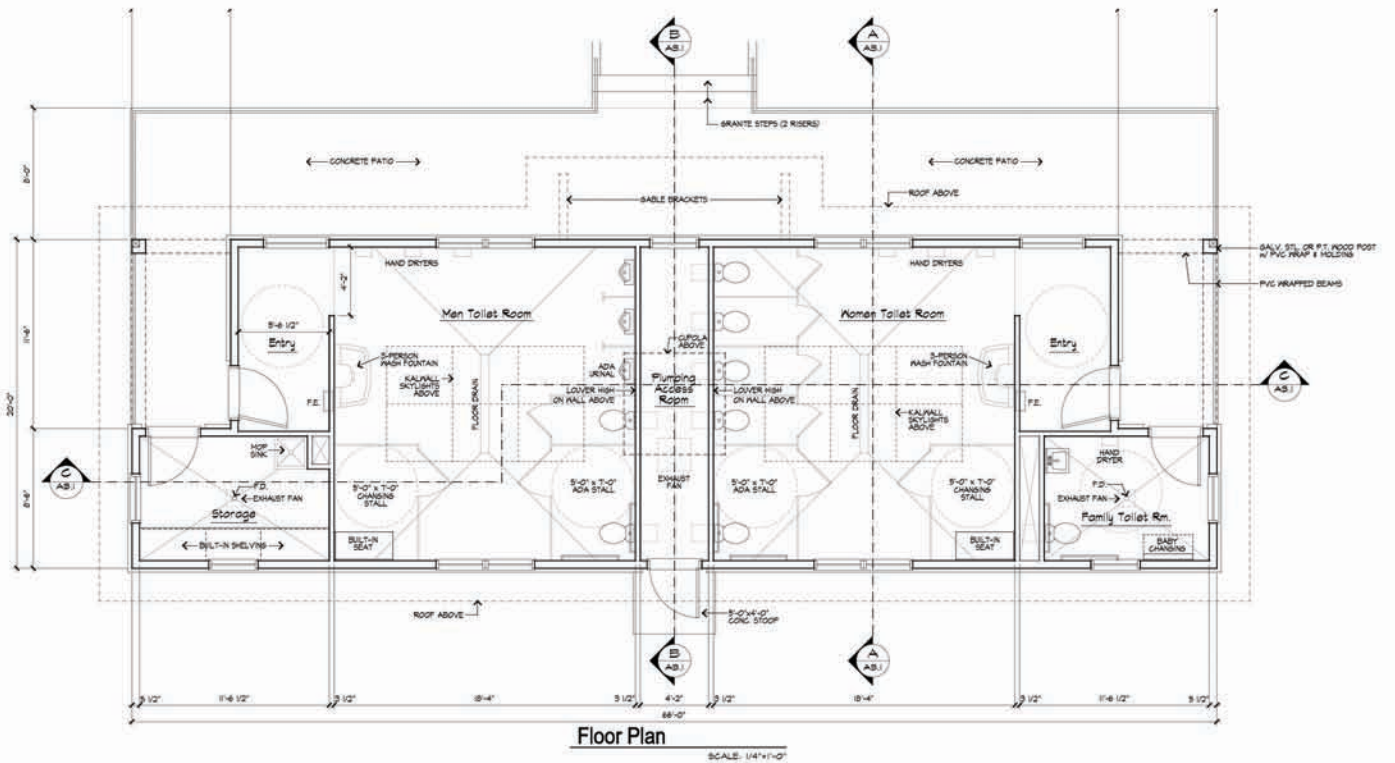
**East Elevation**

SCALE: 1/4" = 1'-0"



**West Elevation**

SCALE: 1/4" = 1'-0"



**Floor Plan**

SCALE: 1/4" = 1'-0"

Architect: Samyn-D'Elia Architects, P.A. | Civil Engineer: Vanasse, Hangen, Brustlin, Inc.  
 Mechanical/Electrical/Plumbing Engineer: Charles P. Buckley, P.E. | Structural Engineer: Foley Buhl Roberts & Associates