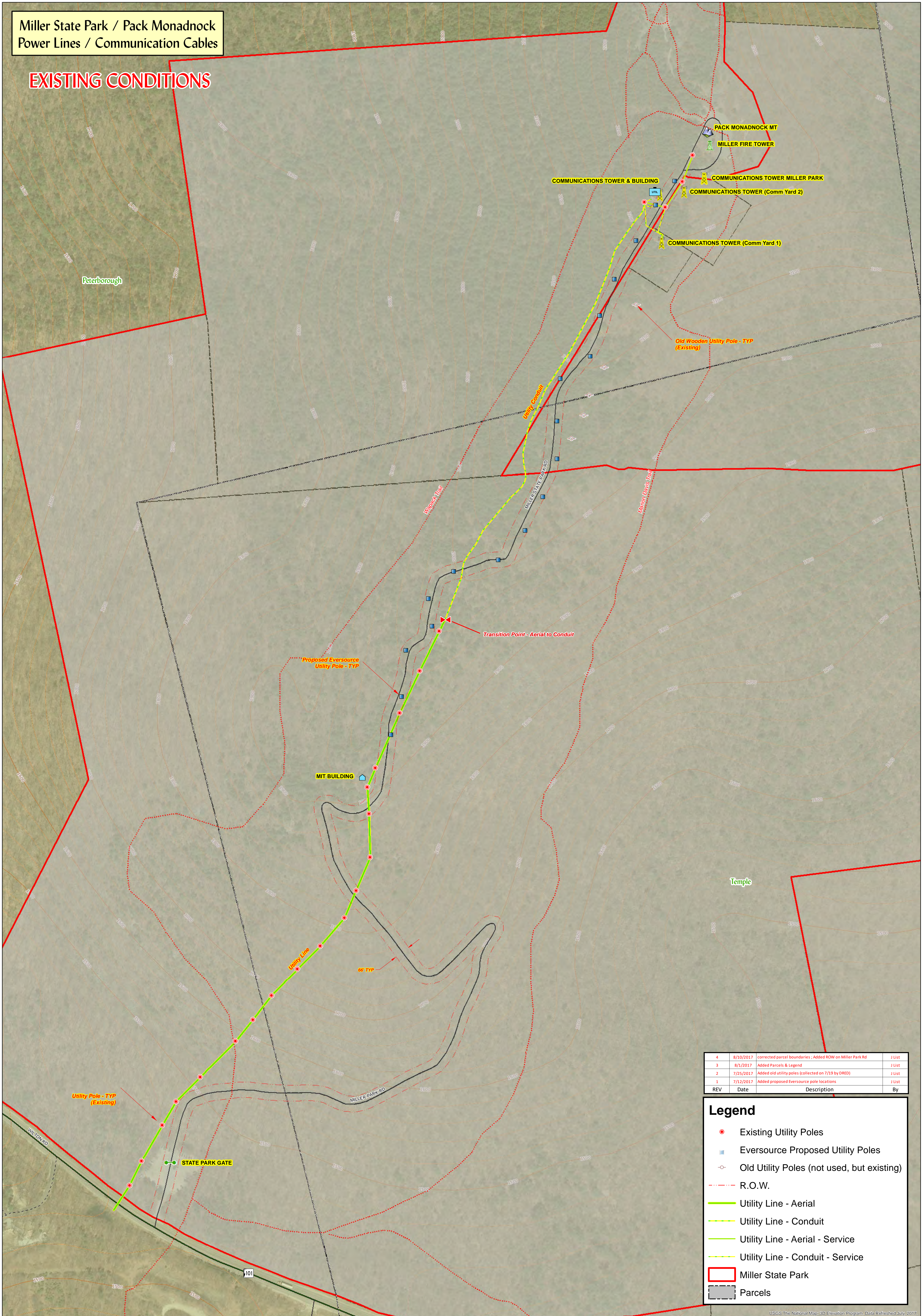


Miller State Park / Pack Monadnock
Power Lines / Communication Cables

EXISTING CONDITIONS



REV	Date	Description	By
4	8/10/2017	corrected parcel boundaries ; Added ROW on Miller Park Rd	J List
3	8/1/2017	Added Parcels & Legend	J List
2	7/25/2017	Added old utility poles (collected on 7/19 by DRED)	J List
1	7/12/2017	Added proposed Eversource pole locations	J List

Legend

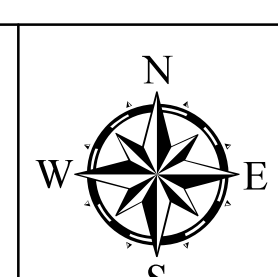
- Existing Utility Poles
- Eversource Proposed Utility Poles
- Old Utility Poles (not used, but existing)
- R.O.W.
- Utility Line - Aerial
- Utility Line - Conduit
- Utility Line - Aerial - Service
- Utility Line - Conduit - Service
- ▭ Miller State Park
- ▭ Parcels

USGS The National Map 3D Elevation Program. Data Refreshed July 2017.

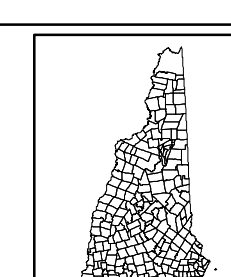
Prepared By:
NH Public Utilities Commission
Safety Division
GIS Section
March 9, 2017

Miller State Park / Pack Monadnock
Power Lines / Communications Cables

- Interstate
- US Route
- State Route
- Public Road
- Driveway/Private
- Ramp/Crossover
- Town Boundary
- County Boundary
- State Boundary
- Stream
- Water Feature
- Park/Forest
- Railroad
- Abandoned Railroad
- Hiking Trail
- Exit
- Mile Marker
- 2 Tenth Marker
- Gate



0 250 500 1000 1500
Feet
Scale = 1:4,000
Projected Coordinate System: NAD 1983 StatePlane NH FIPS 2800 Feet
Datum: NAD 1983



NOTES:
1. Vermont data was obtained from the Vermont Center for Geographic Information www.vcgis.org
2. Massachusetts data was obtained from the Office of Geographic and Environmental Information, Commonwealth of Massachusetts Executive Office of Environmental Affairs, www.mass.gov/gei
3. Maine data was obtained from Maine Geographic Information Systems http://mgis.maine.gov
4. This map portrays Google Sat Data : This layer contains data from http://mst.google.com/vt/yrnsd&w=1024&h=1024&level=15

FOR OFFICIAL USE ONLY