

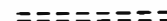


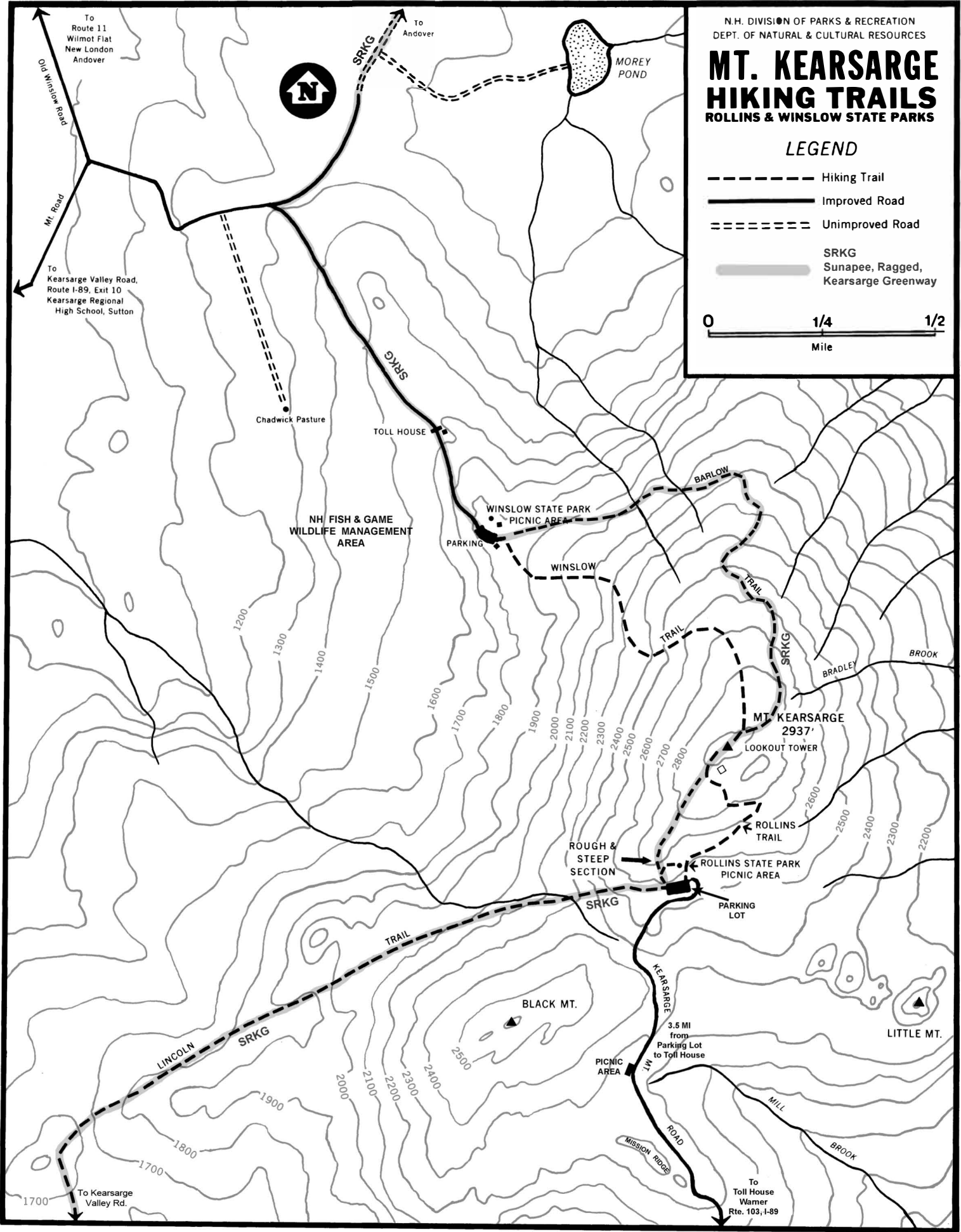


MT. KEARSARGE HIKING TRAILS

ROLLINS & WINSLOW STATE PARKS

LEGEND

-  Hiking Trail
-  Improved Road
-  Unimproved Road
-  SRKG
-  Sunapee, Ragged, Kearsarge Greenway



Winslow & Rollins State Parks

Hiking Information

The Winslow Trail, marked with red blazes, begins at the parking area at Winslow State Park. It climbs for 1.1 miles (1,100 vertical feet) through the forest and over bare granite ledge to the 2,937-foot summit.

The Barlow Trail, marked with yellow blazes, leaves from the parking area at Winslow and provides a longer, but more gradual ascent to the summit. Several vistas along the 1.7 mile trail afford views of the Andover area, Ragged Mountain, and Mount Cardigan.

The Rollins Trail, marked with white blazes, begins at the picnic area in Rollins State Park and follows the route of the old carriage road for ½ mile (300 vertical feet) to the summit.

The Lincoln Trail, begins at Kearsarge Valley Road, south of the golf course. The 5-mile trail traverses the northwest slope of Black Mountain as it climbs to the Rollins picnic area. From the picnic area, the remaining ½ mile ascends a rough, steep section for 200 yards before continuing on a gentler slope to the summit. The trail is blazed with white trapezoids.

Hiking Tips and Information

It is important to wear sturdy walking shoes and bring water and an extra jacket or sweater. Keep close tabs on children, as unforeseen hazards may exist or develop suddenly on mountain trails. Remember that mountain weather changes quickly and is more severe at the exposed summit. Hikers can quickly become disoriented and lose their way in dense fog. Be aware that rain at the trailhead may be snow or ice at higher elevations. When in doubt – turn back! The trails at the summit do not return to the same place. Make sure to descend the right trail to reach your planned destination. Plan sufficient time to return to the picnic areas before the posted closing time. Be aware that darkness falls more quickly in the forest than on the open summit.

A fire tower, operated by the New Hampshire Division of Forests and Lands, is open to the public when staffed. Fires are permitted in picnic area fireplaces only. Camping is not allowed on the mountain. A clean trail and summit make the mountain more enjoyable for all. Remember carry in – carry out, including biodegradables.

Volunteers work cooperatively with New Hampshire Division of Parks and Recreation staff to maintain the trails on Mt. Kearsarge. If you are interested in volunteering to help maintain trails for all to enjoy, contact the manager at Winslow or Rollins State Park.

Telephone Numbers

Rollins State Park Office (Warner, NH).....603.456.3808
Winslow State Park Office (Wilmot, NH).....603.526.6168

Rollins State Park
1066 Kearsarge Mountain Rd
Warner, NH 03278

Winslow State Park
475 Kearsarge Mountain Rd
Wilmot, NH 03287

NHSTATEPARKS.ORG

