

Jenness Beach Bath House

JENNESS BEACH STATE PARK
 RYE, NEW HAMPSHIRE
 NHBPW #80877A

SCHEMATIC DESIGN
SET NO. 1
 ISSUED 2-03-2016
 NOT FOR CONSTRUCTION

ABBREVIATIONS

A.C.	- ACOUSTICAL CEILING	HWH	- HOT WATER HEATER
A.F.F.	- ABOVE FINISH FLOOR	ICF	- INSULATED CONCRETE FORM
BITUM.	- BITUMINOUS	MACH.	- MACHINE
BLDG.	- BUILDING	MFR.	- MANUFACTURER
BD.	- BOARD	M.O.	- MASONRY OPENING
C.J.	- CONTROL JOINT	MAX.	- MAXIMUM
CL.	- CENTER LINE	MTL.	- METAL
CLO.	- CLOSET	MIN.	- MINIMUM
CLR.	- CLEAR	MT.(D)	- MOUNTED
CMU	- CONCRETE MASONRY UNIT	N.I.C.	- NOT IN CONTRACT
CONC.	- CONCRETE	N.T.S.	- NOT TO SCALE
CONT.	- CONTINUOUS	O.C.	- ON CENTER (CENTER TO CENTER)
CPT.	- CARPET	OPP.	- OPPOSITE
C.T.	- CERAMIC TILE	O.H.D.	- OVERHEAD DOOR
DTL.	- DETAIL	P.C.S.	- PIECES
DIA.	- DIAMETER	P.	- PLATE
DIM.	- DIMENSION	PLYWD.	- PLYWOOD
D.W.	- DISHWASHER	P.T.	- PRESSURE TREATED
DISP.	- DISPOSAL	PTED.	- PAINTED
DN.	- DOWN	R.	- RISER
D.F.	- DRINKING FOUNTAIN	RAD.	- RADIUS
DWG.	- DRAWING	R.D.	- ROOF DRAIN
EA.	- EACH	REINF.	- REINFORCED
E.J.	- EXPANSION JOINT	REPL.	- REPLACE
E.W.C.	- ELECTRIC WATER COOLER	RM.	- ROOM
ELEV.	- ELEVATION	R.O.	- ROUGH OPENING
EL.	- ELEVATOR	S.A.T.	- SUSPENDED ACOUSTICAL TILE
EQ.	- EQUAL	SCHED.	- SCHEDULE
EQUIP.	- EQUIPMENT	SHT.	- SHEET
EX.	- EXISTING	SIM.	- SIMILAR
EXIST.	- EXISTING	SIP	- STRUCTURAL INSULATED PANEL
EXP.	- EXPANSION	S.O.D.	- SLAB ON (METAL) DECK
EXT.	- EXTERIOR	S.O.G.	- SLAB ON GRADE
FE.	- FIRE EXTINGUISHER	SPEC.	- SPECIFICATION
FLR.	- FLOOR	SQ.	- SQUARE
F.D.	- FLOOR DRAIN	S.STL.	- STAINLESS STEEL
F.O.C.	- FACE OF CONC. (FOUNDATION)	STD.	- STANDARD
F.O.F.	- FACE OF (STUD) FRAMING	STL.	- STEEL
FRP.	- FIBERGLASS REINF. PLASTIC	STOR.	- STORAGE (ROOM)
GEN.	- GENERAL	SUSP.	- SUSPENDED
GL.	- GLASS	T.	- TREAD
GWB.	- GYPSUM WALLBOARD	T.B.D.	- TO BE DETERMINED
H.	- HIGH	TYP.	- TYPICAL
H.C.P.	- HANDICAPPED	V.B.	- VAPOR BARRIER
HGT.	- HEIGHT	V.I.F.	- VERIFY IN FIELD
H.M.	- HOLLOW METAL	VERT.	- VERTICAL
HORIZ.	- HORIZONTAL	V.C.T.	- VINYL COMPOSITION TILE
		WD.	- WOOD

NOTATION SYMBOLS

ROOM IDENTIFICATION		ROOM NUMBER (101)
DOOR MARKS		DOOR NUMBER (102)
WINDOW MARK		WINDOW TYPE (A)
INTERIOR ELEVATION TAGS		ELEVATION # SHEET #
WALL SECTION TAG		SECTION # SHEET #
BUILDING SECTION TAG		SECTION # SHEET #
SURFACE ELEVATION MARK		100'-0"
ENLARGED DETAIL TAG		DETAIL # SHEET #

CODE INFORMATION

2009 INTERNATIONAL BUILDING CODE (IBC)

GENERAL BUILDING INFORMATION: (NUMBERS REFER TO CHAPTERS AND SECTIONS IN THE IBC)

502 USE GROUP CLASSIFICATIONS:	B - BUSINESS
502.1 BUILDING AREAS, PROPOSED:	SINGLE LEVEL 1,402 SQ. FT. GROSS
502.1 BUILDING HEIGHT, PROPOSED:	18' FROM GRADE TO TOP OF MAIN ROOF, 23' FROM GRADE TO TOP OF CUPOLA
503 AREA LIMIT:	7,200 SQ.FT. PER FLOOR
503 HEIGHT LIMIT:	TWO (2) STORIES, 30' HIGH

CHAPTER 6 CONSTRUCTION CLASSIFICATION
 PROPOSED STRUCTURE: TYPE 5B

TABLE 601 REQUIRED FIRE RESISTIVE RATINGS OF STRUCTURAL ELEMENTS
 PROPOSED TYPE 5B STRUCTURAL FRAME (COLUMNS, GIRDERS, TRUSSES, WALLS, FLOORS & ROOFS): 0 HOUR

2009 NFPA 101 LIFE SAFETY CODE (LSC)

OCCUPANCIES:	BUSINESS (CHAPTER 9B)
OCCUPANCY LOAD:	NO REQUIREMENT FOR TOILET ROOMS.
REQUIRED FIRE SEPARATION:	1-HOUR WALL BETWEEN STORAGE SPACES & OTHER SPACES

ACCESSIBILITY CODE

THIS BUILDING SHALL COMPLY WITH THE PROVISIONS OF THE NH ACCESSIBILITY CODE WHICH REFERENCES 2010 ADA STANDARDS FOR ACCESSIBLE DESIGN BY THE U.S. DEPT. OF JUSTICE.

ENERGY CODE

THIS BUILDING SHALL COMPLY WITH THE 2009 INTERNATIONAL ENERGY CONSERVATION CODE.

DRAWING INDEX

ARCHITECTURAL DRAWINGS

A.1	Floor Plan
A2.1	Exterior Elevations
A2.2	Exterior Elevations
A3.1	Building Sections

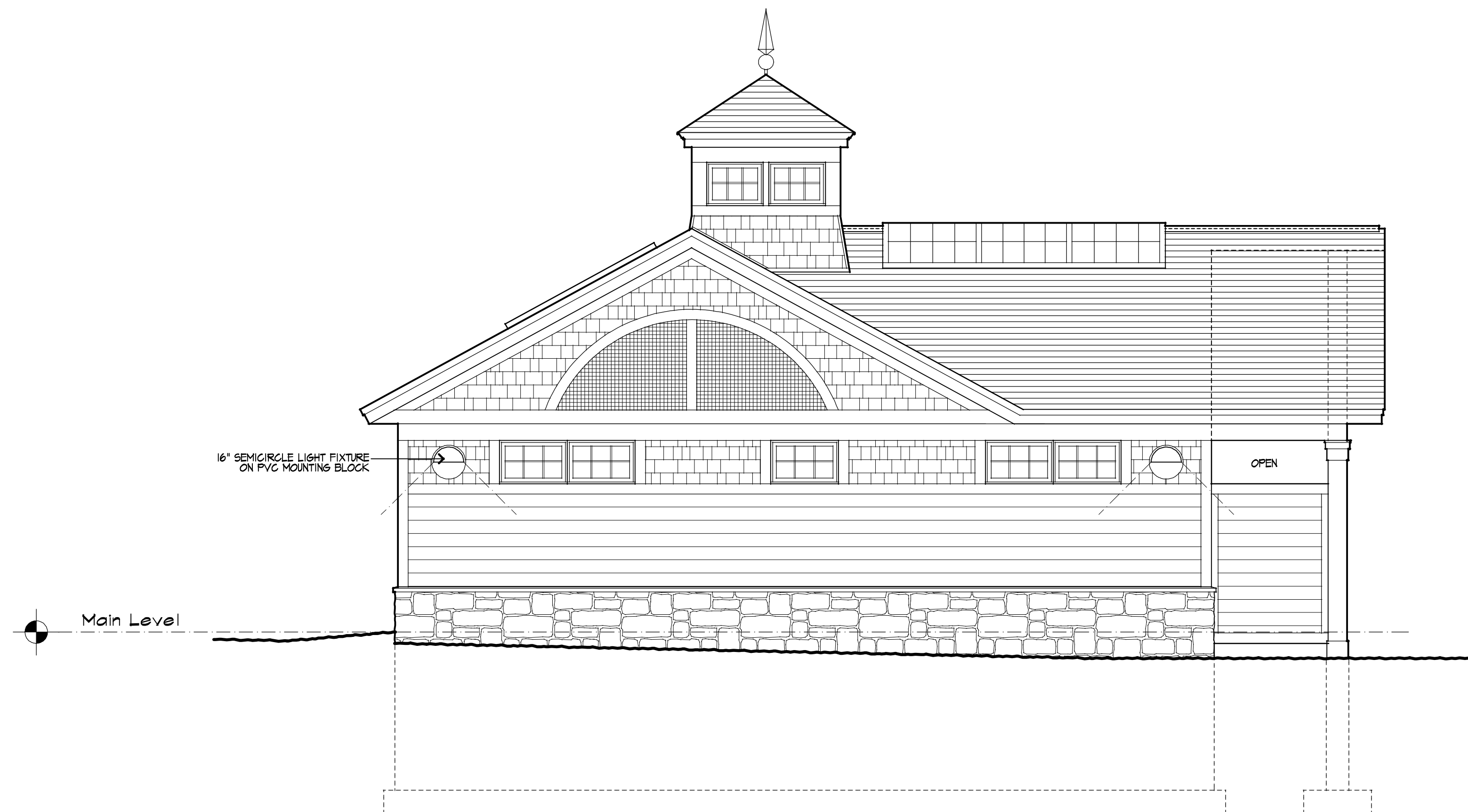
Client:
 State of New Hampshire
 Department of Resources & Economic Development
 Division of Parks and Recreation
 172 Pembroke Road, P.O. Box 1856
 Concord, NH 03302
 (603) 271-3556

Architect:
 Samyn-D'Elia Architects, P.A.
 P.O. Box 1254
 Ashland, N.H. 03217
 (603) 968-7133

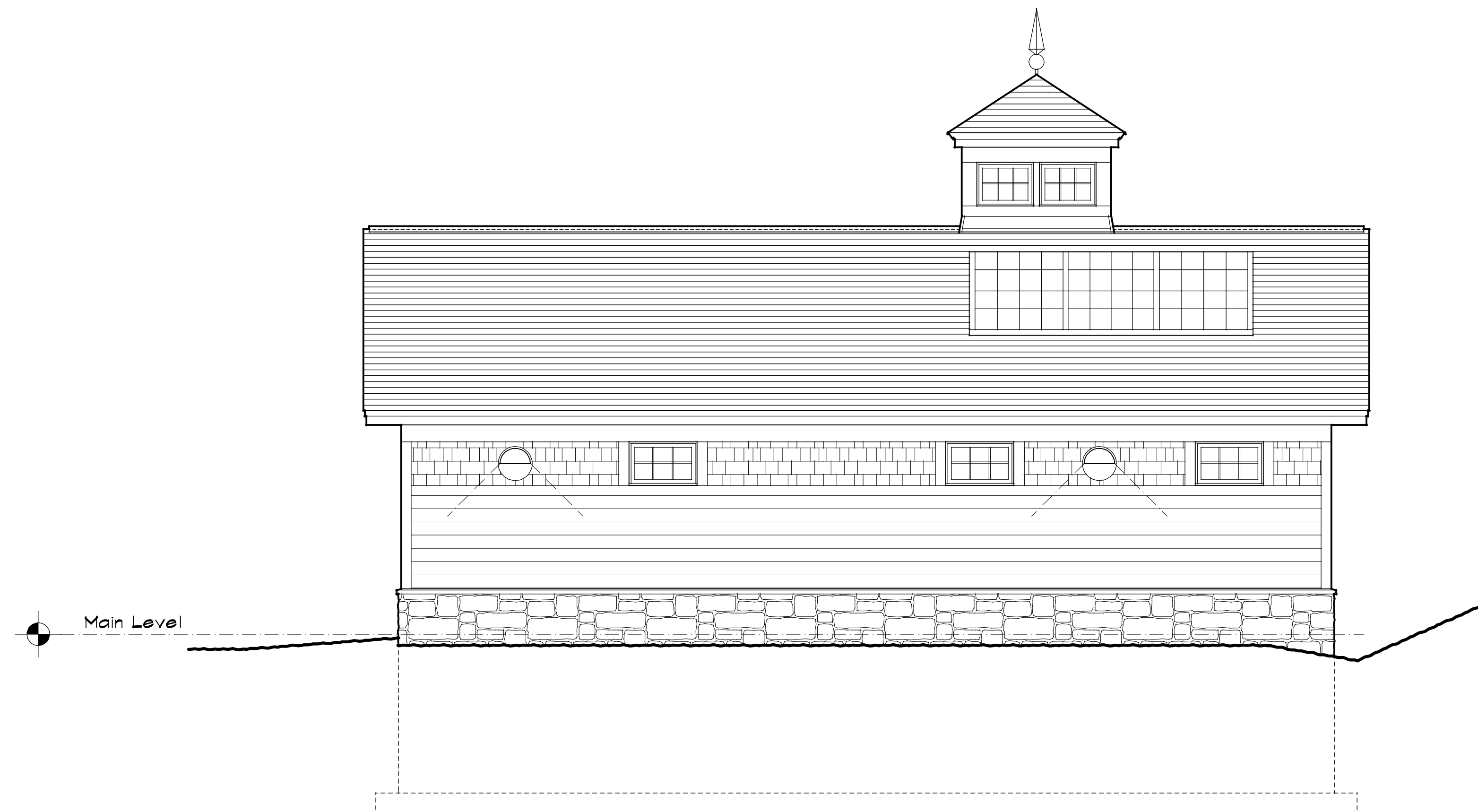
Civil Engineer/Surveyor:
 Vanasse, Hangen, Brustlin, Inc.
 6 Bedford Farms Drive, Suite 607
 Bedford, NH 03110
 (603) 644-0888

Mechanical/Electrical/Plumbing Engineer:
 Charles P. Buckley, P.E.
 500 Depot Street
 Rumney, NH 03266
 (603) 786-9992

Structural Engineer:
 Foley Buhl Roberts
 & Associates, inc.
 500 Commercial Street
 Manchester, NH 03101
 (603) 622-4578



South Elevation
SCALE: 1/4" = 1'-0"



West Elevation
SCALE: 1/4" = 1'-0"



**Division of Parks
and Recreation**
New Hampshire
Department of Resources
and
Economic Development

Administrator
**Division of Public Works,
Design and Construction**
New Hampshire
Department of
Administrative Services

Civil Engineer / Landscape Architect / Surveyor



Architect
**SAMYN - D'ELIA
ARCHITECTS, P.A.**
20 Main Street, Ashland, NH 03217
(603) 968-7133 / fax: (603) 968-3057
sarchitects.com

Structural Engineer
**FoleyBuhlRoberts
& ASSOCIATES INC**
structural
engineers
T 603-622-4578 F 603-622-4593 www.fbr.com 500 Commercial Street
Manchester NH 03101

Mechanical, Electrical & Plumbing Engineer
CEPE
CHARLES P. BUCKLEY
PROFESSIONAL ENGINEER
500 Depot St. Rumney, NH
T 603-251-9922 F 603-251-9923

Drawing Set Log			
No.	Revision	Date	Appvd

Designed by _____ Drawn by MR _____ Checked by WD _____
CAD checked by _____ Approved by _____

Scale AS NOTED

Project Title and Location
**Jenness State Beach
Redevelopment Project**
2280 Ocean Boulevard
Rye, New Hampshire 03870

Issued for
Schematic Design
Issued for Review: Feb. 3, 2016

Project Number NHBPW - 80877A VHB - 52348.05 SDA - 1535	Stamp
---	-------

Drawing Title
**Exterior
Elevations**

Drawing Number
A2.2

