



Owner
Division of Parks and Recreation
New Hampshire
Department of Resources and Economic Development

Administrator
Division of Public Works, Design and Construction
New Hampshire
Department of Administrative Services

Civil Engineer / Landscape Architect / Surveyor
vhb
2 Bedford Farms Drive
Suite 200
Bedford, NH 03110
603.391.3900

Architect
SAMYN - D'ELIA ARCHITECTS, P.A.
20 Main Street, Ashland, NH 03217
(603) 968-7133 / fax: (603) 968-3057
sdarchitects.com

Structural Engineer
FoleyBuhlRoberts & ASSOCIATES INC
structural engineers
T 603-622-4578 F 603-622-4593 www.frb.com
500 Commercial Street
Manchester NH 03101

Mechanical, Electrical & Plumbing Engineer
CEPB
CHARLES P. BUCKLEY
PROFESSIONAL ENGINEER
500 Depot St., Manchester, NH
T: 603.289.0900 F: 603.289.2100

Drawing Set Log

No.	Revision	Date	Appvd.

Designed by _____ Drawn by MR Checked by WD
CAD checked by _____ Approved by WD
Scale AS NOTED

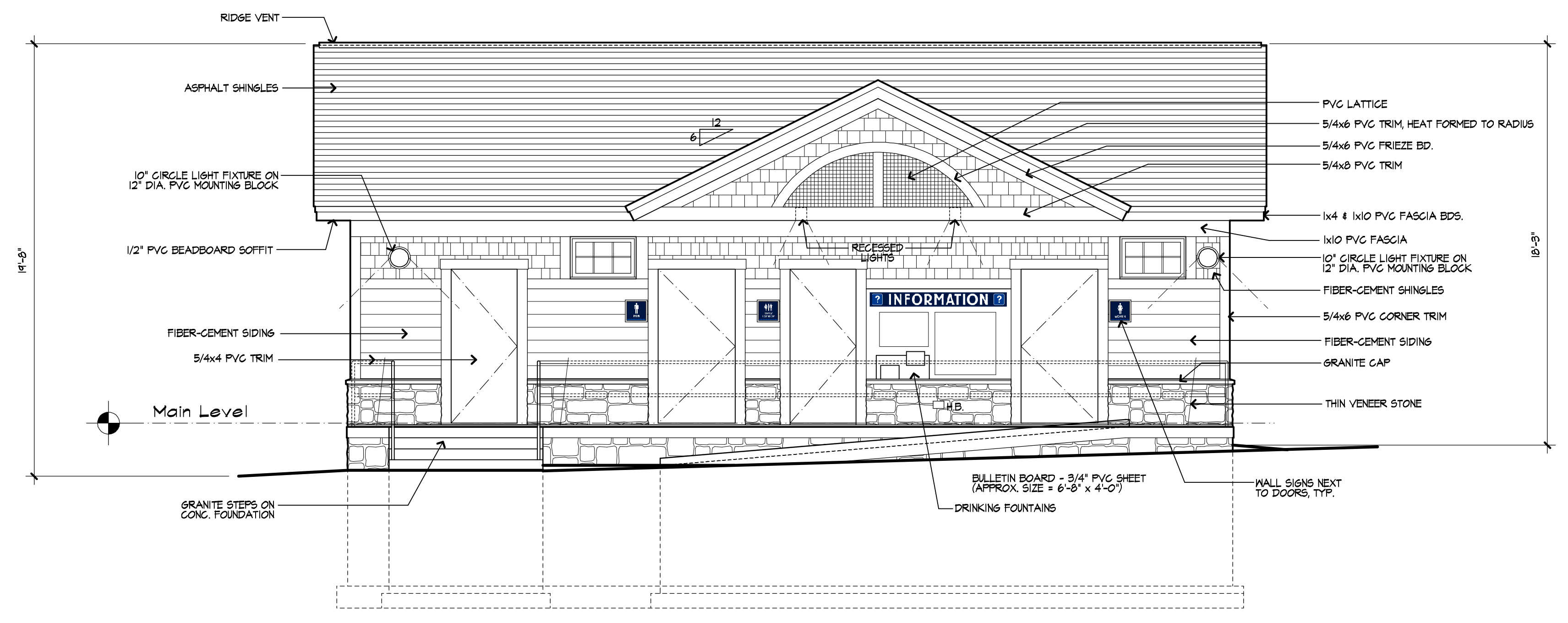
Project Title and Location
Jenness Bathhouse Replacement and Parking Lot Improvements
2280 Ocean Boulevard
Rye, New Hampshire 03870

Issued for
Progress Sheet - Redesign

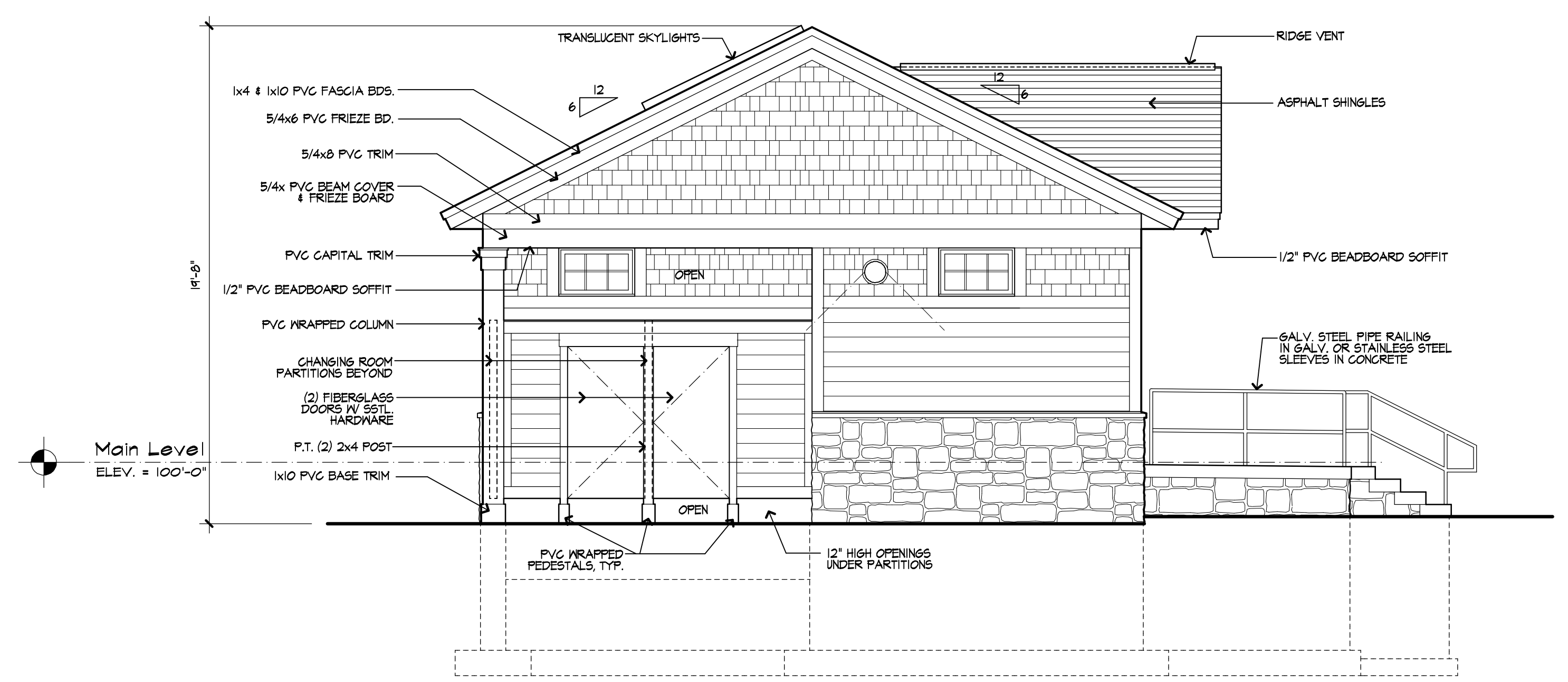
Project Number NHBPW - 80877B VHB - 52348.05 SDA - 1703	Stamp
------------------------------------------------------------------	-------

Drawing Title
Exterior Elevations

Drawing Number
A2.1



North Elevation (WITH TYPICAL NOTES)
SCALE: 1/4" = 1'-0"



East Elevation
SCALE: 1/4" = 1'-0"