



GEI



Consultants

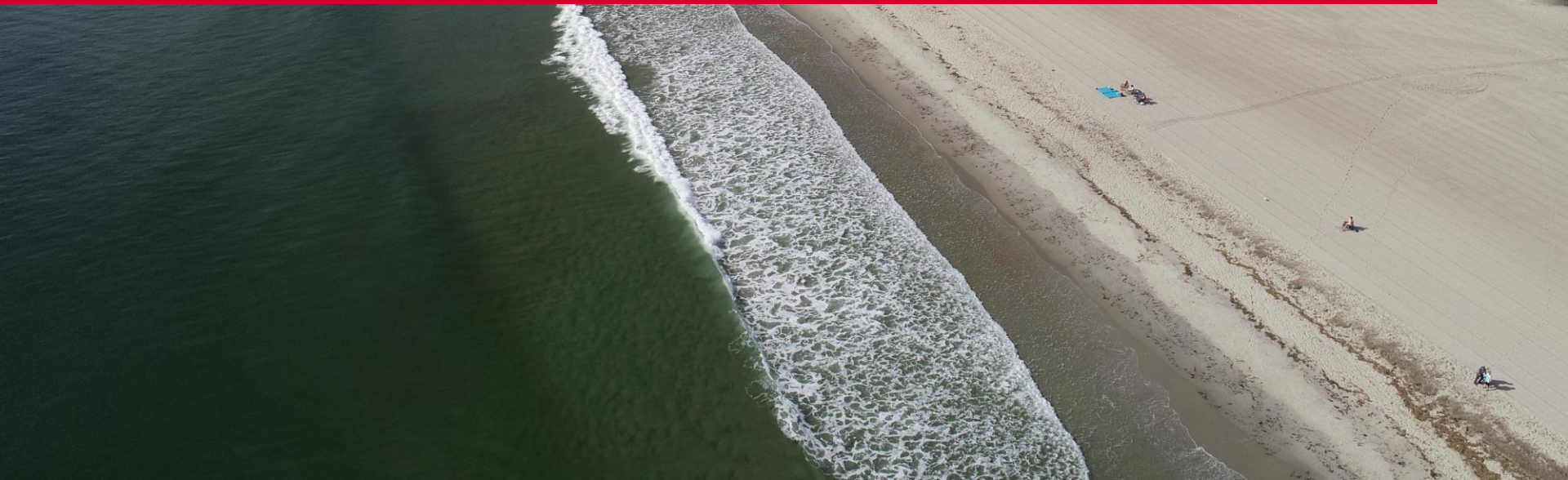
GPI

Hampton Beach State Park Accessibility Feasibility Study

Jurisdictions Focus Group | | August 13, 2024

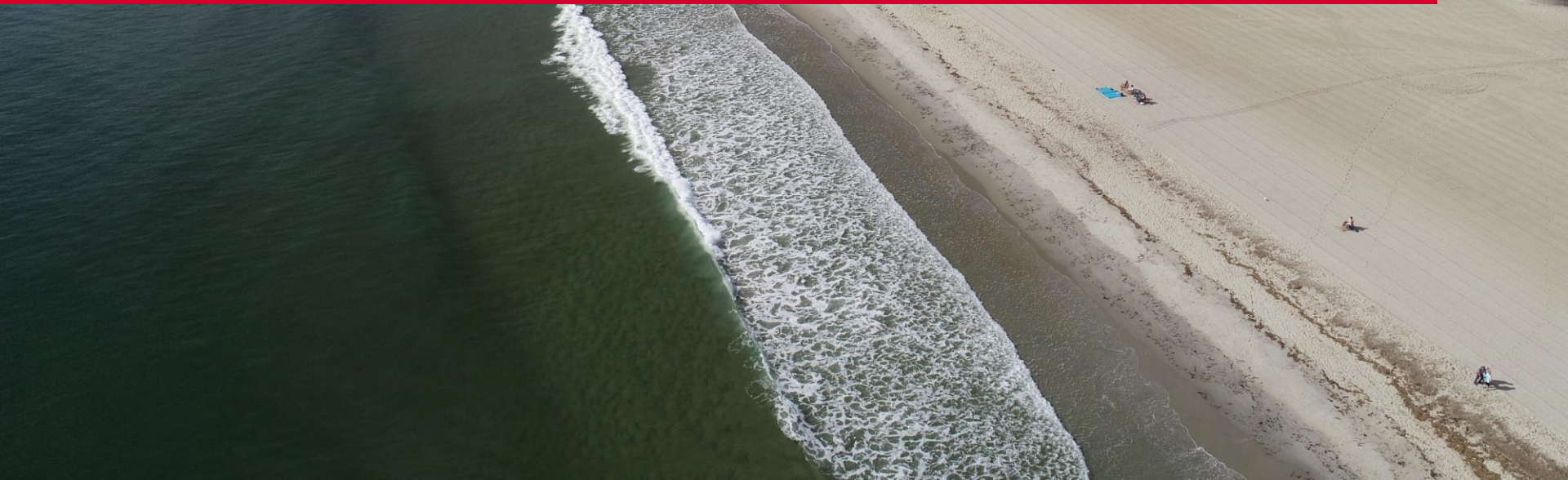


Introductions





Brief Project Status



Project Team



NH State Parks

Johanna Lyons



GEI Consultants (Prime)

Travis Pryor

Alison Brady

GPI

GPI (Subconsultant)


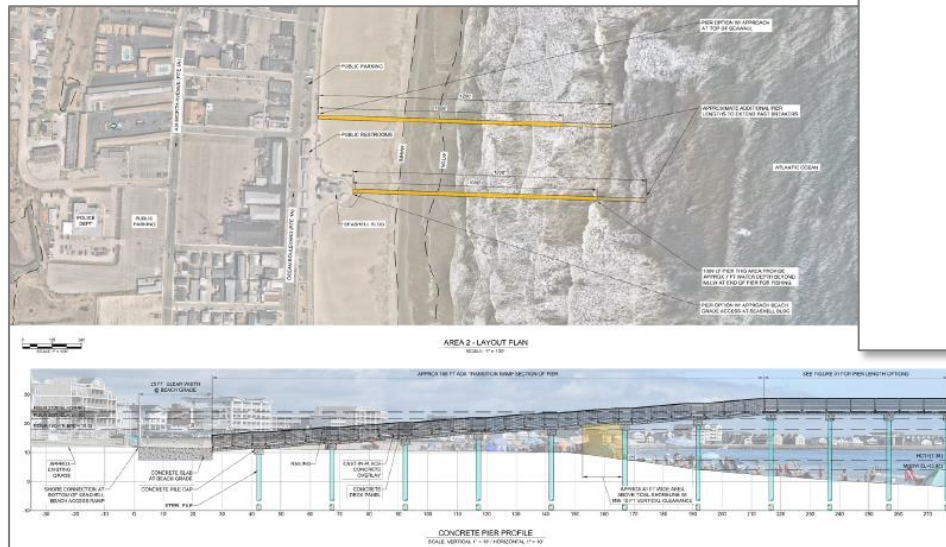
Robert White

Nicole Rogers

**+ Project Advisory
Committee**

Project Background

- Stems from 2022 Hampton Beach New Pier Feasibility Study
- 2023 Appropriation to conduct a Feasibility Study focused on improving accessibility for people with disabilities



GEI
Consultants

Consulting
Engineers and
Scientists

**Feasibility Study
Hampton Beach New Pier**
Hampton, New Hampshire


Submitted to:
Hampton Beach Area Commission
100 Wampanoag Road
Hampton, NH 03842

Submitted by:
GEI Consultants, Inc.
5 Mill Street
Portland, ME 04101
207.797.8901

October 28, 2022
Project 2202415

Daniel B. Robbins
Daniel B. Robbins, P.E.
Sr. Project Manager

Timis Fryor
Timis Fryor, RLA / LEED-AP
Sr. Project Manager



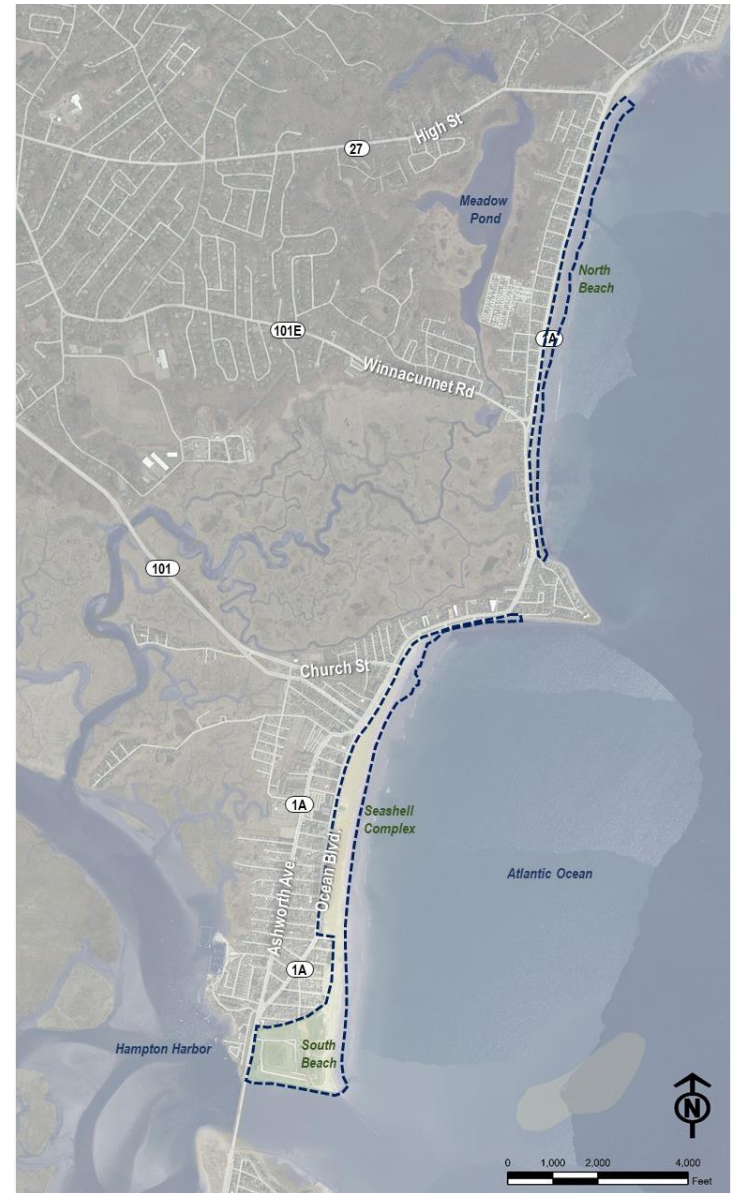
Project Area

Hampton Beach State Park (South Beach, Seashell, North Beach)

- **Facilities** (walkways, ramps, parking, pavilion, campground etc.)
- **Amenities** (benches, playground, changing rooms, firepits etc.)
- **Programs** (adaptive equipment and gear, instruction, support for activities)



Compliant + Meaningful Spaces



How do we make Hampton Beach State Park accessible?

PARKING

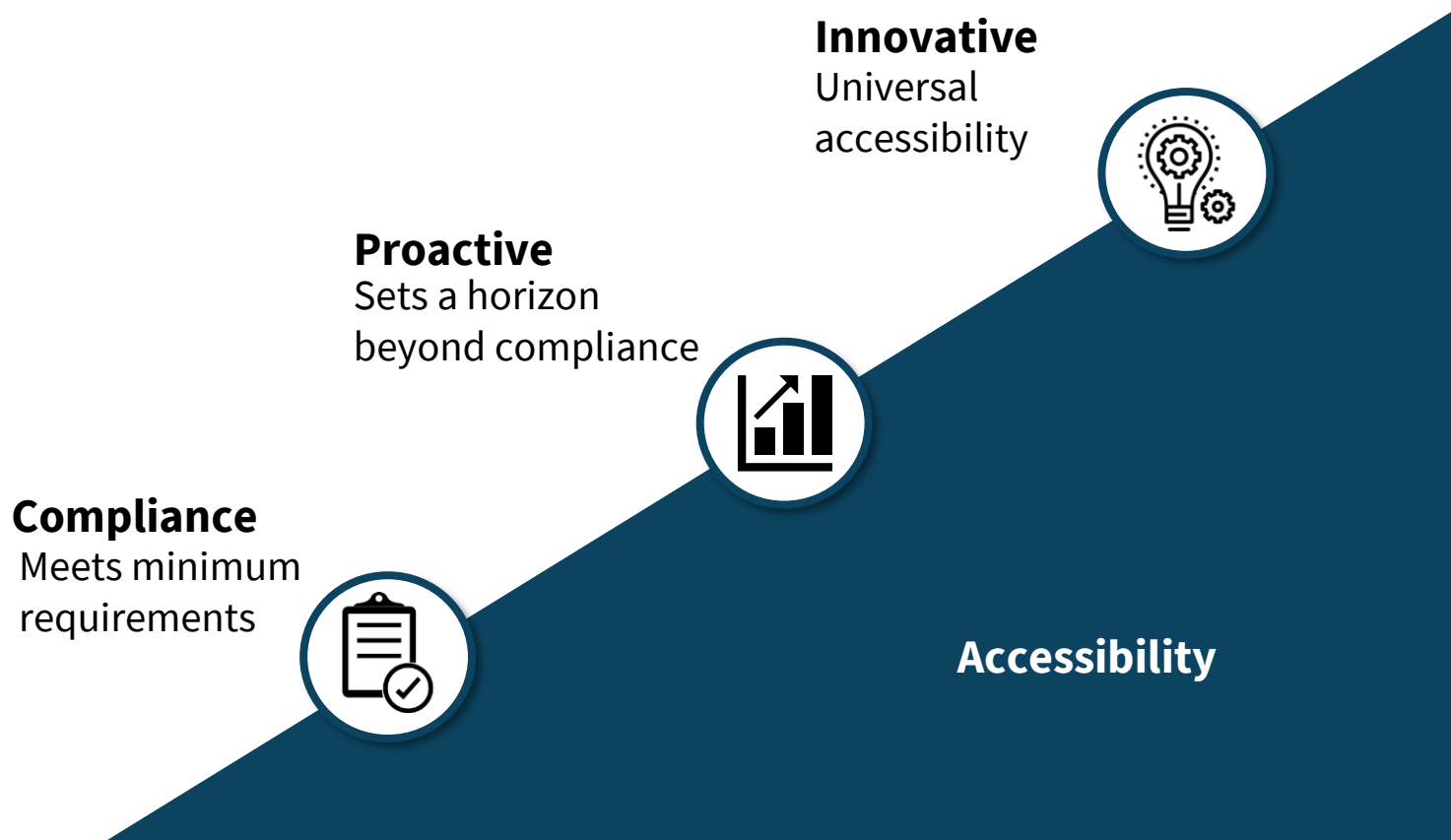
FACILITIES /
PROGRAMS /
EVENTS

BEACH



... and at all times? Regardless of season or time

What are we striving for?



This study provides the opportunity to identify ways make the area compliant but also to set an example of accessibility in the Northeast.



What are we hearing thus far?



Ongoing Surveys

Hampton Beach State Park Accessibility Feasibility Study

New Hampshire State Parks is looking at ways to improve the enjoyment of facilities, programs, and services for all visitors regardless of individual abilities. Your input is essential! Please tell us your ideas and concerns regarding accessibility of the facilities, programs and amenities provided at Hampton Beach State Park.

When responding to the following questions please consider experiences including, but not limited to, physical access, visual perception, auditory perception.

Facilities / Amenities

Are there State Park facilities and/or amenities (i.e., boardwalk, seating areas, beach access, water access, bathhouses, events, performances, seating areas, parking spaces, etc.) that you have had difficulty using, operating or understanding?

Yes

No

Please provide information about facilities and/or amenities that you have had difficulty using:

Parking

Beach Access
(i.e., ramps, mats)

Bathing Facilities
(toilets, showers,
change rooms)

132

**TOTAL
RESPONSES**



***Also provided in French**

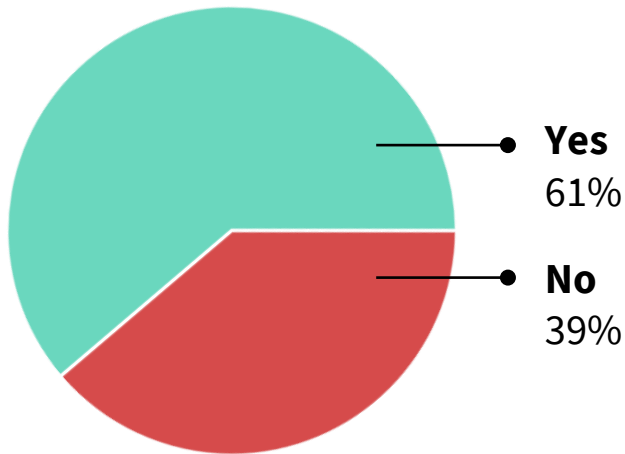
**Take the survey
today!**



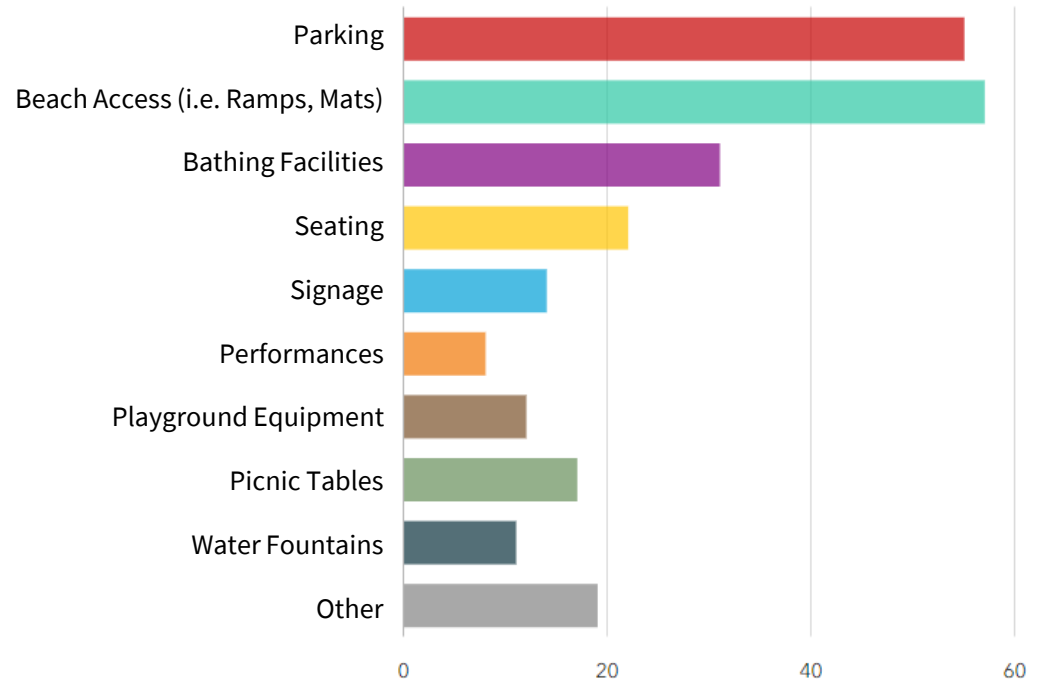
Facilities and/or Amenities

(i.e., boardwalk, seating areas, beach access, water access, bathhouses, events, performances, seating areas, parking spaces, etc.)

Are there State Park facilities and/or amenities that you have had difficulty using, operating or understanding?



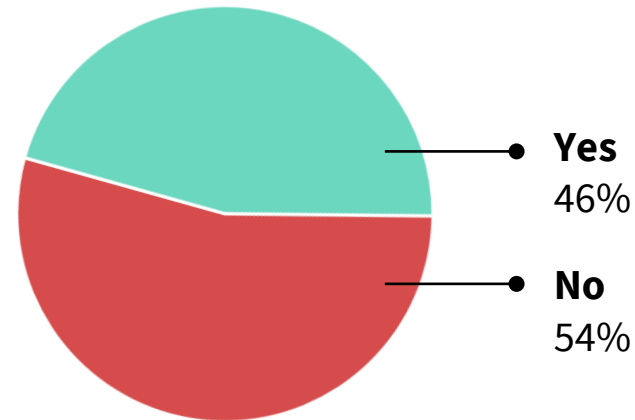
Please provide information about facilities and/or amenities that you have had difficulty using:



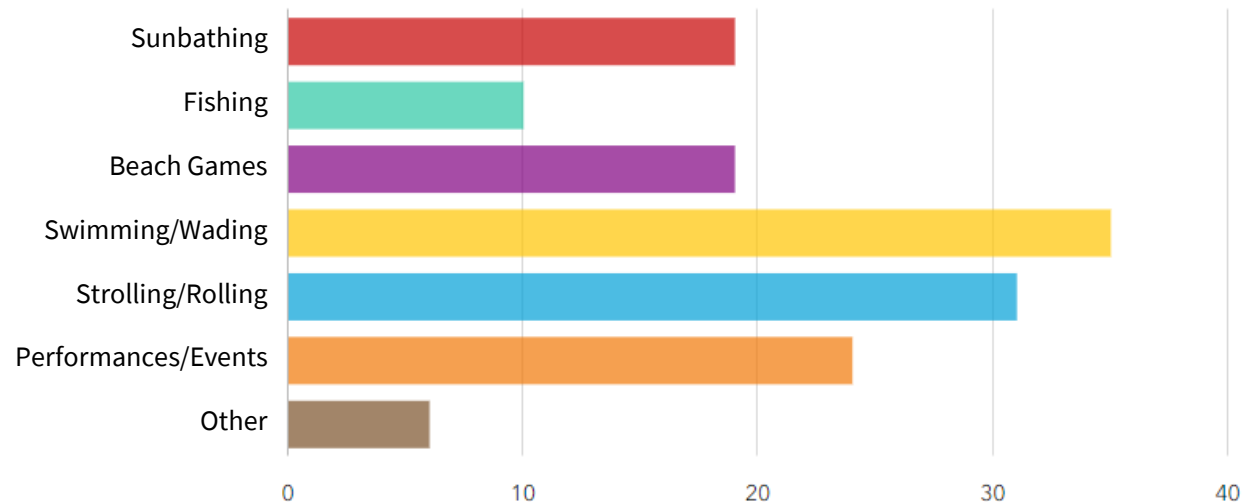
Recreational Activities, Programs, Events, Performances

(i.e., sunbathing, swimming, wading, fishing, picnicking, strolling/rolling, beach games, fireworks, events, performances etc.),

Have you had difficulty participating in recreational activities or programs, events and/or performances at HBSP?

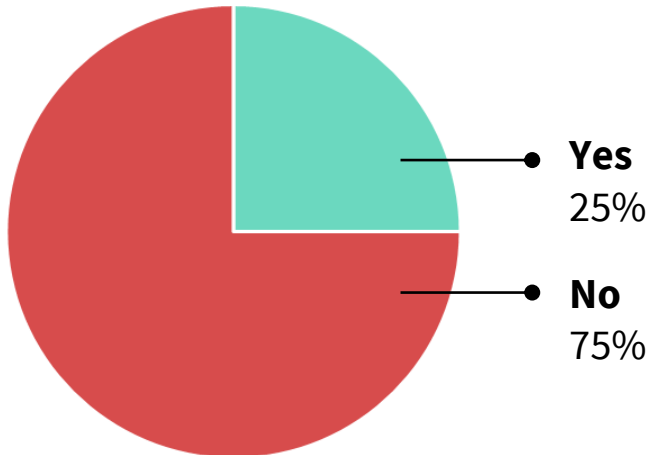


Please provide information about recreational activities or programs, events and/or performances that you have had difficulty using:

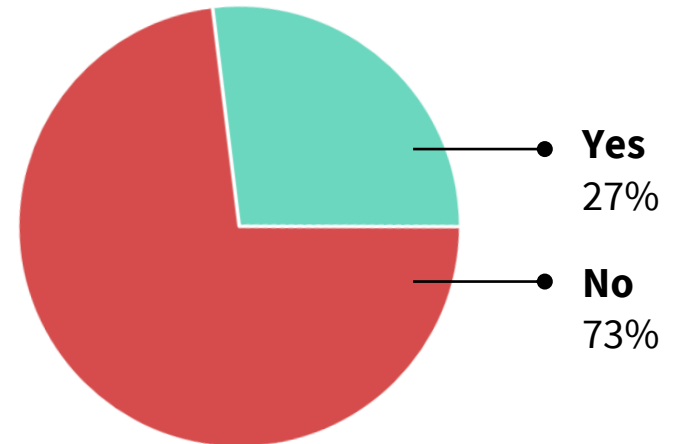


Obtaining Information

Have you had difficulty obtaining information about facilities, programs, and/or events at Hampton Beach State Park?



Do you know how to request accommodations to provide access to facilities, programs, and amenities (i.e., adaptive equipment such as beach wheelchairs, assistive listening systems, etc.) at Hampton Beach State Park?



Public Outreach

- **Public Events**
 - **Community Meeting – May 22**
 - **Open House Events – May 26/27**
 - **BeachAbility - Thursday, July 25**
 - **Pop-Up Event - Saturday, July 27**



Focus Groups

Focus Group Meetings Scheduled – Held Virtually Throughout July

Discussion Point – Potential Opportunities

Can you share any innovative solutions or best practices that have proven successful in improving park/event accessibility and inclusivity?

Adaptive Equipment

- What types of adaptive equipment or accommodations do you think would significantly improve the accessibility and experience of events and recreation for individuals with disabilities?
- How can adaptive beach equipment be enhanced to better meet the diverse needs of users?

Event Logistics

- What practical improvements can be made to enhance access to events at HBSP?
- What practical improvements can be made to mitigate environmental factors like tides and maintenance challenges to ensure consistent accessibility?

31:11

31:11 / 1:11:03

GEI Consultants GPI

Hampton Beach State Park Accessibility Feasibility Study

Disabilities Focus Group | July 15, 2024

04:43 / 46:33

GEI Consultants GPI

Hampton Beach State Park Accessibility Feasibility Study

Older Adults Focus Group | July 23, 2024

1:33 / 1:06:02

Discussion Point

Please describe the services provided for accessing Hampton Beach.

What does ridership look like in terms of volume and demographics?

Do you currently closely coordinate with NH Parks Staff or Town?

Would your provider consider additional service to/from Hampton Beach? What are potential pros/cons?

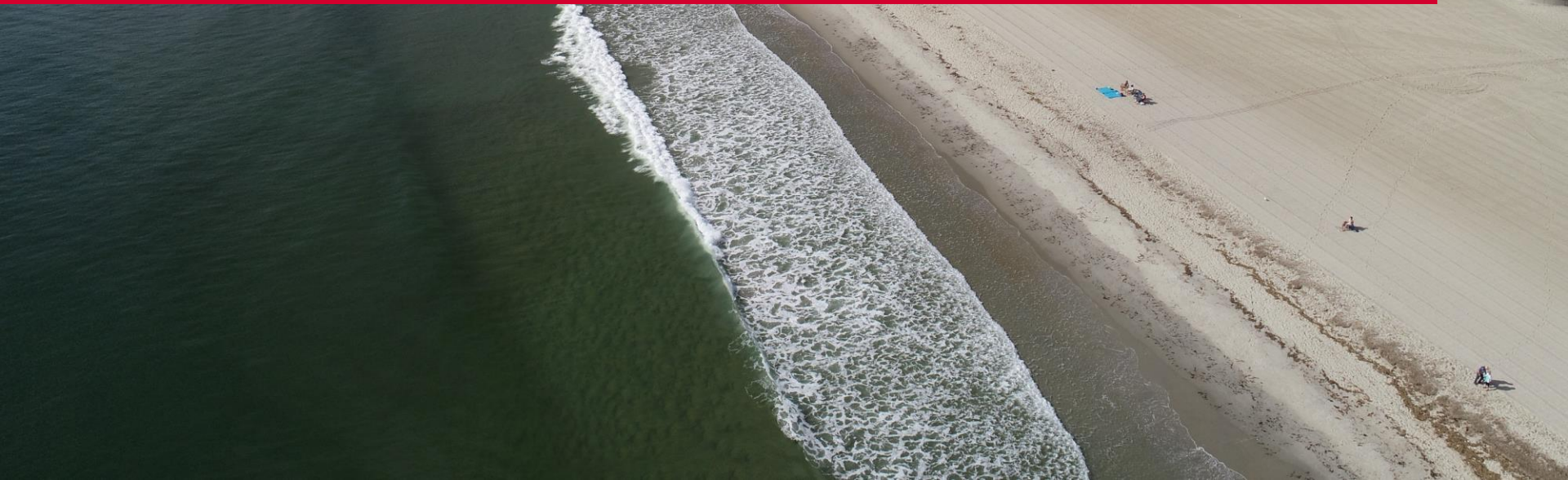
Would your provider consider additional stops throughout Hampton Beach State Park? (North Beach, South Beach)

In your opinion, do you think implementing a local shuttle service to expand access to offsite parking areas would be beneficial/feasible?

34:37 / 59:50



Barriers/Opportunities + Discussion



General Feedback Themes

Parking

- Not enough to meet demand
- Dimensional standards
- Van accessible
- Centrally located

Access Points

- Ramps preferred over stairs
- Accessible points centrally located
- Desire for additional accessible access point South Beach and north Beach
- Current railings corroded

Sidewalks/Ramps

- Compliance issues north of Marine Memorial

Facilities/Amenities

- Desire for more accessible features (seating, shade, accessible bathrooms/changing rooms, etc.)

Beach/Water Access

- Mobi mats do not extend far enough
- Equipment outdated and insufficient

Events/Recreation

- Hard to navigate crowded events
- No viewing areas
- No accessibility plan
- Playground Inaccessible

Information

- Need for transparent information regarding accessible features/services

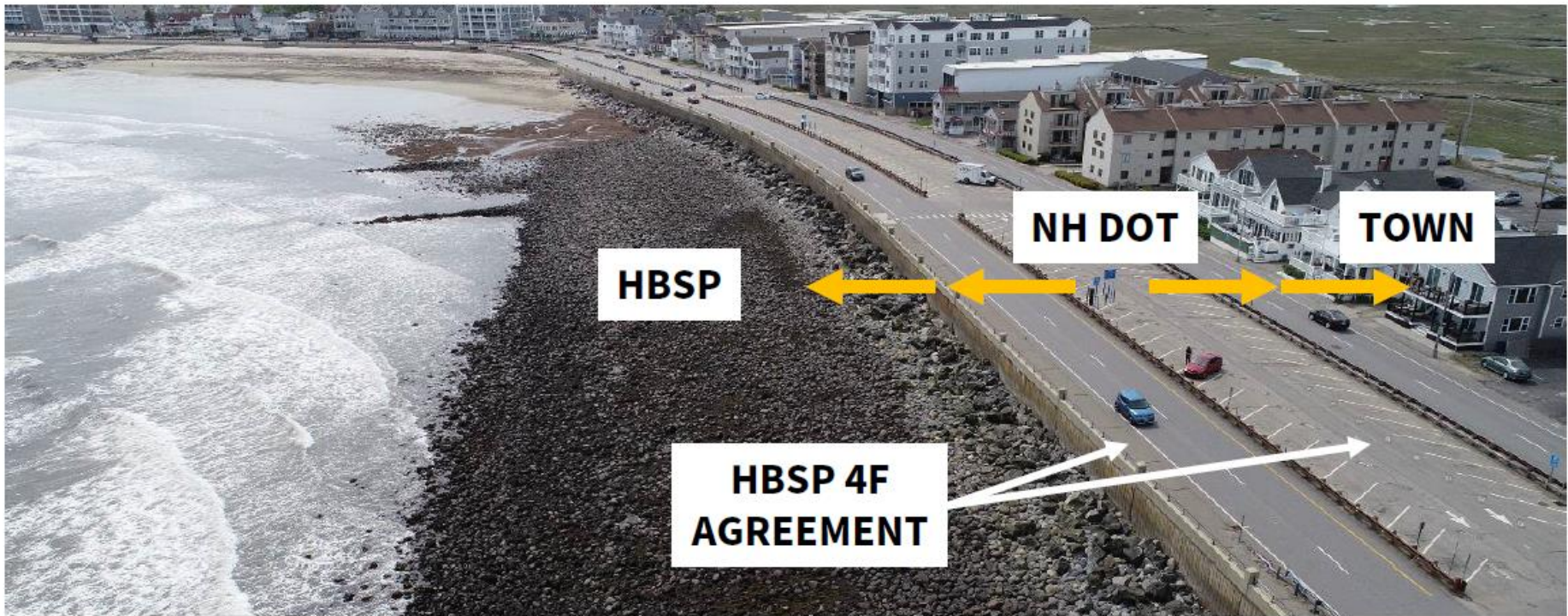
Signage

- Need for wayfinding to accessible feature/services
- Universally accessible signage throughout HBSP

Accessible Community

- Accessibility is a community responsibility
- Need for social awareness

Accessible Community is a Shared Responsibility



General Recommendations





Discussion Point

Are there any other major challenges that individuals with disabilities, older adults, and their families face in visiting HBSP?

What is the most critical barrier? In other words, if you could allocate funds to one improvement, what would make the biggest difference?



Discussion Point

Village District

- What practical improvements can be made to enhance access to events at HBSP?
- We want everyone to be able to comfortably enjoy concerts/performances/events. Is there an opportunity to partner with NH State Parks to implement accessibility plans to enhance events?
- Are there any plans to update the playground to accessibility standards?



Discussion Point

Town / DOT

- We understand that plans are in plans for Route 1A. Can we get an update on where that process stands? Opportunities to increase accessible parking spaces? / Provide recommendations to consider?
- Has the Town conducted an ADA transition plan?
- Are there any plans to consider accessibility improvements on western sidewalk?



Discussion Point – Current Barriers

Business Owners

- What accessibility features does your business currently offer to accommodate individuals with disabilities?
- Are there specific areas or amenities where accessibility improvements could be made?
- What are the main barriers or challenges you face in making your business more accessible?



Discussion Point – Potential Opportunities

Communications/ Outreach

- How do you engage with the elder and disabled community to ensure your services and events meet their needs and preferences?
- What strategies have been successful in promoting inclusivity and increasing participation among individuals with disabilities?

Funding/ Resources

- What partnerships or collaborations have been effective in expanding accessibility services?
- Thoughts on the State partnering with an organization/agency to facilitate an accessibility program?
- How open are you to collaborating with local initiatives focused on improving accessibility throughout the community?

THANK YOU!

Johanna Lyons
NH State Parks Project Manager
Johanna.Lyons@dncr.nh.gov

Nicole Rogers
GPI, Project Engineer
nrogers@gpinet.com

Questions, Comments,
Discussions?

Johanna Lyons
NH State Parks Project Manager
Johanna.Lyons@dncr.nh.gov

Nicole Rogers
GPI, Project Engineer
nrogers@gpinet.com

GEI



Consultants

Consulting
Engineers and
Scientists

GPI