

# MOLLIDGEWOCK STATE PARK

## NEW VISITORS RECEPTION CENTER - 30% DESIGN

1437 Berlin Road  
Errol, NH 03570

**SE GROUP**  
Landscape Architects and Planners  
131 Church Street  
Burlington, VT 05401  
tel: 802.862.0098  
fax: 802.865.2440  
www.segroup.com

### SHEET LIST

SHEET NO.	SHEET TITLE
G0.00	COVER SHEET
L0.01	LANDSCAPE GENERAL LEGEND & NOTES
C1.00	EXISTING CONDITIONS
C1.10	DEMOLITION PLAN
C2.00	CIVIL SITE PLAN
C3.00	EROSION CONTROL DETAILS
C3.10	CIVIL DETAILS
L1.00	SITE PLAN
A1.01	MAIN FLOOR PLAN
A1.02	ROOF PLAN
A2.01	EXTERIOR ELEVATIONS
A3.01	BUILDING & WALL SECTIONS
M1.01M	MECHANICAL PLAN AND DETAILS
E1.01M	ELECTRICAL PLAN AND DETAILS
P1.01M	PLUMBING PLAN AND DETAILS

### SITE



**NH STATE PARKS**  
Campground Expansion Project PH  
Mollidgewock State Park  
1437 Berlin Road  
Errol, NH  
03579

Issue  
**30% DESIGN**

Graphic Scale

North

Scale:

Date: August 25, 2023

Drawn By: KS

Checked By: PD

Issues:

No.	Description	Date
1	Name	00/00/00

Title

**COVER SHEET**

Sheet Number:

**G0.00**

Project Number: 23045001  
File: 10\_00-cover sheet.dwg

LANDSCAPE ARCHITECT  
SE GROUP  
1 MILL STREET, SUITE 190  
BURLINGTON, VT 05401

CIVIL ENGINEER  
HORIZONS ENGINEERING  
8836 POMFRET ROAD, SUITE 2A  
NORTH POMFRET, VT 05053

ARCHITECT  
SAMYN-D'ELIA ARCHITECTS, P.A.  
6 CENTRAL HOUSE ROAD  
HOLDERNESS, NH 03245

### GENERAL NOTES

1. ALL CONTRACTORS ARE REQUIRED TO CONTACT DIG SAFE, THE MUNICIPALITIES PUBLIC WORKS DEPARTMENT, AND ANY OTHER PUBLIC OR PRIVATE AGENCIES NECESSARY FOR UTILITY LOCATION PRIOR TO ANY CONSTRUCTION.
2. UNDERGROUND UTILITIES WILL EXIST THROUGHOUT THIS SITE AND MUST BE LOCATED PRIOR TO CONSTRUCTION. WHERE UNDERGROUND UTILITIES EXIST FIELD ADJUSTMENT MUST BE APPROVED BY A REPRESENTATIVE OF THE OWNER PRIOR TO INSTALLATION. NEITHER THE OWNER NOR THE LANDSCAPE ARCHITECT ASSUMES ANY RESPONSIBILITY WHATSOEVER, IN RESPECT TO THE CONTRACTORS ACCURACY IN LOCATING THE INDICATED ELEMENTS ON THE DRAWINGS.
3. THE LANDSCAPE ARCHITECT AND CONSULTANTS DO NOT WARRANT OR GUARANTEE THE ACCURACY AND COMPLETENESS OF THE WORK PRODUCT THEREIN BEYOND A REASONABLE DILIGENCE. IF ANY MISTAKES, OMISSIONS, OR DISCREPANCIES ARE FOUND TO EXIST WITH THE WORK PRODUCT, THE LANDSCAPE ARCHITECT SHALL BE PROMPTLY NOTIFIED SO THAT THEY MAY HAVE THE OPPORTUNITY TO TAKE ANY STEPS NECESSARY TO RESOLVE THE ISSUE. FAILURE TO PROMPTLY NOTIFY THE OWNER AND THE LANDSCAPE ARCHITECT OF SUCH CONDITIONS SHALL ABSOLVE THEM FROM ANY RESPONSIBILITY FOR THE CONSEQUENCES OF SUCH FAILURE, ACTIONS TAKEN WITHOUT THE KNOWLEDGE AND CONSENT OF THE OWNER AND THE LANDSCAPE ARCHITECT, OR IN CONTRADICTION TO THE OWNER AND THE LANDSCAPE ARCHITECT'S WORK PRODUCT OR RECOMMENDATIONS. SHALL BECOME THE RESPONSIBILITY NOT OF THE OWNER AND THE LANDSCAPE ARCHITECT BUT FOR THE PARTIES RESPONSIBLE FOR THE TAKING OF SUCH ACTION.
4. IT IS SE GROUP'S UNDERSTANDING THAT THE BASE INFORMATION WAS PROVIDED BY A LICENSED LAND SURVEYOR. THE CONTRACTOR SHALL NOTIFY THE OWNER'S REPRESENTATIVE AND LANDSCAPE ARCHITECT OF ANY DISCREPANCIES AS SOON AS THEY ARE DISCOVERED AND PRIOR TO ANY ACTION BY THE CONTRACTOR.
5. CONTRACTOR TO DEVELOP PLAN WITH OWNER OR OWNERS REPRESENTATIVE FOR PROTECTION OF EXISTING TREES TO REMAIN.

### LAYOUT NOTES

1. THE CONSULTANT DRAWINGS ARE SUPPLEMENTARY TO THE LANDSCAPE ARCHITECTURAL DRAWINGS. IT SHALL BE THE RESPONSIBILITY OF THE GENERAL CONTRACTOR TO CHECK WITH LANDSCAPE ARCHITECTURAL DRAWINGS BEFORE INSTALLATION OF CONSULTANT WORK. SHOULD THERE BE A DISCREPANCY BETWEEN THE LANDSCAPE ARCHITECTURAL DRAWINGS AND THE DRAWINGS OF THE CONSULTING ENGINEERS, IT SHALL BE BROUGHT TO THE LANDSCAPE ARCHITECT'S ATTENTION FOR CLARIFICATION. ANY WORK INSTALLED IN CONFLICT WITH ANY OF THE DRAWINGS SHALL BE CORRECTED AT NO EXPENSE TO THE OWNER OR DESIGN CONSULTANTS.
2. ALL SYMBOLS, ABBREVIATIONS AND MATERIAL INDICATIONS ARE CONSIDERED TO BE CONSTRUCTION STANDARDS. IF THE CONTRACTOR HAS QUESTIONS REGARDING THEIR EXACT MEANING, THE CONTRACTOR SHALL REQUEST THAT THE LANDSCAPE ARCHITECT ISSUE A CLARIFICATION.
3. DO NOT SCALE DRAWINGS. DIMENSIONS MISSING FROM PLANS OR NEEDED FOR EXECUTION OF THE WORK SHALL BE CLARIFIED OR PROVIDED BY THE LANDSCAPE ARCHITECT BEFORE THE WORK IS INSTALLED.
  - a. ALL DIMENSIONS ARE TO FACE OF FINISH MATERIAL, UNLESS OTHERWISE NOTED.
  - b. TAKE ALL DIMENSIONS PERPENDICULAR TO ANY REFERENCE LINE, WORK LINE, CENTERLINE, OR FACE OF BUILDING STRUCTURE.
  - c. ALL DIMENSIONS CALLED OUT AS "EQUAL" ARE CONSIDERED EQUIDISTANT MEASUREMENTS.
4. REFERENCE TO NORTH IS TRUE NORTH.
5. REFERENCE TO SCALE IS FOR FULL SIZED DRAWINGS, NOT REDUCED PLANS, DO NOT SCALE FROM DRAWINGS.
6. ANY CONFLICTS IN WHICH THE METHODS OR STANDARDS OF INSTALLATION OR MATERIALS SPECIFIED DO NOT EQUAL OR EXCEED THE REQUIREMENTS OF THE LAWS OR ORDINANCES GOVERNING THE PROJECT. THE LAWS AND ORDINANCES SHALL TAKE PRECEDENCE. NOTIFY THE LANDSCAPE ARCHITECT OF ALL CONFLICTS.
7. THE CONTRACTOR SHALL MAKE CERTAIN THAT THE WORK OF THE NEW CONSTRUCTION WILL NOT OBSTRUCT FIRE DEPARTMENT ACCESS TO NEARBY BUILDINGS. EXITS SHALL BE MAINTAINED CLEAR OF ALL OBSTRUCTIONS.
8. THE CONTRACTOR SHALL VERIFY THE EXISTING CONDITIONS AND NOTIFY THE LANDSCAPE ARCHITECT OF ANY CONDITIONS VARYING FROM INFORMATION HEREIN PRIOR TO PROCEEDING WITH WORK.
9. TO ESTABLISH LANDSCAPE ARCHITECTURAL INTENT, EVERY ATTEMPT HAS BEEN MADE TO IDENTIFY MOST CONDITIONS.
10. CONTRACTOR TO COMMUNICATE WITH CIVIL ENGINEER / SURVEYOR REGARDING SURVEY HORIZONTAL AND VERTICAL CONTROL. CIVIL ENGINEER CAN PROVIDE INFORMATION REQUIRED FOR SITE LAYOUT, AS NECESSARY.

### PLANTING NOTES

1. ALL PLANT MATERIAL SHALL BE INSTALLED AS PER THE CONTRACT DOCUMENTS AND SPECIFICATIONS.
2. THE LANDSCAPE CONTRACTOR SHALL BE RESPONSIBLE FOR COORDINATING WITH THE GENERAL CONTRACTOR AND IF NECESSARY OTHER SUB CONTRACTORS AS REQUIRED TO ACCOMPLISH PLANT MATERIAL INSTALLATION.
3. THE LANDSCAPE CONTRACTOR IS RESPONSIBLE TO LOCATE ALL UNDERGROUND UTILITIES PRIOR TO STARTING WORK.
4. PLANT MATERIAL INSTALLATION SHALL NOT OCCUR BEFORE ROUGH GRADING HAS BEEN COMPLETED AND APPROVED BY LANDSCAPE ARCHITECT.
5. ALL PLANT MATERIAL SHALL CONFORM TO THE GUIDELINES ESTABLISHED BY THE CURRENT AMERICAN STANDARD FOR NURSERY STOCK, PUBLISHED BY THE AMERICAN ASSOCIATION OF NURSERYMAN. ALL TREES AND SHRUBS OF THE SAME SPECIES AND SIZE SHALL HAVE MATCHING HEIGHT AND FORM UNLESS OTHERWISE NOTED ON THE PLANS.
6. CONTRACTOR SHALL SUPPLY ALL PLANT MATERIAL IN QUANTITIES SUFFICIENT TO COMPLETE THE PLANTINGS SHOWN IN THE CONTRACT DOCUMENTS. DISCREPANCIES IN QUANTITIES SHALL BE BROUGHT TO THE ATTENTION OF THE LANDSCAPE ARCHITECT IMMEDIATELY.
7. STAKE LOCATIONS OF PROPOSED PLANT MATERIAL PRIOR TO EXCAVATING PLANT PITS. LOCATION OF ALL PLANT PITS TO BE DETERMINED IN THE FIELD WITH THE LANDSCAPE ARCHITECT. PAINT OUTLINES FOR PLANT BEDS AND GROUND COVER. FINAL LAYOUT TO BE APPROVED BY LANDSCAPE ARCHITECT.
8. CONTRACTOR SHALL FURNISH PLANT MATERIAL FREE OF PESTS OR PLANT DISEASES. PRESELECTED OR "TAGGED" MATERIAL MUST BE INSPECTED BY THE CONTRACTOR AND CERTIFIED PEST AND DISEASE FREE. IT IS THE CONTRACTOR'S RESPONSIBILITY TO WARRANTY ALL PLANT MATERIAL BASED ON THE CONTRACT DOCUMENTS AND SPECIFICATIONS.
9. CONTRACTOR SHALL BE RESPONSIBLE FOR REPLACEMENT OF ANY EXISTING HARDSCAPE OR SOFTSCAPE MATERIALS DAMAGED DURING PLANTING OPERATIONS.
10. ALL TREES, PLANT BEDS AND GROUNDCOVER SHALL BE COVERED WITH 2" OF ORGANIC BARK MULCH AS NOTED IN THE SPECIFICATIONS.
11. AREAS SHOWN AS GROUNDCOVER AT THE BASE OF TREES AND SHRUBS MUST CONFORM TO THE FOLLOWING CRITERIA. THERE SHALL BE NO GROUND COVER INSTALLED AT THE BASE OF TREES OR SHRUBS AS FOLLOWS:
  - a. 4 FOOT RADIUS AROUND EVERGREENS.
  - b. 3 FOOT RADIUS AROUND DECIDUOUS TREES.
  - c. 2 FOOT RADIUS AROUND LARGE SHRUBS.
12. ALL SHRUBS AND GROUNDCOVER SHALL BE PLANTED USING A TRIANGULATED METHOD. REFER TO PLANT MATERIAL INSTALLATION DETAILS.

### GRADING NOTES

1. REFER TO THE CIVIL ENGINEER'S DRAWINGS FOR GENERAL SITE GRADING AROUND THE PROJECT SITE.
2. REFER TO THE LANDSCAPE ARCHITECT'S DRAWINGS FOR MICRO GRADING AROUND THE PROJECT SITE. MICRO GRADING IS RELATED TO FINISH ELEVATIONS OF HARDSCAPE SURFACES, I.E. SITE WALLS, TERRACES AND WALKS. UNLESS OTHERWISE NOTED.

### LANDSCAPE ARCHITECTURAL SYMBOLS

**DETAIL BUBBLE**

**SECTION SYMBOL**

**ELEVATION**

**NORTH ARROW**

**BUILDING ELEVATION NOTATION**

**SPOT ELEVATION**

**EXISTING SPOT ELEVATION**

**REVISION BUBBLE**

**DIMENSION**  
NOTE: ALL DIMENSIONS ARE TO OR FROM STRUCTURAL GRID LINES OR FACE OF FINISH MATERIAL, U.O.N.

#### LEGEND

	EXISTING CONTOURS
	PROPOSED CONTOURS
	SWALE
	GRADE BREAK
	EXIST, SPOT GRADE
	SPOT GRADE
	TOP OF STEP
	BOTTOM OF STEP
	TOP OF WALL
	BOTTOM OF WALL
	CATCH BASIN
	CONTROL JOINT
	CENTERLINE
	CONCRETE
	CONSTRUCTION
	CONTINUOUS
	CENTER
	DIAMETER
	DIMENSION
	DRAWING
	EACH
	EXPANSION JOINT
	ELEVATION
	EDGE OF PAVEMENT
	EQUAL
	EACH WAY
	FLUSH CURB
	FINISH FLOOR
	HIGH POINT
	LOW POINT
	RIM ELEVATION
	CATCH BASIN
	AREA DRAIN
	TRENCH DRAIN
	PLANTER DRAIN
	SUB SURFACE PLANTER DRAIN

### LANDSCAPE DRAWING ABBREVIATIONS

@	AD	AT	HP	HIGH POINT
ALT	AL	AREA DRAIN	HT	HEIGHT
ASPH	ALN	ALIGN	ID.	INSIDE DIAMETER
BLDG	ALT	ALTERNATE	LP	LOW POINT
BS	ASPH	ASPHALT	MAX	MAXIMUM
TS	BLDG	BOTTOM OF CURB	MFR	MANUFACTURER
BS	BLDG	BUILDING	MIN	MINIMUM
BS	BS	BOTTOM OF STEP	NIC	NOT IN CONTRACT
BS	BW	BOTTOM OF WALL	O.C.	ON CENTER
BW	CB	CATCH BASIN	O.D.	OUTSIDE DIAMETER
CJ	CJ	CONTROL JOINT	QTY	QUANTITY
CL	CL	CENTERLINE	R	RADIUS
CONC	CONC	CONCRETE	REINF	REINFORCED
CONST	CONST	CONSTRUCTION	REQ	REQUIRED
CONT	CONT	CONTINUOUS	SPECS	SPECIFICATIONS
CTR	CTR	CENTER	SS	STAINLESS STEEL
DA	DA	DIAMETER	STD	STANDARD
DM	DM	DIMENSION	T.D.	TRENCH DRAIN
DWG	DWG	DRAWING	TC	TOP OF CURB
EA	EA	EACH	TS	TOP OF STEP
EJ	EJ	EXPANSION JOINT	TW	TOP OF WALL
ELEV	ELEV	ELEVATION	TYP	TYPICAL
EOP	EOP	EDGE OF PAVEMENT	U.O.N.	UNLESS OTHERWISE NOTED
EQ	EQ	EQUAL	VIF	VERIFY IN FIELD
EW	EW	EACH WAY	W/	WITH
FC	FC	FLUSH CURB	W/O	WITHOUT
FF	FF	FINISH FLOOR	WWF	WELDED WIRE FABRIC

**SE GROUP**  
Landscape Architects and Planners  
131 Church Street  
Burlington, VT 05401  
tel: 802.862.0098  
fax: 802.865.2440  
www.segroup.com

**NH STATE PARKS**  
Campground Expansion Project #1  
Mollidgewood State Park  
1437 Berlin Road  
Ero1, NH  
03579

Issue

**30% DESIGN**

Graphic Scale

North

Scale:

Date: August 25, 2023

Drawn By: KS

Checked By: PD

Issues:

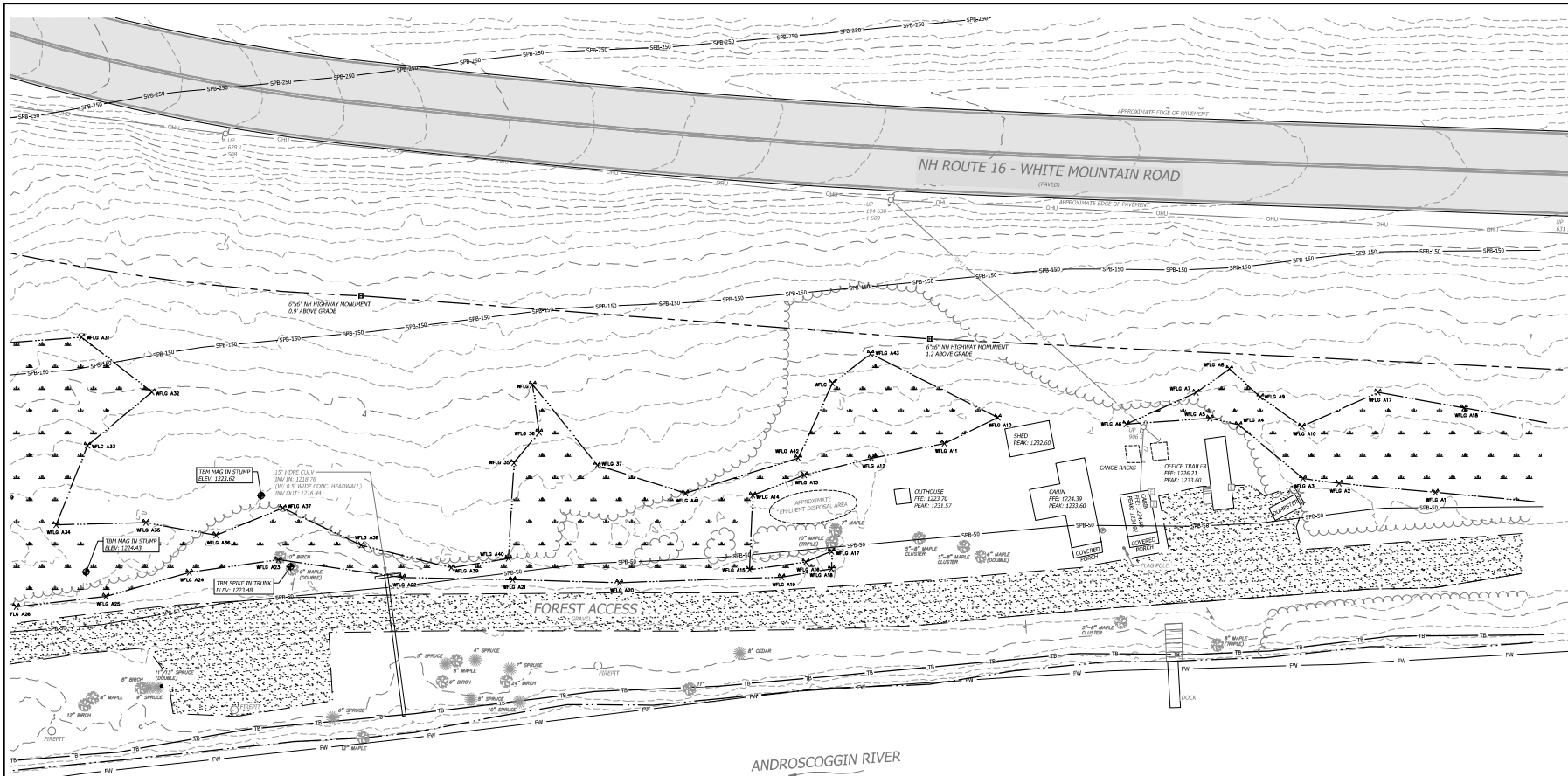
No.	Description	Date
1	Name	00/00/00

Title

**GENERAL  
LEGEND & NOTES**

Sheet Number:  
**L0.00**

Project Number: 23045001  
File: I0\_00-cover sheet.dwg



**GENERAL NOTES**

1. THE HORIZONTAL DATUM IS ON THE NEW HAMPSHIRE STATE PLANE COORDINATE SYSTEM NAD83 (2011), THE VERTICAL DATUM IS THE NORTH AMERICAN VERTICAL DATUM OF 1988 (NAVD88).
2. THIS PLAN IS BASED ON A FIELD SURVEY COMPLETED IN MAY OF 2023 WITH SOKKIA GRV3 DUAL FREQUENCY SURVEY GRADE GPS RECEIVERS AND A LEICA TS13 ROBOTIC TOTAL STATION.
3. TOPOGRAPHY SHOWN HEREON IS BASED ON BARE EARTH DEM LIDAR DATA FILES DATED 2017 FROM THE STATE OF NEW HAMPSHIRE.
4. THE SURVEYED PARCEL IS MAPPED AS LYING OUTSIDE OF THE FLOOD ZONE PER FEMA FIRM MAP NUMBER 33007C0692Z EFFECTIVE ON 2/20/2013.
5. THE LOCATION OF NH ROUTE 16 AS DEPICTED HEREON IS APPROXIMATE BASED ON AERIAL ORTHORECTOGRAPHY DATED 2015.
6. THE APPROXIMATE RIGHT-OF-WAY SHOWN HEREON IS BASED ON REFERENCE PLAN "BOUNDARY PLAN OF MOLLIDGEOCK STATE PARK" DATED FEBRUARY 16, 2018 PREPARED BY THE STATE OF NEW HAMPSHIRE DEPARTMENT OF NATURAL & CULTURAL RESOURCES AND EVIDENCE FOUND IN THE FIELD.

**WETLAND NOTES**

STATE AND FEDERAL JURISDICTIONAL WETLANDS WERE DELINEATED BY N.H. CERTIFIED WETLAND SCIENTIST, ELI BUZZELLI, IN MAY 2023. WETLANDS MAPPING WAS DONE BY N.H. LICENSED LAND SURVEYORS, HORIZONS ENGINEERING, INC. IN ACCORDANCE WITH THE FOLLOWING GUIDANCE DOCUMENTS:

1. N.H. CODE OF ADMINISTRATIVE RULES [ENH-WT 301.01] WITH THE TECHNIQUES OUTLINED IN THE 1987 "U.S. ARMY CORPS OF ENGINEERS WETLAND DELINEATION MANUAL, TECHNICAL REPORT Y-87-1."
2. U.S. ARMY CORPS OF ENGINEERS, 2009, "REGIONAL SUPPLEMENT TO THE CORPS OF ENGINEERS WETLAND DELINEATION MANUAL: NORTHCENTRAL AND NORTHEAST REGION, U.S. ARMY CORPS OF ENGINEERS RESEARCH AND DEVELOPMENT CENTER, ENVIRONMENTAL LABORATORY (EDEL) TR-09-19."
3. U.S. ARMY CORPS OF ENGINEERS, 2012, "NATIONAL LIST OF PLANT SPECIES THAT OCCUR IN WETLANDS: NORTHEAST REGION, U.S. ARMY CORPS OF ENGINEERS RESEARCH AND DEVELOPMENT CENTER, ENVIRONMENTAL LABORATORY."
4. N.H. CODE OF ADMINISTRATIVE RULES [ENH-WT 301.02] WITH THE U.S. FISH AND WILDLIFE SERVICE MANUAL FWS/OBS-79/11 ENTITLED "CLASSIFICATION OF WETLANDS AND DEEPWATER HABITATS OF THE UNITED STATES, COWARDIN ET AL, 1979."
5. NEW ENGLAND HYDRIC SOILS TECHNICAL COMMITTEE, 2004, 3RD ED., "FIELD INDICATORS FOR IDENTIFYING HYDRIC SOILS IN NEW ENGLAND," NEW ENGLAND INTERSTATE WATER POLLUTION CONTROL COMMISSION, LOWELL, MA.
6. U.S. DEPARTMENT OF AGRICULTURE, NATURAL RESOURCE CONSERVATION SERVICE, 2010, "FIELD INDICATORS OF HYDRIC SOILS IN THE UNITED STATES, VERSION 7.0," L.M. VASILAS, G.W. HURT, AND C.V. NOBLE (EDS.), USDA, NRCS, IN COOPERATION WITH THE NATIONAL TECHNICAL COMMITTEE FOR HYDRIC SOILS.

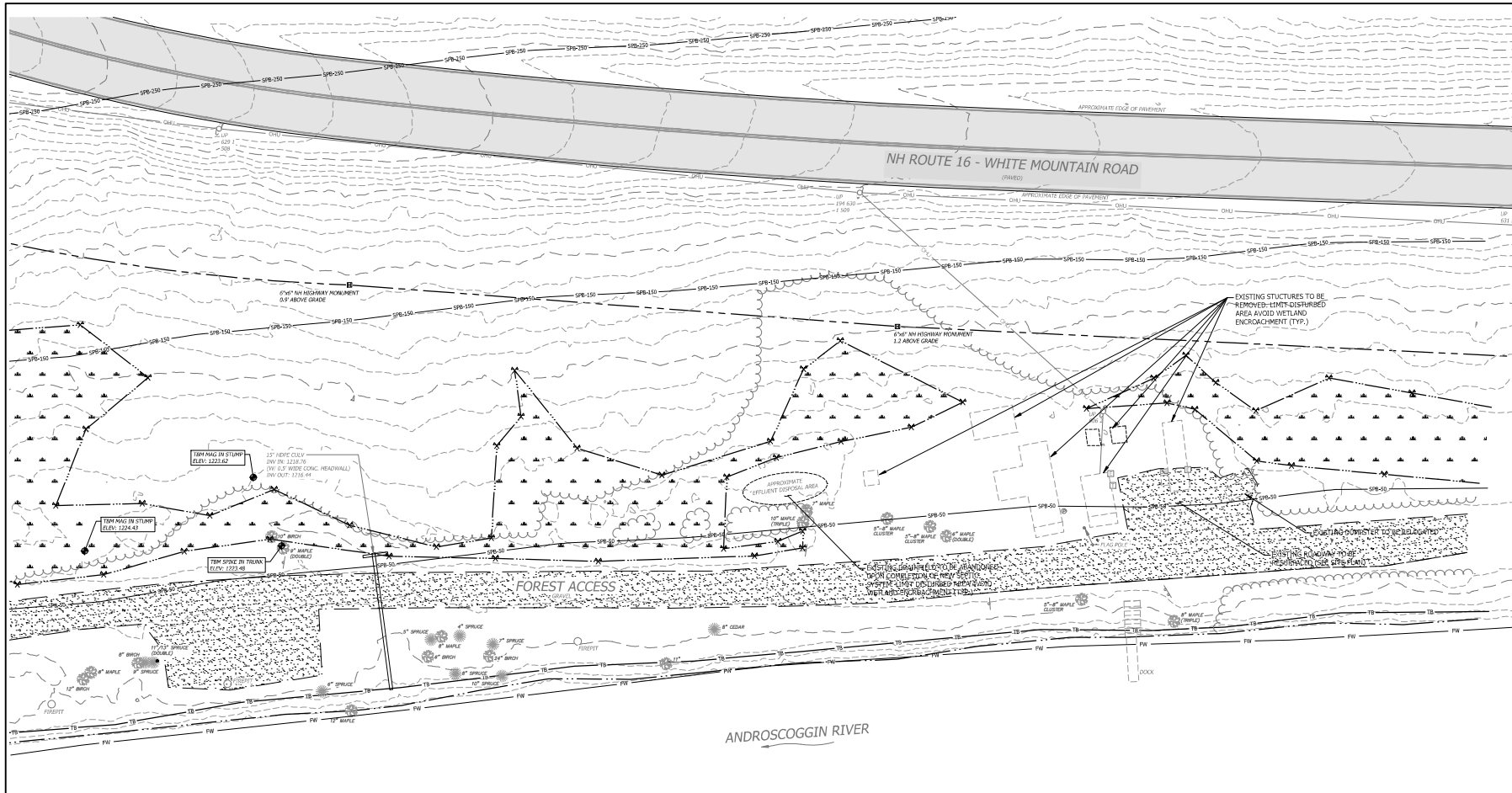
**LEGEND**

- APPROXIMATE RIGHT-OF-WAY LIMIT
- MAJOR CONTOUR, 10-FOOT INTERVAL
- MINOR CONTOUR, 2-FOOT INTERVAL
- EDGE OF WETLAND
- EDGE OF RIVER
- EDGE OF GRAVEL
- TOP OF BANK
- FEMA FLOODWAY
- 50-FOOT SHORELAND PROTECTION BUFFER
- 150-FOOT SHORELAND PROTECTION BUFFER
- 250-FOOT SHORELAND PROTECTION BUFFER
- OVERHEAD UTILITY LINES
- NH HIGHWAY MONUMENT
- UTILITY POLE
- GUY WIRE
- ELECTRIC CABINET
- WALL-MOUNTED PAYPHONE
- SIGN
- PROPANE TANK
- WOOD POST BOLLARD
- FLAG POST
- DECIDUOUS TREE
- CONIFER TREE
- WETLAND FLAG AND FLAG ID #
- SPOT ELEVATION

**PROGRESS PRINT  
NOT FOR CONSTRUCTION**

Issues:

No.	Description	Date
1	Name	00/00/00



**GENERAL NOTES**

1. THE HORIZONTAL DATUM IS ON THE NEW HAMPSHIRE STATE PLANE COORDINATE SYSTEM NAD83 (2011), THE VERTICAL DATUM IS THE NORTH AMERICAN VERTICAL DATUM OF 1988 (NAVD83).
2. THIS PLAN IS BASED ON A FIELD SURVEY COMPLETED IN MAY OF 2023 WITH SOKKIA GR34 DUAL FREQUENCY SURVEY GRADE GPS RECEIVERS AND A LEICA TS13 ROBOTIC TOTAL STATION.
3. TOPOGRAPHY SHOWN HEREON IS BASED ON BARE EARTH DEM LIAR DATA FILES DATED 2017 FROM THE STATE OF NEW HAMPSHIRE.
4. THE SURVEYED PARCEL IS MAPPED AS LYING OUTSIDE OF THE FLOOD ZONE PER FEMA, FIRM MAP NUMBER: 230070000D EFFECTIVE ON 2/20/2013.
5. THE LOCATION OF NH ROUTE 16 AS DEPICTED HEREON IS APPROXIMATE BASED ON AERIAL PHOTOGRAPHY DATED 2015.
6. THE APPROXIMATE RIGHT-OF-WAY SHOWN HEREON IS BASED ON REFERENCE PLAN "BOUNDARY PLAN OF MOLLIGEWOCK STATE PARK" DATED FEBRUARY 16, 2018 PREPARED BY THE STATE OF NEW HAMPSHIRE DEPARTMENT OF NATURAL & CULTURAL RESOURCES AND EVIDENCE FOUND IN THE FIELD.

**WETLAND NOTES**

STATE AND FEDERAL JURISDICTIONAL WETLANDS WERE DELINEATED BY N.H. CERTIFIED WETLAND SCIENTIST, ERI BUZZELLI, IN MAY 2023. WETLANDS MAPPING WAS DONE BY N.H. LICENSED LAND SURVEYORS, HORIZONS ENGINEERING, INC. IN ACCORDANCE WITH THE FOLLOWING GUIDANCE DOCUMENTS:

1. N.H. CODE OF ADMINISTRATIVE RULES (ENV-WF 301.01) WITH THE TECHNIQUES OUTLINED IN THE 1987 U.S. ARMY CORPS OF ENGINEERS WETLAND DELINEATION MANUAL, TECHNICAL REPORT Y-87-1.
2. U.S. ARMY CORPS OF ENGINEERS, 2009, "REGIONAL SUPPLEMENT TO THE CORPS OF ENGINEERS WETLAND DELINEATION MANUAL, NORTH-CENTRAL AND NORTH-EAST REGION, U.S. ARMY CORPS OF ENGINEERS RESEARCH AND DEVELOPMENT CENTER, ENVIRONMENTAL LABORATORY (EDC/JEL TR-09-15)".
3. U.S. ARMY CORPS OF ENGINEERS, 2012, "NATIONAL LIST OF PLANT SPECIES THAT OCCUR IN WETLANDS: NORTH-EAST REGION, U.S. ARMY CORPS OF ENGINEERS RESEARCH AND DEVELOPMENT CENTER, ENVIRONMENTAL LABORATORY".
4. N.H. CODE OF ADMINISTRATIVE RULES (ENV-WF 301.02) WITH THE U.S. FISH AND WILDLIFE SERVICE MANUAL FWS/OBS-79/31 ENTITLED "CLASSIFICATION OF WETLANDS AND DEEPWATER HABITATS OF THE UNITED STATES, COWARDIN ET AL., 1979".
5. NEW ENGLAND HYDRIC SOILS TECHNICAL COMMITTEE, 2004, 3RD ED., "FIELD INDICATORS FOR IDENTIFYING HYDRIC SOILS IN NEW ENGLAND," NEW ENGLAND INTERSTATE WATER POLLUTION CONTROL COMMISSION, LOWELL, MA.
6. U.S. DEPARTMENT OF AGRICULTURE, NATURAL RESOURCE CONSERVATION SERVICE, 2010, "FIELD INDICATORS OF HYDRIC SOILS IN THE UNITED STATES, VERSION 7.0," L.M. VAUGHAN, G.W. HURT, AND C.V. NOBLE (EDS.), USDA, NRCS, IN COOPERATION WITH THE NATIONAL TECHNICAL COMMITTEE FOR HYDRIC SOILS.

**LEGEND**

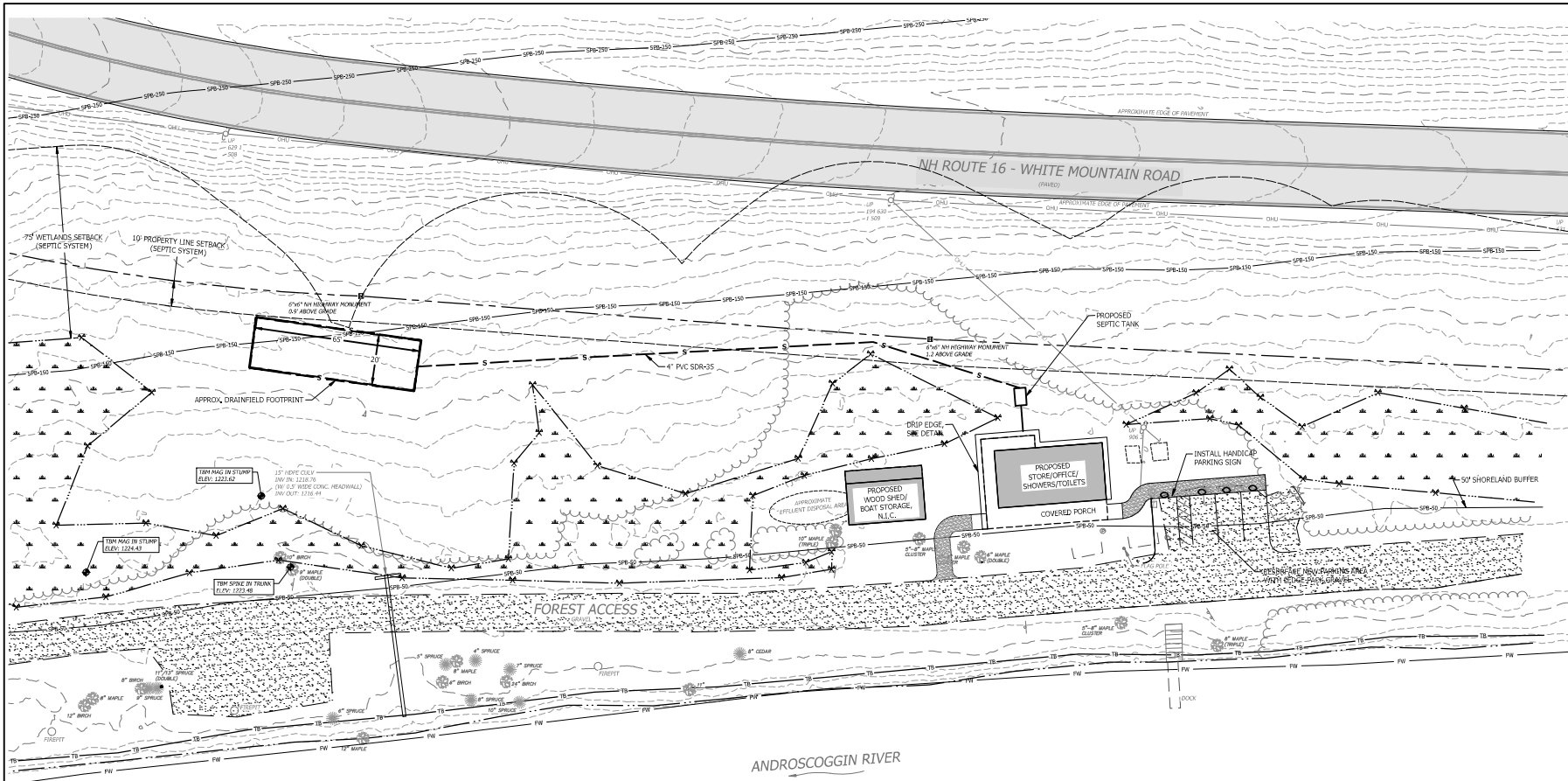
- APPROXIMATE RIGHT-OF-WAY LIMIT
- MAJOR CONTOUR, 10-FOOT INTERVAL
- MINOR CONTOUR, 2-FOOT INTERVAL
- EDGE OF WETLAND
- EDGE OF RIVER
- EDGE OF GRAVEL
- TS TOP OF BANK
- FW FEMA FLOODWAY
- SPB-50 50-FOOT SHORELAND PROTECTION BUFFER
- SPB-150 150-FOOT SHORELAND PROTECTION BUFFER
- SPB-250 250-FOOT SHORELAND PROTECTION BUFFER
- OUE OVERHEAD UTILITY LINES
- NH HIGHWAY MONUMENT
- UTILITY POLE
- CWT WIRE
- EC ELECTRIC CABINET
- WM WALL-MOUNTED PAYPHONE
- S SIGN
- PT PROPANE TANK
- WP WOOD POST BOLLARD
- FP FLAG POST
- DT DECIDUOUS TREE
- CT CONIFER TREE
- WF WETLAND FLAG AND FLAG ID #
- SE SPOT ELEVATION

**PROGRESS PRINT  
NOT FOR CONSTRUCTION**

Issues:

No.	Description	Date
1	Name	00/00/00





**GENERAL NOTES**

- ALL WORK SHALL BE CONSTRUCTED IN ACCORDANCE WITH THESE PLANS AND TECHNICAL SPECIFICATIONS FOR \_\_\_\_\_ DATED \_\_\_\_\_.
- NO EXISTING MONUMENTS, BOUNDS, OR BENCHMARKS SHALL BE DISTURBED WITHOUT FIRST MAKING PROVISIONS FOR RELOCATION.
- ALL WORK SHALL BE PERFORMED WITHIN THE PROPERTY OF, AND EASEMENTS SECURED BY, THE OWNER.
- THE CONTRACTOR SHALL BE RESPONSIBLE FOR THE DATA COLLECTION AND PREPARATION OF RECORD DRAWINGS.
- THE CONTRACTOR IS SOLELY RESPONSIBLE FOR CONTROLLING EROSION IN ALL AREAS DISTURBED BY HIS ACTIONS, COSTS FOR REQUIRED EROSION CONTROL, REGARDLESS OF WHETHER OR NOT SUCH MEASURES ARE SHOWN ON THE ENGINEERING DRAWINGS, SHALL BE BORNE BY HIM.
- UTILITY LOCATIONS ARE BASED ON THE BEST AVAILABLE INFORMATION. THE CONTRACTOR IS RESPONSIBLE FOR LOCATION AND PROTECTION OF EXISTING UTILITIES AND SHALL REPAIR ANY DAMAGE AS QUICKLY AS POSSIBLE AT HIS OWN EXPENSE. ALL UTILITIES ENCOUNTERED SHALL BE LOCATED BY DEPTH AND TIES AND SHOWN BY THE CONTRACTOR ON HIS "AS BUILT" DRAWINGS. HAND INDICATION SHALL BE DONE WHEREVER UNDERGROUND UTILITIES ARE SHOWN OR ANTICIPATED. THE CONTRACTOR SHALL CONTACT DIG SAFE AND THE APPROPRIATE AUTHORITIES PRIOR TO ANY CONSTRUCTION IN ORDER TO VERIFY EXISTING CONDITIONS AND UTILITY LOCATIONS.

**LEGEND**

- APPROXIMATE RIGHT-OF-WAY LIMIT
- MAJOR CONTOUR, 10-FOOT INTERVAL
- MINOR CONTOUR, 2-FOOT INTERVAL
- EDGE OF WETLAND
- EDGE OF RIVER
- EDGE OF GRAVEL
- SEDIMENT FENCE
- SETBACK
- TOP OF BANK
- FEMA FLOODWAY
- 50-FOOT SHORELAND PROTECTION BUFFER
- 150-FOOT SHORELAND PROTECTION BUFFER
- 250-FOOT SHORELAND PROTECTION BUFFER
- OVERHEAD UTILITY LINES
- NH HIGHWAY MONUMENT
- UTILITY POLE
- GUY WIRE
- ELECTRIC CABINET
- WALL-MOUNTED PAYPHONE
- ▲ SIGN
- PROPANE TANK
- BOULDER BOLLARD
- WOOD POST BOLLARD
- FLAG POST
- DECIDUOUS TREE
- CONIFER TREE
- WETLAND FLAG AND FLAG ID #
- SPOT ELEVATION

**PROGRESS PRINT  
NOT FOR CONSTRUCTION**

**NH STATE PARKS**  
Campground Expansion Project PII  
Mollidgewock State Park  
1437 Berlin Road  
Berlin, NH  
03579

Issue  
**30% DESIGN**  
Graphic Scale  
0 10 20 40  
North

Scale: 1" = 20'  
Date: August 25, 2023  
Drawn By: DW  
Checked By: RH

Issues:

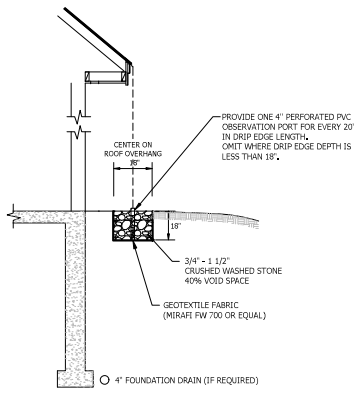
No.	Description	Date
1	Name	00/00/00

**SITE PLAN**

Sheet Number:  
**C2.00**

Project Number: 23045001  
File: 220838 -x-site.dwg





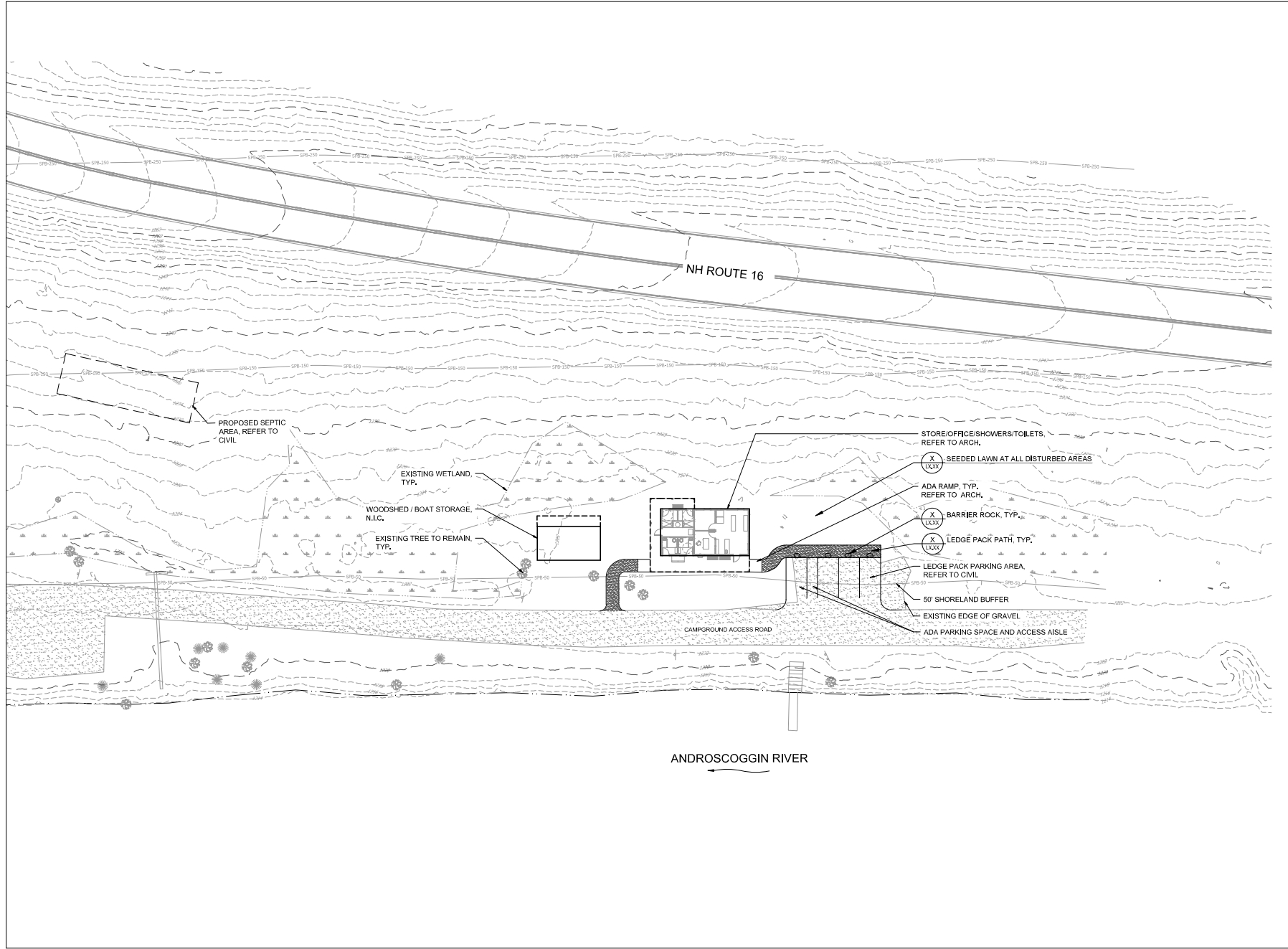
**INFILTRATION STONE DRIP EDGE DETAIL**  
NOT TO SCALE

Issues:

No.	Description	Date
1	Name	00/00/00

**PROGRESS PRINT  
NOT FOR CONSTRUCTION**

8/22/2023 4:15:08 PM M:\NH Campgrounds\PROJECTS\PH\_20\Inches\207\01\_20 Design Package\Mollidgewoc\L1.00-Site Plan.dwg



**NH STATE PARKS**  
 Campground Expansion Project PH  
 Mollidgewoc State Park  
 1437 Berlin Road  
 Errol, NH  
 03579

Issue  
**30% DESIGN**  
 Graphic Scale  
 0 15' 30' 45'  
 North

Scale: 1" = 20'  
 Date: August 25, 2023  
 Drawn By: KS  
 Checked By: PD

Issues:

No.	Description	Date
1	Name	00/00/00

Title  
**SITE PLAN**

Sheet Number:  
**L1.00**

Project Number: 23045001  
 File: I1\_00-site plan.dwg

**APPLICABLE BUILDING SAFETY CODES:**

- NH STATE BUILDING CODE - RSA 1504
- INTERNATIONAL BUILDING CODE (IBC) - 2018 EDITION, AS AMENDED
- NEW HAMPSHIRE SAF-C 6000 FIRE CODE
- NFPA 1 FIRE CODE - 2018 EDITION
- NFPA 101 LIFE SAFETY CODE - 2018 EDITION - CHAPTER 36, "NEW MERCANTILE"
- INTERNATIONAL ENERGY CONSERVATION CODE (IECC) - 2018 EDITION
- INTERNATIONAL PLUMBING CODE (IPC) - 2018 EDITION
- INTERNATIONAL MECHANICAL CODE (IMC) - 2018 EDITION
- NATIONAL ELECTRIC CODE (NEC) - 4000
- APPLICABLE ACCESSIBILITY CODES & STANDARDS:
- ICC A117.1-2009 - ACCESSIBLE & USABLE BUILDINGS & FACILITIES

**PROPOSED FACILITY:**

- **OVERALL FACILITY FIRE PROTECTION**
- SMOKE EXHAUST SYSTEM NOT REQUIRED (IBC 909.2.7)
- FIRE EXTINGUISHERS COMPLYING WITH IBC 906.1

- **OCCUPANCY CLASSIFICATION:** IBC - BUSINESS (B); USC - CHAPTER 38, "NEW BUSINESS OCCUPANCIES"

- **CONSTRUCTION CLASSIFICATION:** TYPE - VB (COMBUSTIBLE, NO RATING)
- SNOWLOAD: 2
- SERVICE SING: 1

- **BUILDING STORIES & HEIGHT:** (IBC TABLE 504.3 & 504.4)

- ALLOWABLE STORIES: 2 STORIES
- PROPOSED STORIES: 1 STORY - [2018 IBC](#)

- ALLOWABLE HEIGHT: 40'-0" (TO AVERAGE HEIGHT OF HIGHEST ROOF PLANE)
- PROPOSED HEIGHT: **18'-0"** - [2018 IBC](#)

- **BUILDING AREA:** (IBC TABLE 506.2)

- ALLOWABLE AREA (1ST FLOOR PLAN): **6,000 GSF**
- PROPOSED AREA (1ST FLOOR PLAN): **1,585 GSF** - [2018 IBC](#)

- STREET FRONTAGE INCREASE (IBC 506.2) - NOT REQUIRED
- SPRINKLER INCREASE (IBC 506.3) - NOT REQUIRED

- **TOTAL PROPOSED GROSS FLOOR AREA: 1,585 SF**

**FIRE RESISTANCE RATINGS REQUIREMENTS:**

- **BUILDING ELEMENTS (TABLE 201)**
- PRIMARY STRUCTURAL FRAME: 0 HR
- EXTERIOR BEARING WALLS: 0 HR
- INTERIOR BEARING WALLS: 0 HR
- EXTERIOR NON-BEARING WALLS: 0 HR
- INTERIOR NON-BEARING WALLS: 0 HR
- FLOOR CONSTRUCTION: 0 HR
- ROOF CONSTRUCTION: 0 HR

**MEANS OF EGRESS REQUIREMENTS:**

- MAXIMUM TRAVEL DISTANCE: 200 FEET (SA 2.6.6.3)
- MAXIMUM DEAD-END CORRIDOR LENGTH: 20 FEET (SA 2.5.2)
- MAXIMUM COMMON PATH OF TRAVEL: 75 FEET (SA 2.5.3.1)
- INTERIOR FINISH, FLOORS: NO REQUIREMENTS (SA 2.3.3.3)
- INTERIOR FINISH, WALLS AND CEILING: A, B, or C (SA 3.3)

**ENERGY CODE - MINIMUM THERMAL ENVELOPE REQUIREMENTS:**

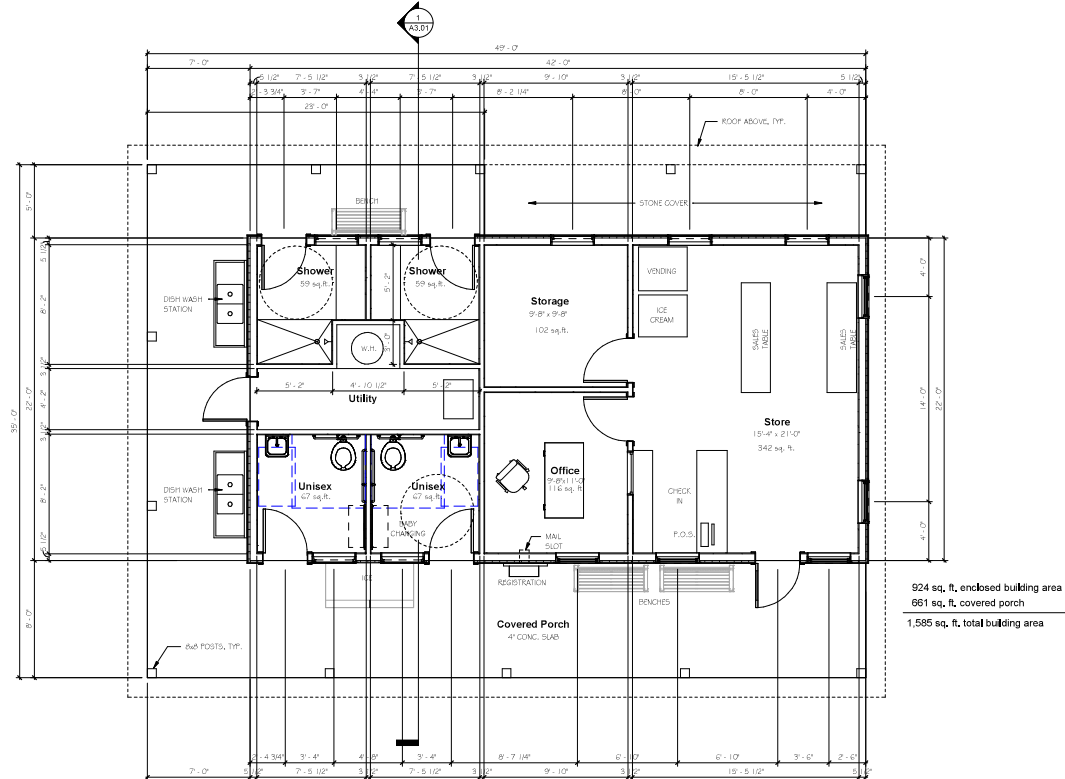
- BUILDING IS UNWATERPROOFED

**PLUMBING REQUIREMENTS:**

- WATER CLOSETS: 1 MALE, 1 FEMALE
- LAVATOIRES: 1 MALE, 1 FEMALE
- SHOWERS: 2
- SERVICE SINK: 1

- ACCESSIBLE TOILET ROOMS: ALL NEW TOILET & SHOWER ROOMS ARE REQUIRED TO BE ACCESSIBLE (IBC CHAPTER 11). NH AMENDMENT: SINGLE OCCUPANCY TOILETS MAY BE UNLESS PROVIDED THE NUMBER OF WATER CLOSETS COMPLIES WITH TABLE 2903.1.

**CODE SUMMARY**



**1** MAIN FLOOR PLAN 1/4"=1'-0"  
Scale: 1/4" = 1'-0"

**NH STATE PARKS**

Campground Expansion Project PH  
Mollidgewood State Park  
1437 Berlin Road  
Errol, NH  
03579

Issue

**30% DESIGN**

Graphic Scale

North

Scale: As Indicated

Date: Aug. 25, 2023

Drawn By: MR

Checked By: WD

Issues:

No.	Description	Date

Title

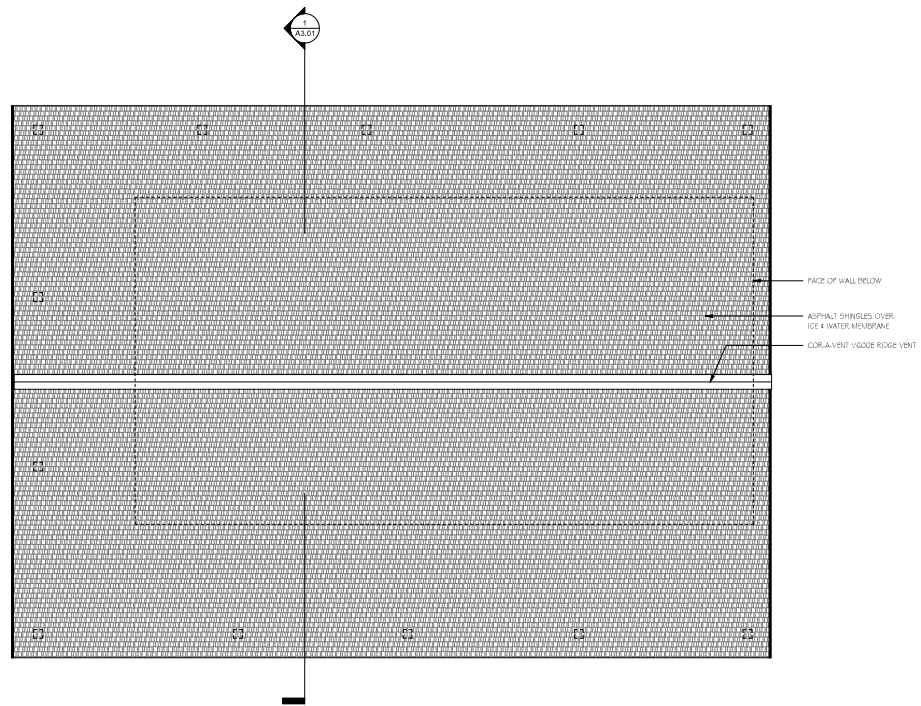
MAIN FLOOR PLAN

Sheet Number:

**A1.01**

Project Number: 23045001

File:



**1** ROOF PLAN  
Scale: 1/4" = 1'-0"

**SAMYN - D'ELIA**  
ARCHITECTS, P.A.

P.O. Box 229  
Hokkness, NH 03245  
tel: (603) 968-7133

HVAC, Elec. & Plumb, Engineer:  
Charles P. Buckley, P.E.,  
500 Depot Street  
Rumney, NH 03266  
tel: (603) 786-9992

Structural Engineer:  
Fisher Engineering, P.C.,  
686 Belknap Mountain Road  
Gilford, NH 03249  
tel: (603) 528-7641

**NH STATE PARKS**

Campground Expansion Project PH  
Mollidgewock State Park  
1437 Berlin Road  
Errol, NH  
03579

Issue

**30% DESIGN**

Graphic Scale

North

Scale: 1/4" = 1'-0"

Date: Aug. 25, 2023

Drawn By: MR

Checked By: WD

Issues:

No.	Description	Date

Title

ROOF PLAN

Sheet Number:

**A1.02**

Project Number: 23045001

File:



**NH STATE PARKS**

Campground Expansion Project PII  
Mollidgewock State Park  
1437 Berlin Road  
Errol, NH  
03579

Issue

**30% DESIGN**

Graphic Scale

North

Scale: 1/4" = 1'-0"

Date: Aug. 25, 2023

Drawn By: MR

Checked By: WD

Issues:

No.	Description	Date

Title

EXTERIOR ELEVATIONS

Sheet Number:

**A2.01**

Project Number: 23045001

File:



**1 NORTH ELEVATION**  
Scale: 1/4" = 1'-0"



**2 EAST ELEVATION**  
Scale: 1/4" = 1'-0"



**3 SOUTH ELEVATION**  
Scale: 1/4" = 1'-0"



**4 WEST ELEVATION**  
Scale: 1/4" = 1'-0"

**NH STATE PARKS**

Campground Expansion Project PH  
Mollidgewock State Park  
1437 Berlin Road  
Errol, NH  
03579

Issue

**30% DESIGN**

Graphic Scale

North

Scale: As Indicated

Date: Aug. 25, 2023

Drawn By: MR

Checked By: WD

Issues:

No.	Description	Date

Title

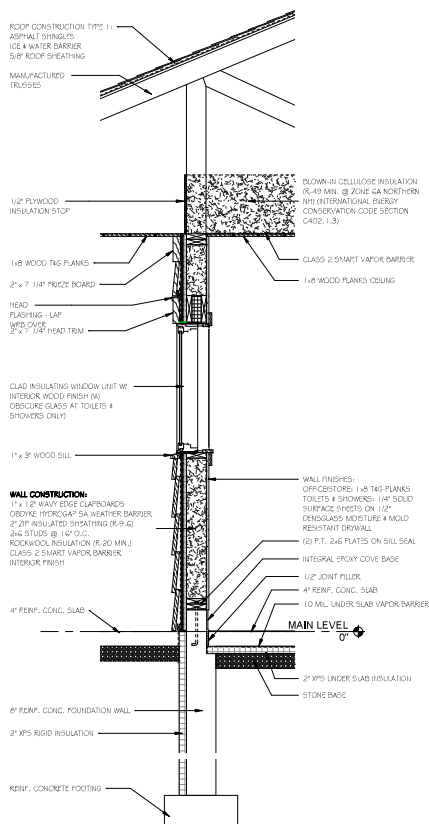
**BUILDING & WALL SECTIONS**

Sheet Number:

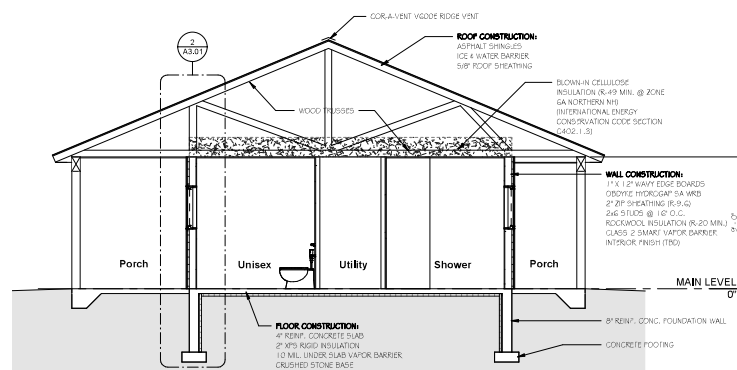
**A3.01**

Project Number: 23045001

File:



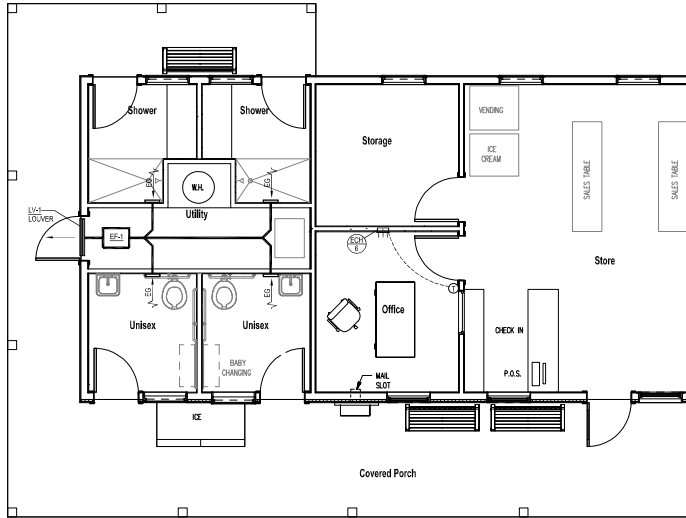
**2 WALL SECTION**  
Scale: 3/4" = 1'-0"



**1 BUILDING SECTION**  
Scale: 1/4" = 1'-0"

**HVAC NOTES**

1. **SCOPE OF WORK**
  - A. THE CONTRACTOR IS RESPONSIBLE FOR ALL WORK, MATERIALS, AND LABOR TO SATISFY A COMPLETE WORKING SYSTEM WHETHER SPECIFIED OR IMPLIED.
  - B. ALL WORK IS TO BE PERFORMED IN STRICT COMPLIANCE WITH THE INTERNATIONAL MECHANICAL CODE 2018, ALL LOCAL AND ALL OTHER REGULATION GOVERNING WORK OF THIS NATURE.
  - C. THE CONTRACTOR SHALL, BEFORE SUBMITTING ANY PROPOSAL, EXAMINE THE PROPOSED SITE AND SHALL DETERMINE FOR HIMSELF THE CONDITIONS THAT MAY EFFECT THE WORK, NO ALLOWANCE SHALL BE MADE IF THE CONTRACTOR FAILS TO MAKE SUCH EXAMINATIONS.
  - D. ALL EQUIPMENT AND MATERIALS SHALL BE AS SPECIFIED OR "APPROVED EQUAL" BY THE ENGINEER OR ARCHITECT.
2. **PERMITS**
  - A. THE CONTRACTOR SHALL SECURE ALL PERMITS OR APPLICATIONS AND PAY ANY AND ALL FEES.
3. **SHOP DRAWINGS**
  - A. SUBMIT MATERIAL LIST AND SHOP DRAWINGS FOR MAJOR EQUIPMENT TO THE ARCHITECT/ENGINEER FOR APPROVAL. THE CONTRACTOR SHALL SUBMIT FIVE SETS OF SHOP DRAWINGS AND THEY SHALL BE CLEARLY LABELED.
4. **DUCTWORK**
  - A. THE DUCTWORK SHALL BE CONSTRUCTED IN ACCORDANCE WITH THE "SMACNA" APPLICABLE MANUALS. ALL DUCTWORK SHALL BE THE LLW VELOCITY TYPE, UNLESS SPECIFIED OTHERWISE.
  - B. CONTRACTOR SHALL PROVIDE AND INSTALL APPROVED FIRE DAMPERS AND ACCESS PANELS IN ANY AND ALL DUCTWORK WHICH PENETRATES A HORIZONTAL OR VERTICAL FIRE PARTITION, OR AS OTHERWISE SHOWN ON DRAWINGS.
  - C. ALL BRANCH DUCTS TO HAVE VOLUME DAMPERS.
  - D. SMOOTH TURN RADIUS DUCTWORK OR TURNING VANES SHALL BE USED THROUGHOUT WHERE FLOW EXCEEDS 150 CFM.
  - E. ALL DUCT JOINTS TO BE SEALED IN ACCORDANCE WITH "SMACNA" STANDARDS AND ACCEPTED GOOD PRACTICE.
  - F. ALL DUCT DIMENSIONS SHOWN ARE NET INSIDE VALUES. DIMENSIONS MAY BE CHANGED SO LONG AS THE NET FREE FACE AREA IS MAINTAINED.
5. **HVAC CONTROLS**
  - A. CONTRACTOR TO SUPPLY AND INSTALL ALL CONTROL WIRING AND THERMOSTATS AS REQUIRED.
6. **ELECTRICAL**
  - A. CONTRACTOR TO COORDINATE WITH ELECTRICAL CONTRACTOR FOR LOCATION OF WIRING FOR EACH HVAC UNIT.
7. **MISCELLANEOUS**
  - A. ALL EXTERIOR OPENINGS TO BE PROPERLY CALKED AND SEALED WITH A SEALANT OF HIGH QUALITY AND LONG LIFE, TO PREVENT INFILTRATION OF OUTSIDE AIR INTO CONDITIONED SPACE.
  - B. DO NOT SCALE THIS DRAWING FOR EXACT DIMENSIONS. VERIFY ALL FIGURES, CONDITIONS, AND DIMENSIONS AT THE JOB SITE.
  - C. THE MECHANICAL PLANS ARE INTENDED TO BE DIAGRAMMATIC AND ARE BASED ON ONE MANUFACTURE'S EQUIPMENT. THEY ARE NOT INTENDED TO SHOW EVERY ITEM IN ITS EXACT LOCATION, THE EXACT DIMENSIONS, OR ALL THE DETAILS OF THE EQUIPMENT. THE CONTRACTOR SHALL VERIFY THE ACTUAL DIMENSIONS OF THE EQUIPMENT PROPOSED TO ENSURE THAT THE EQUIPMENT WILL FIT IN THE AVAILABLE SPACE.
8. **TESTING AND BALANCING**
  - A. THE HVAC SYSTEM SHALL BE TESTED AND BALANCED BY AN INDEPENDENT AGENCY, UNDER THE SUPERVISION OF A LICENSED PROFESSIONAL ENGINEER. A SEALED TYPE WRITTEN REPORT SHALL BE SUBMITTED TO THE ARCHITECT/ENGINEER FOR REVIEW AND APPROVAL.
9. **GUARANTEE**
  - A. MATERIALS, EQUIPMENT AND INSTALLATION SHALL BE GUARANTEED FOR A PERIOD OF (NINE) YEAR FROM DATE OF ACCEPTANCE. DEFECTS WHICH APPEAR DURING THAT PERIOD SHALL BE CORRECTED AT THIS CONTRACTOR'S EXPENSE.
  - B. FOR THE SAME PERIOD, THE MECHANICAL CONTRACTOR SHALL BE RESPONSIBLE FOR ANY DAMAGE TO PREMISES CAUSED BY DEFECTS IN WORKMANSHIP OR IN THE WORK OR EQUIPMENT FURNISHED AND/OR INSTALLED BY HIM.

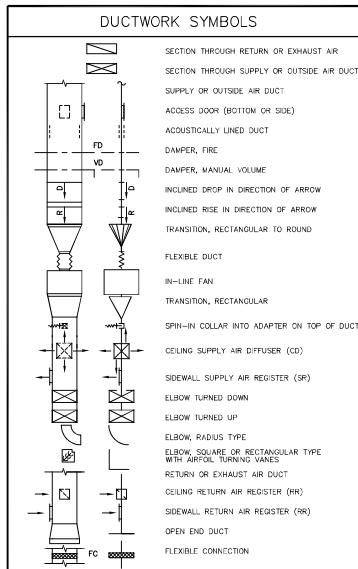


**MECHANICAL PLAN**  
SCALE: 1/4" = 1'-0"

FAN SCHEDULE								
MARK	SERVICE	LOCATION	CFM	STATIC PRESS. (IN. W.G.)	MOTOR			MANUFACTURE & MODEL
					HP	RPM	VOLTS-PHASE	
EF-1	TOILETS RM.-SHOWERS	OWSE	200	0.625	1/8	1800	115-1	GREENHECK SQ-90-W

ELECTRIC CABINET HEATER SCHEDULE						
EQUIPMENT NO.	VOLTS/PHASE	AMPS	KW	BILL NO.	MANUFACTURER & MODEL	OPTIONS-ACCESSORIES
EQ4-1	120/1	12.5	1.5	5/20	QMARK MODEL AVH6100F	- RECESSED VOLTAGING BOX - LINE VOLTAGE WALL MOUNT THERMOSTAT

NOTES:



**CPB**  
**CHARLES P. BUCKLEY**  
PROFESSIONAL ENGINEER  
500 PARK ST.  
RUMNEY, N.H. 03266  
TEL: (603) 786-9992  
FAX: (603) 786-9996  
N.H. LIC. NO. 00108

HVAC, Elec. & Plumb. Engineer:  
Charles P. Buckley, P.E.  
500 Depot Street  
Rumney, NH 03266  
tel: (603) 786-9992

Structural Engineer:  
Fisher Engineering, P.C.  
686 Balknap Mountain Road  
Gilford, NH 03249  
tel: (603) 528-7641

**NH STATE PARKS**  
Campground Expansion Project #11  
Mollidgewock State Park  
1437 Berlin Road  
Errol, NH  
03579

Issue  
**30% DESIGN**  
Graphic Scale

North

Scale: As Indicated  
Date: Aug. 25, 2023  
Drawn By: CPB

Checked By: CPB

Issues:

No.	Description	Date

Title  
**MECHANICAL PLAN AND DETAILS**

Sheet Number:  
**M1.01M**  
Project Number: 23045001  
File:

## ELECTRICAL NOTES

- SCOPE OF WORK.
  - CONTRACTOR SHALL VISIT SITE PRIOR TO BIDDING. BIDS SHALL SERVE AS EVIDENCE OF KNOWLEDGE OF EXISTING CONDITIONS. FIELD VERIFY ALL ELECTRICAL EQUIPMENT.
  - FURNISH ALL LABOR, MATERIALS, EQUIPMENT AND TOOLS TO PERFORM ELECTRICAL WORK SHOWN, NOTED OR SCHEDULED FOR A COMPLETE AND FINISHED INSTALLATION.
    - MATERIALS, PRODUCTS AND EQUIPMENT, INCLUDING ALL COMPONENTS THEREOF, SHALL BE NEW AND SUCH AS APPEAR ON THE UNDERWRITERS LABORATORIES LIST OF APPROVED ITEMS AND SHALL BE SIZED IN CONFORMITY WITH REQUIREMENTS OF THE NATIONAL ELECTRICAL CODE AND OTHER APPLICABLE CODES, WHICHEVER ARE MORE STRINGENT.
  - ALL WORK TO BE IN ACCORDANCE WITH 2020 NEC AND ALL APPLICABLE FEDERAL, STATE LOCAL CODES.
- PERMITS.
  - SECURE AND PAY FOR ALL REQUIRED PERMITS AND INSPECTION CERTIFICATES.
- SHOP DRAWINGS.
  - SUBMIT MATERIAL LIST AND SHOP DRAWINGS FOR MAJOR EQUIPMENT TO THE ARCHITECT FOR APPROVAL. SUBMITTALS SHALL BE IN ACCORDANCE WITH GENERAL CONDITIONS AND SHALL BEAR STAMP OF THE GENERAL CONTRACTOR SHOWING THAT HE HAS REVIEWED AND APPROVED THEM. LACK OF SUCH CONTRACTOR'S APPROVAL WILL BE CAUSE FOR REJECTION WITHOUT REVIEW BY THE ARCHITECT OR ENGINEER.
- CONDUITS.
  - THE TYPE OF CONDUIT SHALL BE AS FOLLOWS FOR ALL FEEDERS AND DISTRIBUTION CIRCUITS, UNLESS OTHERWISE SPECIFIED.
 

APPLICATION	TYPE OF CONDUIT
OUTDOORS	GALV. RIGID STEEL OR EMT W/ W.P. FITTINGS
BRANCH CIRCUITS (EXPOSED)	MC
BRANCH CIRCUITS (CONCEALED)	MC
SUPPLY TO DISTRIBUTION PANEL	EMT
UNDERGROUND SERVICE ENTRANCE	PVC - SCHEDULE 40
- WIRE.
  - WIRE SHALL BE SINGLE CONDUCTOR COPPER WITH 600 VOLT INSULATION. MINIMUM WIRE SIZE SHALL BE #12 EXCEPT #14 MAY BE USED FOR CONTROL. ALL WIRE AND CABLE SHALL BE NEW AND SHALL BE BROUGHT TO THE SITE IN UNBROKEN PACKAGES.
    - GENERAL WIRING SHALL BE THW OR THHN (ALUMINUM CONDUCTORS ARE NOT PERMITTED).
  - WIRE CONNECTORS SHALL BE EQUAL BY SCOTTO-LOCK FOR #6 AND SMALLER AND T & B "LOCK-LIT" FOR #6 AND LARGER.
- LIGHTING.
  - LIGHTING FIXTURES AND LAMPS (UNLESS NOTED OTHERWISE) SHALL BE FURNISHED BY THE ELECTRICAL CONTRACTOR. ELECTRICAL CONTRACTOR SHALL INSTALL ALL FIXTURES AND LAMPS.
- WIRE DEVICES.
  - RECEPTACLES SHALL BE 20 AMP, 3-WIRE GROUNDING TYPE EQUAL TO HUBBELL 5262 (MOUNTING Ø 18" A.F.F.).
  - SWITCHES SHALL BE STANDARD GRADE RATED 20 AMP AT 120 VOLT (MOUNTING Ø48" A.F.F.).
  - SPECIAL DEVICES SHALL BE A SPECIFICATION GRADE.
- SAFETY SWITCHES.
  - GROUND SAFETY AND DISCONNECT SWITCHES, FUSES OR NONFUSES, AS CALLED FOR ON DRAWINGS AND AS REQUIRED BY CODE. SWITCHES SHALL BE HEAVY DUTY, LOAD AND HORSEPOWER RATED AS MANUFACTURED BY SQUARE D, GOULD, ITE OR EQUAL.
- BOXES.
  - OUTLET BOXES AND COVERS SHALL BE GALVANIZED, ONE-PIECE PRESSED STEEL AND/OR CONDUIT.
  - JUNCTION, PULL BOXES AND COVERS SHALL BE GALVANIZED STEEL, CODE GAUGE SIZE.
- INSTALLATION.
  - ALL ELECTRICAL WORK SHALL BE INSTALLED SO AS TO BE READY ACCESSIBLE FOR OPERATING, SERVICING, MAINTAINING AND REPAIRING. HANGERS SHALL INCLUDE ALL MISCELLANEOUS STEEL SUCH AS CHANNELS, RODS, ETC., NECESSARY FOR THE INSTALLATION OF WORK AND SHALL BE FASTENED TO STEEL, CONCRETE OR WOOD, BUT NOT TO PIPING. ALL CONDUIT SHALL BE CONCEALED WHEREVER POSSIBLE. EXPOSED CONDUIT SHALL BE IN STRAIGHT LINES PARALLEL WITH OR AT RIGHT ANGLES TO COLUMN LINES OR BEAMS AND SEPARATED AT LEAST 3 INCHES FROM WATER LINES WHEREVER THEY RUN ALONG SIDE OR ACROSS SUCH LINES. CONDUCTORS SHALL BE IN CONDUIT, DUCTS OR APPROVED RACEWAYS.
  - THE CONTRACTOR SHALL DO ALL CUTTING, CHASING OR CHANNELING AND PATCHING REQUIRED FOR ANY WORK UNDER THIS DIVISION. SLEEVES SHALL EXTEND AT LEAST TWO (2) INCHES ABOVE FINISHED FLOOR AND ALL SLEEVES, OPENINGS, ETC., THROUGH FIRE RATED WALLS AND FLOORS SHALL BE SEALED AFTER CONDUIT INSTALLATION TO REMAIN THEIR FIRE RATING.
  - THE FOLLOWING EQUIPMENT SHALL BE IDENTIFIED WITH ENGRAVED BAKELITE NAMEPLATES AS TO NAME AND/OR FUNCTION: DISTRIBUTION PANELS AND DISCONNECT SWITCHES.
  - THE LOCATION OF OUTLETS AND EQUIPMENT SHOWN ON THE DRAWINGS ARE APPROXIMATE AND THE ARCHITECT SHALL HAVE THE RIGHT TO RELOCATE ANY OUTLETS OR FIXTURES BEFORE THEY ARE INSTALLED WITHOUT ADDITIONAL COST.
  - ELECTRICAL CONTRACTOR SHALL RECORD ALL FIELD CHANGES IN HIS WORK AS THE JOB PROGRESSES.
- WARRANTY.
  - MATERIALS, EQUIPMENT AND INSTALLATION SHALL BE GUARANTEED FOR A PERIOD OF ONE (1) YEAR FROM DATE OF ACCEPTANCE. DEFECTS WHICH APPEAR DURING THAT PERIOD SHALL BE CORRECTED AT THE CONTRACTOR'S EXPENSE.
  - FOR THE SAME PERIOD, THE ELECTRICAL CONTRACTOR SHALL BE RESPONSIBLE FOR ANY DAMAGE TO PREMISES CAUSED BY DEFECTS IN WORKMANSHIP OR IN THE WORK OR EQUIPMENT FURNISHED AND/OR INSTALLED BY HIM.
- FINALITY.
  - IT IS THE INTENT THAT THE FOREGOING WORK SHALL BE COMPLETE IN EVERY RESPECT AND THAT ANY MATERIAL OR WORK NOT SPECIFICALLY MENTIONED OR SHOWN ON THE DRAWINGS, BUT NECESSARY TO FULLY COMPLETE THE WORK SHALL BE FURNISHED.

## ELECTRICAL SYMBOLS

### ABBREVIATIONS

AC ABOVE COUNTER  
 AFF ABOVE FINISHED FLOOR.  
 CB CIRCUIT BREAKER.  
 EP EXPLOSION PROOF.  
 FI GROUND FAULT CIRCUIT INTERRUPTER.  
 GND GROUND.  
 HP HORSEPOWER.  
 LP LIGHTING PANEL.  
 MC MOTOR CONTROL CENTER.  
 MHC MOUNTING HEIGHT, MAN-HOLE.  
 NEC NATIONAL ELECTRICAL CODE.  
 NEMA NATIONAL ELECTRICAL MANUFACTURERS ASSOC.  
 NCT NOT IN CONTRACT.  
 NL NIGHT LIGHT.  
 PH PHOTOELECTRIC SWITCH  
 PP POWER PANEL.  
 RP RECEPTACLE PANEL.  
 UD UNDERGROUND.  
 UON UNLESS OTHERWISE NOTED.  
 WP WEATHER PROOF.

### WIRING

WIRING CONCEALED IN CEILING OR WALLS; SLASH MARKS INDICATE NUMBER OF CONDUCTORS EXCLUDING GROUNDS; CONDUCTOR SIZE AS MARKED; #12 AWG UON.  
 UNDERGROUND CABLE OR DUCT; TYPE, SIZE, CONDUCTORS, AND ARRANGEMENT BY NOTATION OR SCHEDULE.  
 WIRING RUN EXPOSED.

### SWITCHES

SWITCH OUTLET; MOUNTED 48" AFF UON; SINGLE POLE UON; LOWER CASE LETTER, WHEN PRESENT, INDICATES OUTLETS CONTROLLED.  
 \* ABBREVIATIONS FOR SWITCH OUTLETS  
 2 DOUBLE POLE SWITCH  
 4 4-WAY SWITCH  
 K KEY OPERATED SWITCH  
 D DOOR SWITCH  
 DIMMER SWITCH; MOUNTED 48" AFF UON; LOWER CASE LETTER, WHEN PRESENT, INDICATES OUTLETS CONTROLLED.

### LIGHTING

FLUORESCENT LIGHT FIXTURE - RECESSED, SURFACE, OR PENDENT MOUNTED.  
 RECESSED MOUNTED CEILING FIXTURE  
 SURFACE MOUNTED CEILING FIXTURE  
 INCANDESCENT FIXTURE, WALL  
 SURFACE OR PENDANT MOUNT EXIT SIGN FIXTURE; ARROWS INDICATE REQUIRED SIGN ARROWS.  
 BATTERY POWERED EMERGENCY LIGHTING FIXTURE  
 COMBINATION EMERGENCY LIGHTING FIXTURE AND EXIT SIGN  
 INDICATES FIXTURE TYPE; SEE SCHEDULE.

### RECEPTACLES

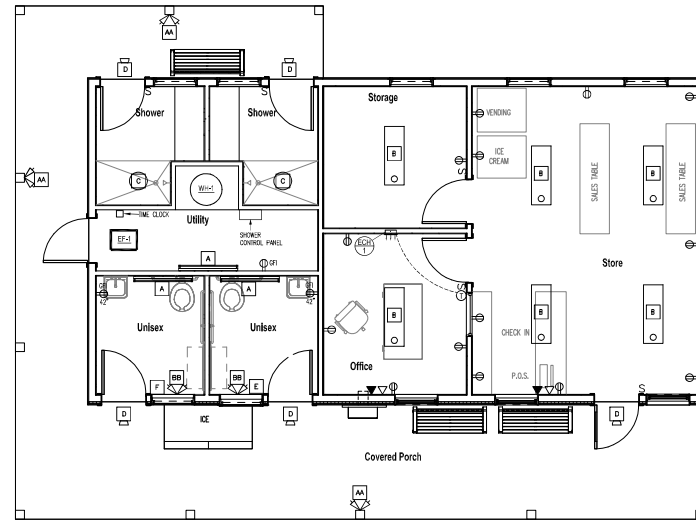
GROUNDING DUPLEX RECEPTACLE (NEMA 5-20R); MOUNTED 18" AFF UON; NUMBER INDICATES CIRCUIT.  
 GROUNDING QUADRIplex RECEPTACLE (NEMA 5-20R); MOUNTED 18" AFF UON.  
 SPECIAL PURPOSE RECEPTACLE; LETTER INDICATES TYPE; TYPE DEFINED BY NOTATION OR SCHEDULE; MOUNTED 18" AFF UON.

### PANELS AND MISC.

LIGHT OR POWER PANEL  
 FUSED SAFETY (DISCONNECT) SWITCH  
 NON-FUSED SAFETY (DISCONNECT) SWITCH  
 JUNCTION BOX  
 MOTOR  
 TELEPHONE OUTLET - WALL - MOUNTED 18" AFF, UON. PROVIDE 4X4 OUTLET BOX IN WALL WITH 3/4" CONDUIT TO ABOVE CEILING WITH FULL WIRE. WIRING BY OTHERS.  
 COMPUTER OUTLET - WALL - MOUNTED 18" AFF UON. PROVIDE 4X4 OUTLET BOX IN WALL WITH 3/4" CONDUIT TO ABOVE CEILING WITH FULL WIRE. WIRING BY OTHERS.

## ELECTRICAL NOTES

- VERIFY CONDITION AND CAPACITY OF EXISTING ELECTRICAL SERVICE (MINIMUM 100 AMP SERVICE). REMOVE AND REPLACE AS REQUIRED. PROVIDE NEW LIGHTING, POWER AND CONTROL CIRCUITING AS REQUIRED.
- ALL WORK TO BE PERFORMED IN ACCORDANCE WITH ALL CURRENT ELECTRICAL CODES.
- EXTERIOR LIGHTING TO BE CONTROLLED BY TIMECLOCK. INTERMATIC MODEL T101 OR APPROVED EQUAL.
- PROVIDE LOW VOLTAGE CEILING MOUNTED ULTRASONIC MOTION DETECTOR. GREENWAVE MODEL SAC-U-1000-R-SP20-WY OR APPROVED EQUAL.



## ELECTRICAL POWER PLAN

SCALE: 1/4" = 1'-0"

### LIGHTING FIXTURE SCHEDULE

MARK	MANUFACTURER	FIXTURE MAKE/MODEL	LAMPING	MOUNTING
A	METALUX	4-BOLED-LD4-28SL-F-UON-LR30-CD-1	32W LED	WALL MOUNTED Ø 8"-Ø" AFF
B	METALUX	4W6LED-LD4-40SL-UWV-LR40-CD1-U	39W LED	CEILING MOUNTED - SURFACE
C	HALD	SLD06-8-30-WH	12.5W LED	CEILING MOUNTED
D	RAB	BRISSTL-730	14W LED	ABOVE DOOR/BEHIND BEAM/POST
E	LEDWARD	THWLED	1/4W LED	MOUNT 24" AFF
M	DUAL-LITE	L2009020	2-0W/MR16	MOUNT TOP 6" T.O. WALL
BB	DUAL-LITE	L2226A (25 WATT BATTERY)	2-0W/MR16	MOUNT TOP 6" BELOW CEILING

**CPB**  
**CHARLES P. BUCKLEY**  
 PROFESSIONAL ENGINEER  
 600 PINE ST.  
 RUMNEY, N.H. 03066  
 TEL: (603) 786-9992  
 FAX: (603) 786-9993  
 N.H. LIC. NO. 00198

HVAC, Elec. & Plumb. Engineer:  
 Charles P. Buckley, P.E.,  
 500 Depot Street  
 Rumney, NH 03266  
 tel: (603) 786-9992

Structural Engineer:  
 Fisher Engineering, P.C.,  
 686 Belknap Mountain Road  
 Gilford, NH 03249  
 tel: (603) 528-7641

## NH STATE PARKS

Campround Expansion Project #11  
 Mollidgewock State Park  
 1437 Berlin Road  
 Errol, NH  
 03579

Issue

## 30% DESIGN

Graphic Scale

North

Scale: As Indicated

Date: Aug. 25, 2023

Drawn By: CPB

Checked By: CPB

Issues:

No.	Description	Date

Title

ELECTRICAL PLAN AND DETAILS

Sheet Number:

# E1.01M

Project Number: 23045001

File:

WATER HEATER SCHEDULE									
MARK	CAPACITY	RECOVERY @ 100 DEG. F.	BTU PER HR.	GAS CONSUM.	WATER CONSUM.	ELECTRIC AMPS	VOLTAGE	MANUFACTURE & MODEL	REMARKS
WH-1	60 GAL.	138 GAL./HR.	120,000	3/4"	1-1/4"	15.0	120-1	A.O. SMITH MODEL 87H 120	-PROPANE FRED -POWER WIRE -4" VENT & COND. AIR PIPES -1/4" DR. FLOORING TRIM -WING VALVE

### PLUMBING NOTES

- SCOPE OF WORK**
- A. THE CONTRACTOR IS RESPONSIBLE FOR ALL WORK, MATERIALS, AND LABOR TO SATISFY A COMPLETE WORKING SYSTEM WHETHER SPECIFIED OR IMPLIED.

B. ALL WORK IS TO BE PERFORMED IN STRICT COMPLIANCE WITH THE INTERNATIONAL PLUMBING CODE (IPC).

C. THE CONTRACTOR SHALL, BEFORE SUBMITTING ANY PROPOSAL, EXAMINE THE PROPOSED SITE AND SHALL DETERMINE FOR HIMSELF THE CONDITIONS THAT MAY AFFECT THE WORK. NO ALLOWANCE SHALL BE MADE IF THE CONTRACTOR FAILS TO MAKE SUCH EXAMINATIONS.

D. ALL EQUIPMENT AND MATERIALS SHALL BE AS SPECIFIED OR "APPROVED EQUAL" BY ENGINEER OR ARCHITECT.

**SHOP DRAWINGS**

A. SUBMIT MATERIAL LIST AND SHOP DRAWINGS FOR MAJOR EQUIPMENT/FIXTURES TO THE ARCHITECT OR ENGINEER FOR APPROVAL. THE SHOP DRAWINGS SHALL BE CLEARLY TAGGED AND HIGHLIGHTED.
  - DOMESTIC WATER SUPPLY PIPING**

A. ABOVE GROUND MAINS AND BRANCHES - COPPER PIPE WITH SOLDER JOINTS. BRANCHES - PEX WITH PEX FITTINGS.

B. ALL HOT WATER PIPING TO BE INSULATED WITH 1" FIBERGLASS INSULATION.

C. ALL COLD WATER PIPING TO BE INSULATED WITH 1/2" FOAM INSULATION.

D. PROVIDE DOMESTIC WATER SHUT-OFFS AT EACH PLUMBING FIXTURE.
  - SANITARY/STORM DRAINAGE AND VENT PIPING**

A. ABOVE GRADE: -2" AND BELOW SCH. 40 PVC WITH SOLVENT JOINTS. -3" AND ABOVE SCH. 40 PVC WITH SOLVENT JOINTS.

B. BELOW GRADE/SCH. 40 PVC WITH SOLVENT JOINTS.

C. PVC PIPING SHALL NOT BE USED IN AIR PLENUM CEILINGS AND SHALL NOT CROSS FIRE RATED WALLS, CEILINGS, OR FLOORS.

D. DRAINAGE PIPING SHALL BE RUN AS STRAIGHT AS POSSIBLE AND SHALL HAVE LONG TURN FITTINGS.

E. DRAINAGE PIPING 2" SIZE AND SMALLER SHALL RUN AT A UNIFORM GRADE OF AT LEAST 1/4" PER FOOT, AND PIPING LARGER THAN 2" SHALL BE RUN AT A GRADE OF NO LESS THAN 1/8" PER FOOT.

F. CONTRACTOR SHALL BE RESPONSIBLE FOR THE PROPER FLASHING OF THE VENT PIPING RUN THROUGH THE ROOF.

G. ALL STUB-INS AND/OR SLAB OR WALL PENETRATION TO BE PER INTERNATIONAL PLUMBING CODE. ALL PIPING PENETRATIONS OF BUILDING FOUNDATIONS, FOOTINGS AND WALLS SHALL BE SLEEVED.
  - PIPE SUPPORTS**

A. ABOVE GRADE: ALL PIPE SHALL BE SUPPORTED FROM THE BUILDING STRUCTURE IN A NEAT AND WORKMANLIKE MANNER. THE USE OF WIRE AND PERFORMED METAL TO SUPPORT PIPES WILL NOT BE PERMITTED. SPACING OF PIPE SUPPORTS SHALL BE AS SPECIFIED IN THE INTERNATIONAL PLUMBING CODE.
  - MISCELLANEOUS**

A. COORDINATE INSTALLATION OF ALL ROOF FLASHING AT ROOF PENETRATION.

B. DO NOT SCALE THIS DRAWING FOR EXACT DIMENSIONS. VERIFY ALL FIGURES, CONDITIONS, AND DIMENSIONS AT THE JOB SITE.

C. THE PLUMBING PLANS ARE INTENDED TO BE DIAGRAMMATIC AND ARE BASED ON ONE MANUFACTURER'S EQUIPMENT. THEY ARE NOT INTENDED TO SHOW EVERY ITEM IN ITS EXACT LOCATION, THE EXACT DIMENSIONS, OR ALL THE DETAILS OF THE EQUIPMENT. THE CONTRACTOR SHALL VERIFY THE ACTUAL DIMENSIONS OF THE EQUIPMENT PROPOSED TO ENSURE THAT THE EQUIPMENT WILL FIT IN THE AVAILABLE SPACE.

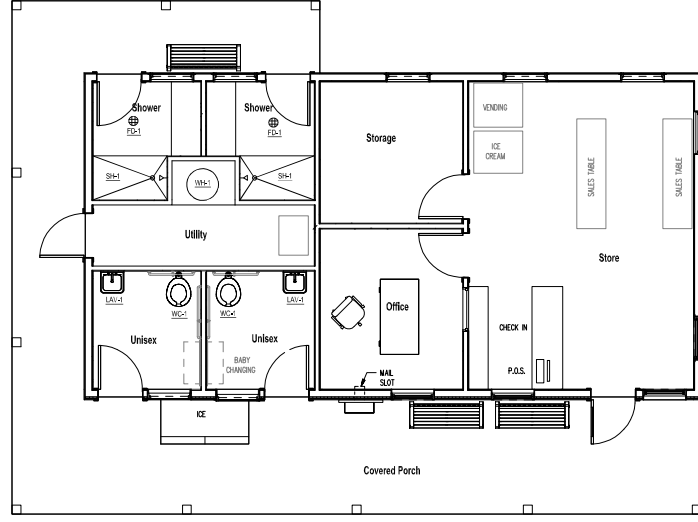
D. SEAL AND FLASH ALL WALL PENETRATIONS AIR AND WEATHER-TIGHT.

**TESTING AND DISINFECTION**

A. PLUMBING SYSTEMS SHALL BE FLOW AND PRESSURE TESTED & DISINFECTED IN ACCORDANCE WITH STANDARD PRACTICE AND THE INTERNATIONAL PLUMBING CODE.

### PLUMBING SYMBOLS

SYMBOL	DESCRIPTION	SYMBOL	DESCRIPTION
---	SOIL OR WASTE PIPE (BELOW GROUND)	↑	VACUUM BREAKER
---	SOIL OR WASTE PIPE (ABOVE GROUND)	○	PRESSURE GAGE
----	VENT PIPE (V)	○	TEMPERATURE GAGE
----	COLD WATER PIPE (CW)	⊕	PRESSURE REDUCING VALVE
----	HOT WATER PIPE (HW)	⊕	GAS COOK
----	HOT WATER RETURN (HWR)	⊕	VENT THROUGH ROOF
— G —	GAS PIPE	VTR	VENT THROUGH ROOF
— S D —	STORM DRAIN	LAV	LAVATORY
— F D —	FLOOR DRAIN	WC	WATER CLOSET
— C O —	CLEAN-OUT (FLOOR)	URN	URNAL
— C O —	CLEAN-OUT (WALL OR ABOVE GLG.)	◀	COLD WATER CONNECTION
⊕	HOT WATER HEATER	◀ (120°F)	HOT WATER CONNECTION
⊕	GATE VALVE	◀ (140°F)	HOT WATER CONNECTION
⊕	CHECK VALVE	◀	HOT WATER RETURN CONNECTION
⊕	TEMP. PRESS. RELIEF VALVE	■	GAS CONNECTION
⊕	FIXTURE ISOLATION VALVE	□	IN DRAIN SPACE
⊕	BALL VALVE	⊕	ELECTRIC GAS VALVE FOR PIPING UNDER FLOORS - TIE INTO ANSUL SYSTEM



**PLUMBING PLAN**  
SCALE: 1/4" = 1'-0"

PLUMBING FIXTURE SCHEDULE			
MARK	DESCRIPTION	MANUFACTURE - MODEL #	ACCESSORIES & NOTES
WC-1	ACCESSIBLE TOILET	AMERICAN STANDARD: AFWALL WELLDRAIN FLOWSE 1.28 GPF FLUSHMATE MODEL: 356A.128	FLUSH VALVE: AMERICAN STANDARD MODEL: 6047.027.002 TOILET SEAT: AMERICAN STANDARD MODEL: 8965.1190 CARRIER
LAV-1	COUNTER SINK	CORIAN: AIA-COMPLANT MODEL: 810	FAUCET: STAMBOG: STAMBOG 9-25-2-GS, TRAP: CHROME PLATED, MIXING VALVE: STAMBOG: WMLINE 7-210-OK-W, PIPE COVERS: #8 SELECTED BY ARCHITECT
SH-1	ACCESSIBLE SHOWER	CUSTOM	DRAIN WIRE: IS-1102-A-2-48-40-3, SEED: STAMBOG: SYSTEM 4-110 (2) HEADS @ ROOF CONTROL: STAMBOG: SYSTEM 4-95-84-W, OVERFLOW VALVE: STAMBOG: MODEL: COV-10-10, FLUID MANUFACTURING CORP OPERATED CONTROL VALVE SYSTEM. #8 SELECTED BY ARCHITECT
FD-1	FLOOR DRAIN	ZURN: MODEL: F50-TSP-4P	TRAP PRIMER: PRECISION PLUMBING PRODUCTS: PR-500

NOTES: ① SCHEDULE INDICATES FIXTURES SELECTED AS THE BASIS OF DESIGN. ALTERNATIVES WILL BE ACCEPTED IF EQUAL OR BETTER QUALITY. ② WATER PIPING SHALL BE INSTALLED TO ALLOW FOR SEASONAL DRAIN DOWN OF THE WATER SYSTEM. PROVIDE DRAIN VALVES AS REQUIRED AT LOW POINTS. DRAIN VALVES SHALL BE LOCATED TO LIMIT PUBLIC ACCESS. ③ PROVIDE ALL NECESSARY TRIM AND FITTINGS REQUIRED FOR A COMPLETE INSTALLATION.

**CPB**  
**CHARLES P. BUCKLEY**  
 PROFESSIONAL ENGINEER  
 500 DEPOT ST.  
 RUMNEY, NH 03266  
 TEL: (603) 786-9926  
 FAX: (603) 786-2865  
 N.H. LIC. NO. 09190

HVAC, Elec. & Plumb. Engineer:  
**Charles P. Buckley, P.E.**  
 500 Depot Street  
 Rumney, NH 03266  
 tel: (603) 786-9922

Structural Engineer:  
**Fisher Engineering, P.C.**  
 686 Belknap Mountain Road  
 Clifford, NH 03249  
 tel: (603) 528-7421

**NH STATE PARKS**  
 Campground Expansion Project #11  
 Mollidgewock State Park  
 1437 Berlin Road  
 Errol, NH  
 03579

Issue  
**30% DESIGN**  
 Graphic Scale

North

Scale: As Indicated

Date: Aug. 25, 2023

Drawn By: CPB

Checked By: CPB

Issue:	No.	Description	Date

PLUMBING PLAN AND DETAILS

Sheet Number:

**P1.01M**

Project Number: 23045001

File: